

BEFORE THE STATE CORPORATION COMMISSION  
OF THE STATE OF KANSAS

In the Matter of a Joint Application of )  
Bluestem Telephone Company, Inc., for )  
Permission to Cease Operating as a )  
Telephone Public Utility and )  
Sunflower Telephone Company, Inc. for a )  
Certificate of Convenience and Authority )  
For Sunflower Telephone Company, Inc. )  
To Operate as a Telephone Public Utility )  
in the Area Served by )  
Bluestem Telephone Company, Inc. )

Docket No. \_\_\_\_\_

In the Matter of a Joint Application of )  
Bluestem Telephone Company, Inc. for )  
Permission to Cease Operating as a )  
Telephone Public Utility and )  
Sunflower Telephone Company, Inc. for a )  
Certificate of Convenience and Authority )  
To Operate as a Telephone Public Utility )  
in the Area Served by )  
Bluestem Telephone Company, Inc. )

Docket No. \_\_\_\_\_

**JOINT APPLICATION OF BLUESTEM TELEPHONE COMPANY, INC. AND**  
**SUNFLOWER TELEPHONE COMPANY, INC. TO ALLOW SUNFLOWER TO**  
**AMEND ITS CERTIFICATE OF CONVENIENCE AND AUTHORITY**  
**TO INCLUDE THE AREA SERVED BY**  
**BLUESTEM TELEPHONE COMPANY, INC. AND FOR**  
**BLUESTEM TELEPHONE COMPANY, INC.**  
**TO CEASE OPERATING AS A TELEPHONE PUBLIC UTILITY**

COMES NOW Sunflower Telephone Company, Inc. (Sunflower) and Bluestem  
Telephone Company, Inc. (Bluestem), by and through their attorney, Rachel Lipman Reiber, and  
hereby submits this Joint Application to permit Sunflower to amend its Certificate of  
Convenience and Authority to include the area served by Bluestem, and to permit Bluestem to

b. Surrender of Bluestem's current Certificate of Convenience of Authority.

7. Sunflower and Bluestem request expedited treatment of this application, to enable these changes to become effective with other corporate reorganization changes scheduled to take place on January 1, 2019.

8. Please direct all communications concerning this docket to the undersigned counsel, as well as:

Kevin J. Kastor  
Director - Government Affairs  
350 South Loop 336 West  
Conroe, TX 77304  
936.788.7420 direct telephone  
[kevin.kastor@consolidated.com](mailto:kevin.kastor@consolidated.com)

WHEREFORE, for all of the foregoing reasons, Sunflower and Bluestem request that the Commission permit Sunflower to amend its Certificate of Convenience and Authority to include the legal description currently served by Bluestem and that the Commission cancel Bluestem's Certificate of Convenience and Authority.

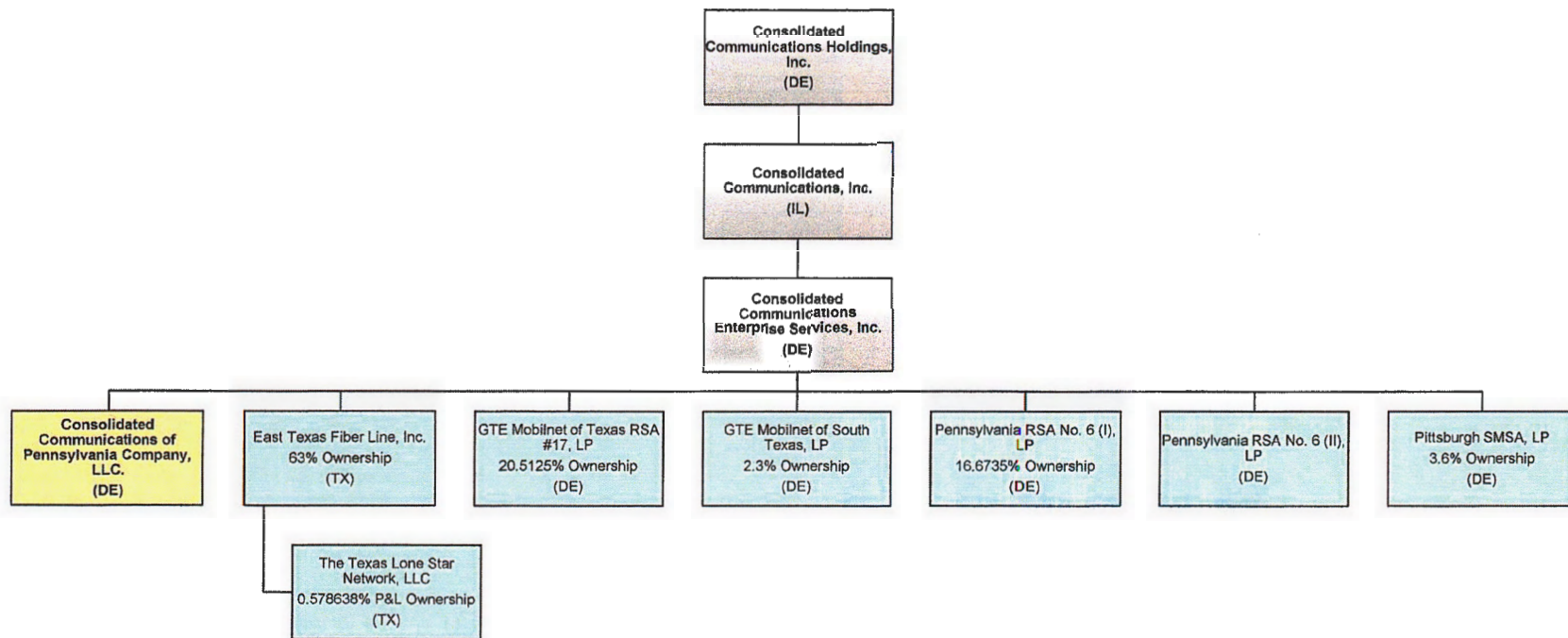
Respectfully Submitted,

/s/Rachel Lipman Reiber  
Rachel Lipman Reiber #12164  
REIBER LAW OFFICE, LLC.  
214 S. Chestnut, Suite 3  
Olathe, KS 66061  
(913) 782-5544 telephone  
(913) 782-4445 facsimile  
[rlreiberlaw@gmail.com](mailto:rlreiberlaw@gmail.com)

# **EXHIBIT A**

# Consolidated Communications Holdings, Inc. & Subsidiaries

## Corporate Legal Entity Chart @ 12/31/17

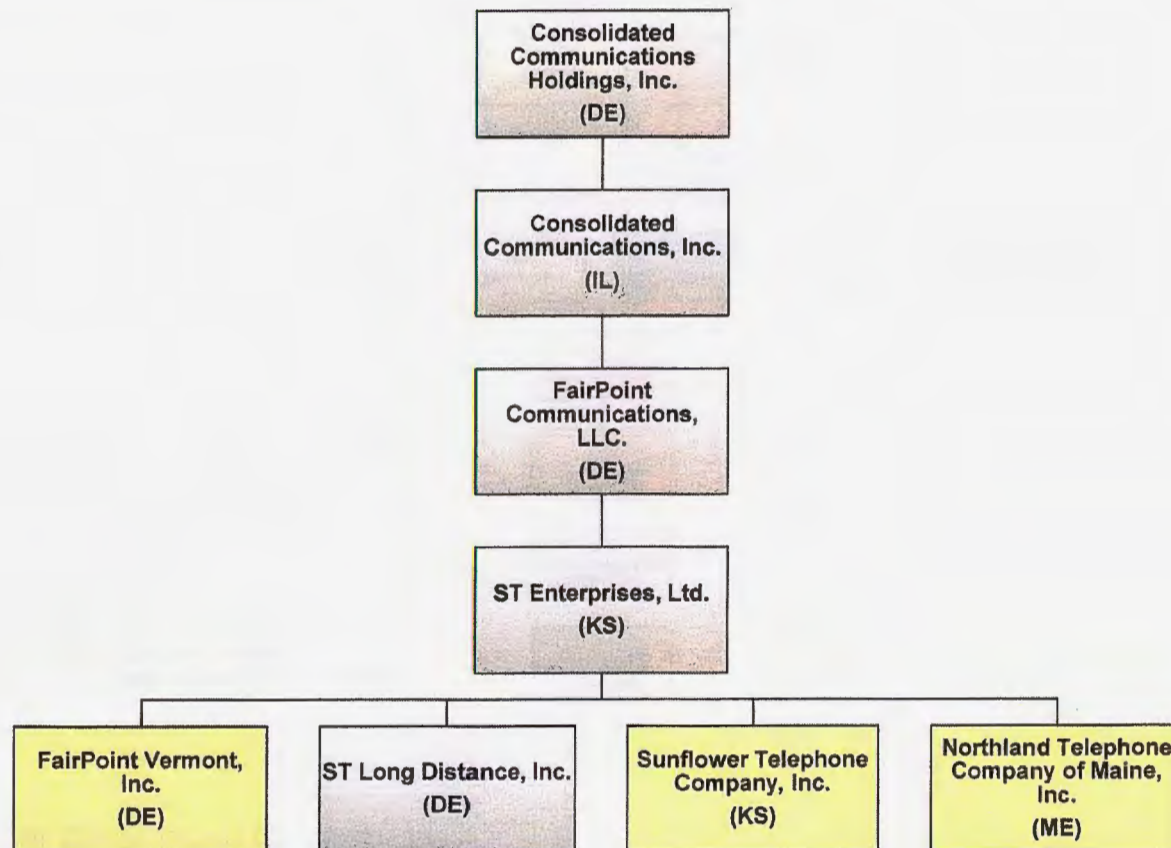


### Changes:

1. CCES becomes an LLC.
2. CCPA, LLC. moves under CCI, Inc.

# Consolidated Communications Holdings, Inc. & Subsidiaries

Corporate Legal Entity Chart @ 12/31/17



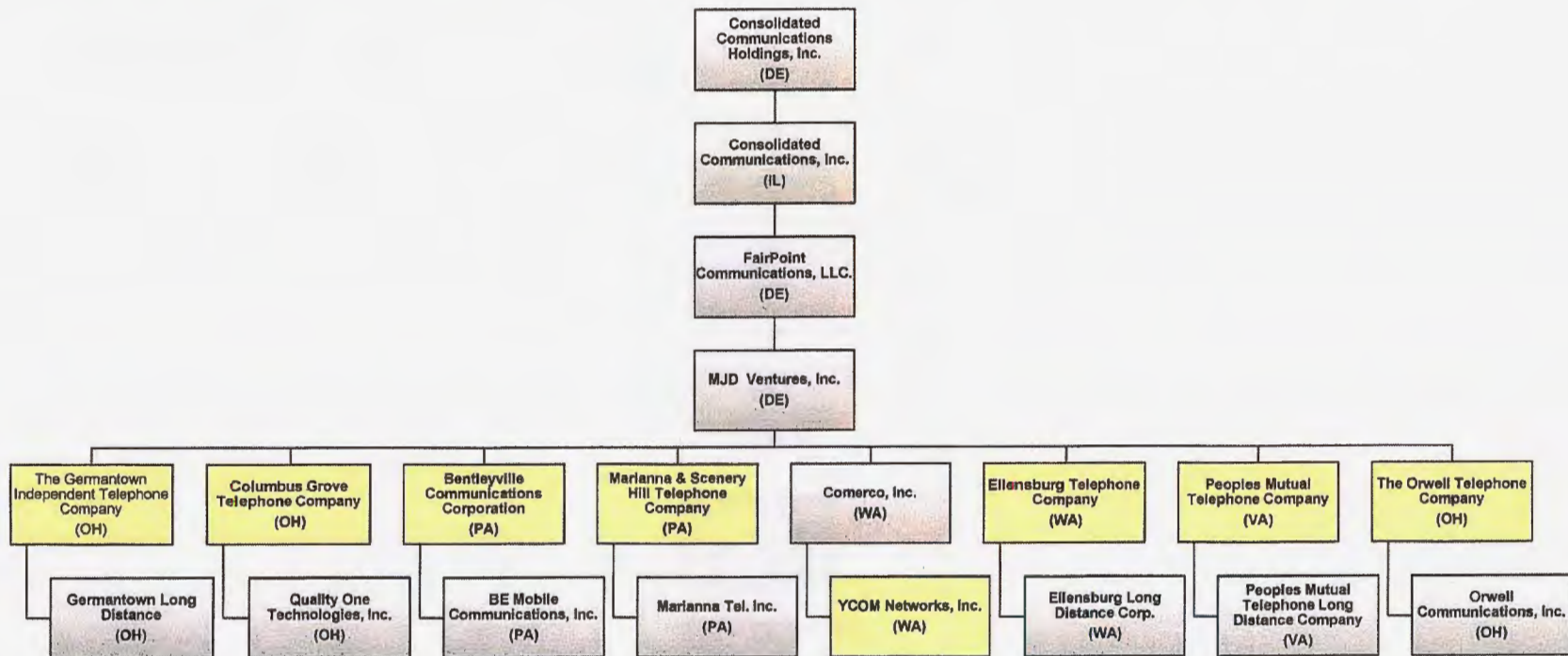
**Changes:**

1. FairPoint Vermont, Inc. becomes a subsidiary of CCI, Inc.
2. Sunflower Telephone Company, Inc. becomes a subsidiary of CCI, Inc.
3. Northland Telephone merges into Maine Telephone Company
4. ST Long Distance, Inc. merges into CCES
5. FairPoint Vermont name is changed to Consolidated Communications of Northland Company
6. Sunflower Tel name is changed to Consolidated Communications of Kansas Company
7. ST Enterprises Ltd. is dissolved



# Consolidated Communications Holdings, Inc. & Subsidiaries

## Corporate Legal Entity Chart @ 12/31/17

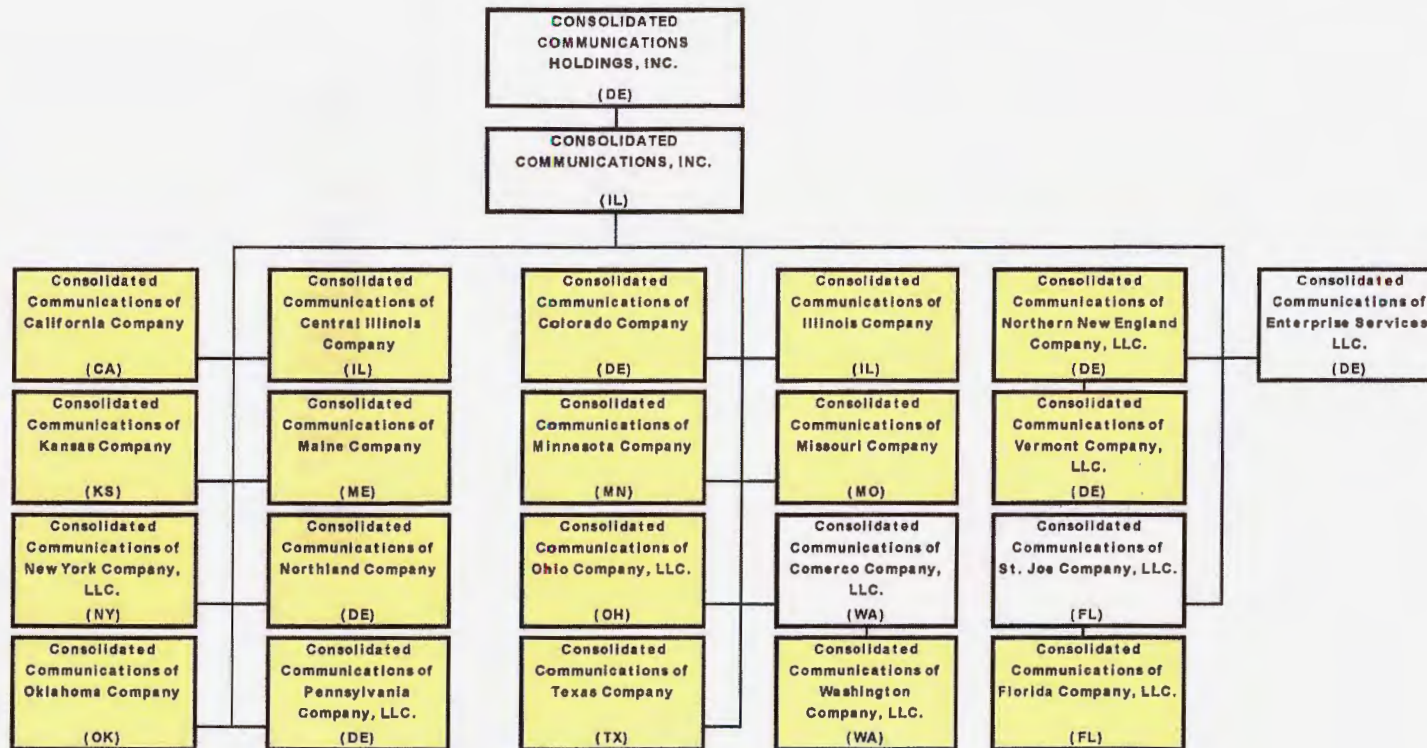


### Changes:

1. Columbus Grove Telephone merges into Orwell Telephone
2. Germantown Telephone merges into Orwell Telephone
3. Bentleyville Comm merges into CCPA, LLC.
4. Marianna & Scenery Hill Tel. merges into CCPA, LLC.
5. YCOM Networks merges into Ellensburg Telephone
6. Orwell Telephone becomes a subsidiary of CCI, Inc.
5. Comerco, Inc. becomes an LLC and subsidiary of CCI, Inc.
6. Ellensburg Telephone becomes an LLC and subsidiary of Comerco, LLC.
7. Orwell Telephone, LLC. is named Consolidated Communications of Ohio Company, LLC
8. Ellensburg Telephone is named Consolidated Communication of Washington Company, LLC.
9. Peoples Mutual is sold to Riverstreet
10. Germantown LD, Quality One, BE Mobile, Marianna Tel, Ellensburg LD and Orwell Comm merge into CCES
11. MJD Ventures is dissolved

# Consolidated Communications Holdings, Inc. & Subsidiaries

## Corporate Legal Entity Chart – Post Consolidation





SCHEDULE 2.2 - LEGAL DESCRIPTION OF AMERICUS, CEDAR POINT, AND SAFFORDVILLE EXCHANGES

AMERICUS, KANSAS EXCHANGE AREA

Beginning at a point 1/2 mile north and 1/2 mile west of the southeast corner of Section 17, T14S, R10E, Wabaunsee County, Kansas; thence east 7 miles; thence south 6 3/4 miles to a point 1/4 mile south and 1/2 mile east of the northwest corner of Section 21, T15S, R11E, Lyon County; thence west 3 1/4 miles; thence south 3 1/4 miles; thence east 1 1/2 miles; thence south 2 1/4 miles; thence east 1/2 mile; thence south 3/4 mile; thence west 1/2 mile; thence south 3/4 mile; thence east 3/4 mile; thence south 1 mile; thence east 3/8 mile; thence south 1 3/8 miles; thence east 3/8 mile; thence south 1 5/8 miles; thence east 1 mile; thence south 2 1/2 miles; thence east 1/4 mile; thence south 1 3/4 miles; thence west 7/16 mile; thence south 9/16 mile; thence west 3/16 mile; thence south 1 7/16 miles; thence west 5/8 mile; thence south 7/8 mile; thence west 1/2 mile; thence south 1/4 mile to a point 1/4 mile west and 3/8 mile north of the southeast corner of Section 20, T18S, R11E; thence west 1 1/2 miles; thence south 1/8 mile; thence west approximately 3/8 mile to the Neosho River; thence westerly along said river to a point 1/4 mile east of the west side of Section 24, T18S, R10E; thence south approximately 1/2 mile to a point 1/4 mile north and 1/4 mile east of the southwest corner of Section 24, T18S, R10E; thence west 1 mile; thence north 1/2 mile; thence west 4 miles; thence north 3/4 mile; thence west 1 3/4 miles; thence north 1/2 mile; thence west 1/2 mile; thence north 2 miles to the northwest corner of Section 2, T18S, R9E; thence east 3 miles; thence north 2 miles; thence east 1 1/2 miles; thence north 1 mile; thence west 1/2 mile; thence north 1 mile; thence west 1/8 mile; thence north 1/2 mile; thence east 1/8 mile; thence north 1/2 mile; thence west 1/4 mile; thence north 1 mile; thence west 1/2 mile; thence north 1 mile; thence west 1 1/4 miles; thence north 5 miles; thence east 1/2 mile; thence north 6 1/2 miles; thence east 1 mile; thence north 3 miles to a point of beginning.

CEDAR POINT, KANSAS EXCHANGE AREA

Beginning at a point 1/2 mile north and 1/4 mile east of the southwest corner of Section 6, T20S, R7E, Chase County, Kansas; thence south 2 3/4 miles; thence east 2 1/4 miles; thence south approximately 4 miles to a point 1/4 mile south of the north line of Section 9, T21S, R7E; thence east approximately 3/4 mile to a point 1/2 mile east and 1/4 mile south of the northwest corner of Section 10, T21S, R7E; thence south 1 1/4 miles; thence east 1 mile; thence south 6 miles; thence west 9 miles to a point 1/2 mile west and 1/2 mile south of the northeast corner of Section 17, T22S, R6E; thence north 1 1/4 miles; thence west 1 mile; thence north 3/4 mile to a point 1/2 mile north and 1/2 mile east of the southwest corner of Section 6, T22S, R6E, Chase County; thence west 2 miles to a point 1/2 mile west and 1/2 mile south of the northeast corner of Section 2, T22S, R5E, Marion County; thence north 4 miles; thence west 1 mile; thence north approximately 2 1/2 miles to a point 1/2 mile west of the northeast corner