

**Appendix B**  
**Supporting Schedules**

**MIDWEST ENERGY, INC. - GAS DEPARTMENT****TEST YEAR ENDED DECEMBER 31, 2005****REVENUE REQUIREMENT SUMMARY**

	Company Claim	Recommended Adjustment	Recommended Position	
	(A)			
1. Pro Forma Rate Base	\$41,279,697	(\$1,869,845)	\$39,409,852	(B)
2. Required Cost of Capital	8.49%	-1.35%	7.14%	(C)
3. Required Return	\$3,504,151	(\$689,005)	\$2,815,146	
4. Operating Income @ Present Rates	84,009	687,046	771,055	(D)
5. Operating Income Deficiency	\$3,420,142	(\$1,376,051)	\$2,044,091	
6. Revenue Multiplier	1.0000		1.0046	(E)
7. Revenue Deficiency	<b><u>\$3,420,142</u></b>	<b><u>(\$1,366,654)</u></b>	<b><u>\$2,053,488</u></b>	

## Sources:

(A) Company Filing, Section 3, Schedule 1, page 1.

(B) Schedule ACC-3.

(C) Schedule ACC-2.

(D) Schedule ACC-10.

(E) Schedule ACC-24.

**MIDWEST ENERGY, INC. - GAS DEPARTMENT****TEST YEAR ENDED DECEMBER 31, 2005****REQUIRED COST OF CAPITAL**

	Amount	Capital Structure	Cost Rate		Weighted Cost
	(A)				
1. Equity Capital	\$91,976,804	40.36%	10.00%	(B)	4.04%
2. Long Term Debt	135,912,816	59.64%	5.21%	(A)	3.11%
3. Total Cost of Capital	\$227,889,620				<u>7.14%</u>

## Sources:

(A) Response to KCC-169.

(B) Recommendation of Ms. Crane.

## MIDWEST ENERGY, INC. - GAS DEPARTMENT

TEST YEAR ENDED DECEMBER 31, 2005

## GAS COMPANY DIVIDEND YIELDS

COMPANY	Source: Yahoo Finance - June 26, 2006			Source: Yahoo Finance - June 26, 2005			
	Dividend	Closing Price June 23, 2006	Dividend Yield	6-Month High 12/22/05 - 6/23/06	6-Month Low 12/22/05 - 6/23/06	Average	Average Yield
AGL Resources, Inc. (NYSE-ATG)	1.48	36.93	4.01%	37.20	34.40	35.80	4.13%
Atmos Energy Corporation (NYSE-ATO)	1.26	27.06	4.66%	27.73	25.55	26.64	4.73%
Cascade Natural Gas Corporation (NYSE-CGC)	0.96	20.31	4.73%	21.15	18.95	20.05	4.79%
Chesapeake Utilities Corporation (NYSE-CPK)	1.16	29.19	3.97%	32.47	27.90	30.19	3.84%
Delta Natural Gas Company (NDQ-DGAS)	1.20	24.51	4.90%	26.82	24.22	25.52	4.70%
El Paso Corporation (NYSE-EP)	0.16	15.20	1.05%	16.00	11.80	13.90	1.15%
Energen Corporation (NYSE-EGN)	0.44	35.53	1.24%	39.49	32.16	35.83	1.23%
Energy West Incorporated (NYSE-EWST)	0.20	9.05	2.21%	11.00	8.57	9.79	2.04%
EnergySouth, Inc. (NDQ-ENSI)	0.92	31.70	2.90%	34.92	26.40	30.66	3.00%
Equitable Resources, Inc. (NYSE-EQT)	0.88	33.22	2.65%	39.02	31.59	35.31	2.49%
KeySpan Corp. (NYSE-KSE)	1.86	40.25	4.62%	41.52	35.19	38.36	4.85%
Kinder Morgan, Inc. (NYSE-KMI)	3.50	99.54	3.52%	103.75	81.00	92.38	3.79%
Laclede Gas Company (NYSE-LG)	1.42	32.59	4.36%	35.55	29.09	32.32	4.39%
National Fuel Gas Company (NYSE-NFG)	1.20	34.42	3.49%	36.75	30.58	33.67	3.56%
New Jersey Resources Corp. (NYSE-NJR)	1.44	44.94	3.20%	46.43	41.49	43.96	3.28%
NICOR Inc. (NYSE-GAS)	1.86	40.57	4.58%	43.12	38.72	40.92	4.55%
Northwest National Gas Co. (NYSE-NWN)	1.38	35.08	3.93%	36.57	32.83	34.70	3.98%
ONEOK, Inc. (NYSE-OKE)	1.20	33.26	3.61%	35.15	26.30	30.73	3.91%
Peoples Energy Corporation (NYSE-PGL)	2.18	35.40	6.16%	38.66	34.88	36.77	5.93%
Piedmont Natural Gas Co., Inc. (NYSE-PNY)	0.96	23.95	4.01%	25.40	23.21	24.31	3.95%
Questar Corporation (NYSE-STR)	0.94	74.42	1.26%	85.70	67.37	76.54	1.23%
RGC Resources, Inc. (NDQ-RGCO)	1.20	25.11	4.78%	26.90	22.72	24.81	4.84%
SEMCO Energy, Inc. (NYSE-SEN)	-	5.41	-	6.00	5.04	5.52	-
South Jersey Industries, Inc. (NYSE-SJI)	0.90	26.46	3.40%	30.15	25.63	27.89	3.23%
Southern Union Company (NYSE-SUG)	0.20	25.63	0.78%	26.22	22.76	24.49	0.82%
Southwest Gas Corporation (NYSE-SWX)	0.82	29.06	2.82%	29.94	26.04	27.99	2.93%
Southwestern Energy Company (NYSE-SWN)	-	30.09	-	44.28	23.66	33.97	-
UGI Corporation (NYSE-UGI)	0.71	24.39	2.91%	24.65	20.21	22.43	3.17%
WGL Holdings, Inc. (NYSE-WGL)	1.35	28.11	4.80%	31.49	27.04	29.27	4.61%
Williams Companies, Inc. (NYSE-WMB)	0.36	22.25	1.62%	25.58	19.35	22.47	1.60%
AVERAGE			3.43%				3.45%

## MIDWEST ENERGY, INC. - GAS DEPARTMENT

TEST YEAR ENDED DECEMBER 31, 2005

GOWTH IN EARNINGS, DIVIDENDS, BOOK VALUE  
ALL NATURAL GAS COMPANIES FOLLOWED BY AUS UTILITY REPORTS

COMPANY	Past 5 Years Earnings	Past 5 Years Dividends	Past 5 Years Book Value	Past 10 Years Earnings	Past 10 Years Dividends	Past 10 Years Book Value	Projected 5 Years Earnings	Projected 5 Years Dividends	Projected 5 Years Book Value
AGL Resources, Inc. (NYSE-ATG)	13.5%	2.0%	8.5%	6.5%	1.5%	5.5%	4.0%	6.5%	6.0%
Atmos Energy Corporation (NYSE-ATO)	6.5%	2.0%	8.5%	4.0%	3.0%	6.5%	7.0%	2.0%	5.0%
Cascade Natural Gas Corporation (NYSE-CGC)	(3.5%)	-	-	1.5%	-	0.5%	9.0%	0.5%	10.0%
Chesapeake Utilities Corporation (NYSE-CPK)	6.0%	1.5%	3.5%	na	na	na	4.5%	na	na
Delta Natural Gas Company (NDQ-DGAS)	5.0%	0.5%	4.0%	na	na	na	3.0%	na	na
El Paso Corporation (NYSE-EP)	(35.5%)	(12.5%)	(10.5%)	(16.0%)	(3.0%)	(0.5%)	30.5%	(12.0%)	3.5%
Energen Corporation (NYSE-EGN)	21.0%	3.0%	12.5%	15.0%	3.5%	11.5%	10.0%	8.0%	8.0%
Energy West Incorporated (NYSE-EWST)	-	-	0.5%	na	na	na	na	na	na
EnergySouth, Inc. (NDQ-ENSI)	6.5%	5.0%	6.5%	na	na	na	5.0%	na	na
Equitable Resources, Inc. (NYSE-EQT)	24.5%	18.0%	3.5%	13.0%	9.0%	1.0%	8.5%	7.0%	7.5%
KeySpan Corp. (NYSE-KSE)	25.5%	1.5%	2.5%	3.0%	3.0%	4.0%	1.5%	2.5%	4.0%
Kinder Morgan, Inc. (NYSE-KMI)	27.5%	31.0%	9.0%	14.0%	12.5%	10.0%	12.5%	13.0%	8.5%
Laclede Gas Company (NYSE-LG)	4.5%	0.5%	2.5%	2.5%	1.0%	3.0%	6.0%	2.0%	5.5%
National Fuel Gas Company (NYSE-NFG)	4.0%	3.5%	3.0%	5.5%	3.5%	3.5%	1.5%	2.5%	4.0%
New Jersey Resources Corp. (NYSE-NJR)	8.5%	3.0%	7.0%	7.5%	2.5%	5.0%	4.5%	4.5%	6.0%
NICOR Inc. (NYSE-GAS)	(3.5%)	3.5%	1.5%	1.0%	4.0%	3.0%	4.0%	1.5%	3.0%
Northwest National Gas Co. (NYSE-NWN)	5.0%	1.0%	3.5%	1.5%	1.0%	4.0%	7.0%	4.0%	3.5%
ONEOK, Inc. (NYSE-OKE)	14.0%	7.5%	9.0%	12.5%	5.0%	8.5%	5.0%	8.0%	8.5%
Peoples Energy Corporation (NYSE-PGL)	-	2.0%	0.5%	2.0%	2.0%	2.0%	1.5%	0.5%	na
Piedmont Natural Gas Co., Inc. (NYSE-PNY)	5.0%	5.0%	6.5%	5.5%	5.5%	6.5%	6.0%	5.5%	4.5%
Questar Corporation (NYSE-STR)	12.5%	4.0%	7.5%	8.0%	3.5%	7.5%	9.5%	2.5%	13.5%
RGC Resources, Inc. (NDQ-RGCO)	(1.5%)	1.5%	3.0%	na	na	na	na	na	na
SEMCO Energy, Inc. (NYSE-SEN)	(26.5%)	(29.0%)	(5.0%)	(14.5%)	(14.0%)	(2.5%)	24.5%	na	4.0%
South Jersey Industries, Inc. (NYSE-SJI)	11.5%	2.5%	13.0%	8.0%	1.5%	5.5%	7.0%	6.0%	6.0%
Southern Union Company (NYSE-SUG)	35.5%	-	6.0%	14.0%	-	10.5%	10.5%	na	8.0%
Southwest Gas Corporation (NYSE-SWX)	(0.5%)	-	3.0%	7.5%	0.5%	2.0%	9.5%	na	4.0%
Southwestern Energy Company (NYSE-SWN)	25.0%	-	3.5%	5.0%	-	3.0%	17.0%	na	25.5%
UGI Corporation (NYSE-UGI)	24.0%	4.0%	20.0%	19.0%	4.0%	7.0%	5.5%	5.0%	10.0%
WGL Holdings, Inc. (NYSE-WGL)	6.0%	1.5%	3.0%	4.5%	1.5%	4.0%	2.0%	2.0%	4.0%
Williams Companies, Inc. (NYSE-WMB)	(15.0%)	(27.0%)	(6.0%)	(4.5%)	(8.5%)	2.5%	28.5%	29.0%	10.0%
<b>AVERAGE</b>	<b>7.3%</b>	<b>1.4%</b>	<b>4.5%</b>	<b>5.0%</b>	<b>1.9%</b>	<b>4.5%</b>	<b>8.8%</b>	<b>4.8%</b>	<b>7.2%</b>

Source: ValueLine - June 16, 2006

na = not available

**MIDWEST ENERGY, INC. - GAS DEPARTMENT****TEST YEAR ENDED DECEMBER 31, 2005****RATE BASE SUMMARY**

	Company Claim <u>(A)</u>	Recommended Adjustment		Recommended Position <u></u>
1. Total Utility Plant in Service	\$58,157,181	(\$174,089)	(B)	\$57,983,092
Less:				
2. Accumulated Depreciation	(23,799,542)	0		(23,799,542)
3. Net Utility Plant	\$34,357,639	(\$174,089)		\$34,183,550
Plus:				
4. Fuel Stocks - Gas	\$2,979,084	(\$48,900)	(C)	\$2,930,184
5. Wholesale Diesel Fuel	237	0		\$237
6. Materials and Supplies	377,192	0		\$377,192
7. Prepaid Insurance	95,459	0		\$95,459
8. Prepaid Workers Compensation	69,194	0		\$69,194
9. Cash Working Capital	1,328,479	(495,108)	(D)	\$833,371
10. Purchased Gas Working Capital	1,151,748	(1,151,748)	(E)	\$0
11. Investment in NRUCFC	1,578,731	0		\$1,578,731
Less:				
12. Customer Deposits	(\$226,720)	\$0		(\$226,720)
13. Accrued Property Taxes	(431,346)	0		(\$431,346)
14. Total Rate Base	<u>\$41,279,697</u>	<u>(\$1,869,845)</u>		<u>\$39,409,852</u>

## Sources:

(A) Company Filing, Section 3, Schedule 1, page 1 and Section 6, Schedule 1, page 1.

(B) Schedules ACC-4, ACC-5, and ACC-6.

(C) Schedule ACC-7.

(D) Schedule ACC-8.

(E) Schedule ACC-9.

**MIDWEST ENERGY, INC. - GAS DEPARTMENT**

**TEST YEAR ENDED DECEMBER 31, 2005**

**CONSTRUCTION WORK IN PROGRESS**

1. Company Claim	\$306,460	(A)
2. Amount Closed to Date	<u>149,848</u>	(B)
3. Recommended Adjustment	<b><u>(\$156,612)</u></b>	

Sources:

(A) Company Filing, Section 4, Schedule 1, Page 1.

(B) Response to KCC-167.

**MIDWEST ENERGY, INC. - GAS DEPARTMENT**

**TEST YEAR ENDED DECEMBER 31, 2005**

**COMPANY VEHICLES**

1. Gross Plant - Vehicles	\$555,765	(A)
2. Percentage Disallowance	<u>-12.14%</u>	(A)
3. Recommended Adjustment	<u><b>(\$67,477)</b></u>	

Sources:

(A) Response to KCC-27.



**MIDWEST ENERGY, INC. - GAS DEPARTMENT**

**TEST YEAR ENDED DECEMBER 31, 2005**

**BUNKER HILL ACQUISITION-RATE BASE**

1. Assets Acquired	\$50,000 (A)
2. Recommended Adjustment	<u><b>\$50,000</b></u>

Sources:

(A) Response to CURB-82.

**MIDWEST ENERGY, INC. - GAS DEPARTMENT****TEST YEAR ENDED DECEMBER 31, 2005****FUEL STOCKS - GAS**

	(A)	
1. December 2004	\$3,149,437	
2. January 2005	3,149,406	
3. February	2,638,335	
4. March	2,860,379	
5. April	2,834,323	
6. May	2,706,523	
7. June	2,698,612	
8. July	2,926,521	
9. August	2,689,797	
10. September	2,789,244	
11. October	3,365,608	
12. November	3,566,547	
13. December 2005	2,717,660	(B)
	<hr/>	
14. Thirteen Month Average	\$2,930,184	
15. Company Claim	2,979,084	
	<hr/>	
16. Recommended Adjustment	<b><u>(\$48,900)</u></b>	

## Sources:

(A) Company Filing, Section 6, Schedule 2, Page 1.

(B) Response to CURB-81.

**MIDWEST ENERGY, INC. - GAS DEPARTMENT****TEST YEAR ENDED DECEMBER 31, 2005****CASH WORKING CAPITAL**

1. Operating Expenses Per Company	\$10,627,833	(A)
2. Operating Expense Adjustments	<u>(488,486)</u>	(B)
3. Pro Forma Operating Expenses	\$10,139,347	
4. Pro Forma Working Capital Percentage	<u>8.22%</u>	(C)
5. Pro Forma Working Capital Requirement	\$833,371	
6. Company Claim	<u>1,328,479</u>	(A)
7. Recommended Adjustment	<b><u>(\$495,108)</u></b>	

**Sources:**

(A) Company Filing, Section 6, Schedule 6, page 1.

(B) Schedules ACC13, ACC-14, and ACC-16 to ACC-22.

(C) Based on 30 days lag (30/365).

**MIDWEST ENERGY, INC. - GAS DEPARTMENT**

**TEST YEAR ENDED DECEMBER 31, 2005**

**PURCHASED GAS WORKING CAPITAL**

1. Company Claim	\$1,151,748	(A)
2 Recommended Adjustment	<u>(\$1,151,748)</u>	

Sources:

(A) Company Filing, Section 6, Schedule 1, Page 1.

**MIDWEST ENERGY, INC. - GAS DEPARTMENT****TEST YEAR ENDED DECEMBER 31, 2005****OPERATING INCOME SUMMARY**

		Schedule No.
1. Company Claim	\$84,009	1
2. Forfeited Discounts	161,695	11
3. Operating Revenues	25,400	12
4. Uncollectible Expense	77,878	13
5. Payroll Expense	165,254	14
6. Payroll Tax Expense	12,642	15
7. Medical Benefits Expense	178,186	16
8. Pension Expense	42,458	17
9. H2S Conversion Costs	1,774	18
10. Rate Case Costs	9,843	19
11. Corporate Image	5,554	20
12. Lobbying Expenses	6,147	21
13. Other Dues and Donations	1,392	22
14. Depreciation Expense	<u>(1,177)</u>	23
15. Net Operating Income	<b><u>\$771,055</u></b>	

**MIDWEST ENERGY, INC. - GAS DEPARTMENT**

**TEST YEAR ENDED DECEMBER 31, 2005**

**FORFEITED DISCOUNTS**

1. Forfeited Discount Revenue	\$161,695	(A)
2. Recommended Adjustment	<b><u>\$161,695</u></b>	

Sources:

(A) Company Filing, Section 9, Schedule 4, Page 1.

**MIDWEST ENERGY, INC. - GAS DEPARTMENT**

**TEST YEAR ENDED DECEMBER 31, 2005**

**OPERATING REVENUES - DELIVERY**

1. Bunker Hill	\$14,000	(A)
2. Woofter Commercial Development	2,200	(B)
3. Walmart	<u>9,200</u>	(B)
4. Recommended Adjustment	<u><b>\$25,400</b></u>	

Sources:

(A) Response to CURB-82.

(B) Response to CURB-87.

**MIDWEST ENERGY, INC. - GAS DEPARTMENT****TEST YEAR ENDED DECEMBER 31, 2005****UNCOLLECTIBLE EXPENSE**

	<u>Year</u>	<u>Sales Revenue</u> (A)	<u>Uncollectible Expense</u> (A)	<u>Uncollectible Ratio</u>	
1.	2005	\$50,755,088	\$312,109	0.61%	
2.	2004	44,304,082	158,138	0.36%	
3.	2003	44,186,553	177,176	0.40%	
4.	Three Year Average			0.46%	
5.	Pro Forma Revenue @ Present Rates			\$51,185,306	(B)
6.	Pro Forma Uncollectible Expense			\$234,231	(C)
7.	Company Claim			312,109	(A)
8.	Recommended Adjustment			<u>\$77,878</u>	

## Sources:

(A) Response to CURB-57.

(B) Company Filing, Section 9, Schedule 3, Page 1 plus revenue adjustments per Schedules ACC-11 and ACC-12.

(C) Line 4 X Line 5.



**MIDWEST ENERGY, INC. - GAS DEPARTMENT****TEST YEAR ENDED DECEMBER 31, 2005****PAYROLL COSTS**

1 Test Year Payroll Costs Expensed	\$4,885,577	(A)
2. Post Test Year Increase	<u>3.74%</u>	(B)
3. Pro Forma Payroll Increase	\$182,721	
4. Company Claim	<u>347,975</u>	(C)
5. Recommended Adjustment	<u><b>\$165,254</b></u>	

## Sources:

(A) Company Filing, Section 9, Schedule 6, Page 2.

(B) Response to KCC-83.

(C) Company Filing, Section 9, Schedule 6, Page 1.

**MIDWEST ENERGY, INC. - GAS DEPARTMENT**

**TEST YEAR ENDED DECEMBER 31, 2005**

**PAYROLL TAX EXPENSE**

1. Recommended Payroll Adjustment	\$165,254	(A)
2. Payroll Taxes Percentage	<u>7.65%</u>	(B)
3. Operating Income Impact	<u><b>\$12,642</b></u>	

Sources:

(A) Schedule ACC-14.

(B) Reflects statutory rate.

**MIDWEST ENERGY, INC. - GAS DEPARTMENT****TEST YEAR ENDED DECEMBER 31, 2005****MEDICAL BENEFITS EXPENSE**

1. Original Company Claim	\$2,770,152	(A)
2. Revised Company Claim	<u>2,253,821</u>	(B)
3. Recommended Adjustment	\$516,331	
4. Allocation to Gas	<u>34.51%</u>	(C)
5. Recommended Gas Adjustment	<u><b>\$178,186</b></u>	

## Sources:

(A) Derived from Company Filing Section 9, Schedule 8, Page 1.

(B) Response to KCC-133.

(C) Company Filing, Section 9, Schedule 8, Page 1.

**MIDWEST ENERGY, INC. - GAS DEPARTMENT****TEST YEAR ENDED DECEMBER 31, 2005****PENSION EXPENSE**

1. Company Claim	\$1,571,590	(A)
2. Test Year Actual Contribution	<u>1,448,559</u>	(B)
3. Recommended Adjustment	\$123,031	
4. Gas Allocation Percentage	<u>34.51%</u>	(B)
5. Recommended Gas Adjustment	<u><b>\$42,458</b></u>	

**Sources:**

(A) Derived from Company Filing, Section 9, Schedule 8, Page 1.

(B) Company Filing, Section 9, Schedule 8, Page 1.

**MIDWEST ENERGY, INC. - GAS DEPARTMENT****TEST YEAR ENDED DECEMBER 31, 2005****H2S CONVERSION COSTS**

1. Total Costs Incurred To Date	\$146,231	(A)
2. Internal Costs	<u>(9,321)</u>	(A)
3. Current Balance	\$136,910	
4. Average Balance of Conversion Costs	\$68,455	(B)
5. Recommended Cost of Capital	<u>7.14%</u>	(C)
6. Pro Forma Annual Carrying Costs	\$4,890	
7. Amortization Period - Years	<u>3</u>	(D)
8. Total Pro Forma Carrying Costs	\$14,670	
9. Company Claim	<u>16,444</u>	(D)
10. Recommended Adjustment	<u><b>\$1,774</b></u>	

## Sources:

(A) Response to KCC-137.

(B) Line 3 / 2.

(C) Schedule ACC-2.

(D) Company Filing, Section 9, Schedule 7, Page 2.

**MIDWEST ENERGY, INC. - GAS DEPARTMENT****TEST YEAR ENDED DECEMBER 31, 2005****RATE CASE COSTS**

1. Estimated Costs to Filing	\$30,000	(A)
2. One-Half of Estimated Discovery Costs	<u>12,508</u>	(A)
3. Subtotal	\$42,508	
4. Amount Spent to Date	<u>12,979</u>	(B)
5. Recommended Adjustment	\$29,529	
6. Amortization Period	<u>3</u>	(A)
7. Recommended Annual Adjustment	<u><b>\$9,843</b></u>	

## Sources:

(A) Company Filing, Section 9, Schedule, Page 1.

(B) Response to KCC-157.

**MIDWEST ENERGY, INC. - GAS DEPARTMENT**

**TEST YEAR ENDED DECEMBER 31, 2005**

**CORPORATE IMAGE**

1. Heritage Company Test Year Costs	\$11,108	(A)
2. Allocation to Gas (%)	<u>50.00%</u>	(A)
3. Recommended Adjustment	<u><b>\$5,554</b></u>	

Sources:

(A) Response to KCC-155.

**MIDWEST ENERGY, INC. - GAS DEPARTMENT****TEST YEAR ENDED DECEMBER 31, 2005****LOBBYING EXPENSES**

	(A)	Percent to <u>Lobbying</u> (B)	Amount <u>To Lobbying</u>
1. NRECA	\$20,882	28.00%	5,847
2. Kansas Chamber of Commerce	1,200	25.00%	300
3. Recommended Adjustment			<b><u>\$6,147</u></b>

## Sources:

(A) Response to KCC-46.

(B) Response to CURB-65.



**MIDWEST ENERGY, INC. - GAS DEPARTMENT**

**TEST YEAR ENDED DECEMBER 31, 2005**

**OTHER DUES AND DONATIONS**

1. Chamber Dinner Expenses	\$1,152	(A)
2. Four Leaf Clover Sponsor	<u>240</u>	(A)
3. Total Recommended Adjustment	<u><b>\$1,392</b></u>	

Sources:

(A) Response to KCC-75.

**MIDWEST ENERGY, INC. - GAS DEPARTMENT**

**TEST YEAR ENDED DECEMBER 31, 2005**

**DEPRECIATION EXPENSE**

1. Bunker Hill Assets Acquired	\$50,000	(A)
2. Composite Depreciation Rate	<u>2.35%</u>	(B)
3. Recommended Adjustment	<u><b>\$1,177</b></u>	

Sources:

(A) Response to CURB-82.

(B) Composite rate on distribution plant per Company Filing,  
Section 10, Schedule 1, Page 1.

**MIDWEST ENERGY, INC. - GAS DEPARTMENT**

**TEST YEAR ENDED DECEMBER 31, 2005**

**REVENUE MULTIPLIER**

1. Revenue	100.00%	
2. Uncollectibles	<u>0.46%</u>	(A)
3. Operating Income	99.54%	(B)
4. Revenue Multiplier	<u><b>1.00460</b></u>	(C)

Sources:

(A) Schedule ACC-13.

(B) Line 1 - Line 2.

(C) Line 1 / Line 3.

**MIDWEST ENERGY, INC. - GAS DEPARTMENT****TEST YEAR ENDED DECEMBER 31, 2005****REVENUE REQUIREMENT IMPACT OF ADJUSTMENTS**

1. Rate of Return	(\$555,437)
<b>Rate Base Adjustments:</b>	
2. Construction Work In Progress	(11,187)
3. Vehicles	(4,820)
4. Bunker Hill Acquisition	3,572
5. Fuel Stocks - Gas	(3,493)
6. CWC-Operating Expenses	(35,367)
7. CWC-Purchased Gas Costs	(82,272)
<b>Operating Income Adjustments</b>	
8. Forfeited Discounts	(161,695)
9. Operating Revenues	(25,400)
10. Uncollectible Expense	(77,878)
11. Payroll Expense	(165,254)
12. Payroll Tax Expense	(12,642)
13. Medical Benefits Expense	(178,186)
14. Pension Expense	(42,458)
15. H2S Conversion Costs	(1,774)
16. Rate Case Costs	(9,843)
17. Corporate Image	(5,554)
18. Lobbying Expenses	(6,147)
19. Other Dues and Donations	(1,392)
20. Depreciation Expense	1,177
21. Revenue Multiplier	9,397
22. Total Recommended Adjustments	(\$1,366,654)
24. Company Claim	3,420,142
26. Recommended Revenue Requirement Deficiency	<b><u>\$2,053,488</u></b>

## MIDWEST ENERGY, INC. - GAS DEPARTMENT

TEST YEAR ENDED DECEMBER 31, 2005

## PRO FORMA INCOME STATEMENT

	Per Company	Recommended Adjustments	Pro Forma Present Rates	Recommended Rate Adjustment	Pro Forma Proposed Rates
1. Operating Revenues (A)	\$50,998,211	\$187,095	\$51,185,306	\$2,053,488	\$53,238,794
2. Operating Expenses (B)	47,877,753	(488,486)	47,389,267	9,440	47,398,707
3. Depreciation and Amortization (C)	2,337,398	1,177	2,338,575	0	2,338,575
4. Taxes Other Than Income (D)	696,872	(12,642)	684,230	0	684,230
5. Other Operating Expense (Income)	2,179	0	2,179	0	2,179
6. Net Operating Margin	\$84,009	\$687,046	\$771,055	\$2,044,048	\$2,815,103
7. Rate Base (E)	\$41,279,697		\$39,409,852		\$39,409,852
8. Rate of Return	<u>0.20%</u>		<u>1.96%</u>		<u>7.14%</u>

## Sources:

- (A) Schedules ACC-11 and ACC-12.  
(B) Schedules ACC-13, ACC-14, and ACC-16-ACC-22.  
(C) Schedule ACC-23.  
(D) Schedule ACC-15.  
(E) Schedule ACC-3.

**MIDWEST ENERGY, INC. - GAS DEPARTMENT****TEST YEAR ENDED DECEMBER 31, 2005****CALCULATION OF COVERAGES**

	Present Rates Per Company	CURB Pro Forma Present Rates	CURB Pro Forma Proposed Rates	
1. Net Operating Margin	\$84,009	\$771,055	\$2,815,103	(A)
2. Other Income	209,814	209,814	209,814	(B)
3. Other Deductions	(1,148,861)	(1,148,861)	(1,148,861)	(B)
4. Net Margin (Loss)	(\$855,038)	(\$167,992)	\$1,876,056	
5. Net Margin	(\$855,038)	(\$167,992)	\$1,876,056	
6. Interest Expense	1,414,877	1,414,877	1,414,877	(C)
7. Depreciation and Amortization	2,337,398	2,338,575	2,338,575	(A)
8. Principal and Interest Expense	3,026,249	3,026,249	3,026,249	(C)
9. TIER	0.40	0.88	2.33	(D)
10. DSC	0.96	1.18	1.86	(E)

**Sources:**

(A) Schedule ACC-26.

(B) Company Filing, Section 9, Schedule 1, Page 1.

(C) Company Filing, Section 7, Schedule 4, Page 1.

(D) (Line 5 + Line 6) / Line 6.

(E) (Line 5 + Line 6 + Line 7) / Line 8.

**Appendix C**  
**Referenced Data Requests**

CURB-7

CURB-30

CURB-45

CURB-52

CURB-57

CURB-65

CURB-78

CURB-81

CURB-82

CURB-83

CURB-87

KCC-27

KCC-41

KCC-46

KCC-59

KCC-75

KCC-79

KCC-80

KCC-83

KCC-91

KCC-120

KCC-133

KCC-137 (Partial)

KCC-155

KCC-157

KCC-167

KCC-169

**Citizens' Utility Ratepayer Board  
Information Request**

C.U.R.B.  
Rec'd MAY 12 2006  
Request No: 7 Consumer Counsel

Docket No. 06-MDWG-1027-RTS

MIDWEST ENERGY, INC.

Request No: 7 Consumer Counsel

Request Date: April 25, 2006

*Corrected response*

Due Date: May 9, 2006

**Please Provide the Following:**

Regarding page 9 of Mr. Edwards' testimony, does CFC have other coverage requirements in addition to the debt service coverage requirement of 1.35? If so, please identify all such requirements.

Submitted By: David Springe

Submitted To: Tom Meis

No other coverage requirements are in place for Midwest Energy.

If for some reason, the above information cannot be provided by the date requested, please provide a written explanation.

**Verification of Response**

I have read the foregoing Information Request and answer(s) thereto and find the answer(s) to be true, accurate, full and complete, and it contains no material misrepresentations or omissions to the best of my knowledge and belief, and I will disclose to the CURB Staff any matter subsequently discovered which affects the accuracy or completeness of the answer(s) to this Information Request.

Signed: \_\_\_\_\_

*Thomas J. Meis*

Date: \_\_\_\_\_

*5/9/06*



**Citizens' Utility Ratepayer Board**  
Information Request

C. U. R. B.  
Rec'd MAY 05 2006  
Consumer Counsel

Docket No. 06-MDWG-1027-RTS

MIDWEST ENERGY, INC.

Request No: Insert DR# 30

Request Date: April 25, 2006

Due Date: May 9, 2006

RE: Data Requests for Midwest Energy, Inc. from the Citizens' Utility Ratepayer Board.

**Please Provide the Following:**

Regarding page 17 of Mr. Volker's testimony, what is the basis for removing forfeited discount revenue from the Company's pro forma revenue claim?

Submitted By: David Springe

Submitted To: Patrick Parke

Response by Michael Volker

"Forfeited Discount Revenue" is a part of normal operating revenues and therefore should not have been removed from the pro forma revenue.

If for some reason, the above information cannot be provided by the date requested, please provide a written explanation.

**Verification of Response**

I have read the foregoing Information Request and answer(s) thereto and find the answer(s) to be true, accurate, full and complete, and it contains no material misrepresentations or omissions to the best of my knowledge and belief; and I will disclose to the CURB Staff any matter subsequently discovered which affects the accuracy or completeness of the answer(s) to this Information Request.

Signed: \_\_\_\_\_

*Michael J. Volker*

Date: \_\_\_\_\_

5/3/2006

Rec'd MAY 11 2006

Consumer Counsel

**Citizens' Utility Ratepayer Board  
Information Request**

Docket No. 06-MDWG-1027-RTS

MIDWEST ENERGY, INC.

Request No: 45

Request Date: April 25, 2006

Due Date: May 9, 2006

RE: Salary increases.

**Please Provide the Following:**

When do employees receive salary increases, i.e. do all employees receive increases on a specific date or are increases granted on the employee's anniversary date?

Submitted By: David Springe

Submitted To: Pat Parke

Response by Sharon K. Dreher.

Union employees receive wage increases on January 1.

Non-union employees receive wage increases effective the beginning of the payroll period that includes March 1.

The President &amp; General Manager's increase is effective January 1.

If for some reason, the above information cannot be provided by the date requested, please provide a written explanation.

**Verification of Response**

I have read the foregoing Information Request and answer(s) thereto and find the answer(s) to be true, accurate, full and complete, and it contains no material misrepresentations or omissions to the best of my knowledge and belief; and I will disclose to the CURB Staff any matter subsequently discovered which affects the accuracy or completeness of the answer(s) to this Information Request.

Signed: 

Date: 5/8/06

**Citizens' Utility Ratepayer Board  
Information Request**

Docket No. 06-MDWG-1027-RTS

MIDWEST ENERGY, INC.

Request No: 52

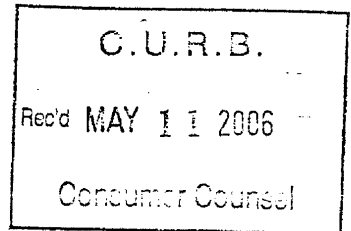
Request Date: April 25, 2006

Due Date: May 9, 2006

RE:

**Please Provide the Following:**

Please describe any changes in benefits offered to a) officers or b) employees in any of the past five years or projected for the future.



Submitted By: David Springe

Submitted To: Patrick Parke

**Response by Wanda Kuhn**

- a) There are no separate benefits for officers.
- b) 9/1/02 – Effective date for the Deferred Compensation Plan for Employees

**Group Health Plan changes:**

1/1/2004 - The family deductible and co-insurance changed from two times the individual amount to three times. Charges for prescription drugs no longer applied to the deductible and co-insurance. Participants received a prescription drug card with co-payments of \$15/\$30/\$45.

1/1/06 - The Plan I individual deductible changed from \$500 to \$1000.

In 2004, the number of holidays for non-union employees changed from eight to nine. Union employees received their ninth holiday in 1999.

If for some reason, the above information cannot be provided by the date requested, please provide a written explanation.

**Verification of Response**

I have read the foregoing Information Request and answer(s) thereto and find the answer(s) to be true, accurate, full and complete, and it contains no material misrepresentations or omissions to the best of my knowledge and belief; and I will disclose to the CURB Staff any matter subsequently discovered which affects the accuracy or completeness of the answer(s) to this Information Request.

Signed: \_\_\_\_\_

*Wanda Kuhn*

Date: \_\_\_\_\_

*5/9/06*

Rec'd MAY 12 2006

Consumer Counsel

**Citizens' Utility Ratepayer Board  
Information Request**

Docket No. 06-MDWG-1027-RTS

MIDWEST ENERGY, INC.

Request No: 57

Request Date: April 25, 2006

Due Date: May 9, 2006

**Please Provide the Following:**

Please provide, for each of the past five years a) the amount of bad debts written-off, b) the amount of bad debts written-off that were subsequently recovered, c) the amount of any additions to a bad debt reserve, and d) the total revenues from gas sales.

Submitted By: David Springe

Submitted To: Tom Meis

See attached.

If for some reason, the above information cannot be provided by the date requested, please provide a written explanation.

**Verification of Response**

I have read the foregoing Information Request and answer(s) thereto and find the answer(s) to be true, accurate, full and complete, and it contains no material misrepresentations or omissions to the best of my knowledge and belief; and I will disclose to the CURB Staff any matter subsequently discovered which affects the accuracy or completeness of the answer(s) to this Information Request.

Signed: \_\_\_\_\_

*Thomas J. Meis*

Date: \_\_\_\_\_

*5/9/06*

Midwest Energy, Inc.  
Bad Debts

Attachment to CURB DR No. 57

a.) Bad debts expense for the last five years are as follows:

2005	312,109
2004	158,138
2003	177,176
2002	52,970
2001	181,589

b.) The amount of bad debts written-off and subsequently recovered is not readily available. These amounts are minimal, probably under \$10,000 for gas.

c.) The Reserve for Bad Debts had the following balances at the end of the year.

2005	\$	147,651
2004		184,929
2003		70,819
2002		66,722
2001		69,222

d.) Total Revenues from gas sales for the last five years are as follows:

2005	50,755,088
2004	44,304,082
2003	44,186,553
2002	38,967,369
2001	38,773,690

**Citizens' Utility Ratepayer Board**  
Information Request

RECEIVED  
Filed MAY 09 2006  
Consumer Counsel

Docket No. 06-MDWG-1027-RTS

MIDWEST ENERGY, INC.

Request No: CURB-65

Request Date: April 25, 2006

Due Date: May 9, 2006

**Please Provide the Following:**

Please provide information from the AGA (or any similar organization) showing the percentage of dues that is classified as legislative advocacy.

Submitted By: David Springe

Submitted To: Patrick Parke

American Gas Association (AGA) - Midwest Energy is not a member.

Kansas Electric Cooperatives (KEC) - 18.3% of the total KEC dues assessment is budgeted for Government Relations.

Midwest Energy Association (MEA) - No portion of MEA dues are used for legislative advocacy.

Kansas Chamber of Commerce and Industry (KCCI) - 25%.

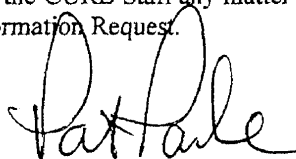
National Rural Electric Cooperative Association - 28%.

If for some reason, the above information cannot be provided by the date requested, please provide a written explanation.

**Verification of Response**

I have read the foregoing Information Request and answer(s) thereto and find the answer(s) to be true, accurate, full and complete, and it contains no material misrepresentations or omissions to the best of my knowledge and belief; and I will disclose to the CURB Staff any matter subsequently discovered which affects the accuracy or completeness of the answer(s) to this Information Request.

Signed: \_\_\_\_\_



Date: \_\_\_\_\_

5-8-06

**Citizens' Utility Ratepayer Board**  
Information Request

C.U.R.B.  
Filed JUL 11 2006  
CITIZENS' UTILITY RATEPAYER BOARD

Docket No. 06-MDWG-1027-RTS

MIDWEST ENERGY, INC.

Request No. 78

Request Date: April 25, 2006

Due Date: May 9, 2006

**Please Provide the Following:**

Regarding the response to KCC-27, how are ratepayers compensated for the personal use of vehicles by employees?

Submitted By: David Springe

Submitted To: Tom Meis

Personal use of vehicles is an employee benefit available only to employees that have a need for a company vehicle.

If for some reason, the above information cannot be provided by the date requested, please provide a written explanation.

**Verification of Response**

I have read the foregoing Information Request and answer(s) thereto and find the answer(s) to be true, accurate, full and complete, and it contains no material misrepresentations or omissions to the best of my knowledge and belief; and I will disclose to the CURB Staff any matter subsequently discovered which affects the accuracy or completeness of the answer(s) to this Information Request.

Signed: Thomas Meis

Date: 6/17/06

**Citizens' Utility Ratepayer Board**  
Information Request

Docket No. 06-MDWG-1027-RTS

MIDWEST ENERGY, INC.

Request No: 81 C.U.R.B. 71

Request Date: April 25, 2006

Date JUN 26 2006

Due Date: May 9, 2006

Consumer Affairs

**Please Provide the Following:**

Please reconcile the December 2005 gas inventory balance of \$3,149,437 shown in the response to KCC-102 with the December 2005 gas inventory balance of \$3,353,361 shown in Section 6, Schedule 2, Page 1. Please provide any necessary corrections to the data request response and/or the filing.

Submitted By: David Springe

Submitted To: Tom Meis

The balance at December 2005 shown on KCC – 102 was \$2,717,660 for a difference of \$635,700. An audit adjustment of \$635,700 was made subsequent to the filing which reflects a withdrawal from storage during December 2005.

If for some reason, the above information cannot be provided by the date requested, please provide a written explanation.

**Verification of Response**

I have read the foregoing Information Request and answer(s) thereto and find the answer(s) to be true, accurate, full and complete, and it contains no material misrepresentations or omissions to the best of my knowledge and belief; and I will disclose to the CURB Staff any matter subsequently discovered which affects the accuracy or completeness of the answer(s) to this Information Request.

Signed: \_\_\_\_\_

*Thomas J. Meis*

Date: \_\_\_\_\_

*6/26/06*



**Citizens' Utility Ratepayer Board**  
Information Request

Docket No. 06-MDWG-1027-RTS

MIDWEST ENERGY, INC.

Request No: 82

Request Date: April 25, 2006

Due Date: May 9, 2006

**Please Provide the Following:**

Regarding the response to KCC-120, please provide a) the net book value of the assets being acquired, b) the total purchase price, c) estimated acquisition premium, if any, d) proposed ratemaking treatment of any acquisition premium, e) number of customers being acquired, and f) rates currently charged by the City of Bunker Hill, and g) estimated annual revenue at present rates.

Submitted By: David Springe

Submitted To: Tom Meis

- a. These assets are currently non-regulated and therefore their accounting (which we do have a record of at this time) may differ from the guidelines within the FERC Uniform System of Accounts. However, the system is only about 15 years old, so there should be net book value remaining.
- b. We are offering \$50,000 which needs to be approved by a citizen vote.
- c. Because the system is only 15 years old, we believe all of purchase price will be assigned to assets with no remainder assigned to acquisition premium.
- d. N/A
- e. About 60
- f. They are currently charging the same rate as Midwest on delivery and adding 6 cents per MMBTU on the gas cost.
- g. Approximately \$14,000 per year of delivery revenue.

If for some reason, the above information cannot be provided by the date requested, please provide a written explanation.

**Verification of Response**

I have read the foregoing Information Request and answer(s) thereto and find the answer(s) to be true, accurate, full and complete, and it contains no material misrepresentations or omissions to the best of my knowledge and belief; and I will disclose to the CURB Staff any matter subsequently discovered which affects the accuracy or completeness of the answer(s) to this Information Request.

Signed: Thomas J. Meis

Date: 6/26/06

**Citizens' Utility Ratepayer Board**  
Information Request

Recd JUN 9 2006

Conservation Council

Docket No. 06-MDWG-1027-RTS

MIDWEST ENERGY, INC.

Request No: DR# 83

Request Date: June 19, 2006

Due Date: July 2, 2006

RE: Data Requests for Midwest Energy, Inc. from the Citizens' Utility Ratepayer Board.

**Please Provide the Following:**

What is the Company's rationale for excluding revenues for services provided to Bunker Hill in the test year from its pro forma revenue claim?

Submitted By: David Springe

Submitted To: Patrick Parke

**Response by Michael Volker**

Midwest Energy provides various services to the City of Bunker Hill and has reduced rate case revenues for a portion of these services - the sale and delivery of gas to the municipal gas system. The revenues (\$54,409) for the sale of gas to the City are based on the Midwest Energy M System Commercial Transportation rate plus the actual cost of gas delivered (\$49,468). Midwest passes through the gas at cost and provides the delivery to the city's system at the regulated commercial transportation delivery rate although Bunker Hill is not a regulated customer. Since Midwest removes the cost of gas and volumes for gas associated with Bunker Hill from monthly Gas Supply Cost adjustments (i.e. the PGA), a mismatch would occur between PGA costs and the cost of gas in the General Ledger if these were not accounted for.

In addition, Midwest Energy provides meter reading and billing services for The City of Bunker Hill. Midwest Energy charges Bunker Hill for these services and credits account 903 (meter reading and billing) for the amount of the charges to Bunker Hill.

It is worth noting that the City of Bunker Hill has approved of the sale of its gas distribution system to Midwest Energy. The sale is subject to voter approval during the August 1<sup>st</sup> primary and from the KCC. Midwest Energy anticipates approvals and expects to add the 60 customers to its retail customer base soon.

If for some reason, the above information cannot be provided by the date requested, please provide a written explanation.

**Verification of Response**

I have read the foregoing Information Request and answer(s) thereto and find the answer(s) to be true, accurate, full and complete, and it contains no material misrepresentations or omissions to the best of my knowledge and belief; and I will disclose to the CURB Staff any matter subsequently discovered which affects the accuracy or completeness of the answer(s) to this Information Request.

Signed: \_\_\_\_\_

*Michael Volker*

Date: \_\_\_\_\_

*6/27/2006*

**Citizens' Utility Ratepayer Board**  
Information Request

CURB  
MIDWEST ENERGY, INC.  
Request No. 87

Docket No. 06-MDWG-1027-RTS

MIDWEST ENERGY, INC.

Request No. 87

Request Date: April 25, 2006

Due Date: May 9, 2006

**Please Provide the Following:**

Regarding the response to KCC-101, please provide the estimated revenue (margin) anticipated to be received from the Walmart store and Woofter Commercial Development.

Submitted By: David Springe

Submitted To: Tom Meis

Woofter : Approximately \$2,200 per year of delivery revenue.

Walmart: Approximately \$9,200 per year of delivery revenue.

If for some reason, the above information cannot be provided by the date requested, please provide a written explanation.

**Verification of Response**

I have read the foregoing Information Request and answer(s) thereto and find the answer(s) to be true, accurate, full and complete, and it contains no material misrepresentations or omissions to the best of my knowledge and belief; and I will disclose to the CURB Staff any matter subsequently discovered which affects the accuracy or completeness of the answer(s) to this Information Request.

Signed: \_\_\_\_\_

*Thomas S. Meis*

Date: \_\_\_\_\_

*6/26/06*

**Kansas Corporation Commission  
Information Request**

Docket No. 06-MDWG-1027-RTS

MIDWEST ENERGY, INC.

Request No: 27

Request Date: March 24, 2006

Due Date: April 14, 2006

RE: Motor Vehicle Policy

**Please Provide the Following:**

A list of all cars owned or leased by the Applicant as of the end of the test year. Each car should include the amount capitalized, accumulated depreciation, to whom car is assigned, year make and model, location normally stored at end of work day (office, home, etc.), personal/business mileage, and employee reimbursements during the test year. Please also provide a copy of the utility's motor vehicle policy. If one does not exist, please state such.

Submitted By: George Rohrer

Submitted To: Tom Meis

See attached for list of cars and SUVs. Midwest Energy, Inc. is in the process of developing a formal vehicle purchase policy. Current practice for passenger vehicles and certain small pickup trucks is to purchase used vehicles with between 5,000 and 20,000 miles. Vehicles are replaced at around 150,000 miles. A copy of the draft policy is available upon request.

If for some reason, the above information cannot be provided by the date requested, please provide a written explanation.

**Verification of Response**

I have read the foregoing Information Request and answer(s) thereto and find the answer(s) to be true, accurate, full and complete, and it contains no material misrepresentations or omissions to the best of my knowledge and belief; and I will disclose to the Commission Staff any matter subsequently discovered which affects the accuracy or completeness of the answer(s) to this Information Request.

Signed: \_\_\_\_\_

*Thomas S. Meis*

Date: \_\_\_\_\_

*4/18/06*

## CARS OWNED - MIDWEST ENERGY INC

Veh #	Year	Make	Type	Driver	Location	Capitalized	Accum Deprec	Total Personal Mileage	Total Business Mileage
1	2002	Dodge	Durango SLT 4x4	Giebler, D	Hays	22,412.25	-9,961.28	1895	12290
11	1999	Buick	Century 4-Door	Radford	Hays	20,648.60	-20,648.60	1731	6691
12	2000	Pontiac	Bonneville 4-Door	Engel	Hays	17,647.00	-10,364.44	3451	12353
16	2004	Chevrolet	Trailblazer	Supervisor	Great Bend	26,890.59	-5,975.84	4412	9107
40	2005	Ford	Excursion XLT 4x4	Schloemer	Great Bend	22,968.20	0.00	1232	25041
118	1999	Ford	Crown Victoria 4-Door	Berryman	Great Bend	21,929.24	-21,929.24	892	24708
120	2000	Jeep	Grand Cherokee	Sjoholm	Hays	24,864.56	-17,760.60	1254	17586
121	2003	Oldsmobile	Bravada AWD	Swift	Hays	25,012.39	-7,940.60	942	13357
127	2003	Chevrolet	Suburban-3/4 4x4	Weigel	Hays	32,670.58	-15,881.95	696	14495
140	2000	Chrysler	300M 4-Door	Muirhead	Hays	24,357.00	-22,424.54	2303	30567
145	2002	Mercury	Mountaineer	Lehman, E	Hays	25,612.72	-13,823.04	2399	15573
150	2000	Chrysler	300M	Dowling	Hays	19,426.92	-10,484.58	1331	11598
152	2002	GMC	Envoy 4x4	Albert, Brett	Hays	28,419.60	-18,044.40	1120	8092
161	2003	Chevrolet	Trailblazer	Lowenthal	Scott City	29,783.70	-16,074.18	433	20314
165	2003	Chevrolet	Impala	Parke	Hays	14,345.18	-5,692.75	3485	11214
168	2002	Buick	LeSabre	Sadeghi	Hays	18,129.30	-10,935.26	5008	15016
174	2002	Dodge	Durango SLT 4x4	Rempe	Hays	28,398.82	-19,373.64	0	7164
182	2002	Pontiac	Bonneville	Helm	Hays	20,961.58	-11,063.32	691	7093
187	2002	Chevrolet	Trailblazer LT 4x4	O'Dell	Hays	29,531.27	-23,906.76	3016	12308
210	2001	Chrysler	300M	Berg	Hays	20,227.92	-10,916.72	1565	16477
518	2002	Ford	Explorer 4x4	Schoenfeld	Colby	29,571.70	-18,306.60	1255	19129
2747	2002	Chevrolet	Trailblazer	Bohl	Phillipsburg	24,797.90	-13,383.42	413	8436
2842	2001	Ford	Explorer 4x4	Mettlen	Scott City	27,158.06	-23,709.95	1677	20739

<b>555,765.08</b>	<b>-328,601.71</b>	<b>41,201.00</b>	<b>339,348.00</b>
-------------------	--------------------	------------------	-------------------

**Kansas Corporation Commission**  
Information Request

Docket No. 06-MDWG-1027-RTS

MIDWEST ENERGY, INC.

Request No: 41

Request Date: March 24, 2006

Due Date: April 14, 2006

RE: Lobbying

**Please Provide the Following:**

A detailed listing of all legislative advocacy (lobbying) expenses included in the test year cost of service. For each item listed, please indicate the name of the recipient, a brief description of the services provided, the amount paid, the date paid, and the account to which the payment was recorded.

Submitted By: George Rohrer

Submitted To: Tom Meis

No outside lobbying expenses exist for test year.

If for some reason, the above information cannot be provided by the date requested, please provide a written explanation.

**Verification of Response**

I have read the foregoing Information Request and answer(s) thereto and find the answer(s) to be true, accurate, full and complete, and it contains no material misrepresentations or omissions to the best of my knowledge and belief; and I will disclose to the Commission Staff any matter subsequently discovered which affects the accuracy or completeness of the answer(s) to this Information Request.

Signed: Thomas S. Meis

Date: 4/6/06

**Kansas Corporation Commission**  
Information Request

Docket No. 06-MDWG-1027-RTS

MIDWEST ENERGY, INC.

Request No: 46

Request Date: March 24, 2006

Due Date: April 14, 2006

RE: Dues

**Please Provide the Following:**

Please provide a listing of all payments made to industry associations, including memberships, included in the Applicant's test year expenses. Please include the amount paid, date paid, payee, and the account to which the payments were recorded.

Submitted By: George Rohrer

Submitted To: Tom Meis

See attached.

If for some reason, the above information cannot be provided by the date requested, please provide a written explanation.

**Verification of Response**

I have read the foregoing Information Request and answer(s) thereto and find the answer(s) to be true, accurate, full and complete, and it contains no material misrepresentations or omissions to the best of my knowledge and belief; and I will disclose to the Commission Staff any matter subsequently discovered which affects the accuracy or completeness of the answer(s) to this Information Request.

Signed: Tom S. Meis

Date: 4/6/06

COMPANY 001

MIDWEST ENERGY, INC.

COM-BU-FER-SU-SU-CC  
 SELECTED ACCOUNT NO 001-02-930-20-30-\*\*

\* P=POSTED U=UNPOSTED

COM-BU-FER-SU-SU-CC	JNRL NO*	DESCRIPTION	PRD	DATE	SOURCE	REFERENCE	PROJECT	CURRENCY	DEBIT AMOUNT	CREDIT AMOUNT
RESOURCE	WORKORDER	LOCATION	TASK				hours			
-----										
001-02-930-20-30		SUBACCOUNT								
001-02-930-20-30-01		INDUSTRY ASSN DUES/MEMBERSHIPS USD								
BEGINNING BALANCE								.00	.00B	
18985 P		INDUSTRY ASSN DUES/MEMBERSHIPS	14	2/02/2006	OTHER	YE JRN		USD	.00	.00
19051 P		INDUSTRY ASSN DUES/MEMBERSHIPS	14	2/08/2006	OTHER	YR JRNL 2		USD	.00	.00
19058 P		INDUSTRY ASSN DUES/MEMBERSHIPS	14	2/09/2006	OTHER	YE JRNL 3		USD	.00	.00
19169 P		INDUSTRY ASSN DUES/MEMBERSHIPS	14	3/06/2006	OTHER	YE JRNL		USD	.00	.00
14 ADJ TOTALS								.00	.00*	
ENDING BALANCE								.00	.00E	
001-02-930-20-30-03		INDUSTRY ASSN DUES/MEMBERSHIPS USD								
BEGINNING BALANCE								.00	.00B	
17768 P		KANSAS MUNICIPAL UTILITI	13277 04	4/28/2005	A/P	APINVOICE		USD	67.20	.00
04 APR TOTALS								.00	67.20*	
17864 P		KANSAS REC MANAGERS ASSN	14573 05	5/09/2005	A/P	APINVOICE		USD	24.00	.00
17864 P		COMMERCE BANK	12747 05	5/09/2005	A/P	APINVOICE		USD	343.88	.00
05 MAY TOTALS								.00	367.88*	
18052 P		COMMERCE BANK	12747 06	6/29/2005	A/P	APINVOICE		USD	835.34	.00
06 JUN TOTALS								.00	835.34*	
18280 P		NRECA	11963 08	8/19/2005	A/P	APINVOICE		USD	20,882.40	.00
08 AUG TOTALS								.00	20,882.40*	
18512 P		HAYS ARTS COUNCIL	11174 10	10/10/2005	A/P	APINVOICE		USD	144.00	.00
10 OCT TOTALS								.00	144.00*	
18662 P		MIDWEST ENERGY ASSOC	11798 11	11/29/2005	A/P	APINVOICE		USD	10,378.37	.00
11 NOV TOTALS								.00	10,378.37*	
18985 P		INDUSTRY ASSN DUES/MEMBERSHIPS	14	2/02/2006	OTHER	YE JRN		USD	.00	32,675.19
19051 P		INDUSTRY ASSN DUES/MEMBERSHIPS	14	2/08/2006	OTHER	YR JRNL 2		USD	.00	.00
19058 P		INDUSTRY ASSN DUES/MEMBERSHIPS	14	2/09/2006	OTHER	YE JRNL 3		USD	.00	.00
19169 P		INDUSTRY ASSN DUES/MEMBERSHIPS	14	3/06/2006	OTHER	YE JRNL		USD	.00	.00
14 ADJ TOTALS								.00		32,675.19*
ENDING BALANCE								.00	.00E	
001-02-930-20-30-04		INDUSTRY ASSN DUES/MEMBERSHIPS USD								
BEGINNING BALANCE								.00	.00B	
17358 P		COMMERCE BANK	12747 02	2/04/2005	A/P	APINVOICE		USD	9.72	.00
17449 P		KANSAS CHAMBER OF COMMER	15213 02	2/25/2005	A/P	APINVOICE		USD	240.00	.00



COMPANY 001

MIDWEST ENERGY, INC.

COM-BU-FER-SU-SU-CC  
 \*SELECTED ACCOUNT NO 001-02-930-20-30-\*\*

\* P=POSTED U=UNPOSTED

COM-BU-FER-SU-SU-CC

JNRL NO*	DESCRIPTION	PRD	DATE	SOURCE	REFERENCE	PROJECT	CURRENCY	DEBIT AMOUNT	CREDIT AMOUNT
RESOURCE	WORKORDER	LOCATION	TASK			hours			
17449	P KANSAS CHAMBER OF COMMER	15213	02	2/25/2005	A/P	APINVOICE	USD	720.00	.00
02	FEB TOTALS						.00	969.72*	
17521	P COMMERCE BANK	12747	03	3/04/2005	A/P	APINVOICE	USD	89.99	.00
17607	P COMMERCE BANK	12747	03	3/30/2005	A/P	APINVOICE	USD	24.57	.00
03	MAR TOTALS						.00	114.56*	
17709	P FEDERICO CONSULTING	16550	04	4/08/2005	A/P	APINVOICE	USD	34.22	.00
17725	P LEADERSHIP KANSAS	11636	04	4/18/2005	A/P	APINVOICE	USD	100.00	.00
04	APR TOTALS						.00	134.22*	
17864	P COMMERCE BANK	12747	05	5/09/2005	A/P	APINVOICE	USD	43.02	.00
05	MAY TOTALS						.00	43.02*	
18011	P WKPEDA - GARDEN CITY	12877	06	6/10/2005	A/P	APINVOICE	USD	48.00	.00
18052	P COMMERCE BANK	12747	06	6/29/2005	A/P	APINVOICE	USD	1,226.83	.00
06	JUN TOTALS						.00	1,274.83*	
18300	P KANSAS WILDSCAPE	11485	08	8/26/2005	A/P	APINVOICE	USD	240.00	.00
08	AUG TOTALS						.00	240.00*	
18415	P LEADERSHIP KANSAS	11636	09	9/26/2005	A/P	APINVOICE	USD	100.00	.00
09	SEP TOTALS						.00	100.00*	
18687	P KANSAS CHAMBER OF COMMER	15213	12	12/05/2005	A/P	APINVOICE	USD	1,152.00	.00
18755	P KANSAS CHAMBER OF COMMER	15213	12	12/12/2005	A/P	APINVOICE	USD	480.00	.00
12	DEC TOTALS						.00	1,632.00*	
18985	P INDUSTRY ASSN DUES/MEMBERSHIPS	14		2/02/2006	OTHER	YE JRN	USD	.00	4,508.35
19051	P INDUSTRY ASSN DUES/MEMBERSHIPS	14		2/08/2006	OTHER	YR JRNL 2	USD	.00	.00
19058	P INDUSTRY ASSN DUES/MEMBERSHIPS	14		2/09/2006	OTHER	YE JRNL 3	USD	.00	.00
19169	P INDUSTRY ASSN DUES/MEMBERSHIPS	14		3/06/2006	OTHER	YE JRNL	USD	.00	.00
14	ADJ TOTALS						.00		4,508.35*
	ENDING BALANCE						.00	.00E	
001-02-930-20-30-05	INDUSTRY ASSN DUES/MEMBERSHIPS USD								
	BEGINNING BALANCE						.00	.00B	
18985	P INDUSTRY ASSN DUES/MEMBERSHIPS	14		2/02/2006	OTHER	YE JRN	USD	.00	.00
19051	P INDUSTRY ASSN DUES/MEMBERSHIPS	14		2/08/2006	OTHER	YR JRNL 2	USD	.00	.00
19058	P INDUSTRY ASSN DUES/MEMBERSHIPS	14		2/09/2006	OTHER	YE JRNL 3	USD	.00	.00
19169	P INDUSTRY ASSN DUES/MEMBERSHIPS	14		3/06/2006	OTHER	YE JRNL	USD	.00	.00
14	ADJ TOTALS						.00	.00*	
	ENDING BALANCE						.00	.00E	
001-02-930-20-30-07	INDUSTRY ASSN DUES/MEMBERSHIPS USD								
	BEGINNING BALANCE						.00	.00B	

COMPANY 001

MIDWEST ENERGY, INC.

COM-BU-FER-SU-SU-CC  
 SELECTED ACCOUNT NO 001-02-930-20-30-\*\*-\*\*

\* P=POSTED U=UNPOSTED

COM-BU-FER-SU-SU-CC	JRNL NO*	DESCRIPTION	PRD	DATE	SOURCE	REFERENCE	PROJECT	CURRENCY	DEBIT AMOUNT	CREDIT AMOUNT	
RESOURCE	WORKORDER	LOCATION	TASK				hours				
17248	P	LAFIN CHAMBER OF COMMERCE	14363	01	1/14/2005	A/P		USD	100.00	.00	
01	JAN TOTALS									.00	100.00*
17449	F	PHILLIPSBURG CHMBR OF CO	10412	02	2/25/2005	A/P		USD	175.00	.00	
02	FEB TOTALS									.00	175.00*
17759	P	CHAMBER OF COMMERCE	10425	04	4/22/2005	A/P		USD	150.00	.00	
17759	F	BEEFIESTA	10206	04	4/22/2005	A/P		USD	100.00	.00	
04	APR TOTALS									.00	250.00*
17919	P	SOROPTIMIST INTERNATIONA	13699	05	5/27/2005	A/P		USD	32.40	.00	
05	MAY TOTALS									.00	32.40*
18520	P	CHAMBER OF COMMERCE	10420	10	10/14/2005	A/P		USD	90.00	.00	
10	OCT TOTALS									.00	90.00*
18638	P	WKREDA - GARDEN CITY	12877	11	11/15/2005	A/P		USD	408.00	.00	
18645	P	CHAMBER OF COMMERCE	10416	11	11/18/2005	A/P		USD	45.00	.00	
11	NOV TOTALS									.00	453.00*
18687	P	CHAMBER OF COMMERCE	10428	12	12/05/2005	A/P		USD	125.00	.00	
18784	P	KANSAS INDEPENDENT OIL &	11466	12	12/29/2005	A/P		USD	12.25	.00	
18784	P	OAKLEY CHAMBER OF COMMER	10418	12	12/29/2005	A/P		USD	387.25	.00	
18784	F	HAYS AREA CHAMBER OF COM	10413	12	12/29/2005	A/P		USD	276.00	.00	
12	DEC TOTALS									.00	800.50*
18985	P	INDUSTRY ASSN DUES/MEMBERSHIPS	14	2/02/2006	OTHER	YE JRN		USD	.00	1,900.90	
19051	F	INDUSTRY ASSN DUES/MEMBERSHIPS	14	2/08/2006	OTHER	YR JRNL 2		USD	.00	.00	
19058	F	INDUSTRY ASSN DUES/MEMBERSHIPS	14	2/09/2006	OTHER	YE JRNL 3		USD	.00	.00	
19169	P	INDUSTRY ASSN DUES/MEMBERSHIPS	14	3/06/2006	OTHER	YE JRNL		USD	.00	.00	
14	ADJ TOTALS									.00	1,900.90*
ENDING BALANCE								.00	.00E		
001-02-930-20-30-08 INDUSTRY ASSN DUES/MEMBERSHIPS USD											
BEGINNING BALANCE								.00	.00B		
17919	P	SOROPTIMIST INTERNATIONA	13699	05	5/27/2005	A/P		USD	64.80	.00	
05	MAY TOTALS									.00	64.80*
18141	P	SOCIETY FOR HUMAN	12455	07	7/11/2005	A/P		USD	76.80	.00	
07	JUL TOTALS									.00	76.80*
18395	P	COMMERCE BANK	12747	09	9/09/2005	A/P		USD	24.00	.00	
18395	P	COMMERCE BANK	12747	09	9/09/2005	A/P		USD	117.60	.00	
09	SEP TOTALS									.00	141.60*
18985	F	INDUSTRY ASSN DUES/MEMBERSHIPS	14	2/02/2006	OTHER	YE JRN		USD	.00	283.20	

COMPANY 001

MIDWEST ENERGY, INC.

COM-BU-FER-SU-SU-CC

SELECTED ACCOUNT NO 001-02-930-20-30-\*\*-\*\*

\* D=POSTED U=UNPOSTED

COM-BU-FER-SU-SU-CC

JRNL NO*	DESCRIPTION	PRD	DATE	SOURCE	REFERENCE	PROJECT	CURRENCY	DEBIT AMOUNT	CREDIT AMOUNT
RESOURCE	WORKORDER	LOCATION	TASK			hours			

9051	P	INDUSTRY ASSN DUES/MEMBERSHIPS	14	2/08/2006	OTHER	YR JRNL 2	USD	.00	.00
9058	P	INDUSTRY ASSN DUES/MEMBERSHIPS	14	2/09/2006	OTHER	YE JRNL 3	USD	.00	.00
9169	P	INDUSTRY ASSN DUES/MEMBERSHIPS	14	3/06/2006	OTHER	YE JRNL	USD	.00	.00
14	ADJ	TOTALS					USD	.00	283.20*

ENDING BALANCE .00 .00E

001-02-930-20-30-21 INDUSTRY ASSN DUES/MEMBERSHIPS USD

BEGINNING BALANCE							USD	.00B	
07768	P	OPTIMIST CLUB OF HAYS	12002	04	4/28/2005	A/P	APINVOICE	70.00	.00
04	APR	TOTALS					USD	70.00*	

8985	P	INDUSTRY ASSN DUES/MEMBERSHIPS	14	2/02/2006	OTHER	YE JRN	USD	.00	70.00
9051	P	INDUSTRY ASSN DUES/MEMBERSHIPS	14	2/08/2006	OTHER	YR JRNL 2	USD	.00	.00
9058	P	INDUSTRY ASSN DUES/MEMBERSHIPS	14	2/09/2006	OTHER	YE JRNL 3	USD	.00	.00
9169	P	INDUSTRY ASSN DUES/MEMBERSHIPS	14	3/06/2006	OTHER	YE JRNL	USD	.00	.00
14	ADJ	TOTALS					USD	.00	70.00*

ENDING BALANCE .00 .00E

001-02-930-20-30-25 INDUSTRY ASSN DUES/MEMBERSHIPS USD

BEGINNING BALANCE							USD	.00B	
07521	P	PLAINVILLE CHAMBER OF CO	14912	03	3/04/2005	A/P	APINVOICE	35.00	.00
03	MAR	TOTALS					USD	35.00*	

8985	P	INDUSTRY ASSN DUES/MEMBERSHIPS	14	2/02/2006	OTHER	YE JRN	USD	.00	35.00
9051	P	INDUSTRY ASSN DUES/MEMBERSHIPS	14	2/08/2006	OTHER	YR JRNL 2	USD	.00	.00
9058	P	INDUSTRY ASSN DUES/MEMBERSHIPS	14	2/09/2006	OTHER	YE JRNL 3	USD	.00	.00
9169	P	INDUSTRY ASSN DUES/MEMBERSHIPS	14	3/06/2006	OTHER	YE JRNL	USD	.00	.00
14	ADJ	TOTALS					USD	.00	35.00*

ENDING BALANCE .00 .00E

SUBACCOUNT TOTALS .00 .00

SUBACCOUNT TOTALS .00 .00

FERC TOTALS .00 .00

BUSINESS TOTALS .00 .00

COMPANY TOTALS .00 .00

REPORT TOTALS .00 .00

\*\*\*\*\* END OF REPORT \*\*\*\*\*

**Kansas Corporation Commission**  
Information Request

Docket No. 06-MDWG-1027-RTS

MIDWEST ENERGY, INC.

Request No: 59

Request Date: March 24, 2006

Due Date: April 14, 2006

RE: FAS 87

**Please Provide the Following:**

Please provide a copy of the actuarial study for the Applicant's pension plan for each of the last four years.

Submitted By: George Rohrer

Submitted To: Insert your name.

The defined benefit plan and defined contribution plan are multiple-employer plans. National Rural Electric Cooperative Association, Inc., Arlington, VA is the plan sponsor for both plans. There is no separate actuarial report for Midwest Energy, Inc.

If for some reason, the above information cannot be provided by the date requested, please provide a written explanation.

**Verification of Response**

I have read the foregoing Information Request and answer(s) thereto and find the answer(s) to be true, accurate, full and complete, and it contains no material misrepresentations or omissions to the best of my knowledge and belief; and I will disclose to the Commission Staff any matter subsequently discovered which affects the accuracy or completeness of the answer(s) to this Information Request.

Signed: \_\_\_\_\_

*Danda K. ...*

Date: \_\_\_\_\_

*4/6/06*

**Kansas Corporation Commission**  
Information Request

Request No: 75

Company Name           MIDWEST ENERGY, INC.

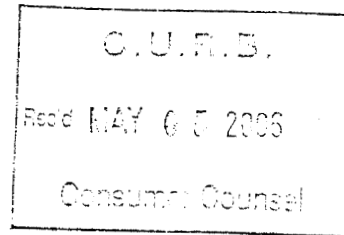
MDWG

Docket Number        06-MDWG-1027-RTS

Request Date           April 25, 2006

Date Information Needed   May 5, 2006

RE: DR No. 46 - Dues



**Please Provide the Following:**

1. Please explain the nature of the payments to Commerce Bank.
2. Staff notes that Midwest Energy records payments to the Chamber of Commerce below the line (account 426) in Staff Data Request No. 40 and above the line (account 930) in Staff Data Request No. 46. Two of the payments in Data Request No. 46 to the Chamber of Commerce are:  
    Journal #17449 on February 25, 2005 \$ 240  
    Journal #18687 on December 5, 2005 \$1,152  
  
Please explain the difference in the two payments mentioned above that warrant being recorded in account 930 compared to the payment to the Chamber of Commerce in Journal #17293 on January 28, 2005 for \$2,400 in account 426 in Staff Data Request No. 40.

Submitted By   Bill Baldry

Submitted To   Tom Meis

The two former payments were for sponsorships with the Chamber of Commerce. The latter payment was for annual membership dues to the Chamber of Commerce which probably should have been coded to account 930. See attached for copies of invoices.

If for some reason, the above information cannot be provided by the date requested, please provide a written explanation of those reasons.

**Verification of Response**

I have read the foregoing Information Request and answer(s) thereto and find answer(s) to be true, accurate, full and complete and contain no material misrepresentations or omissions to the best of my knowledge and belief; and I will disclose to the Commission Staff any matter subsequently discovered which affects the accuracy or completeness of the answer(s) to this Information Request.

Signed:           Thomas S. Meis          

Date:           5/2/06

Please complete the form below or you may register on-line at [www.kansaschamber.org](http://www.kansaschamber.org)

SPONSORSHIP REGISTRATION

Chamber Dinner 2006

THE KANSAS CHAMBER

Tuesday, February 7, 2006

Kansas Expocentre

Topeka

YES, I/we wish to be a sponsor of the 2006 Kansas Chamber Dinner honoring State Officials and Members of the Kansas Legislature. Please list our name as it appears below.

Option One: Sponsorships Available (Sponsorships will receive priority on placement of their tables)

       Platinum Sponsor \$7,500 (limited to 12)

Your company will receive two reserved tables of 10 at a premium location, will be provided exhibit space at our Kansas Business Exhibition, and will be highlighted in our event's publications and promotions.

       Gold Sponsor \$3,500

Your company will receive a reserved table of 10 (and the option to purchase a 2<sup>nd</sup> table of 10 for an additional \$500), and will be highlighted in our event's publications and promotions.

Option Two: Corporate/Reserved Tables (Table placement assigned on receipt of form)

We do not wish to be a sponsor, but please reserve 2 table(s) of 10 for the event.  
(\$1,200/per table)

1248.00  
11,950.00  
2.  
1157.00

Company/Sponsor Name MIDWEST ENERGY, INC.

Authorized by LARRY BIEG Title V.P. CORPORATE RELATION

Mailing Address P.O. Box 898 City HAYS State KS Zip 67601

Telephone 785.625.1410 Fax 785.625.1494

I have enclosed my check for: \$ 2,400 Make check payable to The Kansas Chamber.

If using a credit card you may fax table form to: (785) 357-4732. Please charge my credit card. \$ \_\_\_\_\_

Credit Card # \_\_\_\_\_ AE \_\_\_\_\_ MC \_\_\_\_\_ VISA \_\_\_\_\_ Exp. Date \_\_\_\_\_

Cardholder Signature LB 1/20/06

Return by Dec. 15:

The Kansas Chamber  
835 SW Topeka Blvd., Topeka KS 66612-1671  
Phone: (785) 357-6321 Fax (785) 357-4732

February 7, 2005



**THE KANSAS  
CHAMBER**

The Force for Business

835 SW Topeka Blvd.

Topeka, KS 66612-1671

785-357-6321

Fax: 785-357-4732

ail: info@kansaschamber.org

www.kansaschamber.org

Larry Berg  
Vice President Corporate Relations  
Midwest Energy, Inc.  
PO Box 898  
Hays, KS 67601-0898

Dear Larry:

I want you to join me in "Painting the Statehouse Green" on March 17<sup>th</sup>. That evening, the Kansas Chamber will host a St. Patrick's Day celebration in the Emerald Room of the Capitol Plaza Hotel. That night, lobbyists, Senators and Representatives, Republicans and Democrats will set aside any differences they have to be Irish for an evening of fun.

I wanted you to have the opportunity to be a sponsor of this special evening of camaraderie for people involved in the Kansas legislative process. Please consider being a sponsor for this special "Paint the Statehouse Green" party.

\$1500 – Pot of Gold Sponsor


or

\$500 - Four Leaf Clover Sponsor

Good food, great fellowship and green beer will be in abundance in this first ever Kansas Chamber event. I very much want you to be a part of it too. Included is information on how you can be a sponsor of our celebration.

Thanks in advance for your support of the event and I will see you at the Capitol Plaza on St. Patrick's Day.

Sincerely,

  
S. Lewis Ebert  
President & CEO

Encis.

*Handwritten notes:*  
7600.00  
7500.00  
1-1-950-70.50.09  
2.

*Handwritten initials and date:*  
LB 2/19



**KANSAS**

835 SW Topeka Blvd.  
Topeka, KS 66612-1671  
785- 357-6321 Fax 785-357-4732  
E-mail: info@kansaschamber.org  
www.kansaschamber.org

The Force for Business

# Reminder Notice

Annual Membership  
February 01, 2005 - January 31, 2006

Membership Dues ..... \$5,000.00  
ID # 10265

to: Earne Lehman  
President & General Manager  
Midwest Energy, Inc.  
PO Box 898  
Hays, KS 67601-0898

*Larry*

*Due to the 1993 Omnibus Reconciliation Act passed by Congress, 25% of your Kansas Chamber membership dues is not deductible since it will be used for lobbying activities. The remaining 75% may be deducted as a business expense but not as a charitable contribution.*

*For Federal Income Tax purposes, membership dues and contributions to The Kansas Chamber are deductible as business expenses, not as charitable contributions. Services provided by The Kansas Chamber are financed solely by voluntary membership.*

*2600.00*  
*LB 1/1. 426.10.00*  
*1/27. BUDGETED*  
*ITEM*  
*2400.00*

**DATE RECEIVED  
Midwest Energy**

1-24-05

For Federal Income Tax purposes, membership dues and contributions to the Kansas Chamber of Commerce and Industry are deductible as business expenses, not as charitable contributions. Services provided by the Kansas Chamber of Commerce and Industry are financed solely by voluntary membership.



**Kansas Corporation Commission**  
Information Request

Request No: 79

Company Name            MIDWEST ENERGY, INC.

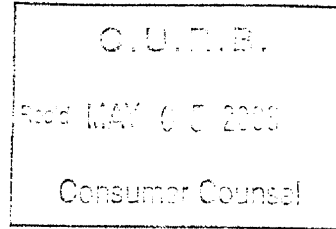
MDWG

Docket Number        06-MDWG-1027-RTS

Request Date            April 25, 2006

Date Information Needed    May 5, 2006

RE: DR No. 59 - Pension Plan



**Please Provide the Following:**

1. Please provide a copy of National Rural Electric Cooperative Association's (NRECA) pension plan document. The Plan Document is attached.
2. Are union employees covered by the NRECA's pension plan? Yes
3. Please provide the formula used by the NRECA pension plan to determine an employee's retirement benefits. Age 65 Plan – 2% of final average effective salary multiplied by the years of benefit service
4. Please provide the Company's total pension cost for the Test Year. \$1,510,197
5. Please provide the percentage of pension cost that was capitalized in the Test Year. This information is not readily available. The spread is based on labor charged to the accounts.
6. Please provide the dollar amount and general ledger accounts of pension expense for the Test Year. \$1,510,197 The spread is based on labor charged to the accounts.

Submitted By Bill Baldry

Submitted To Pat Parke

If for some reason, the above information cannot be provided by the date requested, please provide a written explanation of those reasons.

**Verification of Response**

I have read the foregoing Information Request and answer(s) thereto and find answer(s) to be true, accurate, full and complete and contain no material misrepresentations or omissions to the best of my knowledge and belief; and I will disclose to the Commission Staff any matter subsequently discovered which affects the accuracy or completeness of the answer(s) to this Information Request.

Signed:           Diana Kubo          

Date:           5/4/06



**Kansas Corporation Commission  
Information Request**

Request No: 83

Company Name            MIDWEST ENERGY, INC.

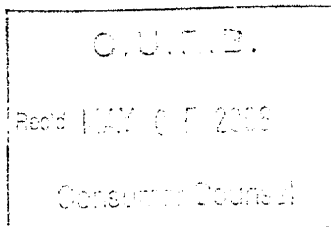
MDWG

Docket Number        06-MDWG-1027-RTS

Request Date            April 25, 2006

Date Information Needed    May 5, 2006

RE: Payroll



**Please Provide the Following:**

Section 9, Schedule 6, Page 2 of the Application, contains Adjustment Number 17 - Payroll.

1. Please provide the workpapers supporting the 3.5% annual payroll increase.

Submitted By    Bill Baldry

Submitted To    Tom Meis

The actual payroll increase that went into effect in March 2006 was 3.74% (see attached).

For 2007, our union contract has a 3.5% increase (see DR #39) and we are budgeting an overall 4% increase for total company payroll.

If for some reason, the above information cannot be provided by the date requested, please provide a written explanation of those reasons.

**Verification of Response**

I have read the foregoing Information Request and answer(s) thereto and find answer(s) to be true, accurate, full and complete and contain no material misrepresentations or omissions to the best of my knowledge and belief; and I will disclose to the Commission Staff any matter subsequently discovered which affects the accuracy or completeness of the answer(s) to this Information Request.

Signed:           Tom S. Meis          

Date:           5/2/06

Summary of 2006 Wage Increases for Full-time Employees

CWA Union – 59 Employees

	<u>Before 1/1/06</u>	<u>After 1/1/06</u>	<u>Difference</u>	<u>% Increase</u>
Hourly Total	\$1,220.67	\$1,262.58	\$41.91	3.43%
Annual Total	\$2,538,993.60	\$2,626,166.40	\$ 87,172.80	3.43%

IBEW Union – 104 Employees

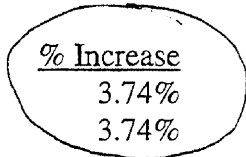
	<u>Before 1/1/06</u>	<u>After 1/1/06</u>	<u>Difference</u>	<u>% Increase</u>
Hourly Total	\$2,287.73	\$2,374.98	\$ 87.25	3.81%
Annual Total	\$4,758,478.40	\$4,939,958.40	\$181,480.00	3.81%

Non-Union – 98 Employees (includes bonuses)

	<u>Before 2/26/06</u>	<u>After 2/26/06</u>	<u>Difference</u>	<u>% Increase</u>
Hourly Total	\$2,403.04	\$2,495.23	\$92.19	3.84%
Annual Total	\$4,998,323.20	\$5,190,078.40	\$191,755.20	3.84%

Total Company – 261 Employees (includes bonuses)

	<u>Before 2/26/06</u>	<u>After 2/26/06</u>	<u>Difference</u>	<u>% Increase</u>
Hourly Total	\$5,911.44	\$6,132.79	\$221.35	3.74%
Annual Total	\$12,295,795.20	\$12,756,203.20	\$460,408.00	3.74%



**Kansas Corporation Commission**  
Information Request

Request No: 91

Company Name           MIDWEST ENERGY, INC.

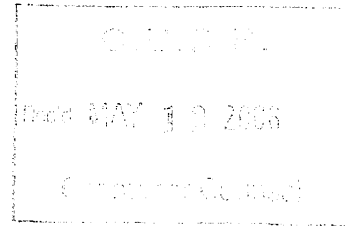
MDWG

Docket Number        06-MDWG-1027-RTS

Request Date           April 28, 2006

Date Information Needed   May 10, 2006

RE: Construction Work in Progress



**Please Provide the Following:**

Section 4, Schedule 1, line 11 lists Construction Work in Progress for \$306,460.

1. Please provide a reconciliation of the work orders that comprise CWIP at the end of the Test Year.
2. Please indicate the status of each work order whether it is Open or Closed.
3. If a work order is closed, please provide the date the Work Order was closed.

Submitted By Bill Baldry

Submitted To Tom Meis

See attached.

If for some reason, the above information cannot be provided by the date requested, please provide a written explanation of those reasons.

**Verification of Response**

I have read the foregoing Information Request and answer(s) thereto and find answer(s) to be true, accurate, full and complete and contain no material misrepresentations or omissions to the best of my knowledge and belief; and I will disclose to the Commission Staff any matter subsequently discovered which affects the accuracy or completeness of the answer(s) to this Information Request.

Signed: Thomas J. Meis

Date: 5/10/06

Midwest Energy, Inc.  
Construction Work in Progress

Attachment to DR No. 91

Work Order #	Amount	Status	Date Closed
04-00182	1,275.26	Open	
04-01234	650.76	Closed	3/31/2006
04-01866	1,045.49	Closed	3/31/2006
05-00004	1,554.50	Closed	1/31/2006
05-00169	6.00	Open	
05-00205	357.26	Open	
05-00207	300.00	Closed	3/31/2006
05-00275	1,497.67	Closed	2/28/2006
05-00318	623.37	Closed	3/31/2006
05-00319	978.97	Closed	2/28/2006
05-00735	728.58	Closed	3/31/2006
05-00737	2,373.73	Closed	3/31/2006
05-00756	7,831.39	Closed	1/31/2006
05-00789	6,415.84	Closed	2/28/2006
05-00808	1,350.62	Closed	2/28/2006
05-00884	149.29	Open	
05-00975	113.71	Closed	2/28/2006
05-00986	426.45	Open	
05-00991	728.40	Closed	3/31/2006
05-01007	971.53	Closed	2/28/2006
05-01133	2,485.49	Open	
05-01302	105,691.17	Open	
05-01382	29.13	Open	
05-01396	135.81	Open	
05-01399	29,846.02	Open	
05-01416	386.36	Open	
05-01437	1,425.63	Open	
05-01442	8,824.79	Closed	2/28/2006
05-01510	385.23	Open	
05-01512	6,471.08	Closed	1/31/2006
05-01513	309.12	Open	
05-01518	6,777.58	Closed	1/31/2006
05-01548	7,549.93	Closed	1/31/2006
05-01552	22,446.85	Closed	1/31/2006
05-01572	(304.40)	Closed	2/28/2006
05-01610	7,227.14	Closed	2/28/2006
05-01634	254.19	Closed	2/28/2006
05-01656	42.95	Open	
05-01658	43.99	Open	
05-01661	1,682.40	Closed	3/31/2006
05-01678	2,537.09	Open	
05-01697	1,539.30	Closed	2/28/2006
05-01698	978.90	Closed	2/28/2006
05-01702	1,475.90	Closed	2/28/2006
05-01703	4,193.01	Open	
05-01733	294.57	Open	
05-01745	15.70	Closed	1/31/2006
05-01747	750.92	Closed	1/31/2006
05-01750	245.72	Closed	1/31/2006
05-01759	406.87	Closed	2/28/2006
05-01766	1,008.88	Closed	2/28/2006
05-01767	1,088.62	Closed	2/28/2006
05-01773	3,799.69	Closed	1/31/2006
05-01788	1,082.88	Closed	2/2/2006
05-01799	1,083.69	Closed	2/28/2006
05-01802	238.69	Open	
05-01824	6,386.99	Open	
05-01836	3,401.77	Closed	1/31/2006
05-01841	741.72	Closed	2/28/2006
05-01844	1,620.12	Closed	1/31/2006
05-01845	2,453.57	Closed	1/31/2006
05-01846	1,056.33	Closed	1/31/2006
05-01847	278.59	Closed	2/28/2006
05-01849	335.67	Closed	2/28/2006
05-01853	2,850.84	Closed	1/31/2006
05-01856	2,404.88	Closed	3/31/2006
05-01859	2,431.90	Closed	1/31/2006
05-01860	828.70	Closed	2/28/2006
05-01861	550.87	Closed	2/28/2006
05-01867	1,315.92	Closed	1/31/2006
05-01870	1,647.80	Closed	1/31/2006
05-01871	1,346.94	Closed	1/31/2006
05-01873	484.75	Closed	1/31/2006
05-01877	285.80	Open	
05-01879	577.46	Open	
05-01884	90.08	Open	
05-01886	229.33	Open	
05-01887	28.81	Open	
05-01889	263.12	Open	
05-01892	1,474.40	Closed	1/31/2006
05-01897	2,321.83	Closed	1/31/2006
05-01900	4,953.79	Open	
05-01903	1,496.65	Closed	1/31/2006
05-01906	1,361.39	Closed	1/31/2006
05-01910	449.05	Closed	2/28/2006
05-01922	276.78	Closed	1/31/2006
05-01925	1,035.76	Closed	1/31/2006
05-01928	1,469.65	Open	
05-01933	497.47	Closed	2/28/2006

Overheads to be applied to w/o's 6,670.58

**Kansas Corporation Commission  
Information Request**

Request No: 120

Company Name           MIDWEST ENERGY, INC.

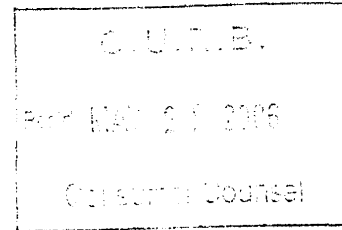
MDWG

Docket Number        06-MDWG-1027-RTS

Request Date           May 15, 2006

Date Information Needed   May 25, 2006

RE: City of Bunker Hill



**Please Provide the Following:**

1. Please explain the Company's business relationship with the City of Bunker Hill.
2. How is Bunker Hill different from the other cities Midwest Energy serves?

Submitted By   Bill Baldry

Submitted To   Pat Parke

Bunker Hill is a small municipally owned gas utility. Midwest Energy serves Bunker Hill via the former Producers Gas system in Russell County. The town has about 100 gas services, but only 55-60 are usually active accounts. In addition to gas sales to the municipal utility, Midwest Energy performs other services for Bunker Hill such as billing, line locates, odorant tests, and regulator tests.

On April 11 the Bunker Hill City Council approved a motion to pursue sale of its gas system to Midwest Energy for \$50,000. Midwest Energy's Board of Directors approved an asset purchase agreement on May 15.

If for some reason, the above information cannot be provided by the date requested, please provide a written explanation of those reasons.

**Verification of Response**

I have read the foregoing Information Request and answer(s) thereto and find answer(s) to be true, accurate, full and complete and contain no material misrepresentations or omissions to the best of my knowledge and belief; and I will disclose to the Commission Staff any matter subsequently discovered which affects the accuracy or completeness of the answer(s) to this Information Request.

Signed: Pat Parke

Date: 5-19-06

**Kansas Corporation Commission  
Information Request**

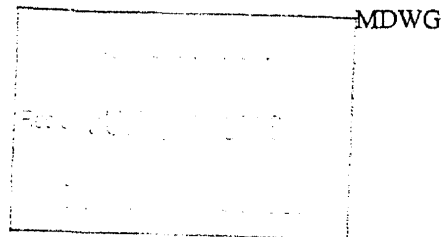
Request No: 133

Company Name           MIDWEST ENERGY, INC.

Docket Number        06-MDWG-1027-RTS

Request Date           June 14, 2006

Date Information Needed   June 26, 2006



RE: Reply to Onsite Audit Questions on Pension and Medical Expense

**Please Provide the Following:**

1. Please update the medical expense for 2006 to the most recent date available. The attachment includes updates and a correction to the previous reply to Onsite Audit Questions.
2. In the response to Onsite Audit Questions for medical expense, are the amounts shown actual claims paid on a weekly basis? Yes
3. Is the amount recorded in the general ledger as medical expense for a calendar month the sum of claims paid during that calendar month less employee medical premium payments? The amount recorded includes billed charges, claims paid, and claim processing expenses less participant contributions.
4. Does the Company at any time during the year (especially at year end) accrue medical expense? Yes
5. If yes, please explain the purpose of the accrual and what the accrual is based on. Accrual at year end is based on the average of the claims paid for the year multiplied by 1½ to assume a 45 day lag for payment of claims.
6. Is the amount of pension expense recorded year to date for 2006 equal to the amount paid to the National Rural Electric Cooperative Association's pension plan? No. Pension expense includes prior service cost.
7. In the response to the Onsite Audit Questions for pension expense, are the amounts shown for pension expense for 2006 actual or projected expenses? The expenses for January through May are actual amounts. The expenses for June through December are estimated amounts.

Submitted By Bill Baldry

Submitted To Wanda Kuhn

If for some reason, the above information cannot be provided by the date requested, please provide a written explanation of those reasons.

**Verification of Response**

I have read the foregoing Information Request and answer(s) thereto and find answer(s) to be true, accurate, full and complete and contain no material misrepresentations or omissions to the best of my knowledge and belief; and I will disclose to the Commission Staff any matter subsequently discovered which affects the accuracy or completeness of the answer(s) to this Information Request.

Signed: Wanda Kuhn

Date: 6/23/06



MEDICAL CLAIMS	2003	2004	2005	2006
	-52,536.42			
	-78,566.57	-42,566.75	-72,478.23	-39,854.28
	-38,577.60	-48,497.72	-58,711.64	-38,897.90
	-59,446.94	-42,298.61	-58,495.73	-50,182.03
	-31,412.38	-42,913.02	-69,580.63	-38,533.88
JAN	-260,539.91	-176,276.10	-259,266.23	-167,468.09
	-16,583.12	-21,763.49	-25,549.49	-35,668.57
	-60,478.34	-47,856.70	-64,856.24	-20,669.29
	-23,158.65	-57,868.58	-24,724.22	-66,180.03
	-27,894.65	-32,774.53	-28,016.28	-58,618.55
FEB	-128,114.76	-160,263.30	-143,146.23	-181,136.44
	-20,574.54	-26,838.45	-27,775.12	-32,810.66
	-22,488.57	-40,010.95	-90,919.88	-32,604.03
	-31,596.99	-33,733.61	-33,485.39	-32,484.56
	-46,666.75	-82,038.16	-50,973.84	-45,024.27
	-20,735.99	-21,401.65	-35,465.79	-29,504.87
MAR	-142,062.84	-204,022.82	-238,620.02	-172,428.39
	-21,806.39	-18,174.54	-57,029.62	-29,945.91
	-20,120.00	-31,875.34	-49,719.03	-46,340.15
	-22,752.66	-25,708.46	-25,721.74	-42,259.99
	-26,383.34	-28,718.16	-37,880.16	-33,651.49
APRIL	-91,062.39	-104,476.50	-170,350.55	-152,197.54
	-27,572.44	-32,370.24	-36,208.36	-41,297.64
	-42,135.02	-28,820.02	-32,322.18	-31,130.42
	-37,338.97	-31,157.31	-39,818.93	-25,119.16
	-29,485.26	-24,145.47	-43,069.38	-20,742.49
MAY	-136,531.69	-116,493.04	-151,418.85	-118,289.71
	-28,259.23	-24,875.85	-59,707.63	-57,093.17
	-21,215.34	-24,071.53	-58,346.39	-44,275.01
	-20,338.90	-31,565.57	-22,690.03	-91,316.14
	-49,286.42	-43,134.29	-51,134.37	
		-71,739.51	-68,878.91	
JUNE	-119,099.89	-195,386.75	-260,757.33	-192,684.32
	-25,929.07	-17,978.55	-56,116.13	
	-25,675.19	-68,952.11	-33,398.11	
	-37,575.56	-17,446.51	-44,953.78	
	-55,219.23	-35,705.72	-29,513.81	
	-28,910.47			
JULY	-173,309.52	-140,082.89	-163,981.83	0.00
	-36,231.17	-28,617.60	-57,506.67	
	-46,401.26	-39,229.44	-16,931.40	
	-23,775.74	-77,845.70	-73,034.41	
	-34,275.92	-34,749.68	-28,452.15	
			-66,285.88	
AUGUST	-140,684.09	-180,442.42	-242,210.51	0.00
	-30,783.41	-54,816.64	-50,688.34	
	-21,590.83	-22,893.22	-26,760.42	
	-20,344.83	-37,357.31	-87,711.75	
	-35,298.37	-20,602.35	-24,185.27	
		-34,339.32		
SEPT	-108,017.44	-170,008.84	-189,345.78	0.00

	2003	2004	2005	2006
MEDICAL CLAIMS				
	-77,005.56	-31,079.48	-53,764.90	
	-48,540.26	-24,036.84	-32,499.54	
	-27,691.78	-38,415.13	-39,468.07	
	-49,746.95	-38,797.59	-68,088.14	
	-43,611.25			
OCT	-246,595.80	-132,329.04	-193,820.65	0.00
	-44,572.87	-38,036.20	-34,547.32	
	-30,982.24	-28,126.76	-27,728.49	
	-54,456.42	-58,970.70	-44,963.66	
	-64,594.31	-85,979.14	-47,950.05	
NOV	-194,605.84	-211,112.80	-155,189.52	0.00
	-63,469.13	-29,546.84	-27,789.56	
	-44,694.75	-46,686.61	-96,029.81	
	-42,066.06	-41,611.45	-67,742.88	
	-57,359.30	-42,676.33	-23,988.80	
	-34,540.59	-34,214.88	-47,457.96	
DEC	-242,129.83	-194,736.11	-263,009.01	0.00
TOTAL	-1,982,754.00	-1,985,630.61	-2,431,116.51	-984,204.49
MO AVERAGE	-165,229.50	-165,469.22	-202,593.04	-171,166.00
BCBS EXPECTED CLAIMS			2,214,116.52	2,335,696.80
BILLED CHARGES			259,254.72	239,062.32
CLAIMS PROCESSING CHARGE			93,435.72	102,303.52
EXPECTED ANNUALIZED LIABILITY AT 100%			2,566,806.96	2,677,062.64
LESS EMPLOYEE CONTRIBUTIONS (based on 6 mo average FOR 06)			-325,971.25	-423,241.14
TOTAL COMPANY LIABILITY			2,240,835.71	2,253,821.50
ACTUAL 2005 (BASED ON 5.75 MO AVERAGE FOR 06)			2,431,116.51	2,053,991.98
BILLED CHARGES (BASED ON 6 MO AVERAGE FOR 06)			256,746.99	234,419.00
CLAIMS PROCESSING CHARGE (BASED ON 5.75 MO AVERAGE FOR 06)			102,681.47	89,290.43
EXPECTED ANNUALIZED LIABILITY AT 100%			2,790,544.97	2,377,701.41
LESS EMPLOYEE CONTRIBUTIONS (BASED ON 6 MO AVERAGE FOR 06)			-325,971.25	-423,241.14
TOTAL COMPANY LIABILITY			2,464,573.72	1,954,460.27
2005 claims exceeded the BC/BS expected claims by approximately 10%. The claims so far for 2006 have been lower than expected.				
For the current workforce, we support BC/BS's expected claims amount. We are also adding an estimate for new hires.				
TOTAL COMPANY LIABILITY (based on BC/BS expected claims)				2,253,821.50
New Hires				25,515.30
TOTAL PROJECTED FOR 2006				2,279,336.80
2005 AMOUNT (Section 9, Schedule 8)				2,441,895.00
DECREASE				-162,558.20

**Kansas Corporation Commission**  
**Information Request**

Request No: 137

Company Name           MIDWEST ENERGY, INC.

MDWG

Docket Number        06-MDWG-1027-RTS

Request Date           June 14, 2006

Date Information Needed   June 26, 2006

RE: H2S Costs

**Please Provide the Following:**

Please provide a schedule of all H2S costs (regulatory, legal, field, O&M, etc.) incurred during the test year. Please group costs by FERC account number and vendor or cost center.

Submitted By   Bill Baldry

Submitted To   Pat Parke

See attached summary of expenses and work order costs for resolving hydrogen sulfide problems.

If for some reason, the above information cannot be provided by the date requested, please provide a written explanation of those reasons.

**Verification of Response**

I have read the foregoing Information Request and answer(s) thereto and find answer(s) to be true, accurate, full and complete and contain no material misrepresentations or omissions to the best of my knowledge and belief; and I will disclose to the Commission Staff any matter subsequently discovered which affects the accuracy or completeness of the answer(s) to this Information Request.

Signed: \_\_\_\_\_

*Pat Parke*

Date: \_\_\_\_\_

*6/27/06*

**Attachment to KCC-137  
Docket No. 06-MDWG-1027-RTS**

**Amounts expensed for H2S monitoring, legal costs, temporary heat and conversion to alternate fuels**

<b>Cost Center &amp; Month</b>	<b>Payroll (OT only)</b>	<b>Payroll Overhead</b>	<b>Legal</b>	<b>Supplies</b>	<b>Customer Reimbursement</b>	<b>Tools</b>	<b>Vehicles &amp; Equip.</b>	<b>Total</b>
<b>2.186.00.00.07</b>								
Mar-05	\$231.73	\$124.66		\$356.72				\$713.11
Apr-05			\$11,552.10	\$220.20		\$1,073.26		\$12,845.56
May-05			\$8,520.11	\$995.44	\$14,663.26			\$24,178.81
Jun-05					\$17,000.30			\$17,000.30
Jul-05				\$421.86	\$17,625.27			\$18,047.13
Aug-05			\$643.50		\$32,266.59			\$32,910.09
Sep-05				\$342.77	(\$2,495.00)			(\$2,152.23)
Oct-05					\$11,851.95			\$11,851.95
Nov-05					(\$747.95)			(\$747.95)
Dec-05					\$12,398.25			\$12,398.25
<b>Subtotal</b>	<b>\$231.73</b>	<b>\$124.66</b>	<b>\$20,715.71</b>	<b>\$2,336.99</b>	<b>\$102,562.67</b>	<b>\$1,073.26</b>	<b>\$0.00</b>	<b>\$127,045.02</b>
<b>2.186.00.00.27</b>								
Mar-05	\$1,349.60	\$886.38					\$475.67	\$2,711.65
Apr-05	\$3,033.92	\$1,866.52		\$288.34	\$607.83		\$1,636.68	\$7,433.29
May-05	\$309.16	\$203.56		\$805.53			\$140.88	\$1,459.13
Jun-05	\$209.60	\$817.57		\$15.62	\$3,367.00		\$140.07	\$4,549.86
Jul-05								\$0.00
Aug-05								\$0.00
Sep-05	\$104.80	\$85.10						\$189.90
Oct-05				\$6.08				\$6.08
Nov-05	\$62.88	\$35.24		\$166.72			\$18.94	\$283.78
Dec-05								\$0.00
<b>Subtotal</b>	<b>\$5,069.96</b>	<b>\$3,894.37</b>	<b>\$0.00</b>	<b>\$1,282.29</b>	<b>\$3,974.83</b>	<b>\$0.00</b>	<b>\$2,412.24</b>	<b>\$16,633.69</b>
<b>2005 Total</b>	<b>\$5,301.69</b>	<b>\$4,019.03</b>	<b>\$20,715.71</b>	<b>\$3,619.28</b>	<b>\$106,537.50</b>	<b>\$1,073.26</b>	<b>\$2,412.24</b>	<b>\$143,678.71</b>
<b>2006 Total</b>			<b>\$2,552.00</b>					<b>\$2,552.00</b>
<b>Customer Reimbursement = Amounts paid directly to customers for conversions or to contractors on customers' behalf.</b>								
<b>Work Orders to install mains and service lines to access pipeline quality gas</b>								
<b>Work Order</b>	<b>Amount</b>							
05-00383	\$8,546.18							
05-00391	\$32,732.92							
05-00430	\$14,076.80							
05-00480	\$376.62							
05-00482	\$1,014.29							
05-00516	\$1,364.80							
<b>Total</b>	<b>\$58,111.61</b>							





THE *Heritage* COMPANY

P.O. BOX 747  
2025 SOUTH COOPER  
(817) 860-5700 FAX (817) 860-7750  
ARLINGTON, TEXAS 76004-0747

05-789

This account has been assigned to us by the dealer. Any balance due on this order is payable only to The Heritage Co. at Arlington, Tarrant County, Texas.

Make all checks payable to The Heritage Co.

REMITTANCE

INVOICE DAT

CUSTOMER NO.

747000

JOB NO.

CONCRETE ENERGY INC

1101 W. COOPER AVE

ARLINGTON TX

76004-0747

AT THE HERITAGE CO.  
1500 GARDENWAY DR  
ARLINGTON TX 76010

ORDER NO. 05-789  
DATE 1-2-93

JOB NO.

CUSTOMER

UNIT NO. CUSTOMER P.O. NO. SALESPERSON ORDER DATE INVOICE DATE DATE SHIPPED INVOICE NO.

CUST. NO.

QUAN. ORD. QUAN. SHP. QUAN. B.O. ITEM NUMBER DESCRIPTION PRICE AMOUNT SA

QUAN. ORD.	QUAN. SHP.	QUAN. B.O.	ITEM NUMBER	DESCRIPTION	PRICE	AMOUNT	SA
			100	100 ROUND 1/2" REBAR	107.07	107.07	
				100 ROUND 1/2" REBAR	107.07	107.07	
				100 ROUND 1/2" REBAR	107.07	107.07	



1-2-93 010 f  
AS 11/88 [Signature]

TERMS

1595.00 0.00 (107.07) 107.07

TOTAL











THE *Heritage* COMPANY

P.O. BOX 747  
2025 SOUTH COOPER  
(817) 860-5700 FAX (817) 860-7750  
ARLINGTON, TEXAS 76004-0747

This account has been assigned to us by the dealer. Any balance due on this order is payable only to The Heritage Co. at Arlington, Tarrant County, Texas.  
Make all checks payable to The Heritage Co.

05-7702

*JOHN*

CUSTOMER NO.

120098

JOB NO.

21207

WINDY ENERGY INC  
ATTN: ROBERT HELM  
PO BOX 899  
ARLINGTON TX 76001

MEMORANDUM FOR MR. HELM  
ATTN: ROBERT HELM  
1330 LANTERN LANE  
ARLINGTON TX 76010

UPS Ground  
FOB Factory

UNIT NO.	CUSTOMER P.O. NO.	SALESPERSON	
		2768 LINDA NEMUTH	
QUAN. ORD.	QUAN. SHP.	QUAN. B.O.	ITEM NUMBER

ORDER DATE	INVOICE DATE	DATE SHIPPED	INVOICE NO.
02/10/05	02/21/05	02/28/05	
DESCRIPTION	PRICE	AMOUNT	

FL-2020S  
SETUP

FLASHLITES BROWER PLUS  
BLACK IMP. CH. PLATE  
BATTERIES

1,850 E  
12,000 E

1850.00  
2000.00

001-01-588-20-00-31

*MS*  
OK  
MUE

We appreciate your business!

CT EL KS USE 5 \$ 145.29

TERMS

1/10, 30

1880.00

0.00

180.95

0.00

2060.95

SUB-TOTAL

INS.

FREIGHT/HANDLING

SALES TAX

TOTAL



REMITTANCE COPY

This account has been assigned to us by the dealer. Any balance due on this order is payable only to The Heritage Co. at Arlington, Tarrant County, Texas.  
 Make all checks payable to The Heritage Co.



THE *Heritage* COMPANY  
 P.O. BOX 747  
 2025 SOUTH COOPER  
 (817) 860-5700 FAX (817) 860-7750  
 ARLINGTON, TEXAS 76004-0747

INVOICE DATE

CUSTOMER NO.

100000

PLUGGEST ENERGY INC  
 AT THE SUPPLY HELM  
 20100Y 050  
 HAYS KS 67601

JOB NO.

100000

USG Ground  
 JOB Factory

CUSTOMER

INVOICE NO.

07/27/05 03/27/05 05/27/05

SALESPERSON

2020 LITHIA RIVOLITY

CUSTOMER P.O. NO.

UNIT NO.

100000

ITEM NUMBER

QUAN. SHP.

QUAN. B.O.

QUAN. ORD.

AMOUNT

PRICE

DESCRIPTION

DATE SHIPPED

ORDER DATE

INVOICE DATE

SALES PERSON

CUST. NO.

1.120 E  
 300.00

MINI TOOL LIFE/KEY CHAIN  
 30.000 E

TRANSPARENT BLUE NIGHT TIME

1.1. 926. 30.00.08  
 1.2. 926. 30.00.08

1.1. 926. 30.00.08  
 1.2. 926. 30.00.08

1.1. 926. 30.00.08  
 1.2. 926. 30.00.08

1.1. 926. 30.00.08  
 1.2. 926. 30.00.08

1.1. 926. 30.00.08  
 1.2. 926. 30.00.08

*Handwritten notes:*  
 1.1. 926. 30.00.08  
 1.2. 926. 30.00.08  
 D.K.D. mwh



We appreciate your business!



THE **Heritage** COMPANY  
 P.O. BOX 747  
 2025 SOUTH COOPER  
 (817) 860-5700 FAX (817) 860-7750  
 ARLINGTON, TEXAS 76004-0747

This account has been assigned to us by the dealer. Any balance due on this order is payable only to The Heritage Co. at Arlington, Tarrant County, Texas.  
 Make all checks payable to The Heritage Co.

CUSTOMER NO.

100290

HIDWEST ENERGY INC  
 ATTN: ROBERT HELM  
 4000 W. 37th St  
 ARLING, TX 76004

JOB NO.

100290

UNIT NO.

SALESPERSON

LINDA NEWJORTH

ORDER DATE

INVOICE DATE

DATE SHIPPED

INVOICE NO.

07/28/04 08/25/04 08/17/04

QUAN. ORD.

QUAN. SHP.

QUAN. B.O.

ITEM NUMBER

DESCRIPTION

PRICE

AMOUNT

199.00  
 300.00

0.120 E  
 02.000 E

EMERY BOARDS/NATURAL  
 BLUE IMP

17.147  
 135.30  
 124.89

CT  
 1. 236.50.00.01  
 926.30.00.08  
 1.1/2. DKD  
 2. DKD

We appreciate your business.

TERMS

230.00 0.00 13.07 0.00

243.07

TOTAL



THE *Heritage* COMPANY  
 P.O. BOX 747  
 2025 SOUTH COOPER  
 (817) 860-5700 FAX (817) 860-7750  
 ARLINGTON, TEXAS 76004-0747

This account has been assigned to us by the dealer. Any balance due on this order is payable only to The Heritage Co. at Arlington, Tarrant County, Texas.  
 Make all checks payable to The Heritage Co.

CUSTOMER NO.

106210

WILMEST ENERGY INC  
 ATTN: SUPPORT HELD  
 1330 LAFFERTY  
 FORT WORTH, TX 76104

JOB NO.

50 308 899

UNIT NO. CUSTOMER P.O. NO.

2726 LEMMA HOODING

SALESPERSON

ORDER DATE

INVOICE DATE

DATE SHIPPED

INVOICE NO.

QUAN. ORD.

QUAN. SHP.

QUAN. B.O.

ITEM NUMBER

DESCRIPTION

PRICE

AMOUNT

OP-101  
 SETUP

ZIPPY LETTER OPENERS  
 10K BLU CASE-1X 10.00 E  
 WHITE HIFEC

18.397  
 145.20  
 134.04

CT 1.1  
 1.1/2  
 1.2  
 236.50.00.01  
 926.30.00.08  
 JKD

We appreciate your business!

TERMS

251.18 0.00 9.67 0.00

260.85



THE *Heritage* COMPANY

P.O. BOX 747  
2025 SOUTH COOPER  
(817) 860-5700 FAX (817) 860-7750  
ARLINGTON, TEXAS 76004-0747

CUSTOMER NO.

107595

JOB NO.

WILDMIST ENERGY INC  
ATTN: ROBERT WELCH  
PO BOX 402  
DART MOUNTAIN, TEXAS

SALESPERSON

2458 LINDA HUNTER

CUSTOMER P.O. NO.

QUAN. SHIP.

ITEM NUMBER

QUAN. B.O.

P433A25

QUAN. ORD.

1000

1000

DESCRIPTION

BIG STICKY 10118 433 WHITE  
25 SHEETS VALUE TOP

PRICE

0.390 E

AMOUNT

390.00

INVOICE DATE

DATE SHIPPED

INVOICE NO.

07/28/05 08/22/05 00700000

WILDMIST ENERGY INC  
ATTN: ROBERT WELCH  
1330 CAMDEN RD  
HTS 48 57607  
QUICK PIC PLUS 2 DAY  
POB FACTORY

130.587  
111.44  
222.47  
222.47

00.00  
00.00  
30.00  
00.08

Handwritten signature and initials: "D. K. D. Hunter"

We appreciate your business!

TERMS	NET 30	INS.	0.00	FREIGHT/HANDLING	43.73	SALES TAX	0.00	TOTAL	390.00
SUB-TOTAL		390.00		43.73		0.00		437.73	

We appreciate your business



THE *Heritage* COMPANY

P.O. BOX 747  
2025 SOUTH COOPER  
(817) 860-5700 FAX (817) 860-7750  
ARLINGTON, TEXAS 76004-0747

This account has been assigned to us by the dealer. Any balance due on this order is payable only to The Heritage Co. at Arlington, Tarrant County, Texas.

Make all checks payable to The Heritage Co.

REMITTANCE COPY

CUSTOMER NO.

1002098

1002098

JOB NO.

WINDUST ENERGY INC  
ATTN: ROBERT HELM  
PO BOX 908  
HAYS KS 67601

ADDRESS: ENERGY INC  
ATTN: ROBERT HELM  
1330 CANTERBURY DR  
HAYS KS 67601

RESTDAY 2 AM 8-10

FUB Factory

INVOICE DATE

JOB NO.

CUSTOMER

UNIT NO.	CUSTOMER P.O. NO.	SALESPERSON	ORDER DATE	INVOICE DATE	DATE SHIPPED	INVOICE NO.
		2768 LINDA NOVOTNY	07/14/08	08/01/08	07/27/08	1002098

CUST. NO.

SALES PERSON

QUAN. ORD.	QUAN. SHP.	QUAN. B.O.	ITEM NUMBER	DESCRIPTION	PRICE	AMOUNT
1	1		ASST CLOS	POWR CLF M/TACHNT-BLK GRIP	11.200 E	11.20
			SETUP	250 EARTH/ULTR PURPLE TRANSPARENT ADHIT INF	18.750 E	18.75



Handwritten notes: 3/13/11, 1-2-930-10-4, and a signature.

We appreciate your business!

TERMS

1625.95	0.00	34.13	0.00	1660.08
<b>SUB-TOTAL</b>	<b>INS.</b>	<b>FREIGHT/HANDLING</b>	<b>SALES TAX</b>	<b>TOTAL</b>





This account has been assigned to us by the dealer  
 balance due on this order is payable only to The I  
 Co. at Arlington, Tarrant County, Texas.  
 Make all checks payable to The Heritage Co.

**THE Heritage COMPANY**  
 P.O. BOX 747  
 2025 SOUTH COOPER  
 (817) 860-5700 FAX (817) 860-7750  
 ARLINGTON, TEXAS 76004-0747

CUSTOMER NO. 100239  
 JOB NO. 100239

MIDWEST ENERGY INC  
 ATTN: ROBERT HELM  
 PO BOX 898  
 HAYS KS 67861

MIDWEST ENERGY INC  
 ATTN: ROBERT HELM  
 1330 CANTERBURY RD  
 HAYS KS 67861

UPS Delivery  
 FOM Factory

INVOICE NO.

ORDER DATE INVOICE DATE DATE SHIPPED

SALESPERSON

CUSTOMER P.O. NO.

2768 LINDA HUNTER

PRICE

AMOUNT

DESCRIPTION

QUAN. SHP. QUAN. B.O.

ITEM NUMBER

3,210.00  
 36,000.00

492404  
 SETUP

PENS/LED LATE BLUE/BLUE  
 SILVER IMP FOR COP  
 BLACK INK FOR COP

*Handwritten notes:*  
 09-16-97  
 2-1  
 10-11-97

We appreciate your business

TERMS	Net 30			
SUB-TOTAL	560.02	0.00	12.28	0.00
INS.				
FREIGHT/HANDLING				
SALES TAX				
<b>TOTAL</b>				

We appreciate your business



THE *Heritage* COMPANY  
 P.O. BOX 747  
 2025 SOUTH COOPER  
 (817) 860-5700 FAX (817) 860-7750  
 ARLINGTON, TEXAS 76004-0747

This account has been assigned to us by the dealer. Any balance due on this order is payable only to The Heritage Co. at Arlington, Tarrant County, Texas.  
 Make all checks payable to The Heritage Co.

MURKIN ENERGY INC  
 ATTN: ROBERT HELM  
 1530 CONFEDERACY DR  
 HOUSTON TX 77060  
 U.S. District  
 FOR Factory

CUSTOMER NO. 100250  
 22317  
 JOB NO. 424  
 SALES PERSON LINDA HOUGHTON  
 ITEM NUMBER 2765

UNIT NO. CUSTOMER P.O. NO. QUAN. SHP. QUAN. B.O. ORDER DATE INVOICE DATE DATE SHIPPED INVOICE NO.

2765 LINDA HOUGHTON 2765 03/10/05 03/10/05

QUAN. ORD.	QUAN. SHP.	QUAN. B.O.	ITEM NUMBER	DESCRIPTION	PRICE	AMOUNT
100	100		V4300	FOLDER/STANDARD/COLECTN	9.800 E	980.00
			SETUP	METALLIC DOLC HOUSTON	0.000 E	0.00
				BIT HWY/SUBST STERIA		

*Handwritten notes:*  
 1-2-93-12-1  
 10/1/02  
 10/1/02

We appreciate your business!

TERMS	930.00	0.00	82.70	0.00	1069.70
TOTAL					TOTAL

This account has been assigned to us by the dealer. Any balance due on this order is payable only to The Heritage Co. at Arlington, Tarrant County, Texas.  
 Make all checks payable to The Heritage Co.

**THE Heritage COMPANY**  
 P.O. BOX 747  
 2025 SOUTH COOPER  
 (817) 860-5700 FAX (817) 860-7750  
 ARLINGTON, TEXAS 76004-0747

**THE Heritage COMPANY**

MIDWEST ENERGY INC  
 AT THE ROBERT HELM  
 P.O. BOX 998  
 HAYS KS 67601

MIDWEST ENERGY INC  
 AT THE ROBERT HELM  
 1330 CENTERBURY DR  
 HAYS KS 67601

LINE SHIPPED INVOICE DATE INVOICE NO.  
 LWS Ground  
 FOB Factory

ORDER DATE INVOICE DATE DATE SHIPPED INVOICE NO.  
 PRICE  
 1.100 E  
 10.75 E

AMOUNT  
 561.00  
 10.75

SALESPERSON  
 LINDA HOVATLY

DESCRIPTION  
 POWER CLP W/ KNOCKOUT - BLK GRIF  
 2000 EAF PUMP & PUPPLE  
 ALL TRANSPARENT W/MT THE

QUAN. B.O. QUAN. SHP. QUAN. ORD.  
 510

ITEM NUMBER  
 510

UNIT NO.  
 510

517-212  
 1-2-93-10-4  
 1/19/93  
 9/11  
 JS

We appreciate your business

TERMS	NET 30	INS.	579.75	0.00	39.00	0.00	TOTAL
SUB-TOTAL		FRIGHT/HANDLING	SALES TAX				We appreciate your business



THE *Heritage* COMPANY  
 P.O. BOX 747  
 2025 SOUTH COOPER  
 (817) 860-5700 FAX (817) 860-7750  
 ARLINGTON, TEXAS 76004-0747

This account has been assigned to us by the dealer. Any balance due on this order is payable only to The Heritage Co. at Arlington, Tarrant County, Texas.  
 Make all checks payable to The Heritage Co.

CUSTOMER NO.  
 100278  
 24076  
 JOB NO.

MIDWEST ENERGY INC  
 ATTN: ROBERT HELM  
 PO BOX 898  
 HAYS KS 67801

MIDWEST ENERGY INC  
 ATTN: ROBERT HELM  
 1330 CANTERBURY RD  
 HAYS KS 67801

UPS Ground  
 FOB Factory

UNIT NO.	CUSTOMER P.O. NO.	SALESPERSON	ORDER DATE	INVOICE DATE	DATE SHIPPED	INVOICE NO.
		LINDA NOVOTN	12-08-04	01-10-05		

QUAN. ORD.	QUAN. SHP.	QUAN. B.O.	ITEM NUMBER	DESCRIPTION	PRICE	AMOUNT
			T-24	GOLF PALATTIURIST DT GOLD WHITE W/GREEN & BLU IMP	36.170 E	848.00

We appreciate your business!

*Handwritten notes:*  
 1159.01  
 424.50  
 1-2-930-10-1  
 [Signature]

TERMS	858.00	0.00	16.29	0.00	TOTAL
	SUB-TOTAL	INS.	FREIGHT/HANDLING	SALES TAX	

Additional conditions on reverse side also apply to this invoice.

*THANK YOU*

We appreciate your business



THE **Heritage** COMPANY  
 P.O. BOX 747  
 2025 SOUTH COOPER  
 (817) 860-5700 FAX (817) 860-7750  
 ARLINGTON, TEXAS 76004-0747

This account has been assigned to us by the dealer. Any balance due on this order is payable only to The Heritage Co. at Arlington, Tarrant County, Texas.  
 Make all checks payable to The Heritage Co.

CUSTOMER NO. 44  
 ADDRESS: 2766 LINDA HOVINY  
 ATTN: ROBERT HELM  
 PO BOX 398  
 HAYS KS 67601

SALESPERSON  
 ORDER DATE: 10/26/01  
 INVOICE DATE: 10/26/01  
 DATE SHIPPED: 10/26/01  
 INVOICE NO. 575105

UNIT NO.	CUSTOMER P.O. NO.	QUAN. SHP.	QUAN. B.O.	ITEM NUMBER	DESCRIPTION	PRICE	AMOUNT
				H-16	DOUBLE BAL/MILK COOPER DIST SUPER FERTILIZER & ML IMP	53.330 E	
SUB-TOTAL						539.92	0.00
FREIGHT/HANDLING						15.53	0.00
SALES TAX							575.105
<b>TOTAL</b>							<b>575.105</b>

*Handwritten notes:*  
 1-2-930-10-1  
 11/10/01  
 [Signatures]

We appreciate your business.

Additional conditions on reverse side also apply to this invoice.

We appreciate your business.

7247X 2021



THE *Heritage* COMPANY  
 P.O. BOX 747  
 2025 SOUTH COOPER  
 (817) 860-5700 FAX (817) 860-7750  
 ARLINGTON, TEXAS 76004-0747

This account has been assigned to us by the dealer. Any balance due on this order is payable only to The Heritage Co. at Arlington, Tarrant County, Texas.

Make all checks payable to The Heritage Co.

CUSTOMER NO.

100298

76977

JOB NO.

MIDWEST ENERGY INC  
 ATTN: ROBERT HELM  
 PO BOX 898  
 HAYS KS 67601

MIDWEST ENERGY INC  
 ATTN: ROBERT HELM  
 1330 CANTERBURY RD  
 HAYS KS 67601

UPS Ground  
 FOB Factory

UNIT NO.	CUSTOMER P.O. NO.	SALESPERSON	ORDER DATE	INVOICE DATE	DATE SHIPPED	INVOICE NO.
		2768 L. HERRINGTON	12/05/04	01/05/05	01/05/05	
QUAN. ORD.	QUAN. SHP.	QUAN. B.O.	ITEM NUMBER	DESCRIPTION	PRICE	AMOUNT

N-05

GOLF BALLS/HEADS BY VELOCITY  
 WHITE W/BLACK & RED TRP

0.830 E

4.1500

We appreciate your business!!!

*Handwritten:*  
 2,145.55  
 2,539.93  
 1-2-930-104  
 [Signature]

TERMS	499.92	0.00	28.06	0.00	527.98
	<b>SUB-TOTAL</b>	<b>INS.</b>	<b>FREIGHT/HANDLING</b>	<b>SALES TAX</b>	<b>TOTAL</b>

Additional conditions on reverse side also apply to this invoice.

**THANK YOU**

We appreciate your business







Midwest Energy, Inc.  
Construction Work in Progress

Attachment to DR No. 167

Work Order #	Amount	Status	Date Closed
04-00182	1,275.26	Open	
04-01234	650.76	Closed	3/31/2006
04-01866	1,045.49	Closed	3/31/2006
05-00004	1,554.50	Closed	1/31/2006
05-00169	6.00	Open	
05-00205	357.26	Open	
05-00207	300.00	Closed	3/31/2006
05-00275	1,497.67	Closed	2/28/2006
05-00318	623.37	Closed	3/31/2006
05-00319	978.97	Closed	2/28/2006
05-00735	728.58	Closed	3/31/2006
05-00737	2,373.73	Closed	3/31/2006
05-00755	7,831.39	Closed	1/31/2006
05-00789	6,415.84	Closed	2/28/2006
05-00808	1,350.62	Closed	2/28/2006
05-00884	149.29	Closed	5/31/2006
05-00975	113.71	Closed	2/28/2006
05-00986	426.45	Open	
05-00991	728.40	Closed	3/31/2006
05-01007	971.53	Closed	2/28/2006
05-01133	2,485.49	Closed	5/31/2006
05-01302	106,691.17	Open	
05-01382	29.13	Open	
05-01390	135.81	Open	
05-01399	29,846.02	Open	
05-01416	386.36	Open	
05-01437	1,425.63	Open	
05-01442	8,824.79	Closed	2/28/2006
05-01510	385.23	Open	
05-01512	6,471.08	Closed	1/31/2006
05-01513	309.12	Open	
05-01518	6,777.58	Closed	1/31/2006
05-01548	7,549.93	Closed	1/31/2006
05-01562	22,446.85	Closed	1/31/2006
05-01572	(304.40)	Closed	2/28/2006
05-01610	7,227.14	Closed	2/28/2006
05-01634	254.19	Closed	2/28/2006
05-01656	42.95	Closed	5/31/2006
05-01658	43.99	Open	
05-01661	1,692.40	Closed	3/31/2006
05-01678	2,537.09	Open	
05-01697	1,539.30	Closed	2/28/2006
05-01698	978.90	Closed	2/28/2006
05-01702	1,475.90	Closed	2/28/2006
05-01703	4,193.01	Open	
05-01733	294.57	Open	
05-01745	15.70	Closed	1/31/2006
05-01747	750.92	Closed	1/31/2006
05-01750	245.72	Closed	1/31/2006
05-01759	406.87	Closed	2/28/2006
05-01766	1,008.88	Closed	2/28/2006

Midwest Energy, Inc.  
Construction Work in Progress

Attachment to DR No. 167

Work Order #	Amount	Status	Date Closed
05-01767	1,088.62	Closed	2/28/2006
05-01773	3,799.69	Closed	1/31/2006
05-01788	1,082.88	Closed	2/2/2006
05-01799	1,083.69	Closed	2/28/2006
05-01802	238.69	Open	
05-01824	6,386.99	Open	
05-01835	3,401.77	Closed	1/31/2006
05-01841	741.72	Closed	2/28/2006
05-01844	1,620.12	Closed	1/31/2006
05-01845	2,453.57	Closed	1/31/2006
05-01846	1,055.33	Closed	1/31/2006
05-01847	278.59	Closed	2/28/2006
05-01849	335.67	Closed	2/28/2006
05-01853	2,850.84	Closed	1/31/2006
05-01856	2,404.88	Closed	3/31/2006
05-01859	2,431.90	Closed	1/31/2006
05-01860	828.70	Closed	2/28/2006
05-01861	550.87	Closed	2/28/2006
05-01867	1,315.92	Closed	1/31/2006
05-01870	1,647.60	Closed	1/31/2006
05-01871	1,346.94	Closed	1/31/2006
05-01873	484.75	Closed	1/31/2006
05-01877	285.86	Open	
05-01879	577.48	Open	
05-01884	90.08	Open	
05-01886	229.33	Open	
05-01887	28.61	Open	
05-01889	263.12	Open	
05-01892	1,474.40	Closed	1/31/2006
05-01897	2,321.83	Closed	1/31/2006
05-01900	4,953.79	Closed	5/31/2006
05-01903	1,498.65	Closed	1/31/2006
05-01906	1,361.39	Closed	1/31/2006
05-01910	449.05	Closed	2/28/2006
05-01922	276.78	Closed	1/31/2006
05-01925	1,035.76	Closed	1/31/2006
05-01928	1,469.66	Open	
05-01933	497.47	Closed	2/28/2006
Overheads to be applied to w/o's	6,670.58		
	<hr/>		
	306,459.71		

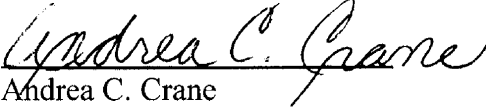
All work orders listed as Open have not been completed and put into service yet.



VERIFICATION

STATE OF CONNECTICUT                    )  
COUNTY OF FAIRFIELD                 )     ss:

Andrea C. Crane, being duly sworn upon her oath, deposes and states that she is a consultant for the Citizens' Utility Ratepayer Board, that she has read and is familiar with the foregoing testimony, and that the statements made herein are true to the best of her knowledge, information and belief.

  
Andrea C. Crane

Subscribed and sworn before me this 19th day of July, 2006.

Notary Public 

My Commission Expires: DECEMBER 31, 2008

**CERTIFICATE OF SERVICE**

06-MDWG-1027-RTS

I, the undersigned, hereby certify that a true and correct copy of the above and foregoing document was placed in the United States mail, postage prepaid, or hand-delivered this 25th day of July, 2006, to the following:

SUSAN CUNNINGHAM, GENERAL COUNSEL  
KANSAS CORPORATION COMMISSION  
1500 SW ARROWHEAD ROAD  
TOPEKA, KS 66604-4027  
Fax: 785-271-3354  
s.cunningham@kcc.state.ks.us  
\*\*\*\* Hand Deliver \*\*\*\*

LAURIE PICKLE, ASSISTANT GENERAL COUNSEL  
KANSAS CORPORATION COMMISSION  
1500 SW ARROWHEAD ROAD  
TOPEKA, KS 66604-4027  
Fax: 785-271-3354  
l.pickle@kcc.state.ks.us  
\*\*\*\* Hand Deliver \*\*\*\*

FRANK A. CARO, JR., ATTORNEY  
POL SINELLI SHALTON WELTE SUELTHAUS  
6201 COLLEGE BLVD  
SUITE 500  
OVERLAND PARK, KS 66211  
Fax: 913-451-6205  
fcaro@pswlaw.com

PATRICK PARKE  
WESTLAND ENERGY, LLC, OF HAYS, KANSAS  
1330 CANTERBURY ROAD  
HAYS, KS 67601



---

Niki Christopher