

Evergy Kansas Central
June 9th, 2024
Significant Event

This report has been prepared and is being submitted to comply with the Electric Reliability Requirements section 3, part N and section 6, part B of Docket 02-GIME-365-GIE.

Beginning on Sunday, June 9th at approximately 2:00 AM, storms in the service area caused numerous interruptions in Evergy Kansas Central. Most of the interruptions occurred in areas surrounding Wichita, Haysville, Shawnee, Sedgwick, Hutchinson, El Dorado, Belle Plaine, and Lenexa.

The peak number of customers without power occurred within the 2:00 AM hour of June 9th and totaled approximately 10,932 customers. These accumulated interruptions have been classified as an IEEE Major Event Day. In total for this event, 18,563 customers experienced sustained service interruptions.

Approximately 18,535 interrupted customers had been restored before 12:00 AM on June 10th.

Communities & Cities affected during the is event period

City or Community Affected
Arkansas City
Atlanta
Augusta
Belle Plaine
Benedict
Benton
Bonner Springs
Buffalo
Buhler
Burns
Caney
Clearwater
Colony
Council Grove
Derby
Eastborough
El Dorado
Emporia
Eskridge
Fall River
Fort Scott
Fredonia
Galesburg
Goddard
Goessel
Grantville
Gridley
Halstead
Haysville
Humboldt
Hutchinson
Independence
Junction City
Kincaid
Lawrence
Leavenworth
Lenexa
Leon
Linwood
Lone Elm
Madison
Maize
Manhattan
Mayetta
Meriden
Miltonvale
Moundridge
Mulvane
Newton
Olathe
Oskaloosa

City or Community Affected
Park City
Parsons
Partridge
Peck
Pittsburg
Rose Hill
Saint Paul
Sedgwick
Shawnee
Shawnee Mission
Thayer
Tonganoxie
Topeka
Towanda
Udall
Valley Center
Valley Falls
Wakefield
Wichita
Yates Center

Circuits Affected

Circuit Name	Retail Electric Customers Affected
BEEC012016	2,249
PENT012014	1,674
HAYS012006	1,633
HAYS012002	1,353
MOCL012002	1,279
MAHA012002	887
14LO012006	798
FOWL012008	669
BELL012002	557
MAHA012004	532
MIDI012062	490
MACA012006	470
MAIZ012002	373
CANA012006	366
CANA012016	325
CLWA012004	312
NEPA013014	308
TYLE012002	281
EFAI012002	280
REED012006	272
41CA012006	192
GODD012002	159
GRNT012024	143
OSAG012002	137
GRNT012022	130
FOWL012002	123
CANA012014	112
MDOW012008	106
TONG012012	103
PARI012004	89
ELPA012002	86
K99 012016	85
NWJC012001	82
COUN012022	76
INDI012002	76
HOOV012024	75
OAKL012002	65
MACA012010	60
PARC012002	57
CITI012032	54
MIDI012072	54
HOOV012032	53
INNO012004	53
RUTA012004	51
WEMP012024	48
CHIS012002	45
NEWT012004	44
SENE012002	44
MINN012024	43
FRLC012004	40
LAWH012024	40

Circuit Name	Retail Electric Customers Affected
PARS013004	40
FARB012004	39
FARB012014	38
WEMP012022	37
DAVI012002	32
HALS012002	32
MOON012024	31
COWS012022	30
PECK012012	27
TYLE012004	25
BECR012012	24
MIDI012066	24
MADI012016	21
MIDL012012	20
COND012002	19
ORCH012004	19
FOWL012010	16
SESK012001	16
DRAG012012	15
HESS012002	15
TORO012012	15
30PR012014	14
MASC012004	14
HMAY012001	13
MATT012003	12
27CR012005	11
54MR012005	11
MOSS012012	11
WAKE012002	11
CANA012026	10
HALS012006	10
TAYL012004	9
WHAR012012	9
17TH012072	8
HOOV012022	8
MOBI012008	8
NEPA013006	8
RIVE012016	8
CHIS012004	7
OSKA012000	7
PAWN012022	7
THUN012002	7
CLWA012002	6
LAWH012012	6
PECK012002	6
TIMB012002	6
UDAL012008	6
4VAN012030	5
OSAG012010	5
VIST012022	5
WJC 012003	5
41CA012005	4

Circuit Name	Retail Electric Customers Affected
ADA 012002	4
DAVI012004	4
JAGG012012	4
M012001	4
MASC012006	4
OAKH012000	4
OATV012002	4
RUTA012002	4
166 012016	3
ADAM012004	3
ALLE012004	3
EAST012034	3
FAIG012006	3
FARB012012	3
HYDR012002	3
LEON012004	3
MIDI012076	3
MONT012004	3
RIVE012014	3
SKEL012010	3
29GA012003	2
43LO012006	2
DEER012014	2
ELPA012006	2
FMC 012016	2
INDE012002	2
MULB023004	2
NORL012005	2
PEAB012012	2
PITT012006	2
QUIN012009	2
REED012004	2
VIRG012026	2
WARE012004	2
WEBB012004	2
21ST012016	1
6TH 012034	1
ALLE012002	1
ALTO012002	1
BEAR012014	1
CANA012024	1
CECR012012	1
COTT012016	1
ESTR012054	1
FAIG012004	1
GALE012002	1
GREE012004	1
HALS012008	1
HYDR012004	1
INMA012002	1
MACA012008	1
MADI012014	1

Circuit Name	Retail Electric Customers Affected
MAGN012002	1
MARM012004	1
MENT012012	1
MONT012002	1
NEPA013012	1
OATV012008	1
ORCH012002	1
PAWN012014	1
PAWN012024	1
QNCY012002	1
SENE012012	1
SENE012016	1
SGAG012024	1
SHEF023004	1
STWN012026	1
TESC012001	1
TONT012002	1
VIST012004	1
WALG012000	1
WARE012006	1
WEMP012036	1
WHAR012002	1
WHAR012004	1

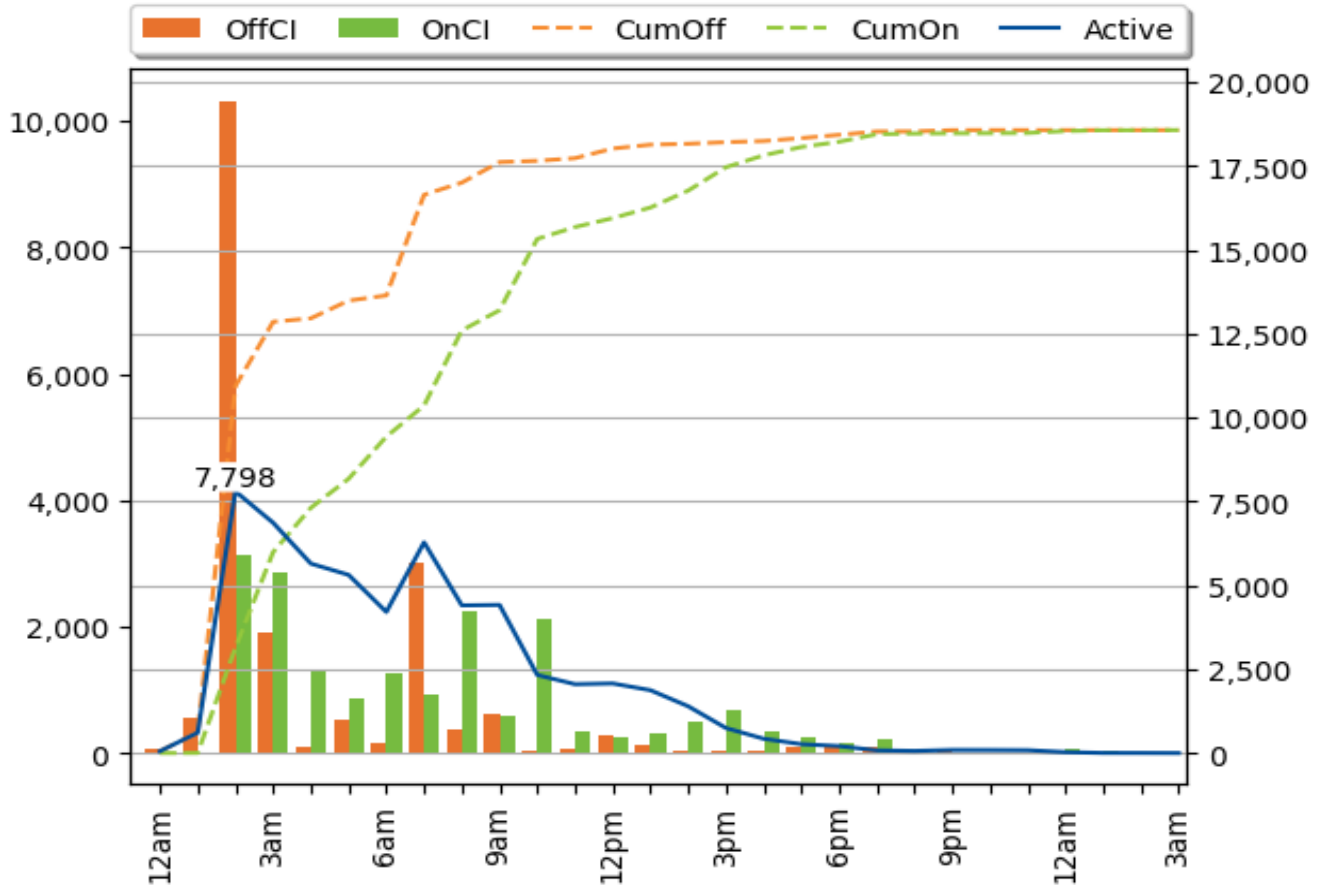
Root Causes

Root Cause	Customers Out	Number of Events
Weather	15,309	166
Unknown	1,614	20
Equipment	571	27
Vegetation	549	45
Wildlife	506	24
Other	14	3

Customers Out by Cause and Failed Component Type

Failed Component	Equipment	Other	Unknown	Vegetation	Weather	Wildlife	Total
Cable	63	0	0	0	0	0	63
Connector	4	0	6	33	121	8	172
Insulated Transition	1	0	0	0	0	0	1
Interrupting Device	175	0	269	111	1,642	498	2,695
Lightning/Surge Arrester	0	0	1	0	9	0	10
None	0	2	0	18	65	0	85
Other Equipment	1	0	1,296	0	7,469	0	8,766
Structural Support	4	4	31	2	2,743	0	2,784
Switch	6	0	11	0	387	0	404
Transformer	6	0	0	0	33	0	39
Wire	311	8	0	385	2,840	0	3,544
Total	571	14	1,614	549	15,309	506	18,563

Restoration Over June 9th, 2024



All data in the graph depict customer interruptions or CI.
 The Bars use the left Y-axis. The Lines use the right Y-axis