

BEFORE THE STATE CORPORATION COMMISSION
OF THE STATE OF KANSAS

In the Matter of the Complaint Against)
Kansas Power & Light (Evergy))
By William J. Flohrs) DOCKET No. 20-EKME-397-COM

**COMPLAINANT RESPONSE TO EVERGY'S "MOTION TO DISMISS OF EVERGY
METRO, INC."**

On May 21, 2020, Evergy Kansas Metro (Evergy) filed a Motion to Dismiss in the above case. Since much of the document is false and inaccurate, the Complainant (William J. Flohrs) wishes to offer evidence that Evergy is misleading the Kansas Corporate Commission (KCC) in order to continue to violate the law and avoid the KCC from acting against them. Evergy's Motion to Dismiss should be denied and the case should proceed.

Introduction

1. Evergy makes the statement: "Mr. Flohrs contends that Evergy's contractor damaged a tree in his yard when trimming the tree to obtain clearance from a transmission line that runs through Mr. Flohrs' yard."

- a. **Answer:** This isn't a contention; it is a fact. Exhibit 3 (10 pages) clearly documents exactly what happened. Tree branches that were nowhere near the 161kV lines were cut off at the tree trunk! This is destruction of personal property that has no chance of ever coming into contact with the Evergy power line. The picture clearly shows Evergy cut limbs back to the trunk of the tree. A picture also shows that the tree was nowhere close to the Evergy power line. Yet another picture shows the destruction to the yard. When Jeremie Bryant of Thorne Tree was asked if he was going to repair the damage

to the yard that he caused, he said, "Fuck you. You can kiss my ass." (then he turned and walked away and slapped the back of his pants). This kind of abusive behavior from Evergy on personal property is repugnant, offensive, disrespectful, and out of line. This kind of attitude and behavior is consistent with the experiences that the Claimant has encountered with Evergy.

Conclusion: This is an example of the abuse that Evergy exhibits when it is trimming trees. They feel that they can do whatever they want and not provide any guidelines that they adhere too. They follow no rules or regulations.

2. Evergy makes the statement: "Evergy Kansas Metro identified the need to trim the trees in Mr. Flohrs' backyard during its annual patrol of the 161 kV line that runs through the yard."

Answer: Evergy has been asked on several occasions to provide a copy of their Transmission Vegetation Management Plan for 161 kV lines (TVMP). If you go to the KCP&L website (this information has recently been removed) to try and determine what their TVMP, the only thing you can find is seen in Exhibit 2 (4 pages). This information references the following:

1. "to comply with regulations from the North American Electric Reliability Council,"
2. "consistent with good arboricultural practices."
3. "Trimmers try to preserve as much of the tree's beauty as possible."

It is difficult to determine from the documents in Exhibit 2 what Evergy will do as far as Transmission Vegetation Management Plan for 161 kV lines (TVMP) is concerned. Docket 10-KCPE-809-COM (Staff Exhibit TBD-2) shows a diagram of what Evergy interprets as "Conductor Clearance". The diagram over exaggerates one of the cornerstones of Evergy's

aggressive tree trimming program, Line Sag. Line Sag is a myth and the KCC has gone on record stating the same position.

The door hanger that was left on our door on March 6, 2020 also has yet another diagram explaining Evergy's tree trimming program (Exhibit 4). There are several conflicting and confusing guidelines, yet when Evergy is asked for specific vegetation management guidelines, it produced a 1-page Power Point slide (Exhibit 5) that conflicts with all the above documents.

Yet another document from Evergy (Exhibit 6) gives an entirely different definition.

KCC has relied on SPP RE and the FAC-003-1 section R1 for guidance and Evergy has communicated to the KCC that it follows the above guidelines. However, Evergy will not, or cannot, provide a current Transmission Vegetation Management Plan for 161 kV lines (TVMP) as outlined in the document with specific distances between lines and vegetation, therefore it is not in compliance with Docket No. 02-GIME-365-GIE.

Conclusion: KCC needs to bring Evergy into compliance. Evergy cannot or will not provide a copy of their vegetation management program for 161 kV lines. KCC needs to have Evergy provide a clear and concise vegetation management program for 161kV lines. Evergy is not in compliance with Exhibit 2.

3. Evergy makes the statement: "The trees at issue have been trimmed numerous times before."

Answer: In this instance, Evergy lied and deceived the Claimant. I have attached a copy of the door hanger that was left on June 27, 2019 (Exhibit 1).

I called the number listed on the card and asked if the trimming was going to be the same as the past, and the man said “yes”. I asked when they were coming, and he said, “sometime this summer”. The Tree Trimming box is checked, but the line that indicates cut back was left blank, so there is no way for the customer to determine exactly what Evergy’s intentions are.

On March 6, 2020 a man left a door hanger on our door (Exhibit 4). He did not ring the doorbell as the document indicated. I called the number on the card immediately, but no one answered. I left a message, but no one called back. The card was not filled out completely, so it is difficult to know what Evergy’s intentions are for tree trimming.

I asked the KCC to instruct Evergy to not enter my property, perform any further damage to our trees, or do any further tree trimming until all legal avenues of this complaint have been addressed. KCC notified Evergy and thus far they have complied.

Conclusion: KCC needs to bring Evergy into compliance. Evergy does not provide a clear and concise Transmission Vegetation Management Plan for 161 kV lines (TVMP). Evergy, as a habit, lied to the Complainant, was abusive in speaking with the Complainant and should be held accountable for the reprehensible behavior.

4. Evergy makes the statement: “Evergy has confirmed that its contractor trimmed the trees on Mr. Flohrs’ property in this instance in a manner consistent with Evergy’s vegetation management policy and guidelines.”

Answer: Evergy has not provided any such guidelines that it is referencing. If you go to the KCP&L website (this information has recently been removed) to try and determine what their

Transmission Vegetation Management Plan for 161 kV lines (TVMP), the only thing you can find is seen in Exhibit 2 (4 pages). This information references the following:

4. "to comply with regulations from the North American Electric Reliability Council,"
5. "consistent with good arboricultural practices."
6. "Trimmers try to preserve as much of the tree's beauty as possible."

It is difficult to determine from the above information what Evergy will do as far as vegetation management is concerned.

Conclusion: The KCC needs to hold Evergy accountable. 18-KCPE-095-MER stipulates that Evergy will supply such guidelines. However, neither the KCC nor Evergy can provide a copy of the Transmission Vegetation Management Plan for 161 kV lines (TVMP).

5.. Evergy makes the statement: "The tree that is the subject of Mr. Flohrs' complaint was not left unsafe. *That tree is still healthy, and no other property damage occurred.*"

Answer: There is absolutely no basis for this claim. Evergy has not inspected the trees (there are 2 trees, not one) with the Complainant. Evergy has not provided a report from a certified arborist to the Claimant about the two trees that Evergy damaged. The fact that Evergy only thinks there is one tree involved and not two is further evidence that they have no idea what transpired on the Claimants property and have not done a visual inspection.

Conclusion: This is a bold-faced lie on the part of Evergy. The KCC needs to hold Evergy accountable and stop them from lying to their customers.

6. Evergy makes the statement: Evergy has the right to trim trees as deemed necessary by the Company.

Answer: Evergy has no such right to trim any tree that they want. They are governed by documents that they must file with the KCC that spell out their Transmission Vegetation Management Plan for 161 kV lines (TVMP).

Conclusion: K.A.R 66-101. Electric public utilities; power, authority and jurisdiction of state corporation commission. The Commission is given full power, authority and jurisdiction to supervise and control the electric public utilities, as defined in K.S.A. 66-101a, doing business in Kansas, and is empowered to do all things necessary and convenient for the exercise of such power, authority and jurisdiction.

7. Evergy makes the statement: "The Order states that "[e]ach utility should maintain clearances of vegetation from the utility's overhead transmission and primary distribution facilities sufficient to avoid limb contact under design-basis events."

Answer: Please refer to Exhibit 3 of this filing. How does cutting a tree limb back to the trunk of the tree fall into Energy's Transmission Vegetation Management Plan for 161 kV lines (TVMP)? This is an example of the abusive approach that Evergy has routinely used with the Complainant.

Conclusion: The KCP&L 161kV line that runs through the subject property is covered in the following regulation: K.S.A 66-183. Stringing wires along or across streets, highways or public places; regulations. All public utilities owning or operating wires for the transmission of telegraph or telephone messages or for the transmission of electricity upon, along, or across the streets, highways or public places in this state are required to so use,

string and maintain such wires as to avoid unreasonable injury or interference from the wires of other utilities and to avoid unreasonable injury to and interference with the wires of other utilities, and the corporation commission is given the power, and it is hereby made its duty, to prescribe reasonable rules and regulations with respect to the stringing and maintaining of wires in all cases where there is danger or possibility of unreasonable interference with or damage to the wires or service of one utility by those of another utility and with respect to the support, maintenance, repair and reconstruction thereof, which rules shall be furnished to any interested person upon application to the corporation commission, and the corporation commission is given the power, and it is hereby made its duty to prescribe reasonable rules and regulations with respect to the stringing of wires, electric or otherwise, which cross over or under the tracks of any railroad company and with respect to the support, maintenance, repair and reconstruction thereof, which rules shall be furnished to any interested person upon application; but in no case shall the height of any wires which cross above the tracks of a railway company be less than twenty-five feet from the top of the rails, except trolley and feed wires of electric railroads, which wires shall be not less than twenty-two feet above the tops of the rails.

Evergy has failed to comply with this regulation and is in violation of KCC guidelines. Therefore, they should be fined and brought into compliance.

8. Evergy makes the statement:” Section 6.15 of Evergy Kansas Metro’s General Rules and Regulations”

Answer: This is yet another example of a document that Evergy is referencing that they have not provided to anyone.

Conclusion: Evergy needs to supply the entire document that it is referencing to all parties involved for a thorough and rigorous review. Evergy also needs to have KCC acknowledge that the document is a governing document.

9. Evergy makes the statement: “including providing permission to trim and remove trees.”

Answer: If Evergy believes that this is their operating guideline, then they should be able to articulate that with diagrams and a robust, KCC approved, Transmission Vegetation Management Plan for 161 kV lines (TVMP). This is an arrogant abuse of power on behalf of Evergy and is typical for their approach.

Conclusion: KCC is the governing body for this utility and they need to have Evergy supply the requested documents, have a hearing on the matter, and require Evergy to provide documents that show their current Transmission Vegetation Management Plan for 161 kV lines (TVMP). If the NERC regulations do not apply to this situation, Evergy should provide a copy of the guidelines that do apply and have been approved by the KCC.

Conclusions:

This complaint is being filed with the Kansas Corporate Commission as per: 82-1-220. Complaints. (a) Any person may initiate a complaint proceeding by filing a formal complaint with the commission in which the rates, joint rates, fares, tolls, charges, regulations, classifications, or schedules of any public utility, motor carrier, or common carrier are alleged to be unreasonable, unfair, unjust, unjustly discriminatory, or unduly preferential, or that allege that any service performed or to be performed is illegal, unreasonably inadequate, inefficient, or unduly insufficient, or cannot be obtained. (b) Formal complaints shall be submitted in writing and shall comply with the requirements of these regulations. Formal complaints shall meet the following

conditions: (1) Fully and completely advise each respondent and the commission as to the provisions of law or the regulations or orders of the commission that have been or are being violated by the acts or omissions complained of, or that will be violated by a continuance of acts or omissions; (2) set forth concisely and in plain language the facts claimed by the complainant to constitute the violations; and (3) state the relief sought by the complainant.

The KCC can accept cases that do not meet all 3 of the above conditions. They have done so in the past. **K.S.A. 82-1-202. (a) Unless otherwise required by law, the requirements of these regulations may be waived by the commission if good cause is shown and if it is in the public interest to do so.**

The offensive, abusive, heavy handed, threatening, and vulgar behavior of Evergy can not go unpunished. They must be held accountable for their actions. Why should customers be subjected to this constant repressive, offensive, harassment by Evergy?

As a reminder, this is an example of how Evergy treats people:

On Monday, September 23, 2019, Thorne Tree was here and cut the entire back of our tree off (See Exhibit 3; 10 pages). They have now made the tree unsafe and a hazard. The foreman, Jeremie Bryant of Thorne Tree, was assisted by Bryan Baker, Brett Williams, Ryan Demato, Dawson Pope. Mr. Bryant said that they all were certified arborists. When I asked him to produce the certifications, he told me to, **"fuck off."** I asked him for the guidelines that KCP&L uses for vegetation management for their 161 kV lines, and he said, **"I don't have to give you squat."** I asked him to give me the name of his superior, and he referred me to Brandan Spicer, of ECI. I called them and asked for the documentation on tree trimming, and he said, **"I don't have any, and if I did, I wouldn't give them to you because I don't have too."** As I understand it, ECI is

Environmental Consultants, Inc. a utility vegetation management company from Stoughton Wisconsin. According to their website, they advocate for aggressive vegetation management in order to reduce their clients cost without regard to the safety and esthetics of the work performed. ECI does do not have a Registered Agent in Kansas, so it is difficult to know how to communicate with them.

1. Evergy has been asked for a copy of their Transmission Vegetation Management Plan for 161 kV lines (TVMP). They provided a training slide but nothing else. Evergy had to file a copy of their Transmission Vegetation Management Plan for 161 kV lines (TVMP) with their last rate increase request. Evergy has either been unwilling or unable to provide a copy of said guidelines.
2. KCC has relied on SPP RE and the FAC-003-1 section R1 for guidance and Evergy has communicated to the KCC that it follows the above guidelines. However, Evergy will not, or cannot, provide a current plan as outlined in the document with specific distances between lines and vegetation, therefore it is not in compliance with Docket No. 02-GIME-365-GIE. KCC needs to bring Evergy into compliance.
3. KCC has gone on record as stating that, “the topic of “line sage” has been over-emphasized”. Evergy has missed the point that the clearance between lines and growing trees, not line sag, is the consideration in any vegetation management program.

Analysis:

1. It is obvious that Evergy does not have any control or oversight of its sub-contractors. Evergy does not hold sub-contractors accountable for their actions even though they are responsible for their actions. Evergy is not willing to explain or provide basic

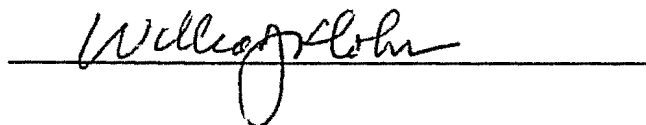
documentation when requested from a customer. KCC is the governing entity in the State and should hold Evergy accountable.

2. In K.S.A. 66-101h. it states: **“The commission shall have general supervision of all electric public utilities doing business in this state and shall inquire into any neglect or violations of the laws of this state by any electric public utility or by the officers, agents or employees thereof. From time to time, the commission shall carefully examine and inspect the condition of each electric public utility, its equipment, the manner of its conduct and its management with reference to the public safety and convenience. Nothing in this section shall be construed as relieving any electric public utility from its responsibility or liability for damage to person or property. In 97-GIME-483-GIE, the KCC stated, “the Commission may, upon its own motion, and without complaint being made, conduct an investigation of an electric utility.”** The KCC is well within its power and scope to investigate Evergy in this matter. The arrogance that Evergy has displayed in its “Motion to Dismiss” is appalling.

Claimant Requests:

1. Evergy’s Motion to Dismiss should be dismissed and this case proceed according to KCC guidelines and rules.
2. Based on the findings of the KCC, Evergy should be fined according to KCC guidelines, and the Claimant should be reimbursed for damages to his property.

Respectfully Submitted,



William J. Flohrs
10633 W 123rd Street
Overland Park, KS 66213
T 913-681-2329

CERTIFICATE OF SERVICE

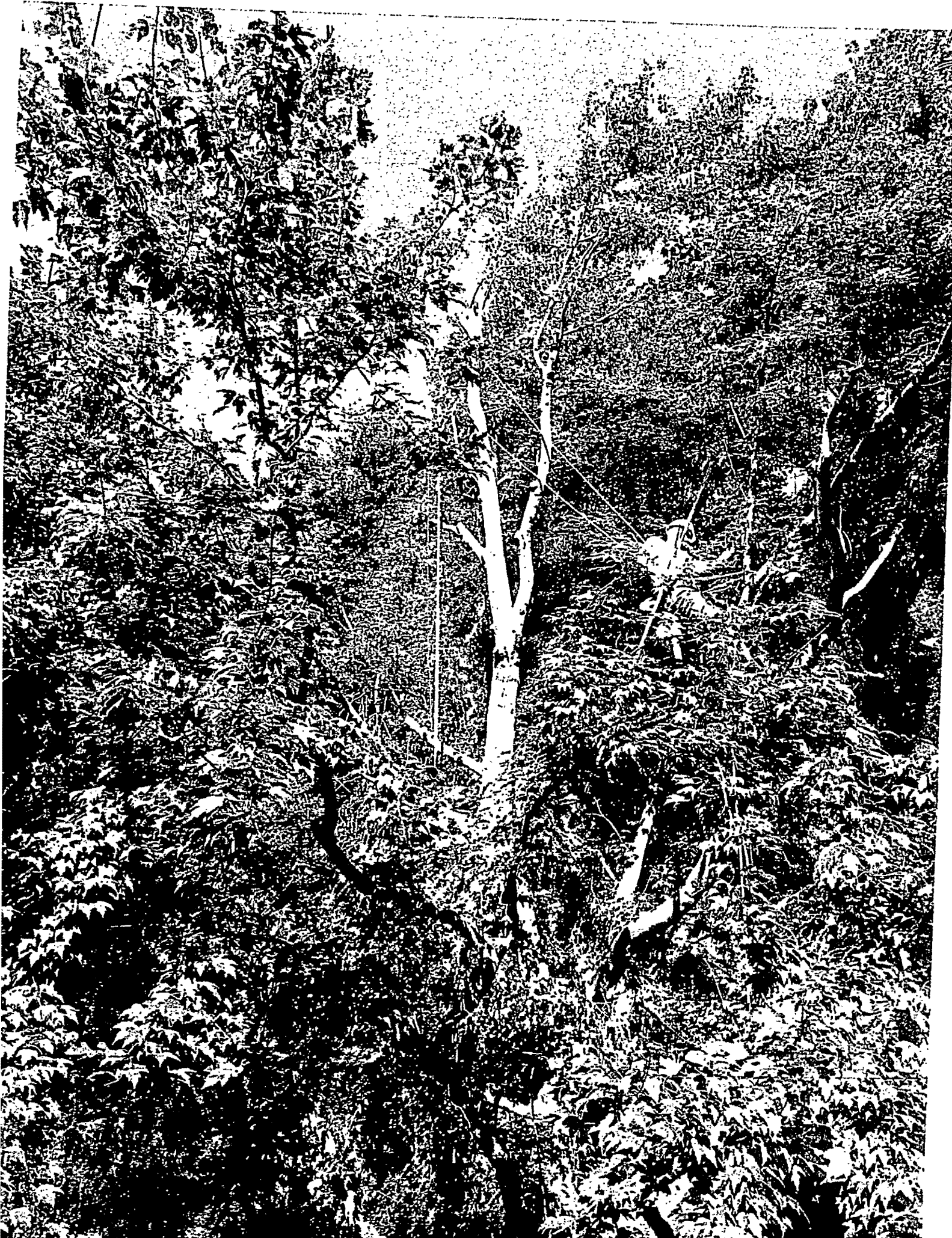
I hereby certify that on the 25th day of May, 2020, the foregoing COMPLAINANT RESPONSE TO EVERGY's "MOTION TO DISMISS OF EVERGY METRO, INC."

was sent via email and certified mail to the parties listed below:

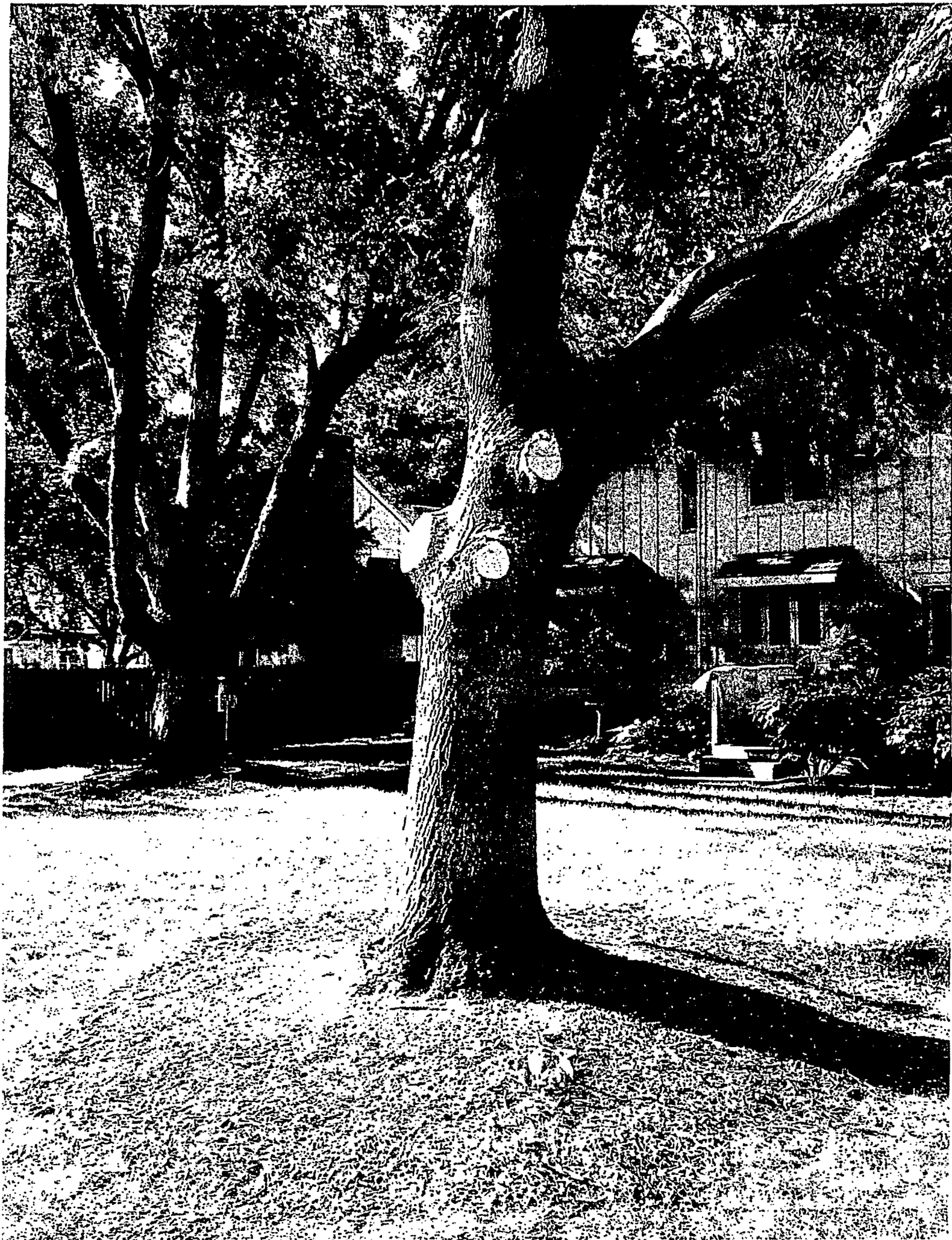
Robert Vincent, Litigation Counsel
Kansas Corporate Commission
1500 SW Arrowhead Rd
Topeka, KS 66604
r.vincent@kcc.ks.gov

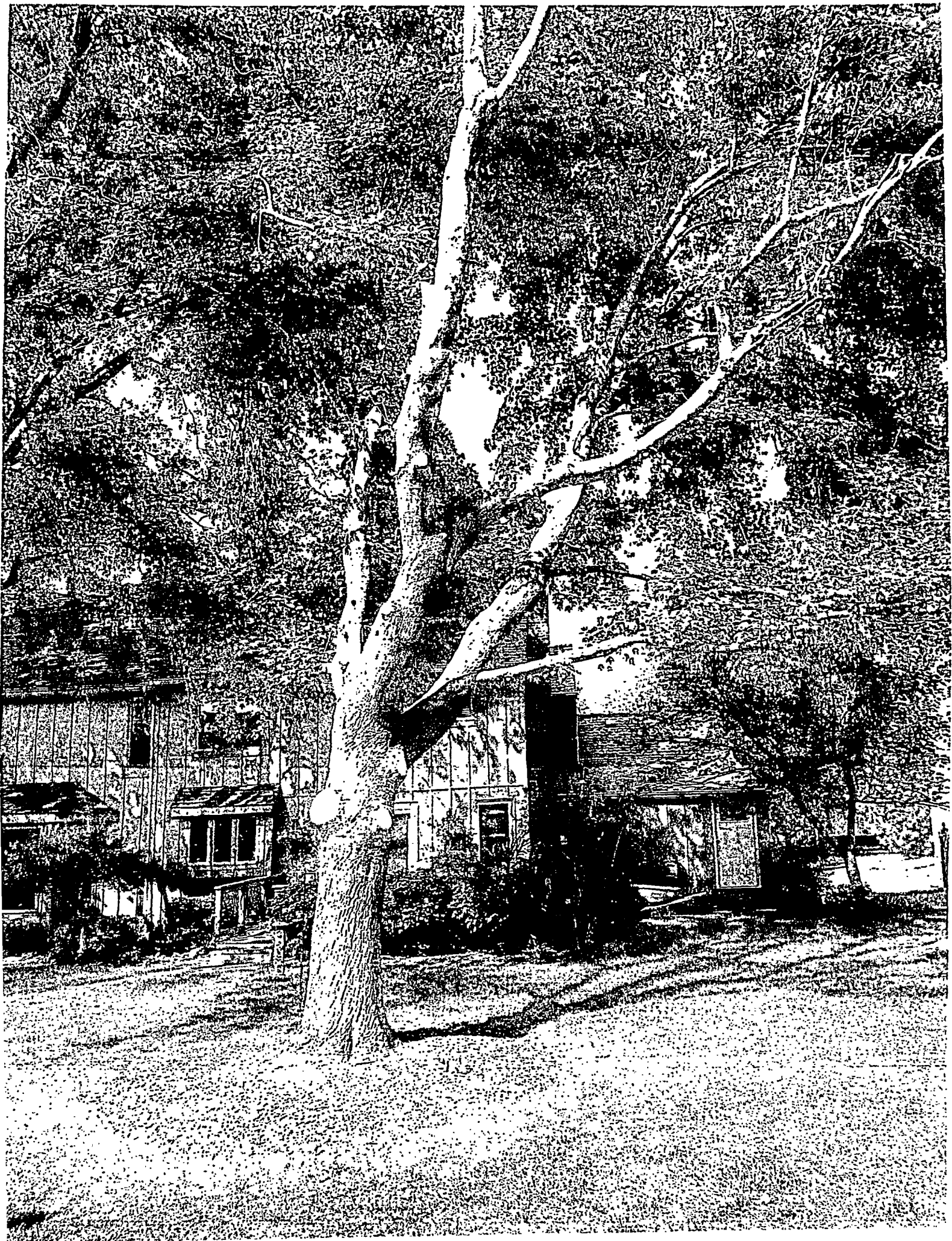
Catheryn Dinges
Evergy Corporate Counsel
818 S. Kansas Avenue
Topeka, KS 66612
leslie.wines@evergy.com

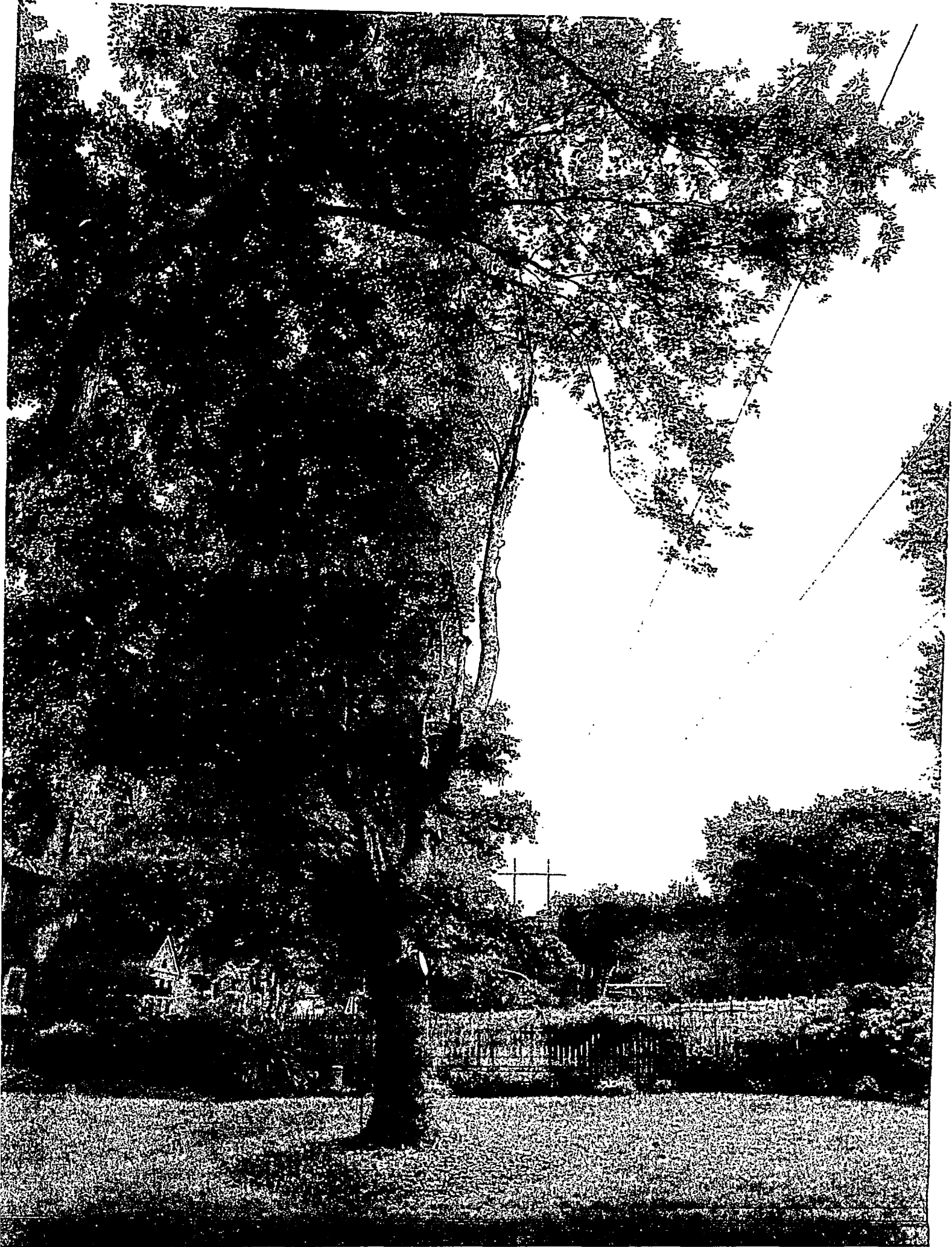


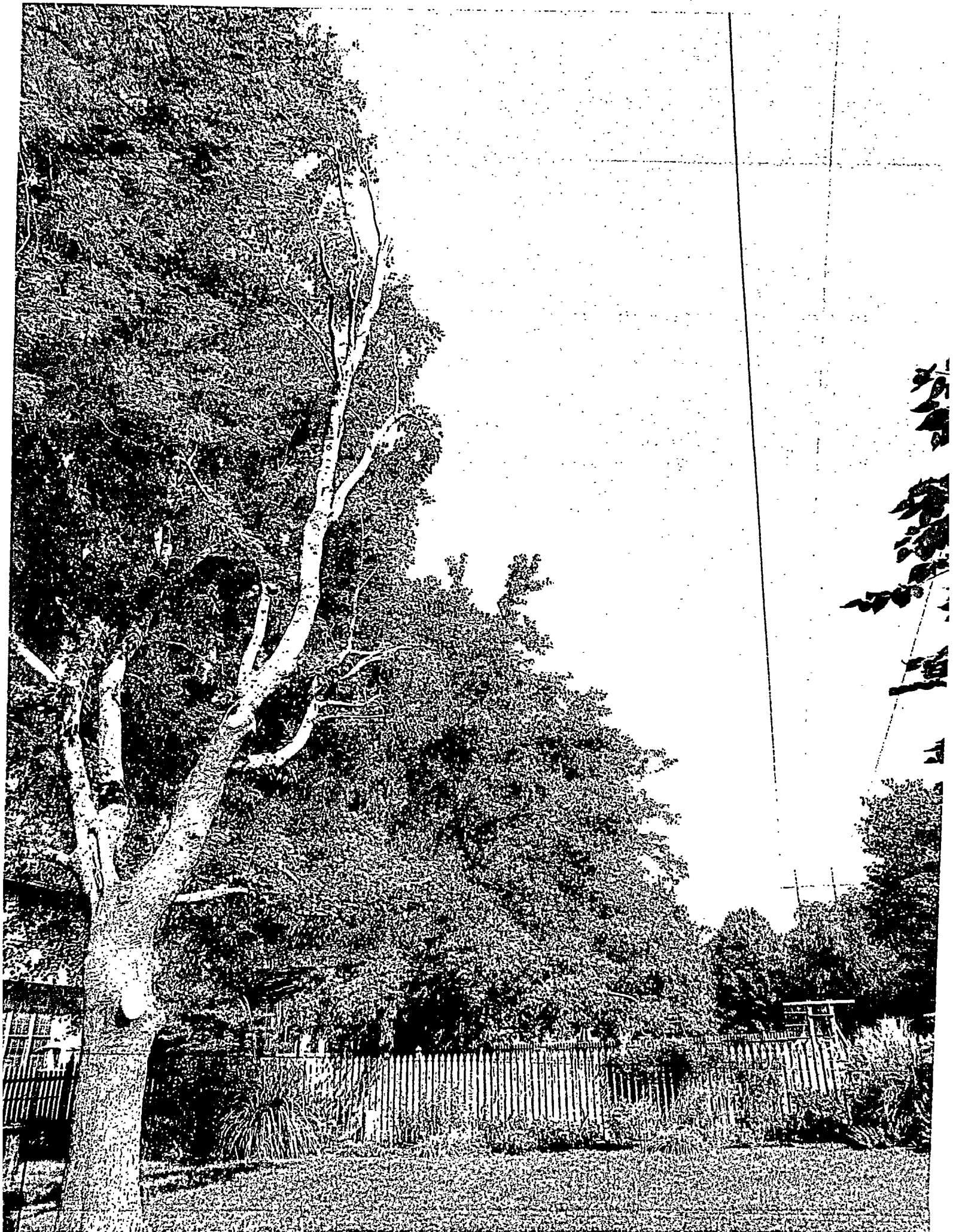




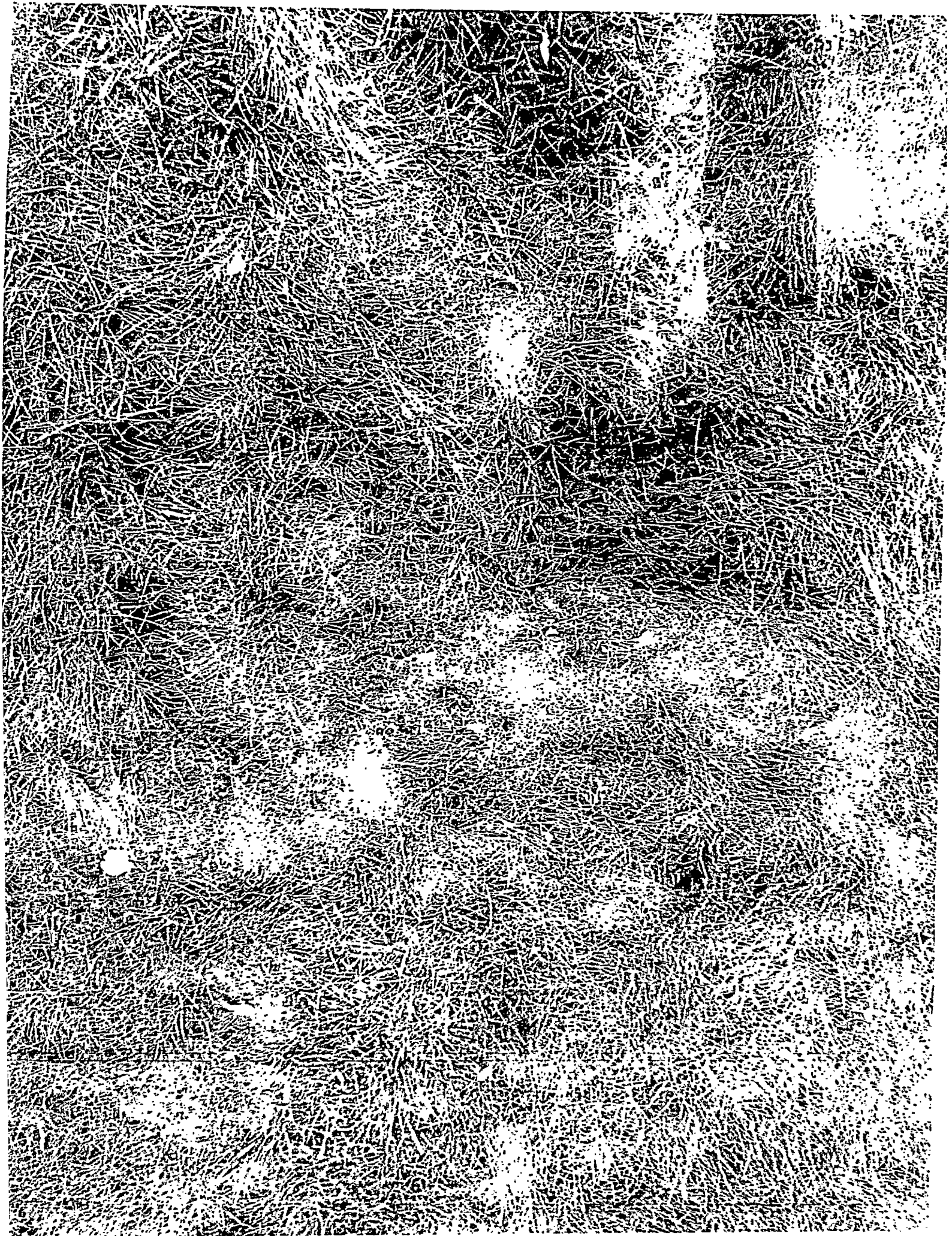















 Home

Involvement

Safety

Tree Trimming and Planting

Our Responsibility

Our Responsibility

We work year-round to manage the impact of trees on power lines. Our tree trimming program helps reduce the impact of vegetation on lines.

Our specially-trained team of utility foresters, supervisors and contractors maintain more than 24,000 miles of lines, which we inspect and address to eliminate potential issues. We let you know if maintenance is needed at your property with a door notice that provides more detail and contact information.

Planting around distribution lines

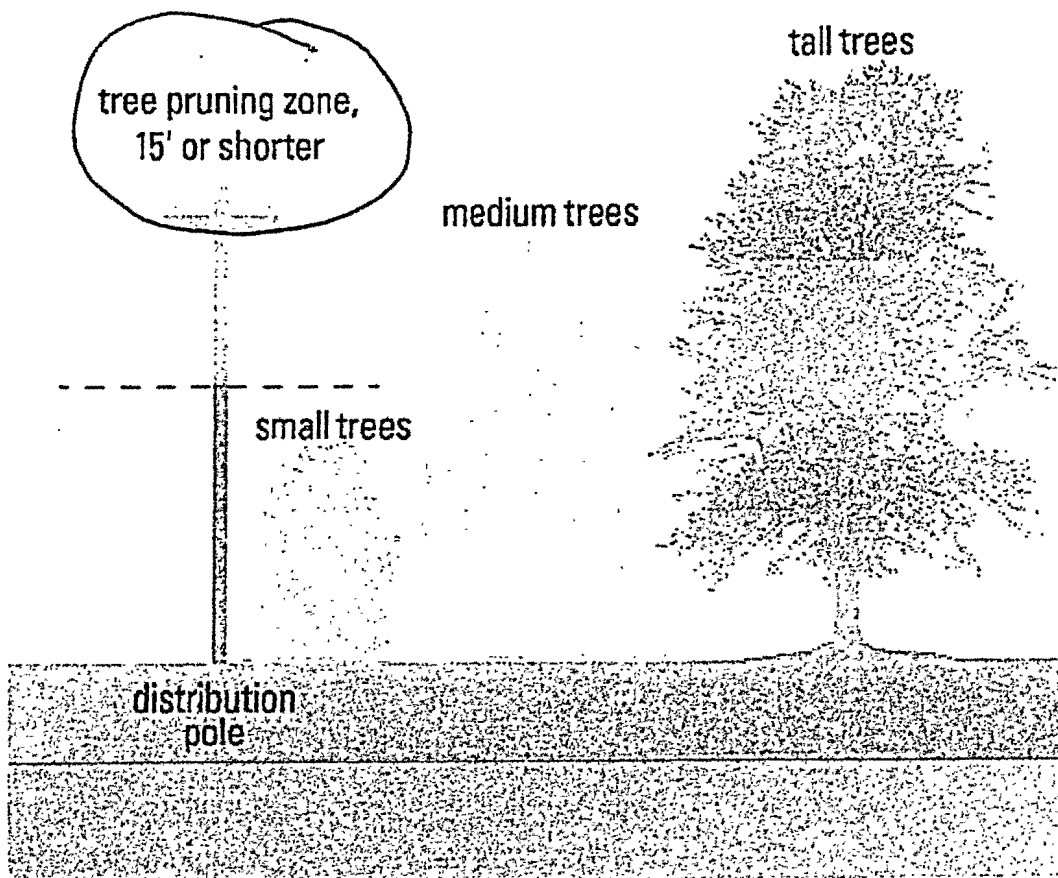
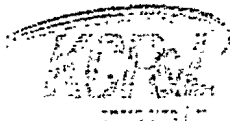


EXHIBIT 2
4 PAGES

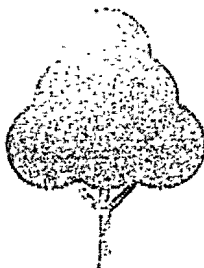
[Home](#)[Involvement](#)[Safety](#)[Tree Trimming and Planting](#)

Trimming Trees and Planting

KCP&L regularly trims trees near power lines as part of our mission to provide safe, reliable electric service.

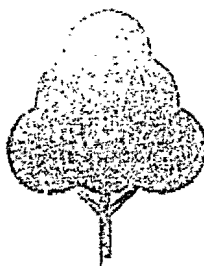
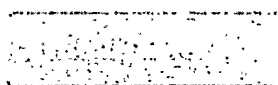
To ensure reliable service, the safety of our employees, and to comply with regulations from the North American Electric Reliability Council, we perform regular vegetation maintenance.

Tree Trimming and Planting Safety



Our Responsibility

KCP&L's tree trimming efforts.



Your Responsibility

Tree trimming responsibilities.

Tree Trimming Guidelines

Tree trimming guidelines take into account the tree's size, species, health and growth rate, as well as its proximity to power lines. Based on regulations, we trim vegetation to create clearance between power lines and the canopy of a tree. We also consider trees or limbs that could blow or fall into lines.

Our crews maintain lines before trees and vegetation are close enough to cause outages, in a way that is consistent with good arboricultural practices. Trimmers try to preserve as much of a tree's beauty as possible while providing enough clearance between limbs and lines to ensure safe and reliable electric service. Crews generally visit neighborhoods once every four to five years.

When vegetation and brush prevents our employees from accessing equipment or interferes with power lines, we clear it with an approved herbicide. For safety reasons, we also use herbicide on vines rather than pulling them from lines.

Most trees along power lines can be maintained through directional pruning or trimming so growth is directed away from lines. We'll only remove large branches from the top of a tree's canopy, if it's necessary, to maintain clearance between lines and the tree.

If we must remove a tree with a trunk larger than four inches in diameter, we first get your permission. Most of these fall under the category of tall-growing "volunteer trees," or trees that spring from seeds by natural causes rather than being planted with human hands. We also treat stumps with a safe application of an approved herbicide to prevent re-growth.

Requesting a Line Clearance

If you see a potential issue with vegetation on the lines that run from pole to pole near your house, please let us know by filling out our [online vegetation request](#) or calling [888-471-5275](tel:888-471-5275). We'll send a crew member to review the vegetation's proximity to the power line and take action if appropriate. Vegetation impacting the line that runs from a pole to your meter are the customer's responsibility. [Learn more](#) about the appropriate steps to take.

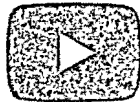
Trimming to Restore Power

When a power outage occurs, our immediate priority is to restore power to our customers. If trimming is necessary to get the lights back on, we:

- Perform a courtesy knock to let you know we're on your property.
- Clear trees and vegetation that interfere with power lines and equipment to ensure restoration is performed safely and quickly.
- Rely on you to clean up the outage debris so we can focus on the work of restoring power to the community. If you need help, check online or in your local directory for a reliable tree or lawn care service company. Many cities in our service area offer debris pick-up or drop-off locations after major storm events.

Watch to learn more about our [routine tree maintenance](#).

Routine Tree Maintenance: What to expect when we c...



Before You Trim Trees

Contact KCP&L Vegetation Management

You can submit an [online request](#) or call [888-471-5275](#).

What is Vegetation?

Vegetation is trees or other plants, including bushes and vines.

Free Tree Mulch

- Delivered when available from our tree trimming efforts.
- Mulch may vary in shape and color.

Planting Guidelines

[A Comprehensive Guide to Planting the Right Tree](#)

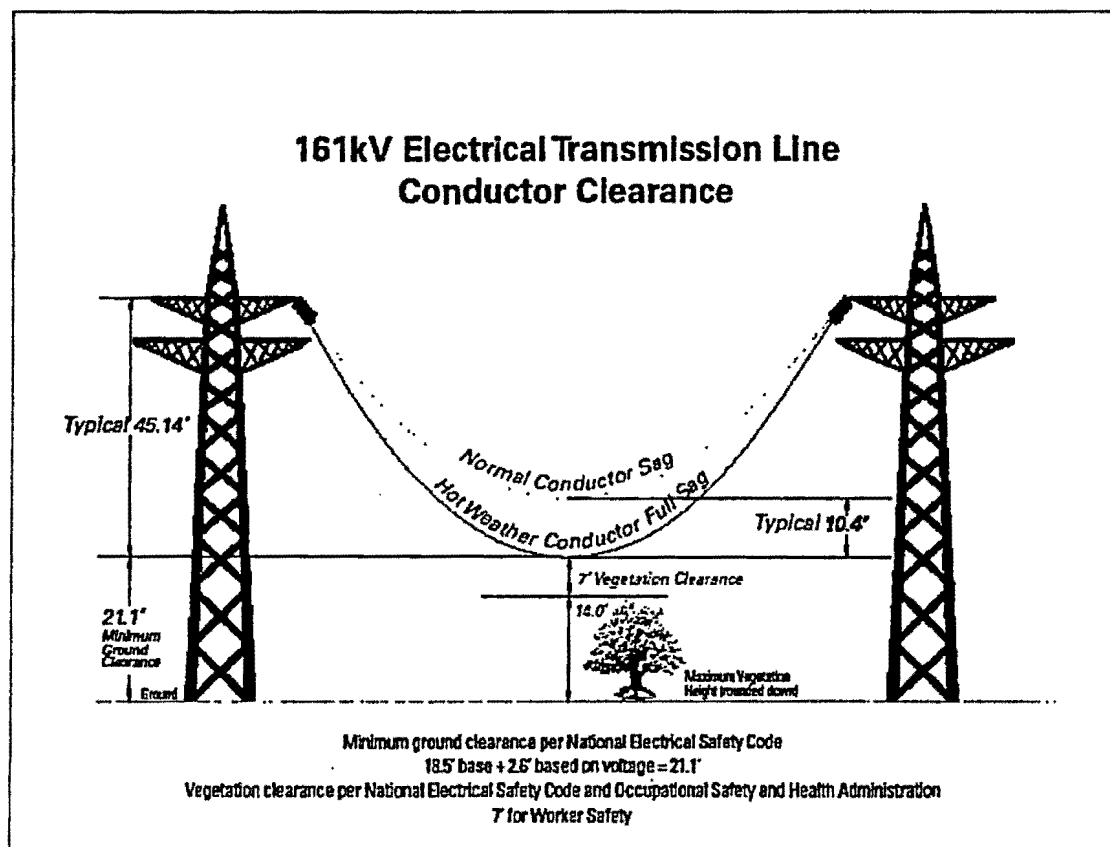
- We will respond to your call or e-mail within two business days.
- If you wish, we will schedule an appointment for a Vegetation Management representative to meet you at your home to discuss the plan.

Escalation Process

After meeting with our Vegetation Management representative, if you are not satisfied with the plan, please follow the process outlined below to address your concerns:

1. Call 1-800-541-0545 or e-mail vm@kcpl.com.
 2. We will respond to your call or e-mail within two business days.
 3. Talk or meet with a KCP&L Vegetation Management manager.
- If resolution is not reached, the Vegetation Management manager will refer your concern to the manager of Resource Management.
4. Talk with manager of Resource Management.

(Attachment 3)



Tree Work Notification

Transmission Utility Easement

Tree Work Will be required

As part of Evergy's commitment to supply safe, reliable electric service, contractors will visit your property to maintain vegetation within the utility easement that could interfere with the transmission power lines.

Our specially-trained utility foresters have identified trees requiring maintenance. Our tree trimming contractors will use arboricultural practices supported by industry standards and tree care professionals.

Trees requiring work are marked with blue paint.

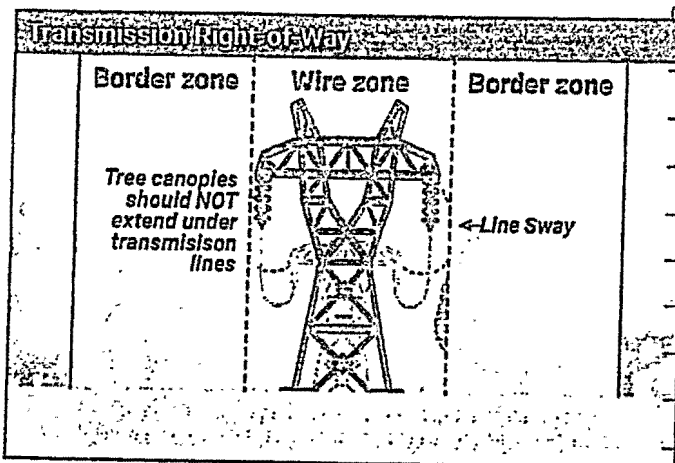
- Single Dot = Side Trim/Crown Reduction
- Double Dot = Good Removal Candidate
- Long Painted Line = Small volunteer trees that will be cut down
- Painted "X" = Removal

***Tree Pruning:** Trees with limbs encroaching the power lines will be cut back to provide sufficient long-term clearance. This may include the removal of branches from the line side of the tree, as well as a reduction in overall height.

***Tree/Brush Removal:** Incompatible trees and brush within the "Wire Zone" will be cut down leaving stumps near ground level. Stumps may receive an herbicide treatment to control re-sprouting.

Mechanical Clearing: Mechanical forestry equipment will be utilized to manage unmaintained, woody areas. Resulting mulched debris will be left on site to naturally decompose, decrease erosion risks, and return nutrients to the soil. Future maintenance will be achieved through targeted application of herbicide to incompatible species.

***All firewood sized pieces will be left on-site. Smaller sized tree limbs and brush will be hauled away.**



Comments

Scheduled maintenance tree work will be done in a few weeks

*Fast growing species within the "Wire Zone" will be targeted for removal

If you have any questions about the work required on your property, please call us at the number below within the next five days.

Brandon

Evergy Representative

913 238 2557

Phone Number



evergy

DEM 250-3
10-19-5602 (09/19)

FORM 250-7
510-19-5602 (09/19)

EXHIBIT 4



Reliability Expectations

- Forester
 - Appropriately identify and categorize required VM activities for each site
 - Secure permission for removals
 - Complete planning and deliver work orders in a timely manner
 - Report structure and/or hardware damage
- Crews
 - Achieve required clearances
 - 161kV- Trees will be cleared ground to sky at least 20' or edge of ROW and to at least 25' below the lowest conductor
 - Cut down all secured removals
 - Eliminate brush manually, mechanically, and/or chemically
 - Apply herbicide to all stumps
 - Report structure and/or hardware damage

KCP&L requires at least 21 feet between the maximum sag on a 161-kilovolt line and the ground and that no vegetation grows more than 14 feet from the ground, leaving a 7-foot clearance.

EXHIBIT 6



Tree Crews will be working near the high voltage lines soon

KCP&L's goal is to provide safe and reliable electric service. Because transmission lines deliver bulk electricity to cities, towns and industry, obstructions to them can create public and safety hazards. Specifically, trees and brush that grow in our right of way near high-voltage transmission lines can cause power interruption and hinder emergency restoration work and line maintenance.

Today we stopped by your property to explain the work we plan to do at this site. You were not here, so the specific work scheduled is indicated on the back of this notice.

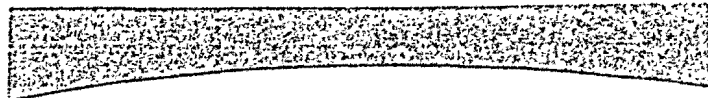
If you have any questions about the work required on your property, please call us at the number below within the next five business days.

Thornes' Tree Serv.

785-625-1817



Form 252-D
32-17-4679 (10/17)



KCP&L controls vegetation within our right of way using one or more of these methods

KCP&L's right of way at this site is approx. _____ wide

- ☐ **Tree Removal/Mowing.** Trees and brush within the right of way will be cut down leaving stumps near ground level. Stumps may receive a herbicide treatment to control resprouting and encourage low-growing, line-compatible vegetation.
- ☒ **Tree Trimming.** Trees along the edge of right of way will be cut back _____ feet to provide sufficient long-term conductor clearance.
- ☐ **Danger Trees.** Trees near the right of way edge that pose a danger to the conductor or public safety will be trimmed back or cut down.
- ☐ **Herbicide Application.** We will apply herbicides that control incompatible woody vegetation. This will encourage the growth of low-growing plants such as grasses, forbs, ferns and shrubs. Converting the right-of-way from trees and brush to a native low-growing plant improves wildlife habitat. In addition, this plant cover is more resistant to tree invasion, which means less work will be needed in the future, reducing the impact on your property and the environment. Our contractors are licensed and will use herbicides registered by the U.S. Environmental Protection Agency.

All firewood will be left on site. Removal of tree limbs from this process will be:

- ☒ Hauled away
- ☐ Stacked and left on site
- ☐ Mulched with mower
- ☐ Left on site

Form 252-D
252-17-4679 (10/17)

"EXHIBIT I"