

BEFORE THE STATE CORPORATION COMMISSION OF THE STATE OF KANSAS

In the Matter of the Application of Hawkins Oil, LLC for a well

Docket No. 23-CONS-3270-CHOR

Marsh #16-A

CONSERVATION DIVISION

well, located in

Operator License No. 32693

Section 6, Township 26 South,

Range 5 E, Butler County, Kansas

Marsh 16 Map of Offset Operators

Please see attached the Map described above.

Hawkins Oil LLC

Dan Flowers

427 S Boston Ave #915

Tulsa, OK 74103

Hawkins Oil, LLC

Project: Butler County, KS
 Site: SEC 6 - T26S - R5E,
 Well: Marsh #16
 Wellbore: OH
 Design: Plan #1

**PROJECT DETAILS:** Butler County, KS

Geodetic System: US State Plane 1927 (Exact solution)
 Datum: NAD 1927 (NADCON CONUS)
 Ellipsoid: Clarke 1866
 Zone: Kansas North 1501

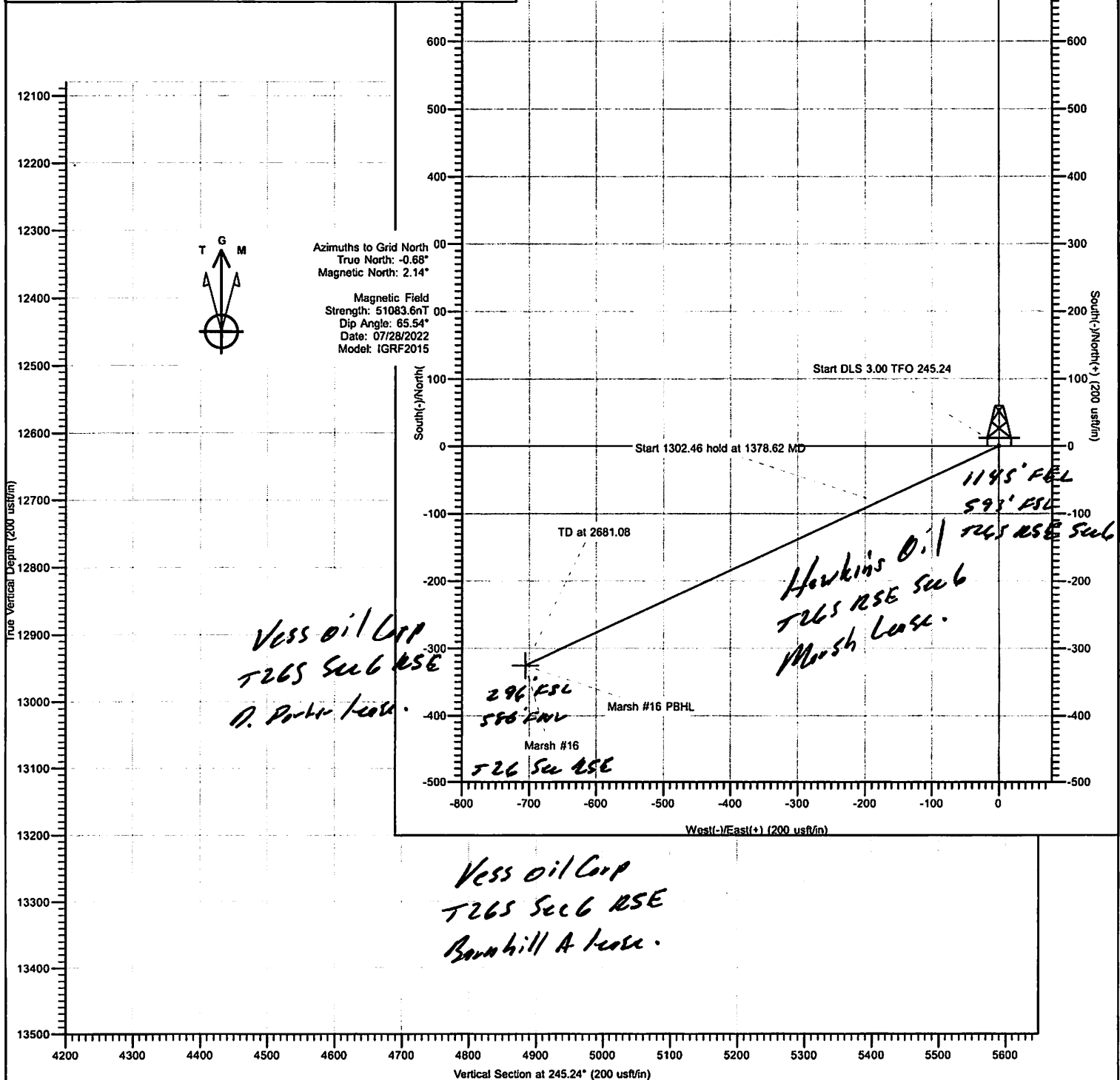
North Reference: Grid
 System Datum: Mean Sea Level

To convert a True Direction to a Grid Direction, Subtract 0.68°
 To convert a Magnetic Direction to a True Direction, Add 2.82° East
 To convert a Magnetic Direction to a Grid Direction, Add 2.14°

WELL DETAILS: Marsh #16

GL 1405' + 16' KB @ 1421.00usft

+N/-S	+E/-W	Northing	Easting	Latitude	Longitude
0.00	0.00	-185251.54	2311643.38	37° 49' 10.600 N	98° 55' 17.200 W



Azimuths to Grid North
 True North: -0.68°
 Magnetic North: 2.14°

Magnetic Field
 Strength: 51083.6nT
 Dip Angle: 65.54°
 Date: 07/28/2022
 Model: IGRF2015

