



Headquarters: 120 W. Kansas Avenue / P.O. Box 707 / Ulysses, KS 67880 / (620) 356-3211 / Toll Free 1-800-360-7893 / (620) 356-3242 Fax  
www.westlinkcom.com

May 14, 2011

Ms. Christine Aarnes  
Kansas Corporation Commission  
1500 SW Arrowhead Road  
Topeka, Kansas 66604-2425

Re: Docket No. 10-GIMT-658-GIT

Dear Ms. Aarnes,

Please find below the response of WestLink Communications, LLC (WestLink) to questions posed in Paragraphs 20 and 21 of the Kansas Corporation Commission Order in Docket No. 10-GIMT-658-GIT.

- 1. Does your Company continue to satisfy the "own facilities" requirement under amended 47 C.F.R. 54.401(a)?

**Response:** WestLink is in compliance with the "own facilities" requirement of 47 C.F.R. 54.401(a).

- 2. If your response to Question 1 is yes; please provide a detailed explanation of how your Company satisfies the "own facilities" requirement in Kansas, including a listing of the facilities used to provide voice telephony service, a description of the facilities, and location of said facilities.

**Response:** Please refer to Attachment A for a detailed listing and map of WestLink tower facilities. WestLink also has switching, transport, and customer service facilities which are not mentioned in the attachment but go towards the "own facilities" requirement of the Order.

**Retail Locations**

214 E. Frontview, Suite A Dodge City, KS 67801 (620) 561-5000	2312 E. Kansas, Suite A Garden City, KS 67846 (620) 937-5000	1910 Broadway Great Bend, KS 67530 (620) 868-5000	120 West Kansas Avenue Ulysses, KS 67880 (620) 356-3211	114 E. Sixth Hugoton, KS 67951 (620) 544-4392	201 N. Main St. Lakin, KS 67860 (620) 355-7355
1504 East 17th Hutchinson, KS 67501 (620) 259-5000	4325 Vine, Suite 20 Hays, KS 67601 (785) 365-5000	616 Fort Riley Blvd. Manhattan, KS 66502 (785) 236-5000	110 Chestnut St. Johnson, KS 67855 (620) 492-6234	211 S. Sequoyah Satanta, KS 67870 (620) 649-2225	411 N. Main St. Scott City, KS 67871 (620) 872-2998
	1642 South Ohio Salina, KS 67401 (785) 721-5000			210 N. Main St. Syracuse, KS 67878 (620) 384-7721	

If you have any questions or require additional information, please contact me.

Regards,



Catherine Moyer  
CEO & General Manager  
Pioneer Communications/WestLink Communications, LLC  
PO Box 707, 120 West Kansas Avenue  
Ulysses, Kansas 67880  
620.356.7133 direct phone  
catherine@pioncomm.net

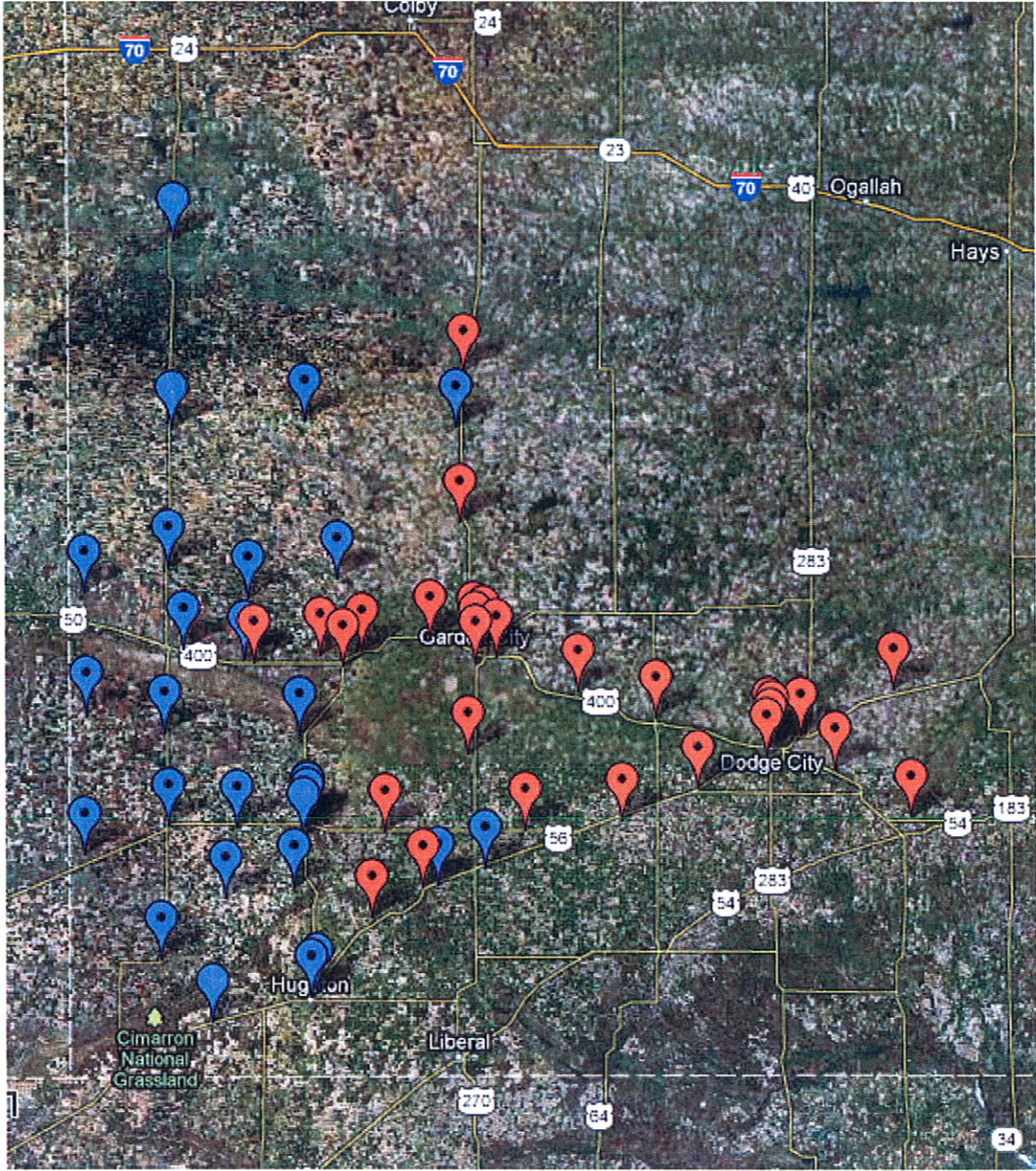
Attachment

## Attachment A

### WestLink Tower Sites

Cost Center	Owned/Leased	Site Name	Cost Center	Owned/Leased	Site Name
Garden City	L	Friend	Pioneer	O	South Coolidge
Garden City	L	Holcomb	Pioneer	O	North Syracuse
Garden City	L	North Garden City	Pioneer	O	North Coolidge
Garden City	L	Garden City East	Pioneer	L	Tice
Garden City	L	Garden City Central	Pioneer	L	Satanta
Garden City	L	South Garden City Omni	Pioneer	L	Haskell County
Garden City	L	Garden City Airport	Pioneer	L	Kendall
Dodge City	L	Dodge City East (Watertower)	Pioneer	L	Lakin
Dodge City	L	Mc Artor Road	Pioneer	L	Deerfield
Dodge City	L	Dodge City	Pioneer	L	Lakin Elevator
Dodge City	L	Dodge City Central	Pioneer	O	North Lakin
Dodge City	L	Fort Dodge	Pioneer	O	Menno Road
Dodge City	L	Offerle	Pioneer	O	North Kendall
Dodge City	L	Ford	Pioneer	O	Richfield
Dodge City	L	Bucklin	Pioneer	O	Johnson
Dodge City	L	Ensign	Pioneer	O	West Manter
Pioneer	L	East Ulysses	Pioneer	O	South Big Bow
Pioneer	L	Tiger Tower	Pioneer	O	Big Bow
Pioneer	O	Ulysses	Pioneer	L	Moscow
Pioneer	O	South Ulysses	Pioneer	O	Hugoton Downtown
Dodge City	L	Cimarron	Pioneer	O	Hugoton
Dodge City	L	Charleston	Garden City	O	Leoiti
Dodge City	L	Montezuma	Pioneer	O	Sublette
Pioneer	O	Syracuse	Garden City	L	North Scott City
Pioneer	O	South Syracuse	Garden City	O	Scott City

Map of WestLink Tower Sites



Red indicates Leased facilities  
Blue indicates WestLink owned towers