

**BEFORE THE STATE CORPORATION COMMISSION  
OF THE STATE OF KANSAS**

In the Matter of the Application of Kansas Gas )  
Service, a Division of ONE Gas, Inc. for )  
Approval of Its Purchase of Southern Star )  
Central Gas Pipeline, Inc.'s Facilities Used to ) Docket No. 24-KGSG-\_\_\_\_-CON  
Furnish Natural Gas Service to Certain )  
Customers and Approval of Customer-Specific )  
Certificates of Public Convenience and )  
Necessity to Serve Said Customers. )

**PUBLIC APPLICATION TO PURCHASE DOMESTIC METER FACILITIES AND  
CUSTOMERS**

Kansas Gas Service, a Division of ONE Gas, Inc. ("Applicant" or "Kansas Gas Service"), pursuant to K.S.A. 66-117, and K.S.A. 66-131, as amended, respectfully requests the State Corporation Commission of the State of Kansas ("Commission" or "KCC") approve an Asset Purchase Agreement executed between Kansas Gas Service and Southern Star Central Gas Pipeline, Inc. ("Southern Star") transferring certain assets, customers, and accounts related to farm tap and irrigation customers from Southern Star to Kansas Gas Service, and issue Kansas Gas Service customer-specific certificates of convenience and necessity to serve certain farm tap and irrigation customers. In support of its Application, Kansas Gas Service states the following to the Commission:

**I. THE APPLICANT**

1. Kansas Gas Service is a natural gas public utility operating in the state of Kansas pursuant to certificates of convenience and necessity issued by the Commission. Kansas Gas Service's principal place of business within the state of Kansas is located at 7421 West 129th Street, Overland Park, Kansas 66213. Kansas Gas Service is a Division of ONE Gas, Inc., one of the country's largest natural gas local distribution companies. Kansas Gas Service serves

approximately 648,000 customers in 360 Kansas communities and is the largest natural gas distribution company in Kansas. Kansas Gas Service's Articles of Incorporation and Bylaws, and its rates, terms and conditions of service and other tariffs, are currently on file with the Commission and are incorporated herein by reference. A map showing Kansas Gas Service's service area is attached to this Application as **Exhibit 1**.

## II. COMMUNICATION

2. Pleadings, notices, orders and other correspondence and communications concerning this Joint Application and proceeding should be addressed to the undersigned counsel, as well as to:

Janet Buchanan  
Director, Rates and Regulatory Affairs  
Kansas Gas Service  
a Division of ONE Gas, Inc.  
7421 West 129th Street  
Overland Park, Kansas 66213  
(913) 319 8662  
janet.buchanan@onegas.com

Lyn Leet  
Manager, Commercial Projects  
Kansas Gas Service  
a Division of ONE Gas, Inc.  
7421 West 129th Street  
Overland Park, Kansas 66213  
(913) 319 8662  
Lyn.leet@onegas.com

## III. DESCRIPTION OF THE TRANSACTION

3. In general, Southern Star currently provides service to served domestic meters pursuant to provisions of right-of-way easements with those customers and certificates of public convenience and necessity issued by the Federal Energy Regulatory Commission ("FERC") under Section 7(c) of the Natural Gas Act.

4. Southern Star<sup>1</sup> has been engaged in an ongoing effort to eliminate ownership and operation of domestic meters on its system.<sup>2</sup> Transferring domestic meters (and their facilities) to

---

<sup>1</sup> Southern Star is a natural gas company, as defined in Section 1(b) of the Natural Gas Act of 1938, as amended, and is engaged in the business of transporting and storing natural gas in interstate commerce under authorizations granted by the Federal Energy Regulatory Commission ("FERC").

<sup>2</sup> Abbreviated Application for Abandonment By Sale, FERC Docket CP23-484, p. 1 (May 22, 2023) (SSC FERC Application).

qualified local distribution companies allows Southern Star to focus on operating its interstate transmission system, while ensuring affected customers continue to receive safe and reliable service from a qualified operator.<sup>3</sup>

5. Southern Star's system includes nearly two thousand domestic meters, which were generally installed as a condition to secure pipeline easements. Most of Southern Star's domestic meters (and their corresponding service obligations) were incurred prior to restructuring of the natural gas industry (i.e., when Southern Star's primary business included the bundled sale of natural gas).<sup>4</sup>

6. Southern Star renders service to its domestic meters through either: (1) facilities owned, operated, and maintained by Southern Star, or (2) through local distribution companies, whose responsibility for the operation and maintenance of domestic meters varies by state and company.<sup>5</sup>

7. Southern Star sought, and received, FERC regulatory approval to abandon by sale 1,042 domestic meters located throughout Kansas to Kansas Gas Service. The assets are being sold pursuant to an Asset Purchase Agreement ("APA"), dated December 16, 2022, which is attached hereto as **CONFIDENTIAL Exhibit 2** and adopted by reference herein.<sup>6</sup> The facilities being acquired by Kansas Gas Service include all facilities, pipes, meters, distribution lines, and other equipment and installations which are located on the downstream side of Southern Star's

---

<sup>3</sup> See *id.*

<sup>4</sup> See *id.* at p.3.

<sup>5</sup> See *id.* at p. 4.

<sup>6</sup> Pursuant to K.S.A. 66-1220a and K.A.R. 82-1-221a, Kansas Gas Service respectfully requests the Commission deem the APA confidential. The APA contains the terms and conditions of acquiring certain public utility assets, which if publicly revealed at this time could reveal areas of the Company's strategic focus and impair the Company's ability to pursue other possible facility purchases. For reference, treating the APA as confidential is similar to how Southern Star presented the APA in its FERC Filing. See SSC FERC Application, PRIV Volume II.

transmission lines and connected to the Domestic Customers' service and yard lines.<sup>7</sup> The assets to be acquired by Kansas Gas Service under the APA include:

- a. Facilities (pipes, meters, distribution lines, other equipment and installations of every kind and nature which are on the downstream side of the first above-ground valve located over the transmission lines of Southern Star);
- b. Customer Accounts, including Special Arrangement Taps;
- c. Account Records;
- d. Technical Information; and
- e. Easements.

8. 194 of the Domestic Customers are served directly by Southern Star and will become new Kansas Gas Service customers. These customers, and the facilities used to serve them, will be transferred to Kansas Gas Service. 848 of the Domestic Customers are current Kansas Gas Service customers. The facilities used to serve these customers will be transferred to Kansas Gas Service. Kansas Gas Service currently uses its firm contracts with Southern Star (TS813 and TA13280) to transport gas to the 848 Domestic Customers. Southern Star will continue to transport the natural gas to serve the 1,042 Domestic Customers, and contracts TS813 and TA13280 will be amended to include the totality of the 1,042 Domestic Customers' transportation requirements.

9. Kansas Gas Service is purchasing the Facilities for \$1,400 per domestic meter, which is the approximate net book value of the Facilities.

10. The APA is subject to several conditions prior to closing the transaction. Among the conditions precedent to closing are:

- a. The Commission's order granting to Kansas Gas Service the certificates of convenience and necessity as set forth in this Application;

---

<sup>7</sup> These types of customers are routinely referred to interchangeably as "farm tap," "irrigation," or "domestic" customers. For consistency in this Application, Kansas Gas Service refers to these customers jointly as "Domestic Customers."

- b. The Commission's order authorizing Kansas Gas Service to continue serving and charging the Domestic Customers pursuant to Kansas Gas Service's applicable tariffs and rates;
- c. The Commission's order approving this Application, including a holding that the purchase price be included in Kansas Gas Service's rate base;
- d. Southern Star receiving all FERC approvals relating to the sale of the Facilities to Kansas Gas Service, which Southern Star received on August 3, 2023, in FERC Docket No. CP23-484-000

#### **IV. THE FUTURE OF DOMESTIC CUSTOMERS**

11. At the time Kansas Gas Service and Southern Star executed the APA, the specific customers and facilities subject to the transaction were being finalized. Section 6.02(a)(iii) of the APA requires Schedule 1.01(a), as mutually agreed to by Kansas Gas Service and Southern Star, to be delivered at closing. Schedule 1.01(a) is a listing of which facilities are subject to the transaction.

12. Kansas Gas Service and Southern Star have agreed to the specific facilities subject to this transaction, which allow for the remaining schedules to be populated. **Exhibit 3** attached to this Application and incorporated herein by reference, identifies in total the Domestic Customers (and their associated facilities) subject to this transaction by meter number.

13. A copy of the APA is to be delivered at closing. Upon receiving regulatory approval from the Commission, completed copies of the APA's schedules will be incorporated into the APA at closing.

14. Upon closing, all Domestic Customers outlined in **Exhibit 3** will be Kansas Gas Service customers with clear Kansas Gas Service certificates of convenience and necessity. For

the remaining Domestic Customers served by Kansas Gas Service *not* acquired under the APA, another Kansas natural gas public utility intends to acquire them.<sup>8</sup>

15. As part of this Application, Kansas Gas Service is seeking a customer-specific certificate of convenience and necessity to serve the meters identified in **Exhibit 3**. Customer-specific certificates are required to serve the 194 Domestic Customers currently directly served by Southern Star and who will be transferred to Kansas Gas Service. Likewise, given the history of Domestic Customers and their service, having one proceeding definitively establish a certificate of convenience and necessity for all 1,042 Domestic Customers will aid in the future service to these customers.

16. The meters and locations of impacted customers are attached to this Application as **CONFIDENTIAL Exhibits 4A and 4B**.<sup>9</sup> The new Domestic Customers are listed in **CONFIDENTIAL Exhibit 4A**, and the existing Kansas Gas Service Domestic Customers are listed in **CONFIDENTIAL Exhibit 4B**. The customers are located throughout the state. To the extent that any of the customers/addresses are located within the service territory certificated to another natural gas utility, Kansas Gas Service's request for a certificate of convenience and necessity is specifically limited to only serving the meters and locations impacted by the APA and does not include a request to serve any other existing or future customer that might be located within the service territory currently certificated to another natural gas utility.

---

<sup>8</sup>Concurrently with Kansas Gas Service's acquisition of the Southern Star Facilities that are the subject matter of this Application, which are used to serve the list of farm tap and irrigation customers attached to the Asset Purchase Agreement, another Kansas natural gas public utility is planning to purchase from Southern Star the facilities currently used to serve approximately 438 Southern Star farm taps that Kansas Gas Service currently provides service to under its tariffs and rates. In conjunction with this utility's future application to the KCC for approval of its acquisition of the Southern Star facilities used to serve those 438 farm taps and for approval of a customer specific certificate of convenience and necessity to serve those 438 farm taps, Kansas Gas Service will file an application for approval to cease and abandon service to those 438 farm tap customers upon the Commission's approval of the utility's application. *See*, Confidential Letter, attached to this Application as **CONFIDENTIAL Exhibit 5**.

<sup>9</sup> Exhibits 4A and 4B are designated as confidential because they contain customer information.

17. Kansas Gas Service is seeking permission to provide natural gas service to the meters and locations that are the subject matter of the purchase and this Application per Kansas Gas Service's current applicable Commission approved tariffs and rates. As mentioned above, Kansas Gas Service is currently providing natural gas service to 848 Domestic Customers. For these customers, there will be no change in rates upon the approval of this Application.

18. Kansas Gas Service's request to include the purchase price of the facilities in its rate base is reasonable. The purchase price is based upon the approximate net book value of the Domestic Customer facilities. Kansas Gas Service does not foresee any immediate improvements that will need to be made to the acquired facilities, and therefore, does not consider any surcharge on the customers that are the subject matter of this Application to be necessary.

19. Since Kansas Gas Service already provides natural gas service to the majority of the Domestic Customers, no change in its gas supply contracts will be necessary. Since the customers involved are served from irrigation and farm taps directly connected to Southern Star's interstate transmission pipeline and are not located in reasonable proximity to Kansas Gas Service's distribution system, Kansas Gas Service will continue to rely upon Southern Star's pipeline to provide natural gas service to the customers. Kansas Gas Service has included provisions in the APA that in the event Southern Star would retire or abandon any portion of its pipeline used to serve the customers/addresses listed in this Application, that Southern Star would be responsible for paying for the customers impacted by the retirement or abandonment of the pipeline to convert to an alternative source of fuel.

20. Kansas Gas Service will be sending a notice of this Application to each new Domestic Customer. Such notice will require that the customers submit any comments to the Commission no later than November 30, 2023. A copy of the Notice and a verified certificate of

mailing will be late-filed as **Exhibit 7**.

21. In support of its Application, Kansas Gas Service submits it is well qualified to provide natural gas service to the Domestic Customers subject to this Application. Kansas Gas Service is the largest natural gas utility in the state of Kansas. Kansas Gas Service's financial strength and managerial expertise in the gas retail distribution business assures that its acquisition of the facilities which serve the irrigation and farm tap customers will be in the public interest. Kansas Gas Service has provided efficient and sufficient service to the majority of the Domestic Customers since Southern Star and its predecessor were required to exit its merchant market nearly 20 years ago.

#### **V. PRIOR AND CURRENT SERVICE TO DOMESTIC CUSTOMERS**

22. Kansas Gas Service has provided natural gas service under its applicable tariffs and rates to hundreds of Southern Star's Domestic Customers since Southern Star's predecessor, Williams Gas Pipelines Central, Inc. ("Williams"), was ordered by FERC to unbundle its merchant business in accordance with FERC Order 636. In fact, the business relationship for operating and maintaining certain Domestic Customers predates FERC's restructuring of the natural gas markets. **Exhibit 6** contains a series of letter agreements between Kansas Gas Service and Southern Star's predecessors memorializing the business relationship between the companies and its impact on Domestic Customers.

23. On March 30, 2001, in Docket No. 99-GIMG-068-GIG, the Commission issued Order No. 24 in its investigation into ad valorem tax refunds from interstate pipelines. During this docket, Williams asserted it had not made any retail sales in Kansas since May 18, 1994.<sup>10</sup>

---

<sup>10</sup> Special Appearance of Williams Gas Pipeline Central, Inc., in Opposition to Staff's Request for a General Investigation to Establish General Policies for Distribution of Kansas Ad Valorem Tax Refunds, Docket No. 99-GIMG-068-GIG (Aug. 28, 1998).



As noted in the settlement,

Williams has tariffs and certificates currently on file with the KCC that are no longer in use by Williams and are obsolete, except as they may apply for purposes of determining proper recipients of notices and for possible distribution of settlement moneys as contemplated herein. The KCC's order approving this Stipulated Settlement Agreement will constitute an order canceling and abandoning all of Williams' certificates and tariffs on file with the KCC on the Effective Date, reserving the right to use them solely for the described excepted purposes.<sup>11</sup>

24. Order No. 24, among other things, directed Commission Staff to cancel William's certificates of convenience and necessity. On January 28, 2004, in Docket Nos. 113,727-U (i.e., 96-WMNG-016-COA) and 89-WMNG-328-TAR, the Commission issued an Order cancelling Williams' KCC issued certificate of convenience and necessity and its direct sale tariffs.

25. As shown above, Domestic Customers take service directly from interstate transmission pipelines with either the transmission pipeline or local distribution company providing utility service. In this case, 194 Domestic Customers receive service directly from Southern Star, and 848 Domestic Customers receive service from Kansas Gas Service through a tap located on Southern Star's facilities. The Application in this proceeding will not only allow 1,042 Domestic Customers to continue receiving natural gas service, but will clarify which entity is responsible for ongoing service obligations.

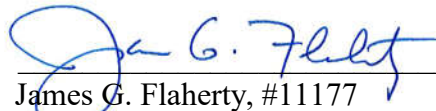
WHEREFORE, Kansas Gas Service requests the Commission issue an order that (1) grants it a customer specific certificate of convenience and necessity pursuant to K.S.A. 66-131 to provide natural gas service to the customers/addresses listed in **CONFIDENTIAL Exhibits 4A and 4B** of this Application; (2) approves Kansas Gas Service's purchase of Southern Star's facilities as set forth

---

<sup>11</sup> Joint Motion for Approval of Stipulated Settlement Agreement and Notice of Hearing Thereon, Docket No. 99-GIMG-068-GIG, p. 12 (Feb. 23, 2001).

in the APA attached to this Application as **CONFIDENTIAL Exhibit 2**; (3) allows Kansas Gas Service to include the purchase price paid for said facilities be included in Kansas Gas Service's rate base for recovery from its customers; (4) allows Kansas Gas Service to provide service and charge the customers/addresses listed in **CONFIDENTIAL Exhibits 4A and 4B** based upon the applicable Kansas Gas Service tariffs and rates; and (5) for such other relief found to be necessary by the Commission as just and reasonable in this matter.

Respectfully submitted,



---

James G. Flaherty, #11177  
ANDERSON & BYRD, LLP  
216 S. Hickory ~ P.O. Box 17  
Ottawa, Kansas 66067  
(785) 242-1234, telephone  
(785) 242-1279, facsimile  
[jflaherty@andersonbyrd.com](mailto:jflaherty@andersonbyrd.com)

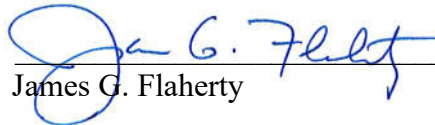
Robert Elliott Vincent, #26028  
KANSAS GAS SERVICE  
7421 West 129<sup>th</sup> Street  
Overland Park, Kansas 66213-2634  
(913) 319-8615, telephone  
(913) 319-8622, facsimile  
[robert.vincent@onegas.com](mailto:robert.vincent@onegas.com)

Attorneys for Kansas Gas Service, a Division of ONE  
Gas, Inc.

**VERIFICATION**

STATE OF KANSAS  
COUNTY OF FRANKLIN, ss:

James G. Flaherty, of lawful age, being first duly sworn on oath, states: That he is an attorney for Kansas Gas Service, a Division of ONE Gas, Inc., and is duly authorized to make this affidavit; that he has read the foregoing Application, knows the contents thereof; and that the facts set forth therein are true and correct.

  
\_\_\_\_\_  
James G. Flaherty

SUBSCRIBED AND SWORN to before me this 5<sup>th</sup> day of September, 2023.



  
\_\_\_\_\_

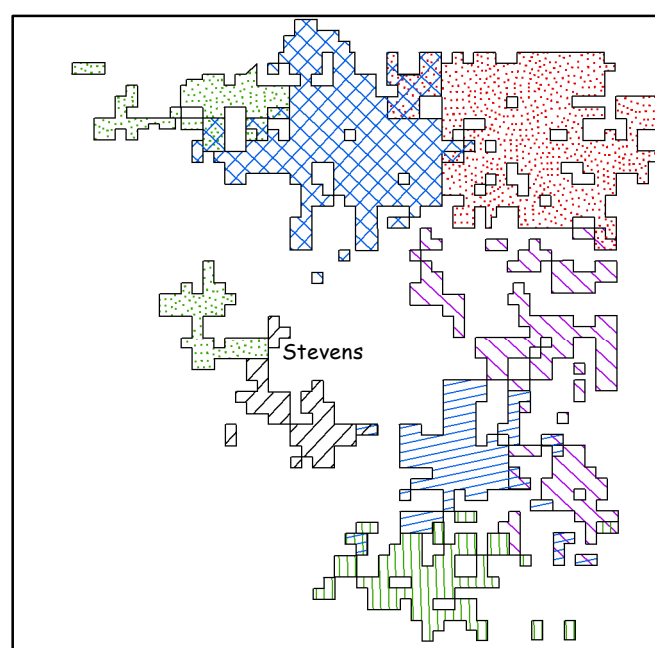
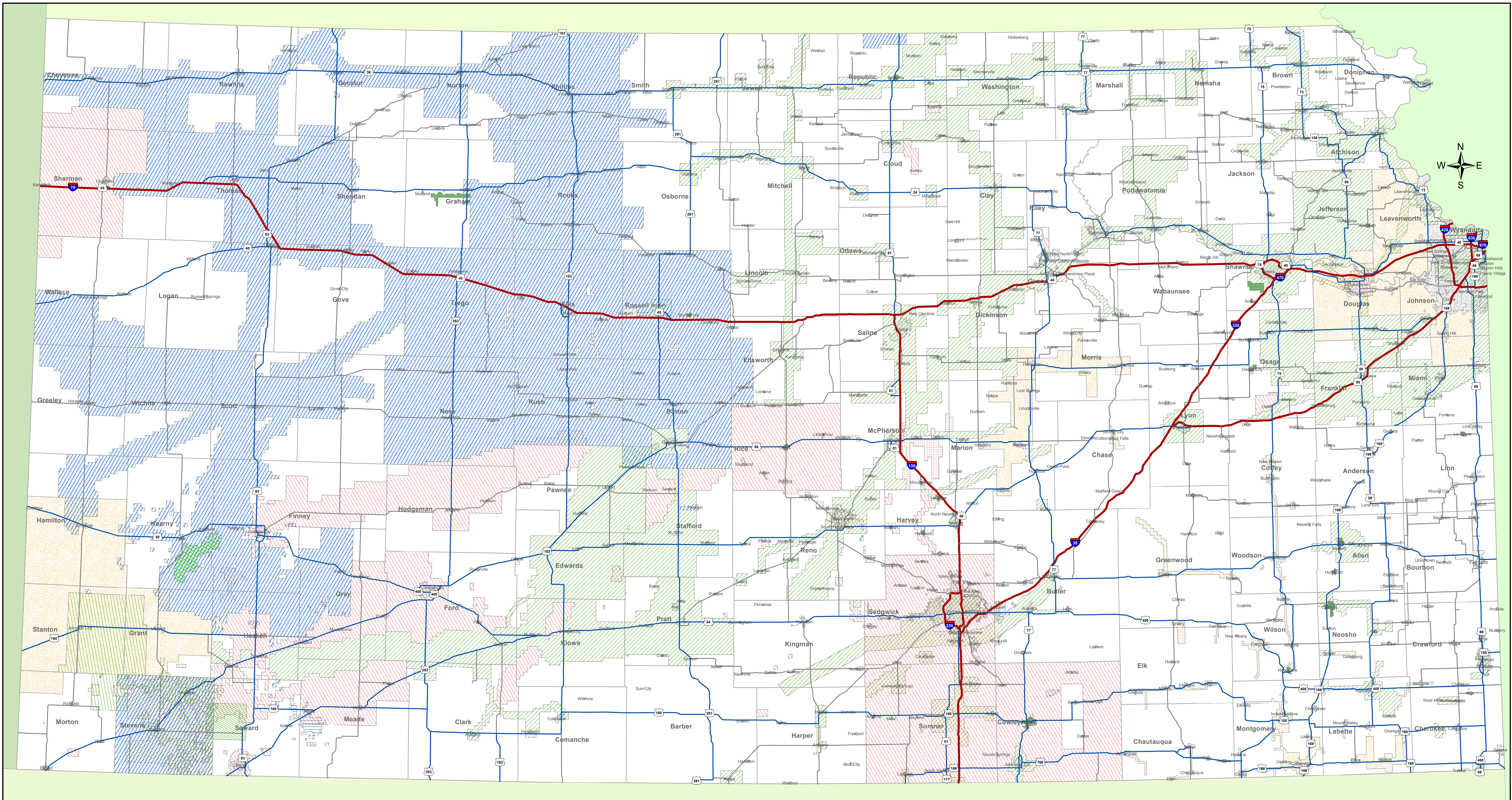
Notary Public

Appointment/Commission Expires:

# EXHIBIT 1

## MAP





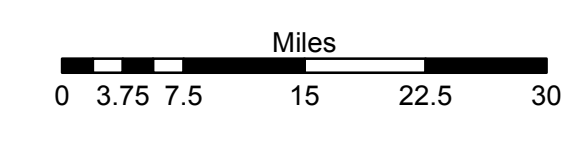
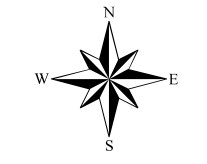
- STEVENS COUTY SWKIs**
- SWKI SPIKES NORTH, INC.
  - SWKI STEVENS E.C., INC.
  - SWKI STEVENS HSW, INC.
  - SWKI STEVENS LOWER SOUTH EAST, INC.
  - SWKI STEVENS N.E., INC.
  - SWKI STEVENS NORTH, INC.
  - SWKI STEVENS SOUTH EAST, INC.

Cities and Towns

**Gas Company**

- 4 COUNTY ENERGY NPU, LLC
- AMERICAN ENERGIES GAS SERVICE, LLC.
- ARMILLO NATURAL GAS, INC.
- ATMOS ENERGY
- BLACK HILLS ENERGY
- KANSAS GAS SERVICE
- KEARNY COUNTY GAS IRRIGATORS ASSN.
- MIAMI PIPELINE COMPANY, INC.
- MIDWEST ENERGY, INC.
- MUNICIPAL OR OTHER SYSTEM
- PLAINS PRODUCERS ASSOCIATIONS, INC.
- SWKI SEWARD WEST CENTRAL, INC.
- SWKIs in STEVENS COUNTY

**CERTIFIED AREAS OF NATURAL GAS PUBLIC UTILITIES IN KANSAS**





**CONFIDENTIAL**

**EXHIBIT 2**

**Asset Purchase Agreement  
between Kansas Gas Service,  
a Division of ONE Gas, Inc.  
And Southern Star Central  
Pipeline, Inc.**

# Exhibit 3

## Meter List

Southern Star Central Gas Pipeline, Inc.  
Kansas Domestic Meters to Be Abandoned  
by Sale in the Market AreaDocket No. CP23-\_\_\_\_-000  
Exhibit Z1

Meter Number	Location	Sales Service Provider	Rate Area	State	County	Line Segment	Section	Quarter Section	Township	Range
7228	7228	SSCGP	Market	KS	Anderson	496	36	NW/ NE/4	20S	019E
7736	7736	SSCGP	Market	KS	Montgomery	117	33	SW/4	33S	014E
8313	8313	SSCGP	Market	KS	Anderson	496	02	NE/4 SE/4	21S	019E
8314	8314	SSCGP	Market	KS	Anderson	496	36	NE/4 NW/4	20S	019E
8315	8315	SSCGP	Market	KS	Anderson	496	35	NE/4 NE/4	20S	019E
8777	290301	SSCGP	Market	KS	Wilson	177	19	SE/4	30S	016E
8783	84021	SSCGP	Market	KS	Allen	495	09	NE/4 NW/4	26S	018E
10001	560001	SSCGP	Market	KS	Leavenworth	195	01	SE/C SE/4	10S	021E
11155	435501	SSCGP	Market	KS	Leavenworth	195	19	NW/4	09S	022E
114109	710	KGS	Market	KS	Atchison	90	12		6S	20E
114111	710	KGS	Market	KS	Leavenworth	195	13		10S	21E
114118	710	KGS	Market	KS	Leavenworth	450	08	SE/4 SW/4	09S	22E
140129	710	KGS	Market	KS	Jewell	265	16	NE/4 NW/4	01S	007W
140131	710	KGS	Market	KS	Brown	90	35	SE/4 SE/4	01S	015E
140132	710	KGS	Market	KS	Brown	90	35	NE/4 SE/4	01S	015E
140135	710	KGS	Market	KS	Brown	90	07	SE/4 SE/4	01S	017E
140136	710	KGS	Market	KS	Brown	90	28	SW/4 NW/4	01S	017E
140137	710	KGS	Market	KS	Brown	90	33	SW/4 NW/4	01S	017E
140138	710	KGS	Market	KS	Brown	90	29	SE/4	01S	017E
140139	710	KGS	Market	KS	Brown	90	33	SW/4 SW/4	01S	017E
140143	710	KGS	Market	KS	Brown	90	02	SE/4 SE/4	02S	015E
140144	710	KGS	Market	KS	Brown	90	22	N 100 A NW/4	02S	015E
140145	710	KGS	Market	KS	Brown	90	27	NW/4 SW/4	02S	015E
140146	710	KGS	Market	KS	Brown	90	11	NW/4 NW/4	02S	015E
140147	710	KGS	Market	KS	Brown	90	09	NE/4 NW/4	02S	015E
140148	710	KGS	Market	KS	Brown	90	09	NE/4 NE/4	02S	015E
140154	710	KGS	Market	KS	Brown	90	10	W/2X NW/4	02S	015E
140156	710	KGS	Market	KS	Brown	90	08	NW/4 NW/4	02S	016E
140157	710	KGS	Market	KS	Brown	90	08	NE/4 NW/4	02S	016E
140161	710	KGS	Market	KS	Brown	90	04	NW/4 NW/4	02S	017E
140162	710	KGS	Market	KS	Brown	90	09	NW/4 SW/4	02S	017E
140164	710	KGS	Market	KS	Brown	90	33	NE/4 NE/4	02S	017E
140165	710	KGS	Market	KS	Brown	90	04	SW/4 SW/4	02S	017E
140168	710	KGS	Market	KS	Brown	90	21	NE/4	02S	017E
140170	710	KGS	Market	KS	Brown	90	08	NW/4 NW/4	02S	017E
140173	710	KGS	Market	KS	Jewell	265	20	NW/4 NW/4	03S	006W
140174	710	KGS	Market	KS	Jewell	265	18	SW/4 SE/4	03S	007W
140175	710	KGS	Market	KS	Jewell	265	17	SW/4 SW/4	03S	007W
140176	710	KGS	Market	KS	Jewell	265	15	SW/4 SW/4	03S	007W
140177	710	KGS	Market	KS	Jewell	265	22	NW/4 NW/4	03S	007W
140178	710	KGS	Market	KS	Jewell	265	17	SE/4 SW/4	03S	007W
140181	710	KGS	Market	KS	Jewell	265	13	SE/4 SE/4	03S	008W
140183	710	KGS	Market	KS	Jewell	265	21	SE/4 NE/4	03S	008W
140184	710	KGS	Market	KS	Jewell	265	35	NE/4 SE/4	03S	008W
140185	710	KGS	Market	KS	Jewell	265	13	SE/4 SW/4	03S	008W
140186	710	KGS	Market	KS	Jewell	265	11	SW/4 SW/4	03S	009W
140187	710	KGS	Market	KS	Jewell	265	02	NW/4 NW/4	03S	009W



Southern Star Central Gas Pipeline, Inc.  
 Kansas Domestic Meters to Be Abandoned  
 by Sale in the Market Area

Docket No. CP23-\_\_\_\_-000  
 Exhibit Z1

Meter Number	Location	Sales Service Provider	Rate Area	State	County	Line Segment	Section	Quarter Section	Township	Range
140189	710	KGS	Market	KS	Jewell	265	21	NW/4 NE/4	03S	009W
140190	710	KGS	Market	KS	Jewell	265	13	SW/4 SW/4	03S	009W
140192	710	KGS	Market	KS	Jewell	265	10	NE/4 NE/4	03S	010W
140193	710	KGS	Market	KS	Jewell	265	19	NW/4 NE/4	03S	010W
140194	710	KGS	Market	KS	Jewell	265	20	NW/4 NW/4	03S	010W
140197	710	KGS	Market	KS	Jewell	265	20	NE/4 NE/4	03S	010W
140199	710	KGS	Market	KS	Smith	265	20	NE/4 NW/4	03S	011W
140200	710	KGS	Market	KS	Smith	265	24	NW/4 NW/4	03S	011W
140202	710	KGS	Market	KS	Smith	265	23	NE/4 NE/4	03S	012W
140206	710	KGS	Market	KS	Brown	90	16	NE/4	03S	017E
140208	710	KGS	Market	KS	Jewell	265	25	N/2 NW/4	04S	008W
140210	710	KGS	Market	KS	Jewell	265	25	SW/4 SE/4	04S	008W
140214	710	KGS	Market	KS	Jewell	265	14	SE/4 SE/4	04S	008W
140219	710	KGS	Market	KS	Brown	90	26	SW/4 SW/4	04S	017E
140220	710	KGS	Market	KS	Brown	90	25	SW/4 SW/4	04S	017E
140222	710	KGS	Market	KS	Brown	90	30	SE/4 SW/4	04S	018E
140223	710	KGS	Market	KS	Brown	90	32	SE/4 NE/4	04S	018E
140225	710	KGS	Market	KS	Brown	90	33	SW/4 SE/4	04S	018E
140226	710	KGS	Market	KS	Brown	90	32	NE/4 NW/4	04S	018E
140227	710	KGS	Market	KS	Jewell	265	01	SW/4 SW/4	05S	008W
140229	710	KGS	Market	KS	Jewell	265	11	NE/4 SE/4	05S	008W
140232	710	KGS	Market	KS	Jackson	90	26	NW/4 SE/4	05S	016E
140233	710	KGS	Market	KS	Atchison	90	09	NW/4 NW/4	05S	017E
140235	710	KGS	Market	KS	Atchison	90	18	SW/4	05S	017E
140236	710	KGS	Market	KS	Atchison	90	08	SW/4 SW/4	05S	017E
140237	710	KGS	Market	KS	Atchison	90	18	NE/4 NE/4	05S	017E
140238	710	KGS	Market	KS	Atchison	90	08	NE/4	05S	017E
140239	710	KGS	Market	KS	Atchison	90	17	NW/4 NW/4	05S	017E
140240	710	KGS	Market	KS	Atchison	90	13	NE/4 NE/4	05S	018E
140241	710	KGS	Market	KS	Atchison	90	27	SW/4 NW/4	05S	019E
140242	710	KGS	Market	KS	Atchison	90	28	NE/4 NE/4	05S	019E
140244	710	KGS	Market	KS	Atchison	90	26	SW/4	05S	019E
140245	710	KGS	Market	KS	Atchison	90	21	SW/4 NW/4	05S	019E
140247	710	KGS	Market	KS	Mitchell	265	21	NW/4 NW/4	06S	008W
140250	710	KGS	Market	KS	Mitchell	265	17	SW/4 SE/4	06S	008W
140251	710	KGS	Market	KS	Mitchell	265	02	SW/4 SW/4	06S	008W
140252	710	KGS	Market	KS	Mitchell	265	27	SW/4 NE/4	06S	009W
140253	710	KGS	Market	KS	Mitchell	265	22	NE/4 NW/4	06S	009W
140254	710	KGS	Market	KS	Mitchell	265	27	NE/4 NE/4	06S	009W
140256	710	KGS	Market	KS	Osborne	265	20	SE/4 SE/4	06S	011W
140257	710	KGS	Market	KS	Osborne	265	19	SE/4 SE/4	06S	011W
140259	710	KGS	Market	KS	Osborne	265	23	NE/4 NW/4	06S	011W
140260	710	KGS	Market	KS	Osborne	265	30	SW/4 NW/4	06S	011W
140261	710	KGS	Market	KS	Osborne	265	22	SW/4 NW/4	06S	011W
140262	710	KGS	Market	KS	Osborne	265	21	NE/4 SE/4	06S	011W
140264	710	KGS	Market	KS	Osborne	265	21	NE/4 SE/4	06S	011W
140267	610	KGS	Market	KS	Jackson	90	34	SW/4 SW/4	06S	015E

Southern Star Central Gas Pipeline, Inc.  
Kansas Domestic Meters to Be Abandoned  
by Sale in the Market Area

Docket No. CP23-\_\_\_\_-000  
Exhibit Z1

Meter Number	Location	Sales Service Provider	Rate Area	State	County	Line Segment	Section	Quarter Section	Township	Range
140268	710	KGS	Market	KS	Jackson	90	24	SW/4 SE/4	06S	015E
140269	710	KGS	Market	KS	Jackson	90	34	NE/4 SE/4	06S	015E
140270	710	KGS	Market	KS	Jackson	90	34	SW/4 SE/4	06S	015E
140271	710	KGS	Market	KS	Jackson	90	25	SW/4 NW/4	06S	015E
140272	710	KGS	Market	KS	Jackson	90	35	NE/4 NW/4	06S	015E
140273	710	KGS	Market	KS	Jackson	90	26	SW/4 SE/4	06S	015E
140274	710	KGS	Market	KS	Jackson	90	35	NW/4	06S	015E
140275	710	KGS	Market	KS	Jackson	90	34	SW/4 SE/4	06S	015E
140277	710	KGS	Market	KS	Jackson	90	26	SE/4 SW/4	06S	015E
140278	710	KGS	Market	KS	Jackson	90	03	NW/4 NW/4	06S	016E
140279	710	KGS	Market	KS	Jackson	90	04	NE/4 SE/4	06S	016E
140280	710	KGS	Market	KS	Jackson	90	09	NE/4 NW/4	06S	016E
140282	710	KGS	Market	KS	Jackson	90	03	NW/4 NW/4	06S	016E
140288	710	KGS	Market	KS	Atchison	90	11	SE/4	06S	020E
140289	710	KGS	Market	KS	Atchison	90	11	SE/4	06S	020E
140292	710	KGS	Market	KS	Atchison	90	12	NW/4	06S	020E
140293	710	KGS	Market	KS	Atchison	90	12	SW/4 NE/4	06S	020E
140294	710	KGS	Market	KS	Atchison	90	12	NE/4 SE/4	06S	020E
140295	710	KGS	Market	KS	Atchison	90	12	NE/4SE/4	06S	020E
140296	710	KGS	Market	KS	Atchison	90	12	NE/4NE/4SW/4	06S	020E
140297	710	KGS	Market	KS	Atchison	90	12	NE/4 SW/4	06S	020E
140300	710	KGS	Market	KS	Atchison	90	11	NW/4 SE/4	06S	020E
140301	710	KGS	Market	KS	Atchison	90	11	NW/4 SE/4	06S	020E
140304	710	KGS	Market	KS	Atchison	90	11	NW/4 SW/4	06S	020E
140305	710	KGS	Market	KS	Atchison	90	10	NE/4 SE/4	06S	020E
140306	710	KGS	Market	KS	Atchison	90	11	NW/4 SE/4	06S	020E
140308	710	KGS	Market	KS	Atchison	90	13	N 1/2 NE/4	06S	020E
140309	710	KGS	Market	KS	Atchison	90	11	NE/4 SE/4	06S	020E
140310	710	KGS	Market	KS	Atchison	90	03	SE/4	06S	020E
140312	710	KGS	Market	KS	Atchison	90	11	NW/4 NW/4 SE	06S	020E
140313	710	KGS	Market	KS	Atchison	90	12	SE/4 NW/4	06S	020E
140314	710	KGS	Market	KS	Atchison	90	12	NW/4 SE/4	06S	020E
140315	710	KGS	Market	KS	Atchison	90	12	NE/4 SE/4	06S	020E
140316	710	KGS	Market	KS	Atchison	90	29	NW/4	06S	021E
140317	710	KGS	Market	KS	Atchison	90	19	NW/4 NE/4	06S	021E
140318	710	KGS	Market	KS	Atchison	90	19	NW/4 SE/4	06S	021E
140319	710	KGS	Market	KS	Atchison	90	18	SW/4 SW/4	06S	021E
140323	710	KGS	Market	KS	Atchison	90	32	SE/4 SE/4	06S	021E
140324	710	KGS	Market	KS	Atchison	90	04	NE/4 SW/4	06S	021E
140325	710	KGS	Market	KS	Atchison	90	18	NW/4 NW/4	06S	021E
140327	710	KGS	Market	KS	Mitchell	265	06	NE/4 NE/4	07S	007W
140329	710	KGS	Market	KS	Mitchell	265	35	SW/4 SW/4	07S	008W
140332	710	KGS	Market	KS	MITCHELL	265	26		7S	8W
140335	710	KGS	Market	KS	Jackson	90	03	NW/4 NE/4	07S	015E
140337	710	KGS	Market	KS	Leavenworth	90	36	NE/4 SW/4	07S	021E
140339	710	KGS	Market	KS	Mitchell	265	02	NW/4	08S	008W
140346	710	KGS	Market	KS	Leavenworth	250	15	SW/4 NW/4	08S	022E

Southern Star Central Gas Pipeline, Inc.  
Kansas Domestic Meters to Be Abandoned  
by Sale in the Market Area

Docket No. CP23-\_\_\_\_-000  
Exhibit Z1

Meter Number	Location	Sales Service Provider	Rate Area	State	County	Line Segment	Section	Quarter Section	Township	Range
140347	710	KGS	Market	KS	Leavenworth	90	07	SW/4 SE/4	08S	022E
140350	710	KGS	Market	KS	Leavenworth	195	31	NE/4 NW/4	08S	022E
140352	710	KGS	Market	KS	Leavenworth	195	30	SE/4 SW/4	08S	022E
140353	710	KGS	Market	KS	Leavenworth	250	01	SE/4 SE/4	08S	021E
140355	710	KGS	Market	KS	Leavenworth	195	19	E 1/2	08S	022E
140356	710	KGS	Market	KS	Leavenworth	195	30	W/2 E/2 SW/4	08S	022E
140357	710	KGS	Market	KS	Leavenworth	195	29	SW/4 NE/4	08S	022E
140358	710	KGS	Market	KS	Leavenworth	195	29	SW/C NW/4	08S	022E
140359	710	KGS	Market	KS	Leavenworth	90	06	SW/4 SW/4	08S	022E
140360	710	KGS	Market	KS	Leavenworth	195	29	NW/4 NW/4	08S	022E
140361	710	KGS	Market	KS	Leavenworth	195	18	SE/4 SE/4	08S	022E
140362	710	KGS	Market	KS	Leavenworth	90	20	SW/4 NW/4	08S	022E
140363	710	KGS	Market	KS	Leavenworth	195	30	SE/4 NE/4	08S	022E
140367	710	KGS	Market	KS	Leavenworth	250	18	NW/4 NE/4	08S	022E
140368	710	KGS	Market	KS	Leavenworth	250	17	NE/4 SE/4	08S	022E
140369	710	KGS	Market	KS	Mitchell	265	27	SE/4 SE/4	09S	008W
140370	710	KGS	Market	KS	Jefferson	180	15	NW/4 NW/4	09S	018E
140371	710	KGS	Market	KS	Jefferson	180	24	NE/4 SW/4	09S	018E
140372	710	KGS	Market	KS	Jefferson	180	20	NW/4 NW/4	09S	018E
140373	710	KGS	Market	KS	Jefferson	180	20	N 1/2 NE/4	09S	018E
140375	710	KGS	Market	KS	Jefferson	180	29	SW/4 SW/4	09S	019E
140376	710	KGS	Market	KS	Jefferson	180	32	NE/4 NW/4	09S	019E
140377	710	KGS	Market	KS	Leavenworth	195	12	SE/4 NE/4	09S	021E
140379	710	KGS	Market	KS	Leavenworth	195	12	SE/4 NW/4	09S	021E
140380	710	KGS	Market	KS	Leavenworth	195	24	E 1/2 NW/4	09S	021E
140381	710	KGS	Market	KS	Leavenworth	195	01	SE/4 SE/4	09S	021E
140382	710	KGS	Market	KS	Leavenworth	195	26	SE/4 SE/4	09S	021E
140383	710	KGS	Market	KS	Leavenworth	195	35	SW/4 SE/4	09S	021E
140384	710	KGS	Market	KS	Leavenworth	195	13	NW/4 SE/4	09S	021E
140385	710	KGS	Market	KS	Leavenworth	195	26	NE/4 NE/4	09S	021E
140387	710	KGS	Market	KS	Leavenworth	195	24	E 1/2 NW/4	09S	021E
140389	710	KGS	Market	KS	Leavenworth	195	24	SW/4 SW/4	09S	021E
140390	710	KGS	Market	KS	Leavenworth	195	24	SW/4 SW/4	09S	021E
140391	710	KGS	Market	KS	Leavenworth	195	25	NW/4 NW/4	09S	021E
140392	710	KGS	Market	KS	Leavenworth	195	12	SW/4 SW/4	09S	022E
140394	710	KGS	Market	KS	Leavenworth	195	18	N 1/2 NE/4	09S	022E
140395	710	KGS	Market	KS	Leavenworth	195	18	S/2 NE/4	09S	022E
140398	710	KGS	Market	KS	Leavenworth	195	05	NW/4 SW/4	09S	022E
140401	710	KGS	Market	KS	Leavenworth	195	08	NW/4 SW/4	09S	022E
140402	710	KGS	Market	KS	Leavenworth	195	05	NW/4 SW/4	09S	022E
140403	710	KGS	Market	KS	Leavenworth	195	12	SE/4 SW/4	09S	022E
140404	710	KGS	Market	KS	Leavenworth	195	12	SW/4 SW/4	09S	022E
140406	710	KGS	Market	KS	Leavenworth	195	30	NW/4 NW/4	09S	022E
140407	710	KGS	Market	KS	Leavenworth	195	18	SE/4 NE/4	09S	022E
140409	710	KGS	Market	KS	Leavenworth	195	10	SW/4 SE/4	09S	022E
140410	710	KGS	Market	KS	Leavenworth	195	08	NE/4 NW/4 SW/4	09S	022E
140413	710	KGS	Market	KS	Leavenworth	195	19	SW/4 SW/4	09S	022E

Southern Star Central Gas Pipeline, Inc.  
Kansas Domestic Meters to Be Abandoned  
by Sale in the Market AreaDocket No. CP23-\_\_\_\_-000  
Exhibit Z1

Meter Number	Location	Sales Service Provider	Rate Area	State	County	Line Segment	Section	Quarter Section	Township	Range
140416	710	KGS	Market	KS	Leavenworth	195	07	SE/4 SE/4	09S	022E
140417	710	KGS	Market	KS	Lincoln	265	32	SE/4	10S	006W
140420	710	KGS	Market	KS	Lincoln	265	14	NW/4 NW/4	10S	008W
140421	710	KGS	Market	KS	Lincoln	265	03	NE/4 NE/4	10S	008W
140422	710	KGS	Market	KS	Jefferson	180	20	S/2 NE/4	10S	017E
140425	710	KGS	Market	KS	Jefferson	180	21	SW/4 NW/4	10S	017E
140427	710	KGS	Market	KS	Jefferson	180	30	SW/4 SE/4	10S	017E
140428	710	KGS	Market	KS	Jefferson	180	30	SE/4 SE/4	10S	017E
140429	710	KGS	Market	KS	Jefferson	180	31	S/2 NW/4	10S	017E
140434	710	KGS	Market	KS	Jefferson	180	18	NW/4 SE/4	10S	017E
140436	710	KGS	Market	KS	Jefferson	180	18	NE/4 SW/4	10S	017E
140437	710	KGS	Market	KS	Jefferson	180	31	SE/4 NW/4	10S	017E
140439	710	KGS	Market	KS	Jefferson	180	20	NW/4 NW/4	10S	017E
140440	710	KGS	Market	KS	Leavenworth	170	13	SE/4 NE/4	10S	020E
140442	710	KGS	Market	KS	Leavenworth	170	03	NW/4	10S	020E
140443	710	KGS	Market	KS	Leavenworth	170	03	N/2	10S	020E
140444	710	KGS	Market	KS	Leavenworth	170	33	SE/4 SE/4	10S	021E
140445	710	KGS	Market	KS	Leavenworth	195	35	W/2 NW/4	10S	021E
140448	710	KGS	Market	KS	Leavenworth	170	28	NW/4	10S	021E
140449	710	KGS	Market	KS	Leavenworth	170	28	SW/4 NW/4	10S	021E
140451	710	KGS	Market	KS	Leavenworth	195	26	SE/4 NE/4	10S	021E
140452	710	KGS	Market	KS	Leavenworth	170	29	NE/4 NE/4	10S	021E
140457	710	KGS	Market	KS	Leavenworth	195	22	SE/4 SE/4	10S	021E
140458	710	KGS	Market	KS	Leavenworth	195	13	SE/4 NE/4	10S	021E
140459	710	KGS	Market	KS	Leavenworth	170	20	S/2 S20	10S	021E
140460	710	KGS	Market	KS	Leavenworth	195	5	SW/4 SW/4	11S	021E
140461	710	KGS	Market	KS	Leavenworth	195	12	N/2 NE/4	10S	021E
140463	710	KGS	Market	KS	Leavenworth	195	13	SE/4 NE/4	10S	021E
140464	710	KGS	Market	KS	Leavenworth	170	18	NW/4 SW/4	10S	021E
140465	710	KGS	Market	KS	Leavenworth	195	13	W/2	10S	021E
140467	710	KGS	Market	KS	Leavenworth	170	28	NE/4 SW/4	10S	021E
140468	710	KGS	Market	KS	Leavenworth	195	22	NE/4 SE/4	10S	021E
140469	710	KGS	Market	KS	Leavenworth	170	20	SE/4 SW/4	10S	021E
140470	710	KGS	Market	KS	Leavenworth	195	35	NW/4 NW/4	10S	021E
140474	710	KGS	Market	KS	Leavenworth	195	26	NE/4 NE/4	10S	021E
140475	710	KGS	Market	KS	Leavenworth	195	13	E/2 SE/4	10S	021E
140476	710	KGS	Market	KS	Leavenworth	195	26	NW/4	10S	021E
140477	710	KGS	Market	KS	Leavenworth	195	26	NW/4	10S	021E
140478	710	KGS	Market	KS	Leavenworth	195	24	SE/4 NW/4	10S	021E
140479	710	KGS	Market	KS	Leavenworth	195	13	SW/4 SE/4	10S	021E
140481	710	KGS	Market	KS	Leavenworth	195	13	SE/4 SE/4	10S	021E
140482	710	KGS	Market	KS	Leavenworth	195	34	NW/4 SW/4	10S	021E
140484	710	KGS	Market	KS	Leavenworth	195	24	NE/4 NE/4	10S	021E
140485	710	KGS	Market	KS	Leavenworth	195	24	NW/C NE/4	10S	021E
140486	710	KGS	Market	KS	Leavenworth	170	19	NE/4 NE/4	10S	021E
140498	710	KGS	Market	KS	Lincoln	265	06	NW/4 NW/4	11S	007W
140500	710	KGS	Market	KS	Cherokee	260	20	NW/4 NW/4	33S	025E

Southern Star Central Gas Pipeline, Inc.  
Kansas Domestic Meters to Be Abandoned  
by Sale in the Market AreaDocket No. CP23-\_\_\_\_-000  
Exhibit Z1

Meter Number	Location	Sales Service Provider	Rate Area	State	County	Line Segment	Section	Quarter Section	Township	Range
140502	710	KGS	Market	KS	Russell	265	35	SW/4	11S	011W
140503	710	KGS	Market	KS	Russell	265	09	NW/4	11S	012W
140504	710	KGS	Market	KS	Cherokee	225	07	SE/4 NE/4	35S	025E
140509	710	KGS	Market	KS	Jefferson	180	12	SE/4 SW/4	11S	016E
140510	710	KGS	Market	KS	Shawnee	180	11	SW/4 SE/4	11S	016E
140511	710	KGS	Market	KS	Jefferson	180	12	SE/4 SE/4	11S	016E
140516	710	KGS	Market	KS	Cherokee	260	28	SE/4 NE/4	33S	022E
140519	710	KGS	Market	KS	Shawnee	180	08	SW/4 SE/4	11S	016E
140520	710	KGS	Market	KS	Cherokee	260	29	NE/4 NE/4	33S	023E
140521	710	KGS	Market	KS	Jefferson	180	12	SE/4 SE/4	11S	016E
140523	710	KGS	Market	KS	Shawnee	180	11	SW/4 SE/4	11S	016E
140527	710	KGS	Market	KS	Jefferson	180	16	NW/4 SW/4	11S	017E
140530	710	KGS	Market	KS	Jefferson	180	08	SE/4 SW/4	11S	017E
140531	710	KGS	Market	KS	Jefferson	180	18	NE/4	11S	017E
140532	710	KGS	Market	KS	Douglas	180	36	NW/4	11S	017E
140533	710	KGS	Market	KS	Cherokee	260	02	SW/4 NW/4	34S	025E
140535	710	KGS	Market	KS	Douglas	180	30	SW/4	11S	018E
140536	710	KGS	Market	KS	Jefferson	180	17	NE/4	11S	017E
140537	710	KGS	Market	KS	Jefferson	180	07	SW/4 SW/3	11S	017E
140538	710	KGS	Market	KS	Shawnee	180	34	W/2 SE/4	11S	017E
140541	710	KGS	Market	KS	Shawnee	180	31	SE/4 SW/4	11S	017E
140542	710	KGS	Market	KS	Shawnee	180	31	NE/4 SW/4	11S	017E
140543	710	KGS	Market	KS	Jefferson	180	25		11S	017E
140544	710	KGS	Market	KS	Shawnee	180	34	E/2 SE/4	11S	017E
140549	710	KGS	Market	KS	Douglas	180	35	SE/4	11S	017E
140550	710	KGS	Market	KS	Jefferson	180	20	W/2 SE/4	11S	018E
140551	710	KGS	Market	KS	Cherokee	260	24	SE/4 NW/4	33S	023E
140552	710	KGS	Market	KS	Jefferson	180	21	W/2 SW/4	11S	018E
140561	710	KGS	Market	KS	Leavenworth	195	30	S/2 NW/4	11S	021E
140562	710	KGS	Market	KS	Leavenworth	195	04	SE/4 NW/4	11S	021E
140563	710	KGS	Market	KS	Cherokee	260	18	W/2 SW/4	34S	025E
140564	710	KGS	Market	KS	Cherokee	260	19	NE/4 SE/4	33S	025E
140568	710	KGS	Market	KS	Leavenworth	195	05	SE/4 SW/4	11S	021E
140569	710	KGS	Market	KS	Leavenworth	195	05	SE/4 SE/4	11S	021E
140570	710	KGS	Market	KS	Cherokee	260	18	SW/4 NW/4	34S	025E
140571	710	KGS	Market	KS	Lincoln	265	26	NW/4 NW/4	12S	008W
140572	710	KGS	Market	KS	Lincoln	265	01	NE/4 NW/4	12S	008W
140573	710	KGS	Market	KS	Lincoln	265	26	SW/4 SW/4	12S	008W
140574	710	KGS	Market	KS	Lincoln	265	23	NW/4 NW/4	12S	008W
140575	710	KGS	Market	KS	Lincoln	265	01	SW/4 NW/4	12S	009W
140576	710	KGS	Market	KS	Lincoln	265	06	SE/4 SE/4	12S	009W
140577	710	KGS	Market	KS	Lincoln	265	01	SW/4 SE/4	12S	010W
140579	710	KGS	Market	KS	Lincoln	265	04	SE/4 SE/4	12S	010W
140583	710	KGS	Market	KS	Cherokee	260	05	NW/4 NE/4	32S	024E
140584	710	KGS	Market	KS	Shawnee	180	01	SW/C SE/4	12S	016E
140587	710	KGS	Market	KS	Shawnee	180	01	SE/4 SW/4	12S	016E
140591	710	KGS	Market	KS	Shawnee	180	01	NE/4 NE/4	12S	016E



Southern Star Central Gas Pipeline, Inc.  
Kansas Domestic Meters to Be Abandoned  
by Sale in the Market Area

Meter Number	Location	Sales Service Provider	Rate Area	State	County	Line Segment	Section	Quarter Section	Township	Range
140593	710	KGS	Market	KS	Osborne	265	30	NW/4 NE/4	06S	011W
140594	710	KGS	Market	KS	Shawnee	180	01	NW/4 NW/4 NE/4	12S	016E
140596	710	KGS	Market	KS	Shawnee	180	29	W/2 SE/4	12S	017E
140603	710	KGS	Market	KS	Shawnee	180	29	NE/4 SE/4	12S	017E
140604	710	KGS	Market	KS	Shawnee	180	17	NE/4 NE/4	12S	017E
140605	710	KGS	Market	KS	Shawnee	180	28	SE/4 NE/4	12S	017E
140607	710	KGS	Market	KS	Mitchell	265	10	NE/4 SE/4	08S	008W
140609	710	KGS	Market	KS	Shawnee	180	22	NW/4 NW/4	12S	017E
140610	710	KGS	Market	KS	Shawnee	180	07	NW/4 NW/4	12S	017E
140616	710	KGS	Market	KS	Mitchell	265	22	NE/4 NW/4	06S	009W
140618	710	KGS	Market	KS	Douglas	180	28	SE/4 SW/4	12S	018E
140619	710	KGS	Market	KS	Douglas	180	33	NW/4 NW/4	12S	018E
140620	710	KGS	Market	KS	Douglas	180	03	SW/4 SW/4	12S	018E
140622	710	KGS	Market	KS	Douglas	180	33	NE/4 NW/4	12S	018E
140623	710	KGS	Market	KS	Douglas	180	28	S/2 SW/4	12S	018E
140626	710	KGS	Market	KS	Douglas	180	29	SE/4 SW/4	12S	018E
140628	710	KGS	Market	KS	Douglas	180	33	NE/4	12S	018E
140629	710	KGS	Market	KS	Douglas	180	10	NE/4 SW/4	12S	018E
140630	710	KGS	Market	KS	Douglas	180	34	NW/4 SE/4	12S	018E
140631	710	KGS	Market	KS	Douglas	180	24	NE/4 SE/4	12S	018E
140632	710	KGS	Market	KS	Douglas	180	14	NE/4 SW/4	12S	018E
140633	710	KGS	Market	KS	Douglas	180	30	NE/4 SE/4	12S	019E
140642	710	KGS	Market	KS	Douglas	195	33	NW/4 NW/4	12S	020E
140648	710	KGS	Market	KS	Leavenworth	195	10	SE/4 SE/4	12S	020E
140649	710	KGS	Market	KS	Douglas	195	21	SE/4 SE/4	12S	020E
140652	710	KGS	Market	KS	Douglas	195	21	SE/4 NE/4	12S	020E
140653	710	KGS	Market	KS	Leavenworth	195	11	SW/4 NW/4	12S	020E
140655	710	KGS	Market	KS	Leavenworth	195	15	W/2 SW/4	12S	020E
140656	710	KGS	Market	KS	Douglas	195	16	SE/4 SE/4	12S	020E
140658	710	KGS	Market	KS	Leavenworth	195	15	SE/4 NW/4	12S	020E
140660	710	KGS	Market	KS	Douglas	195	33	NE/4 NW/4	12S	020E
140670	710	KGS	Market	KS	Johnson	190	36	SW/4 SE/4	12S	023E
140674	710	KGS	Market	KS	Wilson	498	11	NE/4 NW/4	28S	016E
140678	710	KGS	Market	KS	Johnson	190	27	NW/4 SW/4	12S	024E
140682	710	KGS	Market	KS	Johnson	190	23	SE/4 SW/4	12S	024E
140683	710	KGS	Market	KS	Johnson	190	19	SE/4 NE/4	12S	024E
140684	710	KGS	Market	KS	Johnson	190	23	NE/4 SW/4	12S	024E
140685	710	KGS	Market	KS	Johnson	190	19	SE/4 NE/4	12S	024E
140686	710	KGS	Market	KS	Johnson	190	20	SW/4 SW/4	12S	024E
140687	710	KGS	Market	KS	Johnson	190	07	NE/4 NE/4	12S	024E
140689	710	KGS	Market	KS	Johnson	190	20	SW/4 SW/4	12S	024E
140690	710	KGS	Market	KS	Johnson	190	07	SE/4 SE/4	12S	024E
140691	710	KGS	Market	KS	Montgomery	495	01	NE/4 NW/4	32S	016E
140694	710	KGS	Market	KS	Lyon	140	34		20S	011E
140695	710	KGS	Market	KS	Johnson	190	06	NE/4 NE/4	12S	024E
140697	710	KGS	Market	KS	Johnson	190	05	NW/4 SW/4	12S	024E
140698	710	KGS	Market	KS	Johnson	190	07	NE/4 NE/4	12S	024E

Southern Star Central Gas Pipeline, Inc.  
 Kansas Domestic Meters to Be Abandoned  
 by Sale in the Market Area

Docket No. CP23-\_\_\_\_-000  
 Exhibit Z1

Meter Number	Location	Sales Service Provider	Rate Area	State	County	Line Segment	Section	Quarter Section	Township	Range
140699	710	KGS	Market	KS	Johnson	190	07	SE/4 SE/4	12S	024E
140701	710	KGS	Market	KS	Greenwood	140	14	NW/4 NE/4	22S	011E
140709	710	KGS	Market	KS	Johnson	190	23	SW/4 SE/4	12S	024E
140710	710	KGS	Market	KS	Johnson	190	30	NE/4 SE/4	12S	024E
140711	710	KGS	Market	KS	Johnson	190	27		12S	024E
140716	710	KGS	Market	KS	Douglas	180	01	NE/4 NW/4	13S	018E
140727	710	KGS	Market	KS	Lyon	493	16	SW/4SE/44	19S	013E
140728	710	KGS	Market	KS	Douglas	180	08	NE/4	13S	019E
140730	710	KGS	Market	KS	Lyon	140	03	NW/4	21S	011E
140731	710	KGS	Market	KS	Douglas	195	19	SE/4 SW/4	13S	020E
140732	710	KGS	Market	KS	Douglas	195	31	NE/4 NW/4	13S	020E
140734	710	KGS	Market	KS	Douglas	195	08	SE/4 SE/4	13S	020E
140736	710	KGS	Market	KS	Douglas	195	31	NE/4 SW/4	13S	020E
140737	710	KGS	Market	KS	Douglas	195	31	SE/4 SW/4	13S	020E
140738	710	KGS	Market	KS	Lyon	140	34	NW/4	17S	013E
140741	710	KGS	Market	KS	Douglas	195	31	S/2 NW/4	13S	020E
140743	710	KGS	Market	KS	Johnson	190	35	SE4/SW/4	13S	22E
140767	710	KGS	Market	KS	Ellsworth	265	26	NW/4 NW/4	14S	008W
140768	710	KGS	Market	KS	Ellsworth	265	23	NW/4 NW/4	14S	008W
140770	710	KGS	Market	KS	Douglas	195	18	NW/4 NE/4	14S	020E
140772	710	KGS	Market	KS	Douglas	195	31	NW/4 NW/4	14S	020E
140773	710	KGS	Market	KS	Douglas	195	06	N/2 SW/4	14S	020E
140775	710	KGS	Market	KS	Douglas	195	06	NE/4 NW/4	14S	020E
140776	710	KGS	Market	KS	Douglas	195	18	SE/4 NW/4	14S	020E
140778	710	KGS	Market	KS	Douglas	195	30	SW/4 NW/4	14S	020E
140779	710	KGS	Market	KS	Douglas	195	30	NW/4 SW/4	14S	020E
140780	710	KGS	Market	KS	Douglas	195	18	NE/4 NW/4	14S	020E
140782	710	KGS	Market	KS	Douglas	195	18	NE/4 SW/4	14S	020E
140783	710	KGS	Market	KS	Douglas	195	19	NE/4 NW/4	14S	020E
140784	710	KGS	Market	KS	Douglas	195	18	NE/4 SW/4	14S	020E
140785	710	KGS	Market	KS	Douglas	195	18	SE/4 NW/4	14S	020E
140786	710	KGS	Market	KS	Douglas	195	31	NE/4 NW/4	14S	020E
140788	710	KGS	Market	KS	Johnson	195	36	E/2 SE/4	14S	021E
140792	710	KGS	Market	KS	Johnson	190	27	NW/4 NW/4	14S	022E
140794	710	KGS	Market	KS	Johnson	190	22	SW/4 SW/4	14S	022E
140795	710	KGS	Market	KS	Johnson	190	21	SE/4 SW/4	14S	022E
140796	710	KGS	Market	KS	Johnson	190	16	SE/4 SE/4	14S	022E
140797	710	KGS	Market	KS	Johnson	190	32	NW/4 NW/4	14S	022E
140799	710	KGS	Market	KS	Johnson	190	28	NE/4 NE/4	14S	022E
140800	710	KGS	Market	KS	Johnson	190	29	NE/4 SW/4	14S	022E
140805	710	KGS	Market	KS	Johnson	190	21	SW/4 NE/4	14S	022E
140806	710	KGS	Market	KS	Johnson	190	10	N/2 SW/4	14S	22e
140809	710	KGS	Market	KS	Johnson	190	21	SE/4 NW/4	14S	022E
140810	710	KGS	Market	KS	Johnson	190	21	SW/4 SW/4	14S	022E
140812	710	KGS	Market	KS	Johnson	190	29	NE/4 NE/4	14S	022E
140813	710	KGS	Market	KS	Johnson	190	10	SE/4 SE/4	14S	022E
140814	710	KGS	Market	KS	Johnson	190	21	SE/4 SW/4	14S	022E

Southern Star Central Gas Pipeline, Inc.  
Kansas Domestic Meters to Be Abandoned  
by Sale in the Market Area

Meter Number	Location	Sales Service Provider	Rate Area	State	County	Line Segment	Section	Quarter Section	Township	Range
140816	710	KGS	Market	KS	Ellsworth	265	03	SE/4 NE/4	15S	008W
140817	710	KGS	Market	KS	Ellsworth	265	14	NW/4 SW/4	15S	008W
140818	710	KGS	Market	KS	Ellsworth	265	11	NW/4 NW/4	15S	008W
140819	710	KGS	Market	KS	Ellsworth	265	02	NW/4 NW/4	15S	008W
140820	710	KGS	Market	KS	Ellsworth	265	23	NW/4 SW/4	15S	008W
140821	710	KGS	Market	KS	Osage	140	08	NW/4	15S	017E
140822	710	KGS	Market	KS	Douglas	195	07	NW/4 SW/4	15S	020E
140823	710	KGS	Market	KS	Douglas	195	18	SW/4 SE/4	15S	020E
140824	710	KGS	Market	KS	Franklin	195	30	NW/4 NW/4	15S	020E
140825	710	KGS	Market	KS	Douglas	195	06	NE/4 NW/4	15S	020E
140827	710	KGS	Market	KS	Douglas	195	05	NE/4 SE/4	15S	020E
140829	710	KGS	Market	KS	Douglas	195	07	SE/4 SW/4	15S	020E
140830	710	KGS	Market	KS	Douglas	195	06	SW/4 SW/4	15S	020E
140831	710	KGS	Market	KS	Franklin	195	30	SW/4 SW/4	15S	020E
140832	710	KGS	Market	KS	Franklin	195	31	NW/4	15S	020E
140833	710	KGS	Market	KS	Douglas	195	06	SW/4 NW/4	15S	020E
140834	710	KGS	Market	KS	Johnson	190	01	W/2 SW/4	15S	021E
140835	710	KGS	Market	KS	Franklin	190	21	NE/4 NW/4	15S	021E
140840	710	KGS	Market	KS	Douglas	190	15	NW/4 SW/4	15S	021E
140842	710	KGS	Market	KS	Douglas	190	16	SW/4 SE/4	15S	021E
140850	710	KGS	Market	KS	Franklin	190	20	SW/4	15S	021E
140851	710	KGS	Market	KS	Franklin	190	31	SW/4 NW/4	15S	021E
140855	710	KGS	Market	KS	Johnson	140	06	NW/4 NW/4	15S	022E
140856	710	KGS	Market	KS	Johnson	140	06	SW/4 SW/4	15S	022E
140857	710	KGS	Market	KS	Ellsworth	265	35	SW/4 SW/4	16S	008W
140859	710	KGS	Market	KS	Osage	140	34	SW/4 SW/4	16S	017E
140861	710	KGS	Market	KS	Osage	140	16	SE/4	16S	017E
140863	710	KGS	Market	KS	Franklin	496	31	SE/4 SE/4	16S	020E
140864	710	KGS	Market	KS	Franklin	190	02	SW/4 SW/4	16S	020E
140865	710	KGS	Market	KS	Franklin	496	32	SW/4 SW/4	16S	020E
140866	710	KGS	Market	KS	Franklin	190	16	NE/4 NE/4	16S	020E
140867	710	KGS	Market	KS	Franklin	140	29	SE/4 SE/4	16S	020E
140870	710	KGS	Market	KS	Franklin	195	19	SE/4 SE/4	16S	020E
140871	710	KGS	Market	KS	Franklin	195	07	SE/4 SW/4	16S	020E
140875	710	KGS	Market	KS	Franklin	195	19	NW/4 NE/4	16S	020E
140877	710	KGS	Market	KS	Franklin	496	32	SW/4 NW/4	16S	020E
140878	710	KGS	Market	KS	Franklin	195	06	NW/4	16S	020E
140879	710	KGS	Market	KS	Franklin	496	31	NE/4 SE/4	16S	020E
140880	710	KGS	Market	KS	Franklin	496	28	NW/4 NE/4	16S	020E
140881	710	KGS	Market	KS	Franklin	496	32	NW/4 SW/4	16S	020E
140882	710	KGS	Market	KS	Franklin	235	26	NW/4 NW/4	16S	020E
140886	710	KGS	Market	KS	Osage	140	03	SW/4 SW/4	17S	017E
140887	710	KGS	Market	KS	Franklin	190	01	SW/4 NW/4	16S	020E
140890	710	KGS	Market	KS	Franklin	496	32	NW/4 NW/4	16S	020E
140891	710	KGS	Market	KS	Franklin	496	29	W/2 SE/4	16S	020E
140892	710	KGS	Market	KS	Franklin	117	30	NE/4 SE/4	16S	020E
140893	710	KGS	Market	KS	Franklin	140	36		17S	017E



Southern Star Central Gas Pipeline, Inc.  
Kansas Domestic Meters to Be Abandoned  
by Sale in the Market AreaDocket No. CP23-\_\_\_\_-000  
Exhibit Z1

Meter Number	Location	Sales Service Provider	Rate Area	State	County	Line Segment	Section	Quarter Section	Township	Range
140894	710	KGS	Market	KS	Franklin	140	27	NE/4 NE/4	16S	020E
140895	710	KGS	Market	KS	Franklin	235	26	NE/4 NW/4	16S	020E
140898	710	KGS	Market	KS	Miami	235	26	NW/4 NE/4	16S	021E
140900	710	KGS	Market	KS	Franklin	235	27	NW/4	16S	021E
140901	710	KGS	Market	KS	Miami	235	25	NW/4 NW/4	16S	021E
140902	710	KGS	Market	KS	Franklin	235	29	NW/4 NW/4	16S	021E
140903	710	KGS	Market	KS	Franklin	235	27	NW/4 NE/4	16S	021E
140904	710	KGS	Market	KS	Miami	235	27	NW/4 NE/4	16S	022E
140910	710	KGS	Market	KS	Miami	235	24	S/2 SW/4	16S	023E
140911	710	KGS	Market	KS	Miami	235	24	SW/4 SE/4	16S	023E
140914	710	KGS	Market	KS	Miami	235	29	NW/4 NW/4	16S	023E
140915	710	KGS	Market	KS	Miami	235	28	N/2 NE/4	16S	023E
140917	710	KGS	Market	KS	Miami	235	29	NW/4 NE/4	16S	023E
140920	710	KGS	Market	KS	Miami	235	20	SE/4 NW/4	16S	024E
140923	710	KGS	Market	KS	Miami	235	22	NW/4 NW/4	16S	024E
140924	140924	SSCGP	Market	KS	Bourbon	95	21	NE/4 NW/4	26S	024E
140925	710	KGS	Market	KS	Brown	90	33	SW/4 SW/4	01S	017E
140927	710	KGS	Market	KS	Brown	90	08	NW/4 NW/4	02S	017E
140928	710	KGS	Market	KS	Jackson	90	03	NE/4 NW/4	07S	015E
140929	710	KGS	Market	KS	Jefferson	180	33	SW/4 NE/4	08S	018E
140930	710	KGS	Market	KS	Miami	235	11	SE/4 SW/4	16S	025E
140932	710	KGS	Market	KS	Miami	235	15	E/2 NW/4	16S	025E
140935	710	KGS	Market	KS	Jackson	90	26	NE/4 NE/4	05S	016E
140937	710	KGS	Market	KS	Brown	90	33	NW/4 NW/4	04S	018E
140938	710	KGS	Market	KS	Brown	90	15	NW/4 NW/4	04S	017E
140941	710	KGS	Market	KS	Ellsworth	265	23	SW/4 SW/4	17S	008W
140942	710	KGS	Market	KS	Ellsworth	265	14	NW/4 NW/4	17S	008W
140946	710	KGS	Market	KS	Osage	140	18	NW/4 NW/4	17S	016E
140947	710	KGS	Market	KS	Osage	140	03	NW/4 SW/4	17S	017E
140951	710	KGS	Market	KS	Franklin	493	24	S/2 NE/4	17S	018E
140954	710	KGS	Market	KS	Franklin	493	12	SE/4 SW/4	17S	019E
140955	710	KGS	Market	KS	Franklin	493	15		17S	019E
140958	710	KGS	Market	KS	Franklin	493	15	SW/4 NW/4	17S	019E
140960	710	KGS	Market	KS	Franklin	493	19	NW/4 NE/4	17S	019E
140962	710	KGS	Market	KS	Franklin	300	16	NW/4 SW/4	17S	019E
140963	710	KGS	Market	KS	Franklin	496	07	SE/4 SE/4	17S	020E
140965	710	KGS	Market	KS	Franklin	496	17	NW/4 NW/4	17S	020E
140966	710	KGS	Market	KS	Franklin	495	19	NW/4 NE/4	17S	020E
140967	710	KGS	Market	KS	Franklin	496	08	SW/4 SW/4	17S	020E
140970	710	KGS	Market	KS	Franklin	496	19	SE/4 SE/4	17S	020E
140975	710	KGS	Market	KS	Franklin	496	18	SW/4 SE/4	17S	020E
140976	710	KGS	Market	KS	Franklin	496	07	S/2 SE/4	17S	020E
140977	710	KGS	Market	KS	Franklin	496	06	NE/4 NE/4	17S	020E
140979	710	KGS	Market	KS	Franklin	496	07	NW/4 SW/4	17S	020E
140981	710	KGS	Market	KS	Franklin	496	06	NE/4 NE/4	17S	020E
140983	710	KGS	Market	KS	Franklin	496	19	SE/4 NE/4	17S	020E
140990	710	KGS	Market	KS	Osage	493	17	NW/4 SW/4	18S	016E

Southern Star Central Gas Pipeline, Inc.  
Kansas Domestic Meters to Be Abandoned  
by Sale in the Market Area

Meter Number	Location	Sales Service Provider	Rate Area	State	County	Line Segment	Section	Quarter Section	Township	Range
140991	710	KGS	Market	KS	Osage	493	18	SW/4 SW/4	18S	016E
140993	710	KGS	Market	KS	Osage	300	11	NE/4	18S	016E
140996	710	KGS	Market	KS	Osage	493	05		18S	017E
140997	710	KGS	Market	KS	Franklin	117	13	NW/4 SW/4	18S	019E
141001	710	KGS	Market	KS	Franklin	496	25	S/2 SW/4	18S	019E
141002	710	KGS	Market	KS	Franklin	496	25	N/2 SW/4	18S	019E
141003	710	KGS	Market	KS	Franklin	496	13	SE/4 SW/4	18S	019E
141006	710	KGS	Market	KS	Franklin	496	07	NE/4 SE/4	18S	020E
141008	710	KGS	Market	KS	Franklin	496	32	NW/4 NW/4	18S	020E
141009	710	KGS	Market	KS	Franklin	496	18	NE/4 NE/4	18S	020E
141011	710	KGS	Market	KS	Franklin	496	19	SE/4 SE/4	18S	020E
141013	710	KGS	Market	KS	Franklin	496	32	NW/4 SW/4	18S	020E
141029	710	KGS	Market	KS	Lyon	493	16	SW/4 SE/4	19S	013E
141032	710	KGS	Market	KS	Franklin	496	02	SW/4 SE/4	19S	019E
141033	710	KGS	Market	KS	Anderson	117	35	NW/4 SW/4	19S	019E
141035	710	KGS	Market	KS	Anderson	496	26	SW/4 SW/4	19S	019E
141036	710	KGS	Market	KS	Franklin	496	11	NW/4 NE/4	19S	019E
141037	710	KGS	Market	KS	Anderson	496	26	NW/4 NE/4	19S	019E
141038	710	KGS	Market	KS	Anderson	496	35	SW/4 NE/4	19S	019E
141039	710	KGS	Market	KS	Anderson	496	31	SE/4 NW/4	19S	020E
141040	710	KGS	Market	KS	Franklin	496	06	NE/4 NE/4	19S	020E
141042	710	KGS	Market	KS	Anderson	496	30	SE/4 NW/4	19S	020E
141043	710	KGS	Market	KS	Franklin	496	07	SE/4 SW/4	19S	020E
141048	710	KGS	Market	KS	Franklin	496	07	SE/4 SE/4	19S	020E
141049	710	KGS	Market	KS	Anderson	496	30	SW/4 NE/4	19S	020E
141051	710	KGS	Market	KS	Franklin	496	07	NE/4 NE/4	19S	020E
141053	710	KGS	Market	KS	Marion	140	33	E/2 SE/4	20S	003E
141054	710	KGS	Market	KS	Marion	140	30	N/2 NE/4	20S	004E
141079	710	KGS	Market	KS	Lyon	140	28	SE/4 NW/4	20S	011E
141082	710	KGS	Market	KS	Lyon	140	33	S/2 SE/4	20S	011E
141085	710	KGS	Market	KS	Anderson	117	02	SW/4 NE/4	20S	019E
141086	710	KGS	Market	KS	Anderson	496	26	NE/4 SW/4	20S	019E
141089	710	KGS	Market	KS	Anderson	496	36	NE/4 NE/4	20S	019E
141097	710	KGS	Market	KS	Anderson	117	14	SW/4 NE/4	20S	019E
141098	710	KGS	Market	KS	Anderson	496	26	SE/4 NW/4	20S	019E
141099	710	KGS	Market	KS	Anderson	496	22	NW/4 NE/4	20S	019E
141101	710	KGS	Market	KS	Anderson	496	10	SW/4 NE/4	20S	019E
141102	710	KGS	Market	KS	Anderson	496	23	NE/4	20S	019E
141105	710	KGS	Market	KS	Anderson	496	26	SE/4 SE/4	20S	019E
141106	710	KGS	Market	KS	Anderson	496	23	NW/4 NE/4	20S	019E
141108	710	KGS	Market	KS	Anderson	496	06	NE/4 SW/4	20S	020E
141109	710	KGS	Market	KS	Anderson	496	31	SE/4 NW/4	20S	020E
141110	710	KGS	Market	KS	Montgomery	140	28	E/2 SE/4	21S	001E
141116	710	KGS	Market	KS	Johnson	190	18		12S	024E
141117	710	KGS	Market	KS	Johnson	190	18	SE/4 SE/4	12S	024E
141121	710	KGS	Market	KS	Lyon	140	03	W/2 NE/4	21S	011E
141123	710	KGS	Market	KS	Lyon	140	14	NW/4 NW/4	21S	011E

Southern Star Central Gas Pipeline, Inc.  
Kansas Domestic Meters to Be Abandoned  
by Sale in the Market AreaDocket No. CP23-\_\_\_\_-000  
Exhibit Z1

Meter Number	Location	Sales Service Provider	Rate Area	State	County	Line Segment	Section	Quarter Section	Township	Range
141124	710	KGS	Market	KS	Lyon	140	10	SE/4 SE/4	21S	011E
141126	710	KGS	Market	KS	Anderson	496	22	SE/4 NE/4	21S	019E
141129	141129	SSCGP	Market	KS	Anderson	50	34	SE/4 SE/4	21S	019E
141130	710	KGS	Market	KS	Anderson	496	02	SE/4 SW/4	21S	019E
141131	710	KGS	Market	KS	Anderson	496	03	SE/4 SE/4	21S	019E
141165	710	KGS	Market	KS	Greenwood	140	13	SW/4 NW/4	22S	011E
141174	710	KGS	Market	KS	Anderson	495	31	SW/4 SE/4	22S	019E
141178	710	KGS	Market	KS	Anderson	495	20	W/2 SW/4	22S	019E
141194	710	KGS	Market	KS	Allen	495	34	NE/4	23S	018E
141197	710	KGS	Market	KS	Allen	495	34	SE/4 SE/4	23S	018E
141199	710	KGS	Market	KS	Anderson	495	15	SE/4 SE/4	23S	018E
141200	710	KGS	Market	KS	Allen	495	34	SE/4 SW/4	23S	018E
141201	710	KGS	Market	KS	Allen	495	34	NE/4 NW/4	23S	018E
141208	710	KGS	Market	KS	Marion	140	35	NE/4	20S	003E
141221	710	KGS	Market	KS	Leavenworth	90	18		08S	022E
141222	710	KGS	Market	KS	Leavenworth	195	29	NW/4 NW/4	08S	022E
141224	710	KGS	Market	KS	Douglas	195	21	NE/4	12S	020E
141226	710	KGS	Market	KS	Allen	495	04	NW/4 NE/4	25S	018E
141229	710	KGS	Market	KS	Franklin	195	06	SE/4 NW/4	16S	020E
141230	710	KGS	Market	KS	Leavenworth	90	26	SE/4 SE/4	07S	021E
141231	710	KGS	Market	KS	Allen	495	04	N/2 NW/4	24S	018E
141236	710	KGS	Market	KS	Douglas	195	32	NE/4 NW/4	12S	019E
141237	710	KGS	Market	KS	Franklin	496	12	SW/4 SE/4	18S	019E
141244	710	KGS	Market	KS	Anderson	117	14	NW/4 NW/4	21S	019E
141245	710	KGS	Market	KS	Franklin	496	32	NW/4 SW/4	16S	020E
141265	710	KGS	Market	KS	Anderson	496	36	NW/4 NW/4	20S	019E
141268	710	KGS	Market	KS	Miami	235	16	NE/4 NE/4	16S	025E
141269	710	KGS	Market	KS	Franklin	117	32	NW/4 NE/4	16S	020E
141271	710	KGS	Market	KS	Brown	90	08	NE/4	02S	017E
141273	710	KGS	Market	KS	Allen	495	19	SW/4 SW/4	25S	018E
141275	710	KGS	Market	KS	Miami	235	17	NW/4	16S	025E
141277	710	KGS	Market	KS	Miami	235	11	SW/4 SW/4	16S	025E
141279	710	KGS	Market	KS	Miami	235	30	NW/4 NE/4	16S	022E
141280	710	KGS	Market	KS	Allen	495	31	SW/4 SW/4	25S	018E
141281	710	KGS	Market	KS	Allen	495	31		25S	018E
141282	710	KGS	Market	KS	Bourbon	95	35	NW/4 SW/4	25S	025E
141283	710	KGS	Market	KS	Bourbon	95	32	SW/4 SE/4	25S	025E
141284	710	KGS	Market	KS	Miami	235	23	SW/4 SE/4	16S	023E
141286	710	KGS	Market	KS	Bourbon	95	35	NE/4 NE/4	25S	025E
141290	710	KGS	Market	KS	Johnson	140	31	SE/4 SW/4	14S	022E
141291	710	KGS	Market	KS	Franklin	190	30	N/2 SE/4	15S	021E
141292	710	KGS	Market	KS	Johnson	140	11	W1/2 NE/4	15S	021E
141300	710	KGS	Market	KS	Johnson	190	36	E/2 SE/4	14S	021E
141305	710	KGS	Market	KS	Franklin	190	30	SE/4 NE/4	15S	021E
141309	710	KGS	Market	KS	Miami	235	18	NW/4 SW/4	16S	025E
141312	710	KGS	Market	KS	Allen	95	27	NW/4 NW/4	26S	021E
141313	710	KGS	Market	KS	Leavenworth	170	13	SE/4 NE/4	10S	020E

Southern Star Central Gas Pipeline, Inc.  
Kansas Domestic Meters to Be Abandoned  
by Sale in the Market Area

Meter Number	Location	Sales Service Provider	Rate Area	State	County	Line Segment	Section	Quarter Section	Township	Range
141321	710	KGS	Market	KS	Leavenworth	195	30	E/2 SW/4	08S	022E
141333	710	KGS	Market	KS	Miami	235	10	SW/4 SE/4	16S	025E
141335	710	KGS	Market	KS	Douglas	195	18	NE/4 SW/4	14S	020E
141337	710	KGS	Market	KS	Franklin	493	20	NW/4	17S	019E
141347	710	KGS	Market	KS	Miami	235	15	NE/4 NW/4	16S	025E
141349	710	KGS	Market	KS	Leavenworth	170	19	SE/4 NE/4	10S	021E
141350	710	KGS	Market	KS	Allen	498	36	NE/4 SE/4	26S	017E
141352	710	KGS	Market	KS	Allen	495	12	SW/4 SE/4	26S	017E
141355	710	KGS	Market	KS	Douglas	195	18	NE/4 NW/4	14S	020E
141356	710	KGS	Market	KS	Franklin	235	30	N/2 NE/4	16S	021E
141357	710	KGS	Market	KS	Leavenworth	195	35	W/2 NW/4	10S	021E
141359	710	KGS	Market	KS	Leavenworth	195	18	SE/4 SW/4	09S	022E
141361	710	KGS	Market	KS	Allen	495	06	NW/4 NE/4	26S	018E
141362	710	KGS	Market	KS	Franklin	140	20	NE/4 (NE&SE)	16S	020E
141363	710	KGS	Market	KS	Miami	235	21	NW/4	16S	024E
141365	710	KGS	Market	KS	Allen	495	31	NE/4	26S	018E
141367	710	KGS	Market	KS	Allen	495	32	NW/4 NW/4	26S	018E
141368	710	KGS	Market	KS	Miami	235	15	NW/4 NW/4	16S	025E
141369	710	KGS	Market	KS	Allen	95	29	NW/4 NE/4	26S	019E
141376	710	KGS	Market	KS	Miami	235	15	W/2 NE/4	16S	025E
141378	710	KGS	Market	KS	Douglas	195	19	SE/4 NW/4	14S	020E
141380	710	KGS	Market	KS	Labette	260	25	NE/4 NW/4	33S	018E
141387	710	KGS	Market	KS	Bourbon	95	22	SE/4 SW/4	26S	023E
141389	710	KGS	Market	KS	Labette	260	05	SE/4 NW/4	33S	021E
141390	710	KGS	Market	KS	Labette	495	08	SW/4 SW/4	31S	019E
141391	710	KGS	Market	KS	Neosho	495	21	NW/4 NW/4	30S	020E
141392	710	KGS	Market	KS	Bourbon	95	14	NE/4 NW/4	26S	024E
141396	710	KGS	Market	KS	Allen	117	34	SW/4 SW/4	28S	018E
141400	710	KGS	Market	KS	Bourbon	95	07	SW/4 NE/4	26S	025E
141403	710	KGS	Market	KS	Bourbon	95	04	NE/4 SE/4	26S	025E
141404	710	KGS	Market	KS	Allen	495	18	S/2 SW/4	25S	018E
141405	710	KGS	Market	KS	Bourbon	95	08	W/2 NE/4	26S	025E
141408	710	KGS	Market	KS	Bourbon	95	07	SW/4 NE/4	26S	025E
141409	710	KGS	Market	KS	Bourbon	95	03	NW/4 NW/4	26S	025E
141410	710	KGS	Market	KS	Allen	95	29	NW/4 NW/4	26S	020E
141411	710	KGS	Market	KS	Wilson	177	13	NE/4 NE/4	30S	016E
141414	710	KGS	Market	KS	Wilson	120	24	NW/4 NE/4	30S	016E
141415	710	KGS	Market	KS	Sedgwick	300	28	SE/4 SE/4	27S	002E
141417	710	KGS	Market	KS	Labette	495	09	SW/4	31S	018E
141428	710	KGS	Market	KS	Wilson	333	36	SE/4	27S	016E
141431	710	KGS	Market	KS	Neosho	495	23	NW/4 NW/4	27S	017E
141433	710	KGS	Market	KS	Neosho	117	23	NW/4 NW/4	27S	017E
141436	710	KGS	Market	KS	Neosho	495	35	NE/4	27S	017E
141438	710	KGS	Market	KS	Neosho	495	36	NW/4 NE/4	27S	017E
141439	710	KGS	Market	KS	Wilson	333	30	W/2 SE/4	27S	017E
141442	710	KGS	Market	KS	Wilson	498	29	NW/4 NW/4	27S	017E
141443	710	KGS	Market	KS	Neosho	495	01	NW/4 NW/4	27S	017E

Southern Star Central Gas Pipeline, Inc.  
Kansas Domestic Meters to Be Abandoned  
by Sale in the Market Area

Docket No. CP23-\_\_\_\_-000  
Exhibit Z1

Meter Number	Location	Sales Service Provider	Rate Area	State	County	Line Segment	Section	Quarter Section	Township	Range
141445	710	KGS	Market	KS	Wilson	495	22	SE/4 NE/4	27S	017E
141446	710	KGS	Market	KS	Neosho	495	04	SW/4 SW/4	27S	018E
141449	710	KGS	Market	KS	Neosho	495	36	NE/4 NE/4	27S	018E
141450	710	KGS	Market	KS	Neosho	495	05	SE/4 NW/4	27S	018E
141453	710	KGS	Market	KS	Neosho	495	05	SE/4	27S	018E
141456	710	KGS	Market	KS	Neosho	495	08	NE/4	27S	018E
141457	710	KGS	Market	KS	Neosho	495	05	NE/4 NW/4	27S	018E
141460	710	KGS	Market	KS	Neosho	495	05	SW/4 SE/4	27S	018E
141461	710	KGS	Market	KS	Allen	495	28	SE/4	23S	018E
141462	710	KGS	Market	KS	Cherokee	260	26	SE/4 SW/4	31S	024E
141467	710	KGS	Market	KS	Brown	90	11	NE/4 NW/4	02S	015E
141469	710	KGS	Market	KS	Brown	90	02	NE/4 NE/4	02S	015E
141470	710	KGS	Market	KS	Brown	90	22	SW/4 SW/4	02S	015E
141524	710	KGS	Market	KS	Jefferson	180	17	NE/4 NW/4	11S	017E
141533	710	KGS	Market	KS	Wilson	498	02	SW/4 SE/4	28S	016E
141534	710	KGS	Market	KS	Jefferson	180	12	SW/4 SE/4	11S	016E
141536	710	KGS	Market	KS	Shawnee	180	06	NE/4 NW/4	12S	017E
141537	710	KGS	Market	KS	Shawnee	180	6		12S	17E
141538	710	KGS	Market	KS	Wilson	495	28	SE/4 NE/4	28S	017E
141543	710	KGS	Market	KS	Shawnee	180	31	E/2 SW/4	11S	017E
141549	710	KGS	Market	KS	Shawnee	180	11	E/2 E/2	11S	016E
141556	710	KGS	Market	KS	Jefferson	180	29	NW/4	10S	017E
141557	710	KGS	Market	KS	Jefferson	180	30	NE/4 SE/4	10S	017E
141564	710	KGS	Market	KS	Jefferson	180	17	SW/4 SW/4	10S	017E
141597	710	KGS	Market	KS	Leavenworth	170	29	NW/4 NE/4	10S	021E
141598	710	KGS	Market	KS	Elk	498	15	SW/4 SW/4	29S	011E
141602	710	KGS	Market	KS	Elk	498	8	NW/4 NW/4	29S	013E
141605	710	KGS	Market	KS	Wilson	117	05	SE/3 SW/4	29S	017E
141606	710	KGS	Market	KS	Wilson	495	19	SE/4 SE/4	29S	017E
141608	710	KGS	Market	KS	Wilson	495	31	NW/4 NE/4	29S	017E
141609	710	KGS	Market	KS	Wilson	117	33	NW/4 NE/4	29S	017E
141610	710	KGS	Market	KS	Neosho	495	25	NW/4 SE/4	29S	017E
141615	710	KGS	Market	KS	Wilson	495	09	SW/4 SW/4	29S	017E
141616	710	KGS	Market	KS	Neosho	495	30	NW/4 SW/4	29S	018E
141619	710	KGS	Market	KS	Neosho	495	30	NW/4 SW/4	29S	018E
141620	710	KGS	Market	KS	Neosho	495	30	NE/4 SW/4	29S	018E
141624	710	KGS	Market	KS	Neosho	495	30	NW/4 SW/4	29S	018E
141626	710	KGS	Market	KS	Crawford	260	29	NW/4 NW/4	29S	024E
141629	710	KGS	Market	KS	Crawford	260	28	SW/4 SW/4	29S	024E
141630	710	KGS	Market	KS	Crawford	260	33	NE/4 NW/4	29S	024E
141651	710	KGS	Market	KS	Wilson	177	19	NW/4 NW/4	30S	016E
141653	710	KGS	Market	KS	Wilson	177	22	W/2 E/2 NW/4	30S	016E
141655	710	KGS	Market	KS	Wilson	177	18	SW/4 SE/4	30S	016E
141663	710	KGS	Market	KS	Wilson	177	24	NW/4 NW/4	30S	016E
141667	710	KGS	Market	KS	Neosho	495	31	NE/4 NE/4	30S	020E
141668	710	KGS	Market	KS	Neosho	117	32	NW/4	30S	020E
141669	710	KGS	Market	KS	Neosho	495	29	SW/4 SW/4	30S	020E



Southern Star Central Gas Pipeline, Inc.  
Kansas Domestic Meters to Be Abandoned  
by Sale in the Market Area

Meter Number	Location	Sales Service Provider	Rate Area	State	County	Line Segment	Section	Quarter Section	Township	Range
141674	710	KGS	Market	KS	Crawford	260	24	SE/4 NE/4	30S	024E
141675	710	KGS	Market	KS	Crawford	260	24	SE/4 SE/4	30S	024E
141676	710	KGS	Market	KS	Crawford	260	13	NW/4 NW/4	30S	024E
141724	710	KGS	Market	KS	Montgomery	495	01	NW/4 NE/4	32S	016E
141726	710	KGS	Market	KS	Montgomery	117	23	SE/4	31S	016E
141727	710	KGS	Market	KS	Montgomery	495	24	NW/4 SW/4	31S	016E
141728	710	KGS	Market	KS	Montgomery	495	10	SE/4 SW/4	31S	017E
141729	710	KGS	Market	KS	Montgomery	495	08	SW/4 SW/4	31S	017E
141731	710	KGS	Market	KS	Labette	495	12	SW/4 SW/4	31S	017E
141733	710	KGS	Market	KS	Labette	495	09	S/2 SE/4	31S	018E
141737	710	KGS	Market	KS	Labette	495	09	SW/4 SE/4	31S	019E
141740	710	KGS	Market	KS	Labette	495	10	SW/4 SW/4	31S	019E
141741	710	KGS	Market	KS	Labette	495	10	SW/4 SW/4	31S	019E
141743	710	KGS	Market	KS	Cherokee	260	26	NW/4 NE/4	31S	024E
141745	710	KGS	Market	KS	Cherokee	260	35	NE/4 NW/4	31S	024E
141748	710	KGS	Market	KS	Cherokee	260	31	SE/4 SE/4	31S	024E
141749	710	KGS	Market	KS	Cherokee	260	31	NE/4 NE/4	31S	024E
141750	710	KGS	Market	KS	Cherokee	260	35	SW/4 SW/4	31S	024E
141752	710	KGS	Market	KS	Crawford	260	13	NE/4 NE/4	31S	024E
141753	710	KGS	Market	KS	Cherokee	260	32	SW/4 SW/4	31S	024E
141769	710	KGS	Market	KS	Atchison	90	07	NW/4 SW/4	06S	021E
141771	710	KGS	Market	KS	Atchison	90	07		06S	021E
141778	710	KGS	Market	KS	Leavenworth	195	33	NE/4	08S	022E
141779	710	KGS	Market	KS	Leavenworth	195	33	NE/4 SE/4	08S	022E
141782	710	KGS	Market	KS	Atchison	90	35	SE/4 NE/4	05S	019E
141804	710	KGS	Market	KS	Montgomery	495	01	NW/4 NW/4	32S	016E
141808	710	KGS	Market	KS	Montgomery	495	01	NW/4 NE/4	32S	016E
141817	710	KGS	Market	KS	Wilson	177	19	SW/4 NE/4	30S	016E
141818	710	KGS	Market	KS	Montgomery	495	05	SW/4 SE/4	32S	017E
141819	710	KGS	Market	KS	Montgomery	495	06	NW/4	32S	017E
141821	710	KGS	Market	KS	Labette	260	32	NE/4 NW/4	32S	021E
141825	710	KGS	Market	KS	Labette	260	17	NW/4 NE/4	32S	021E
141828	710	KGS	Market	KS	Labette	260	05	SE/4 NE/4	32S	021E
141829	710	KGS	Market	KS	Labette	260	05	SE/4 SE/4	32S	021E
141831	710	KGS	Market	KS	Labette	260	08	NE/4 NE/4	32S	021E
141832	710	KGS	Market	KS	Labette	260	32	SE/4 SW/4	32S	021E
141833	710	KGS	Market	KS	Cherokee	260	01	SE/4 SW/4	32S	023E
141835	710	KGS	Market	KS	Cherokee	260	03	E/2 NE/4 NW4	32S	024E
141836	710	KGS	Market	KS	Cherokee	260	04	N/2 NE/4	32S	024E
141837	710	KGS	Market	KS	Cherokee	260	15	NE/4 NE/4	32S	024E
141838	710	KGS	Market	KS	Cherokee	260	22	SE/4 NE/4	32S	024E
141842	710	KGS	Market	KS	Cherokee	260	15	SE/4 SE/4	32S	024E
141843	710	KGS	Market	KS	Cherokee	260	10	SE/4 NE/4	32S	024E
141844	710	KGS	Market	KS	Cherokee	260	27	SE/4 SE/4	32S	024E
141886	141886	SSCGP	Market	KS	Montgomery	117	04	SW/4 SE/4	33S	016E
141888	710	KGS	Market	KS	Labette	260	25	NE/4 NE/4	33S	017E
141889	710	KGS	Market	KS	Labette	260	26	NW/4 NW/4	33S	017E

Southern Star Central Gas Pipeline, Inc.  
Kansas Domestic Meters to Be Abandoned  
by Sale in the Market AreaDocket No. CP23-\_\_\_\_-000  
Exhibit Z1

Meter Number	Location	Sales Service Provider	Rate Area	State	County	Line Segment	Section	Quarter Section	Township	Range
141894	710	KGS	Market	KS	Labette	260	25	NW/4 NW/4	33S	018E
141899	710	KGS	Market	KS	Labette	260	29	NE/4 NW/4	33S	019E
141901	710	KGS	Market	KS	Labette	260	29	NW/4	33S	020E
141903	710	KGS	Market	KS	Labette	260	26	NE/4 NE/4	33S	020E
141904	710	KGS	Market	KS	Labette	260	27	NE/4 NW/4	33S	020E
141905	710	KGS	Market	KS	Labette	260	29	NW/4 NE/4	33S	021E
141906	710	KGS	Market	KS	Labette	260	27	SW/4 NE/4	33S	021E
141908	710	KGS	Market	KS	Labette	260	30	NE/4 NE/4	33S	021E
141909	710	KGS	Market	KS	Cherokee	260	25	SE/4 SW/4	33S	021E
141911	710	KGS	Market	KS	Cherokee	260	27	SW/4 NW/4	33S	022E
141912	710	KGS	Market	KS	Cherokee	260	30	NW/4 SW/4	33S	022E
141913	710	KGS	Market	KS	Cherokee	260	30	N/2 SE/4	33S	022E
141914	710	KGS	Market	KS	Cherokee	260	26	NE/4 NE/4	33S	022E
141915	710	KGS	Market	KS	Cherokee	260	24	SW/4 SE/4	33S	023E
141916	710	KGS	Market	KS	Cherokee	260	27	NW/4 NW/4	33S	023E
141917	710	KGS	Market	KS	Cherokee	260	30	NW/4 NW/4	33S	023E
141918	710	KGS	Market	KS	Cherokee	260	24	SW/4 SE/4	33S	023E
141919	710	KGS	Market	KS	Cherokee	260	29	NE/4 NE/4	33S	023E
141921	710	KGS	Market	KS	Cherokee	260	28	NE/4 NE/4	33S	023E
141922	710	KGS	Market	KS	Cherokee	260	28	NE/4 NE/4	33S	023E
141924	710	KGS	Market	KS	Cherokee	260	25	NW/4 NW/4	33S	023E
141925	710	KGS	Market	KS	Cherokee	260	25	NE/4 NW/4	33S	023E
141926	710	KGS	Market	KS	Cherokee	260	28	NE/4 NW/4	33S	023E
141928	710	KGS	Market	KS	Cherokee	260	03	SE/4 NE/4	33S	024E
141931	710	KGS	Market	KS	Cherokee	260	26	NW/4 NW/4	33S	024E
141932	710	KGS	Market	KS	Cherokee	260	25	N/2 NW/4	33S	024E
141933	710	KGS	Market	KS	Cherokee	260	26	NE/4	33S	024E
141934	710	KGS	Market	KS	Cherokee	260	30	NW/4 NE/4	33S	024E
141935	710	KGS	Market	KS	Cherokee	260	25	NE/4 NE/4	33S	024E
141938	710	KGS	Market	KS	Cherokee	260	22	NE/4 NE/4	33S	024E
141939	710	KGS	Market	KS	Cherokee	260	29	NW/4 NW/4	33S	025E
141940	710	KGS	Market	KS	Cherokee	260	23	SW/4 SE/4	33S	025E
141941	710	KGS	Market	KS	Cherokee	260	22	SE/4 SW/4	33S	025E
141944	710	KGS	Market	KS	Cherokee	260	31	NW/4 SW/4	33S	025E
141946	710	KGS	Market	KS	Cherokee	260	28	NW/4 NE/4	33S	025E
141947	710	KGS	Market	KS	Cherokee	260	30	NW/4 NE/4	33S	025E
141948	710	KGS	Market	KS	Cherokee	260	30	NW/4 NW/4	33S	025E
141950	710	KGS	Market	KS	Cherokee	260	29	NE/4	33S	025E
141951	710	KGS	Market	KS	Cherokee	260	30	NE/4	33S	025E
141952	710	KGS	Market	KS	Cherokee	260	17	SW/4 SW/4	33S	025E
141954	710	KGS	Market	KS	Cherokee	260	22	SW/4 SE/4	33S	025E
141955	710	KGS	Market	KS	Cherokee	260	28	NW/4 NW/4	33S	025E
141957	710	KGS	Market	KS	Cowley	333	26	SW/4 NW/4	34S	003E
141958	710	KGS	Market	KS	Cowley	333	34	NW/4 SE/4	34S	003E
141959	710	KGS	Market	KS	Cowley	333	35	SE/4 SW/4	34S	003E
141961	710	KGS	Market	KS	Cowley	333	26	NW/4 SW/4	34S	003E
141979	710	KGS	Market	KS	Cherokee	260	18	NW/4 NW/4	34S	025E

Southern Star Central Gas Pipeline, Inc.  
Kansas Domestic Meters to Be Abandoned  
by Sale in the Market Area

Meter Number	Location	Sales Service Provider	Rate Area	State	County	Line Segment	Section	Quarter Section	Township	Range
141981	710	KGS	Market	KS	Cherokee	260	07	SW/4 NW/4	34S	025E
141985	710	KGS	Market	KS	Cherokee	260	11	NW/4 NW/4	34S	025E
141986	710	KGS	Market	KS	Cherokee	260	03	SW/4 NW/4	34S	025E
141987	710	KGS	Market	KS	Cherokee	225	06	NW/4 NE/4	35S	025E
141991	710	KGS	Market	KS	Cherokee	260	07	NW/4 SW/4	34S	025E
141993	710	KGS	Market	KS	Cherokee	260	07	SW/4 SW/4	34S	025E
141996	710	KGS	Market	KS	Cherokee	260	18	NW/4 NW/4	34S	025E
141997	710	KGS	Market	KS	Cherokee	260	19	NW/4 NW/4	34S	025E
141998	710	KGS	Market	KS	Cherokee	260	11	SE/4 NE/4	34S	025E
141999	710	KGS	Market	KS	Cherokee	225	31	NE/4 SE/4	34S	025E
142002	710	KGS	Market	KS	Cherokee	260	06	NW/4	34S	025E
142003	710	KGS	Market	KS	Cherokee	260	07	NW/4 SW/4	34S	025E
142004	710	KGS	Market	KS	Cherokee	260	07	NW/4 NE/4	34S	025E
142005	710	KGS	Market	KS	Cherokee	260	18	SW/4 NW/4	34S	025E
142006	710	KGS	Market	KS	Cherokee	260	07	NW/4 NW/4	34S	025E
142012	710	KGS	Market	KS	Cowley	333	02	NW/4 NE/4	35S	003E
142716	710	KGS	Market	KS	Bourbon	95	08	NW/4 NE4	26S	025E
142996	710	KGS	Market	KS	Leavenworth	195	19	NE/4 NW/4	09S	022E
142997	710	KGS	Market	KS	Leavenworth	195	18	SE/4 SW/4	09S	022E
142998	710	KGS	Market	KS	Leavenworth	195	06	NW/4 NW/4	09S	022E
142999	710	KGS	Market	KS	Leavenworth	195	04	SW/4 NE/4	11S	021E
143003	710	KGS	Market	KS	Miami	235	19	SW/4 NW/4	16S	024E
143007	143007		Market	KS	Jefferson	170	17	SW/4 NW/4	09S	020E
143008	143008	SSCGP	Market	KS	Jefferson	170	21	NW/4 NW/4	09S	020E
143010	143010	SSCGP	Market	KS	Jefferson	170	20	S/2 SE/4	09S	020E
143011	143011	SSCGP	Market	KS	Jefferson	170	32	NE/4 SW/4	09S	020E
143012	143012	SSCGP	Market	KS	Jefferson	170	29	NE/4 SE/4	09S	020E
143013	143013	SSCGP	Market	KS	Leavenworth	170	22	NW/4	09S	020E
143014	143014	SSCGP	Market	KS	Jefferson	170	29	NW/4 SE/4	09S	020E
143015	143015	SSCGP	Market	KS	Jefferson	170	30	SE/4 NE/4	09S	020E
143016	143016	SSCGP	Market	KS	Jefferson	170	21	NE/4 SE/4	09S	020E
143017	143017	SSCGP	Market	KS	Jefferson	170	21	NW/4 NW/4	09S	020E
143018	143018	SSCGP	Market	KS	Jefferson	170	16	SW/4 SE/4	09S	020E
143019	143019	SSCGP	Market	KS	Jefferson	170	17	SE/4 SW/4	09S	020E
143020	143020	SSCGP	Market	KS	Jefferson	170	16	SE/4 SW/4	09S	020E
143021	143021	SSCGP	Market	KS	Jefferson	170	32	SE/4 SW/4	09S	020E
143022	143022	SSCGP	Market	KS	Leavenworth	170	22	NW/4 SW/4	09S	020E
143023	143023	SSCGP	Market	KS	Jefferson	170	33	SW/4 NE/4	09S	020E
143024	143024	SSCGP	Market	KS	Jefferson	170	29	NW/4 SW/4	09S	020E
143025	143025	SSCGP	Market	KS	Leavenworth	170	27	NW/C SW/4	09S	020E
143026	143026	SSCGP	Market	KS	Jefferson	170	32	NE/4 SW/4	09S	020E
143027	143027	SSCGP	Market	KS	Jefferson	170	32	NW/4 SE/4	09S	020E
143028	143028	SSCGP	Market	KS	Leavenworth	170	27	E/2 W/2 SW/4	09S	020E
143029	143029	SSCGP	Market	KS	Jefferson	170	04	NE/4 NE/4	09S	020E
143030	143030	SSCGP	Market	KS	Jefferson	170	33	NW/4 SE/4	09S	020E
143031	143031	SSCGP	Market	KS	Leavenworth	170	34	SW/4 SW/4	09S	020E
143032	143032	SSCGP	Market	KS	Jefferson	170	29	NE/4 NW/4	09S	020E



Southern Star Central Gas Pipeline, Inc.  
Kansas Domestic Meters to Be Abandoned  
by Sale in the Market Area

Docket No. CP23-\_\_\_\_-000  
Exhibit Z1

Meter Number	Location	Sales Service Provider	Rate Area	State	County	Line Segment	Section	Quarter Section	Township	Range
143033	143033	SSCGP	Market	KS	Jefferson	170	20	NW/4 SE/4	09S	020E
143034	143034	SSCGP	Market	KS	Leavenworth	170	22	NW/4 SW/4	09S	020E
143035	143035	SSCGP	Market	KS	Leavenworth	170	22	NW/4 SW/4	09S	020E
143036	143036	SSCGP	Market	KS	Jefferson	170	32	SE/4 SE/4	09S	020E
143037	143037	SSCGP	Market	KS	Jefferson	170	20	NE/4 NE/4	09S	020E
143038	143038	SSCGP	Market	KS	Jefferson	170	20	NE/4 NE/4	09S	020E
143039	143039	SSCGP	Market	KS	Jefferson	170	33	NW/4 NW/4	09S	020E
143040	143040	SSCGP	Market	KS	Jefferson	170	28	SE/4	09S	020E
143041	143041	SSCGP	Market	KS	Leavenworth	195	09	SE/4 SE/4	09S	022E
143042	143042	SSCGP	Market	KS	Leavenworth	170	01	NE/4 SE/4	10S	020E
143043	143043	SSCGP	Market	KS	Leavenworth	170	18	SW/4 NW/4	10S	021E
143044	143044	SSCGP	Market	KS	Leavenworth	170	03	SW/4 NW/4	10S	020E
143047	143047	SSCGP	Market	KS	Jefferson	170	05	NE/4 SW/4	10S	020E
143048	143048	SSCGP	Market	KS	Jefferson	170	05	NW/4 NE/4	10S	020E
143049	143049	SSCGP	Market	KS	Leavenworth	170	12	NW/4 SW/4	10S	020E
143050	143050	SSCGP	Market	KS	Leavenworth	170	13	NW/4 NE/4	10S	020E
143052	143052	SSCGP	Market	KS	Leavenworth	170	01	SW/4 SE/4	10S	020E
143053	143053	SSCGP	Market	KS	Jefferson	170	07	E/2 NE/4	10S	020E
143054	143054	SSCGP	Market	KS	Leavenworth	170	12	SW/4 NW/4	10S	020E
143055	143055	SSCGP	Market	KS	Leavenworth	170	01	NW/4 SE/4	10S	020E
143056	143056	SSCGP	Market	KS	Leavenworth	170	11	SE/4 SE/4	10S	020E
143057	143057	SSCGP	Market	KS	Leavenworth	170	02	SW/4 SW/4	10S	020E
143058	143058	SSCGP	Market	KS	Jefferson	170	08	NE/4 NW/4	10S	020E
143059	143059	SSCGP	Market	KS	Jefferson	170	04	NW/4 NE/4	10S	020E
143061	143061	SSCGP	Market	KS	Leavenworth	170	01	NE/4 SE/4	10S	020E
143062	143062	SSCGP	Market	KS	Leavenworth	170	03	NE/4	10S	020E
143063	143063	SSCGP	Market	KS	Jefferson	170	05	SE/4 NW/4	10S	020E
143064	143064	SSCGP	Market	KS	Jefferson	170	06	NE/4 NE/4	10S	020E
143065	143065	SSCGP	Market	KS	Leavenworth	170	12	NE/4 NW/4	10S	020E
143066	143066	SSCGP	Market	KS	Leavenworth	170	07	NE/4 NW/4	10S	021E
143067	143067	SSCGP	Market	KS	Leavenworth	170	05	SW/4	10S	021E
143068	143068	SSCGP	Market	KS	Leavenworth	170	07	NE/4 NW/4	10S	021E
143069	143069	SSCGP	Market	KS	Leavenworth	170	09	NW/4 SW/4	10S	021E
143070	143070	SSCGP	Market	KS	Leavenworth	170	19	NE/4	10S	021E
143071	143071	SSCGP	Market	KS	Leavenworth	170	07	NW/4 NW/4	10S	021E
143072	143072	SSCGP	Market	KS	Leavenworth	195	13	NW/4 SE/4	10S	021E
143073	143073	SSCGP	Market	KS	Leavenworth	170	08	NE/4	10S	021E
143074	143074	SSCGP	Market	KS	Leavenworth	170	04		10S	021E
143075	143075	SSCGP	Market	KS	Leavenworth	170	08	SE/4 NE/4	10S	021E
143076	143076	SSCGP	Market	KS	Leavenworth	170	34	E/2 NW/4	10S	021E
143077	143077	SSCGP	Market	KS	Leavenworth	195	03	N/2 NW/4	11S	021E
143090	143090	SSCGP	Market	KS	Douglas	195	19	NW/4 SE/4	14S	020E
143091	143091	SSCGP	Market	KS	Johnson	190	29	SE/4	14S	022E
143092	143092	SSCGP	Market	KS	Douglas	195	18	NW/4 NW/4	15S	020E
143093	143093	SSCGP	Market	KS	Osage	140	22	SW/4 NW/4	16S	017E
143094	143094	SSCGP	Market	KS	Franklin	496	06	SE/4 SE/4	18S	020E
143097	143097	SSCGP	Market	KS	Anderson	496	25	NW/4 SW/4	20S	019E

Southern Star Central Gas Pipeline, Inc.  
Kansas Domestic Meters to Be Abandoned  
by Sale in the Market AreaDocket No. CP23-\_\_\_\_-000  
Exhibit Z1

Meter Number	Location	Sales Service Provider	Rate Area	State	County	Line Segment	Section	Quarter Section	Township	Range
143100	143100	SSCGP	Market	KS	Anderson	185	34	NE/4 SE/4	21S	019E
143101	143101	SSCGP	Market	KS	Anderson	185	28	NE/4 NW/4	21S	019E
143102	143102	SSCGP	Market	KS	Anderson	185	28	SE/4 NE/4	21S	019E
143104	143104	SSCGP	Market	KS	Anderson	255	02	NW/4 NE/4	22S	019E
143105	143105	SSCGP	Market	KS	Anderson	50	21	SE/4	22S	019E
143106	143106	SSCGP	Market	KS	Anderson	495	09	SW/4 SW/4	22S	019E
143107	143107	SSCGP	Market	KS	Anderson	255	02	SE/4	22S	019E
143111	143111	SSCGP	Market	KS	Anderson	495	11	SW/4 SE/4	23S	018E
143112	143112	SSCGP	Market	KS	Anderson	50	12	SE/4	23S	018E
143113	143113	SSCGP	Market	KS	Anderson	50	07	NE/4 SW/4	23S	019E
143122	143122	SSCGP	Market	KS	Anderson	50	05	SE/4 NW/4	23S	019E
143127	143127	SSCGP	Market	KS	Anderson	50	05	SW/4 SW/4	23S	019E
143133	143133	SSCGP	Market	KS	Anderson	50	05	SW/4 NW/4	23S	019E
143136	143136	SSCGP	Market	KS	Allen	220	35	SW/4 SE/4	24S	017E
143137	143137	SSCGP	Market	KS	Allen	220	35	SE/4 SW/4	24S	017E
143138	143138	SSCGP	Market	KS	Allen	220	36	SW/4 SW/4	24S	017E
143140	143140	SSCGP	Market	KS	Allen	220	35	SE/4 SW/4	24S	017E
143141	143141	SSCGP	Market	KS	Allen	220	36	SW/4 SW/4	24S	017E
143142	143142	SSCGP	Market	KS	Allen	495	04	NW/4 SW/4	24S	018E
143145	143145	SSCGP	Market	KS	Brown	90	07	N/2 NE/4	02S	015E
143146	143146	SSCGP	Market	KS	Allen	220	02	NE/4 NE/4	25S	017E
143147	143147	SSCGP	Market	KS	Woodson	220	03	SE/4 SE/4	25S	017E
143153	143153	SSCGP	Market	KS	Wilson	498	16	NW/4 SE/4	27S	017E
143154	143154	SSCGP	Market	KS	Neosho	495	14	W/2 SW/4	27S	017E
143168	143168	SSCGP	Market	KS	Wilson	177	19	NE/4 NW/4	30S	016E
143170	143170	SSCGP	Market	KS	Elk	333	26	NE/4 SE/4	31S	008E
143171	143171	SSCGP	Market	KS	Elk	333	36	NE/4 NE/4	31S	008E
143172	143172	SSCGP	Market	KS	Elk	333	29	NW/4 SE/4	31S	009E
143173	143173	SSCGP	Market	KS	Elk	333	31	N/2	31S	009E
143174	143174	SSCGP	Market	KS	Elk	333	31	NE/4 SE/4	31S	009E
143175	143175	SSCGP	Market	KS	Montgomery	87	23	SE/4 SE/4	31S	013E
143176	143176	SSCGP	Market	KS	Montgomery	87	26	NW/4 SE/4	31S	013E
143177	143177	SSCGP	Market	KS	Montgomery	87	23	NE/4 SW/4	31S	013E
143189	143189	SSCGP	Market	KS	Chautauqua	333	04	SE/4 SE/4	32S	009E
143191	143191	SSCGP	Market	KS	Labette	260	27	NW/4	33S	021E
143192	143192	SSCGP	Market	KS	Chautauqua	117	09	S/2 SW/4	34S	012E
143309	143309	SSCGP	Market	KS	Johnson	190	22	SE/4	12S	023E
143316	143316	SSCGP	Market	KS	Marion	140	26	NE/4	21S	001E
143322	143322	SSCGP	Market	KS	Anderson	185	27	NE/4 SW/4	21S	019E
143323	143323	SSCGP	Market	KS	Anderson	185	34	SE/4 SE/4	21S	019E
143324	143324	SSCGP	Market	KS	Anderson	185	20	NW/4 NE/4	21S	019E
143326	143326	SSCGP	Market	KS	Anderson	185	27	SE/4 SE/4	21S	019E
143327	143327	SSCGP	Market	KS	Anderson	185	26	NE/4 SE/4	21S	019E
143328	143328	SSCGP	Market	KS	Anderson	185	26	SW/4 NW/4	21S	019E
143329	143329	SSCGP	Market	KS	Anderson	255	16	SE/4 SE/4	22S	019E
143333	143333	SSCGP	Market	KS	Anderson	255	15	SW/4	22S	019E
143334	143334	SSCGP	Market	KS	Anderson	255	03	NE/4 SE/4	22S	019E

Southern Star Central Gas Pipeline, Inc.  
Kansas Domestic Meters to Be Abandoned  
by Sale in the Market Area

Meter Number	Location	Sales Service Provider	Rate Area	State	County	Line Segment	Section	Quarter Section	Township	Range
143335	143335	SSCGP	Market	KS	Anderson	255	09	NE/4 NE/4	22S	019E
143336	143336	SSCGP	Market	KS	Anderson	255	22	NE/4 NE/4	22S	019E
143344	143344	SSCGP	Market	KS	Elk	498	20	N/2 SW/4	29S	011E
143348	143348	SSCGP	Market	KS	Elk	333	32	SW/4 SE/4	31S	009E
143349	143349	SSCGP	Market	KS	Elk	333	29	NW/4 NE/4	31S	009E
143350	143350	78	Market	KS	Montgomery	87	26	NE/4 SE/4	31S	013E
143352	710	KGS	Market	KS	Labette	260	25	NE/4 NE/4	33S	019E
143385	143385	SSCGP	Market	KS	Jefferson	170	32	SE/4 SE/4	09S	020E
143387	710	KGS	Market	KS	Douglas	195	19	NE/4 SW/4	14S	020E
143388	710	KGS	Market	KS	Leavenworth	195	01	SE/4 SE/4	10S	021E
143389	710	KGS	Market	KS	Leavenworth	195	18	SW/4 SE/4	09S	022E
143390	710	KGS	Market	KS	Leavenworth	195	24	NW/4 SW/4	09S	022E
143391	710	KGS	Market	KS	Leavenworth	195	29	NW/4 NW/4	08S	022E
143392	710	KGS	Market	KS	Jewell	265	16	NE/4 NE/4	03S	010W
143393	710	KGS	Market	KS	Leavenworth	195	08	NE/4 NE/4	11S	021E
143404	710	KGS	Market	KS	Smith	265	17	SW/4 SE/4	03S	011W
143419	710	KGS	Market	KS	Franklin	496	05	NE/4 NW/4	17S	020E
143425	710	KGS	Market	KS	Johnson	190	27	NE/4 NW/4	14S	022E
143428	143428	SSCGP	Market	KS	Atchison	90	30	NE/4 NE/4	06S	021E
143429	143429	SSCGP	Market	KS	Leavenworth	250	15	SW/4	08S	022E
143430	143430	SSCGP	Market	KS	Jefferson	170	17	SE/4 NW/4	09S	020E
143431	143431	SSCGP	Market	KS	Jefferson	170	29	NE/4 SW/4	09S	020E
143432	143432	SSCGP	Market	KS	Jefferson	170	29	NE/4 NE/4	09S	020E
143433	143433	SSCGP	Market	KS	Jefferson	170	29	SE/4 NW/4	09S	020E
143434	143434	SSCGP	Market	KS	Jefferson	170	32	SW/4 SE/4	09S	020E
143435	143435	SSCGP	Market	KS	Leavenworth	170	08	NW/4 NE/4	10S	021E
143439	143439	SSCGP	Market	KS	Anderson	50	07	SW/4 NW/4	23S	019E
143440	143440	SSCGP	Market	KS	Allen	495	36	SE/4 SE/4	25S	017E
143452	143452	SSCGP	Market	KS	Leavenworth	170	08	NE/4 SE/4	10S	021E
143453	143453	SSCGP	Market	KS	Jefferson	170	27	E/2 NW/4	09S	020E
143459	143459	SSCGP	Market	KS	Jefferson	170	21	SW/4 NE/4	09S	020E
143460	143460	SSCGP	Market	KS	Labette	260	27	NW/4 NE/4	33S	020E
143475	143475	SSCGP	Market	KS	Anderson	50	28	NE/4 NW/4	22S	019E
143482	143482	SSCGP	Market	KS	Jefferson	170	05	SW/4 NE/4	10S	020E
143483	143483	SSCGP	Market	KS	Leavenworth	195	01	SE/4 SE/4	10S	021E
143484	143484	SSCGP	Market	KS	Allen	220	02	W/2 NE/4	25S	017E
143486	143486	SSCGP	Market	KS	Anderson	255	15	NW/4 NW/4	22S	019E
143487	143487	SSCGP	Market	KS	Anderson	255	22	SE/4 SE/4	22S	019E
143488	143488	SSCGP	Market	KS	Anderson	255	23	SW/4 SW/4	22S	019E
143489	143489	SSCGP	Market	KS	Anderson	185	28	SE/4 SE/4	21S	019E
143509	710	KGS	Market	KS	Cherokee	260	05	SW/4 SW/4	32S	024E
143510	710	KGS	Market	KS	Cherokee	260	25	NE/4 NW/4	33S	023E
143511	710	KGS	Market	KS	Cherokee	260	25		33S	023E
143516	710	KGS	Market	KS	Leavenworth	195	30	SW	11S	021E
143521	710	KGS	Market	KS	Labette	260	29	SE/4 NE/4	33S	021E
143522	143522	SSCGP	Market	KS	Brown	90	08	NE/4	02S	015E
143523	143523	SSCGP	Market	KS	Montgomery	87	23	SE/4 SW/4	31S	013E

Southern Star Central Gas Pipeline, Inc.  
Kansas Domestic Meters to Be Abandoned  
by Sale in the Market AreaDocket No. CP23-\_\_\_\_-000  
Exhibit Z1

Meter Number	Location	Sales Service Provider	Rate Area	State	County	Line Segment	Section	Quarter Section	Township	Range
143526	710	KGS	Market	KS	Miami	235	13	SE/4 SW/4	16S	024E
143527	710	KGS	Market	KS	Leavenworth	195	27	SE/4 NE/4	10S	021E
143531	710	KGS	Market	KS	Brown	90	28	SE/4	02S	017E
143532	710	KGS	Market	KS	Wilson	495	21	NW/4 NE/4	28S	017E
143533	710	KGS	Market	KS	Labette	495	08	SE/4 SW/4	31S	018E
143536	710	KGS	Market	KS	Johnson	190	27	E/2SE/4	13S	22E
143543	710	KGS	Market	KS	Franklin	190	10	E/2 NE/4	16S	020E
143544	710	KGS	Market	KS	Osage	140	08	SW/4 SW/4	15S	017E
143552	143552	SSCGP	Market	KS	Leavenworth	195	05	SE/4 SE/4	11S	021E
143556	710	KGS	Market	KS	Allen	495	04	NW/4 SW/4	26S	018E
143559	143559	SSCGP	Market	KS	Douglas	195	18	SW/4	14S	020E
143561	143561	SSCGP	Market	KS	Montgomery	260	25	NW/4 NE/4	33S	016E
143565	710	KGS	Market	KS	Atchison	90	12	NW/4 SE/4	06S	020E
143566	710	KGS	Market	KS	Cherokee	260	29	NW/4 NW/4	33S	024E
143569	143569	SSCGP	Market	KS	Leavenworth	195	34	NW/4	10S	021E
143573	143573	SSCGP	Market	KS	Anderson	50	07	N/2	23S	019E
143578	143578	SSCGP	Market	KS	Leavenworth	195	35	NE/4 NE/4	07S	021E
143579	143579	SSCGP	Market	KS	Leavenworth	195	11	NW/4	12S	020E
143584	143584	SSCGP	Market	KS	Douglas	180	10	W/2 NW/4	12S	018E
143587	710	KGS	Market	KS	Franklin	496	30		18S	019E
143588	710	KGS	Market	KS	Allen	495	33	SE/4 SW/4	23S	018E
143603	143603	SSCGP	Market	KS	Jefferson	170	28	W/2 NE/4	09S	020E
143604	710	KGS	Market	KS	Leavenworth	195	13	NW/4 SE/4	10S	021E
143609	143609	SSCGP	Market	KS	Anderson	255	10	E/2 NE/4	22S	019E
143612	143612	SSCGP	Market	KS	Osage	140	29	SW 1/4	17S	014E
143614	710	KGS	Market	KS	Lyon	140	33	SE 1/4	17S	013E
143616	710	KGS	Market	KS	Osage	493	22	SE 1/4	18S	015E
143617	710	KGS	Market	KS	Miami	235	14	S/2 SE 1/4	16S	024E
143623	143623	SSCGP	Market	KS	Cowley	333	34	SE 1/4	34S	003E
143624	710	KGS	Market	KS	Osage	140	09		16S	017E
143625	710	KGS	Market	KS	Anderson	496	34	NE 1/4	20S	019E
143626	710	KGS	Market	KS	Brown	90	28	N/2NE/4/NE4	02S	017E
143629	710	SSCGP	Market	KS	Jefferson	170	31	SE 1/4	09S	020E
143630	710	KGS	Market	KS	Miami	235	13	SW 1/4	16S	024E
143644	710	KGS	Market	KS	Wilson	495	13	SE/4	30S	016E
143645	710	KGS	Market	KS	Bourbon	95	19	SW/4 SE/4	26S	023E
143647	710	KGS	Market	KS	Leavenworth	195	11	SE/4	09S	022E
143648	710	KGS	Market	KS	Franklin	190	20	NE/4 SE/4	15S	021E
143649	143649	SSCGP	Market	KS	Anderson	185	21	SW/4 SW/4	21S	019E
143651	710	KGS	Market	KS	Anderson	496	15	SW/4 NE/4	20S	019E
143662	143662	SSCGP	Market	KS	Jefferson	170	32	NE/4 SW/4	09S	020E
143664	710	KGS	Market	KS	Jackson	90	34	N/2 N/2 SE/4	06S	015E
143667	710	KGS	Market	KS	Osborne	265	30	NW/4 NE/4	06S	011W
143687	143687	SSCGP	Market	KS	Leavenworth	170	03	NW/4 NW/4	10S	020E
143689	710	KGS	Market	KS	Johnson	190	27	SE4/NW/4	13S	22E
143699	143699	SSCGP	Market	KS	Jefferson	170	05	NE/4	10S	020E
143700	143700	SSCGP	Market	KS	Jefferson	170	04	NW/4	10S	020E

Southern Star Central Gas Pipeline, Inc.  
Kansas Domestic Meters to Be Abandoned  
by Sale in the Market AreaDocket No. CP23-\_\_\_\_-000  
Exhibit Z1

Meter Number	Location	Sales Service Provider	Rate Area	State	County	Line Segment	Section	Quarter Section	Township	Range
143701	143701	SSCGP	Market	KS	Jefferson	170	08	N/2 NW/4	10S	020E
143708	143708	SSCGP	Market	KS	Jefferson	170	29	NW/4 NE/4	09S	020E
143717	143717	SSCGP	Market	KS	Montgomery	87	23		31S	13S
143720	143720	SSCGP	Market	KS	Jefferson	170	17	SE	9S	20E
143721	143721	SSCGP	Market	KS	Anderson	185	26	NE/SE	21S	19E
143726	143726	SSCGP	Market	KS	Shawnee	180	7	SE1/4	12S	17E
143727	143727	SSCGP	Market	KS	Jefferson	170	5	SE/4 SW/4	10S	20E
143728	143728	SSCGP	Market	KS	Johnson	190	22	S/2 SW/4	13S	22E
143745	143745	SSCGP	Market	KS	Leavenworth	170	8	N/4 SE/4	10S	21E
143751	143751	SSCGP	Market	KS	Anderson	50	14	W/2 NE / 4	23S	18 E
143755	143755	SSCGP	Market	KS	Jefferson	170	21N	NW/4 NE/4	9S	20 E
143759	143759	SSCGP	Market	KS	Anderson	50	17		22S	19E
143760	710	KGS	Market	KS	Miami	235	15	SW/4 SE/4	16S	25E
143774			Market	KS	OSAGE	493	4		18S	17E
143775	710	KGS	Market	KS	OSAGE	493	9		18S	16E
143934	710	KGS	Market	KS	Leavenworth	195	12	SE/4 NE/4	09S	022E
143935	710	KGS	Market	KS	Leavenworth	195	12	SE/4 NE/4	09S	021E
143939	710	KGS	Market	KS	Neosho	495	05		27S	18E
143940	710	KGS	Market	KS	Jewell	265	21		3S	10W
143941	710	KGS	Market	KS	Jewell	265	24		10W	3S
143942	710	KGS	Market	KS	Neosho	495	05		27S	18E
143943	710	KGS	Market	KS	Franklin	180	30		15S	20E
143944	710	KGS	Market	KS	Franklin	496	13		18S	19E
143945	710	KGS	Market	KS	Franklin	496	05		17S	20E
143946	710	KGS	Market	KS	Neosho	495	02		27	17E
143948	710	KGS	Market	KS	Jewell	265	21		3S	9W
143949	710	KGS	Market	KS	Jewell	265	23		3S	10W
143950	710	KGS	Market	KS	Franklin	300	07		17S	20E
143951	710	KGS	Market	KS	Franklin	300	19		17S	19E
143952	710	KGS	Market	KS	Franklin	496	29		19S	20E
143953	710	KGS	Market	KS	Neosho	495	25	NE/4 SE/4	28S	17E
143954	710	KGS	Market	KS	Wilson	495	31	NW/4 NE/4	29S	17E
143955	710	KGS	Market	KS	Neosho	495	09		27S	18E
143956	710	KGS	Market	KS	Lyon	140	03		21S	11E
143957	710	KGS	Market	KS	Cherokee	260	29		33	25
143958	710	KGS	Market	KS	Cherokee	260	26		33	25
143960	710	KGS	Market	KS	Shawnee	180	31		11S	17E
143961	710	KGS	Market	KS	Leavenworth	90	07		8S	22E
143962	710	KGS	Market	KS	Cherokee	260	20		33S	25E
143963	710	KGS	Market	KS	Neosho	495	05		27S	18E
143964	710	KGS	Market	KS	Montgomery	495	02	NE/4	32	16
143965	710	KGS	Market	KS	Neosho	495	05		27S	18E
144031		KGS	Market	KS	Johnson	190	1	N/2 SW/4	14S	22E
144091	710	KGS	Market	KS	Mitchell	265	26		6S	8W
144177	710	KGS	Market	KS	Franklin	493	31		16S	20E
144222		Unknown	Market	KS	Miami	235	18		16S	25E
144303	710	KGS	Market	KS	Allen	220	36		24S	17E

Southern Star Central Gas Pipeline, Inc.  
Kansas Domestic Meters to Be Abandoned  
by Sale in the Market Area

Docket No. CP23-\_\_\_\_-000  
Exhibit Z1

Meter Number	Location	Sales Service Provider	Rate Area	State	County	Line Segment	Section	Quarter Section	Township	Range
144358	710	KGS	Market	KS	Allen	95	28		26S	20E
150020	710	KGS	Market	KS	COWLEY	333	2		35S	3E



Southern Star Central Gas Pipeline, Inc.  
Kansas Domestic Meters to Be Abandoned  
by Sale in the Production Area

Docket No. CP23-\_\_\_\_-000  
Exhibit Z1

Meter Number	Location	Sales Service Provider	Rate Area	State	County	Line Segment	Section	Quarter Section	Township	Range
140665	610	KGS	Production	KS	Rice	3	23	N/2 NE/4	20S	008W
140669	610	KGS	Production	KS	Rice	3	12		21S	009W
141078	610	KGS	Production	KS	Barton	45	24	NW/4 NW/4	20S	011W
141250	610	KGS	Production	KS	Sedgwick	120	04	SW/4 SW/4	25S	001W
141517	610	KGS	Production	KS	Butler	295	33		28S	003E
141734	610	KGS	Production	KS	Kiowa	130	23	S/2 SE/4	27S	018W

**CONFIDENTIAL**  
**EXHIBITS 4A AND**  
**4B**  
**CUSTOMER LISTS**



**CONFIDENTIAL**

**EXHIBIT 5**

**Letter to Kansas Gas  
Service**

# EXHIBIT 6

## Prior Agreements

June 10, 1953

Mr. J. L. Willard, Vice-President  
Cities Service Gas Company  
Oklahoma City, Oklahoma

Dear Sir:

We are enclosing the duplicate copy of your letter of June 8th with respect to certain domestic consumers which you are now serving.

Your proposal has been agreed to by Mr. Power.

Yours very truly,

I. W. McKee  
Treasurer

IWMc:aw  
Enclosure



CITIES SERVICE GAS COMPANY  
FIRST NATIONAL BUILDING  
OKLAHOMA CITY 1, OKLAHOMA

June 8, 1953

The Gas Service Company  
700 Scarritt Building  
Kansas City, Missouri

Gentlemen:

Cities Service Gas Company presently is serving natural gas from its transmission pipe lines to certain domestic consumers where contractual or other obligations require such service. In general, Cities Service Gas Company does not make retail domestic sales, and it therefore desires to transfer these consumers to The Gas Service Company.

There are about 1055 such consumers now attached to our transmission lines which are subject to transfer. The annual consumption of these consumers is estimated to be 182,000 Mcf. This volume when billed at filed rates of The Gas Service Company would produce a revenue of approximately \$76,400. The expense to The Gas Service Company for purchased gas cost based on filed rates of Cities Service Gas Company would be about \$34,400. A tabulation of the consumers we desire to transfer will be forwarded you in the very near future.

We propose the transfer of these consumers under the following procedure:

- (1) Cities Service Gas Company will assign to The Gas Service Company the service agreements and will transfer the customer deposits securing the payment of bills plus accrued interest to July 1, 1953;
- (2) As soon as possible after July 20, 1953, Cities Service Gas Company will sell to Gas Service Company all accounts receivable with the understanding that Cities Service Gas Company will guarantee payment to The Gas Service Company for all accounts so transferred that may become uncollectible.
- (3) Bills rendered on June 30, 1953, will be accompanied by a letter notifying each consumer that his account, together with his deposit, is being transferred to The Gas Service Company as of July 1, 1953, and that he will be notified by The Gas Service Company, prior to the next billing, where his future bills should be paid.
- (4) Cities Service Gas Company will continue to read all meters and will forward meter books to the proper billing office to be designated by The Gas Service Company until a mutually satisfactory arrangement can be worked out for the continued reading of all meters.

-2-

Cities Service Gas Company in the conduct of its business occasionally finds it necessary and expedient to attach new domestic consumers along the routes of certain of its transmission pipe lines. The Gas Service Company hereby agrees that it will cooperate with Cities Service Gas Company in taking over such new domestic customers, except those located in the State of Texas.

If this is satisfactory to your company, please execute both copies of this letter in the space provided below and return one copy for our files.

Very truly yours

CITIES SERVICE GAS COMPANY

By

J.R. Willard  
Vice President

AGREED to

June 8 1953

THE GAS SERVICE COMPANY

By

Attorney  
Vice President



*W. L. Loran*

CITIES SERVICE GAS COMPANY  
FIRST NATIONAL BUILDING  
OKLAHOMA CITY 1, OKLAHOMA

NOTICE

THE ENCLOSED BILL IS THE LAST YOU WILL RECEIVE FROM  
CITIES SERVICE GAS COMPANY

Cities Service Gas Company is transferring your account, together with your deposit guaranteeing the payment of bills, to THE GAS SERVICE COMPANY who will furnish you gas service in the future.

Please pay this bill promptly to CITIES SERVICE GAS COMPANY on or before July 10th, 1953, so that your account may be transferred with the least inconvenience to all parties concerned.

Prior to the next billing you will be notified by THE GAS SERVICE COMPANY where to make future payments for gas service.

There will be no change in service or in the cost of gas as The Gas Service Company rates are the same as you are now paying to Cities Service Gas Company.

Kansas Gas Service

24-KGSG-XXX-CON  
Exhibit 6

RICHARD N. FICKEN  
Vice President  
Customer Services and Rates  
918/573-2796

April 8, 1998

Gas Pipelines - Central  
One Williams Center  
P.O. Box 3288  
Tulsa, Oklahoma 74101

Mr. Dave Arnold  
Vice President, Customer Service  
Kansas Gas Service  
P. O. Box 3535  
Topeka, KS 66601

Re: Letter Agreement Covering Farm Tap Meter Reading, Invoicing, and Maintenance

Dear Mr. Arnold:

This Letter Agreement between Williams Gas Pipelines Central, Inc. ("Williams") and Kansas Gas Service ("KGS") is intended to document the existing business relationship concerning the reading, maintenance, and invoicing of approximately 1,100 farm taps located along Williams' pipeline easements in Kansas and a new agreement between the parties related to approximately 600 additional Williams' farms taps in Kansas.


In exchange for ~~\$100,000~~ <sup>\$110,000</sup> and other valuable consideration, KGS will undertake responsibility for the monthly reading of all farm taps invoiced and maintained by KGS, and located on Williams' natural gas pipeline easements in Kansas. The transfer of the monthly reading responsibilities from Williams to KGS will take place by a date agreeable to both parties, but in no event later than June 30, 1998. Williams personnel will provide all assistance necessary to KGS in order to make an orderly transfer of reading responsibilities.

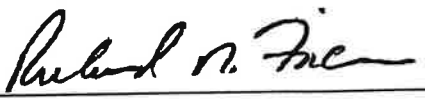
In addition to undertaking the new responsibility for the reading of approximately 600 farm tap meters in Kansas, KGS will continue to perform inspections and maintenance on the approximately 1700 farm taps as required. For purposes of Williams' transportation services accounting, KGS will continue to provide Williams with monthly aggregate volumes consumed in production and market areas, based upon specific meter locations in those respective areas as designated by Williams.

Williams reserve the right to perform an annual audit of the aggregate volumes tied to Williams' easement obligations. If discrepancies are identified, Williams will provide to KGS a letter addressing the issues and the amounts in questions, asking for a written response within 60 days. Adjustments will go back no further than six months from the last month audited.

Please sign below to indicate your agreement with respect to the arrangement outlined in this Letter Agreement.

Agreed and accepted this 20 day of April, 1998. Agreed and accepted this 8 day of April, 1998.

  
Dave Arnold  
Vice President, Customer Service  
Kansas Gas Service

  
Richard N. Ficken  
Vice President, Customer Service & Rates  
Williams Gas Pipelines Central, Inc.

rich\arnold.doc\dvt



1950 — STACY KRAMER —

✓

THE GAS SERVICE COMPANY  
INTER-OFFICE MEMORANDUM

*Superseded without letting 2-8-77* DATE August 10, 1979  
*check with wilcox for cost before setting meter.*

TO Wichita, Kansas OFFICE FROM Corporate Headquarters OFFICE

ATTENTION OF Mr. Starnes Walker

*Note People & Pouchelle cost are different  
see page 3 of Jan 21, 1972 H/L memo  
letter.*

Dear Starnes:

An agreement has been reached whereby Cities Service Gas Company will transfer a number of farm tap customers to The Gas Service Company. This transfer is to be effective on or about August 23, 1979.

The effected customers will be in one of the three categories described below and service shall be rendered accordingly. In all cases, Gas Service will bill the customer at prevailing rates.

*\* Bq still furnished by CS.*

Category A - Full service, including meter reading, to be provided by Gas Service. Meters with 8 oz. pressure compensating indexes to be owned and installed by Gas Service. Odorizers to be owned and serviced by Gas Service. Odorizers currently installed on meter settings will be purchased from Cities Service at \$21.00 each. A Construction Work Order shall be prepared and submitted for the number of odorizers involved in your Division. It will be necessary to coordinate this effort with the local Cities Service Division so that meter locations can be determined and Gas Service meters installed at the same time Cities Service meters are removed. Odorizers should be checked and filled, if necessary, at the same time.

*Gas Service  
Responsible  
for Service*

Category B - Meters only to be owned by Gas Service. All service, including meter reading and odorizer servicing, to be provided by Cities Service. It will be necessary to furnish meters with 8 oz. pressure compensating indexes, for each customer in this category, to the local Cities Service Division for installation by Cities Service. Cities Service shall provide a copy of their meter set order so that a properly executed Gas Service Meter Set Order can be prepared.

*Cities  
Responsible  
for Service*

Category C - These customers are located in Counties in which Gas Service owns no property or equipment or so called "Non-indentured Counties". Cities Service will own all equipment, including meters and odorizers, and will provide all service, including meter reading. Gas Service's sole function will be to bill and collect for gas used.

*CS  
Responsible  
for Service*



-2-

A list of the customers, by category, assigned to your Division is attached. These customers will be advised of the transfer by Cities Service. Please advise this office should any difficulties regarding special rates, meter sizing, delivery pressures, etc., be encountered.

Meters in all Categories must be read; when the transfer from Cities Service to Gas Service is made, so it will be necessary to obtain the meter readings for Category B & C customers from Cities Service.

If you do not have sufficient meters with 8 oz. pressure compensating indexes to serve the customers in Categories A & B, please advise so that we may assist in obtaining them for you.

When all aspects of this transfer are completed, please send a copy of the attached list of customers to this office advising of the completion and indicating any necessary corrections or changes thereto.

Yours very truly,



T. A. Robinett

TAR:mw  
Attached

# EXHIBIT 7

Notice to Customers of  
Acquisition and KCC  
Application Filing and  
Certification of Service of  
Notice to Customers

(late-filed exhibit)