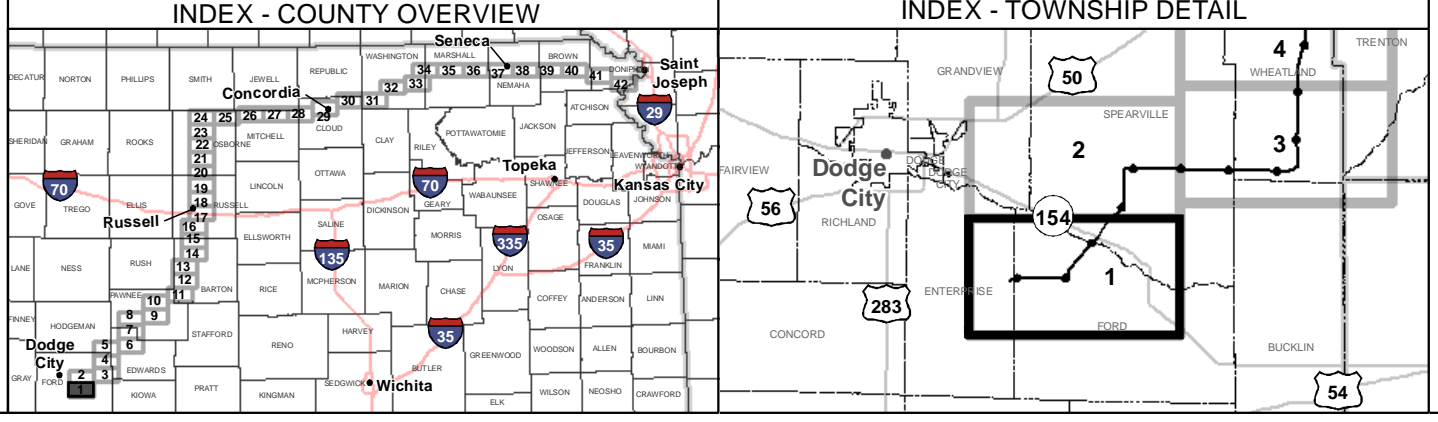


Legend

- Proposed Route
- Trail
- River or Stream
- County Boundary
- Public Land Survey System
- Existing Transmission**
- >230 kV
- 138 kV and 161 kV
- <115 kV
- Railroad
- Private Conservation Land
- Local Conservation Land
- State Land
- Federal Land

Grain Belt Express Clean Line

Kansas Proposed Route

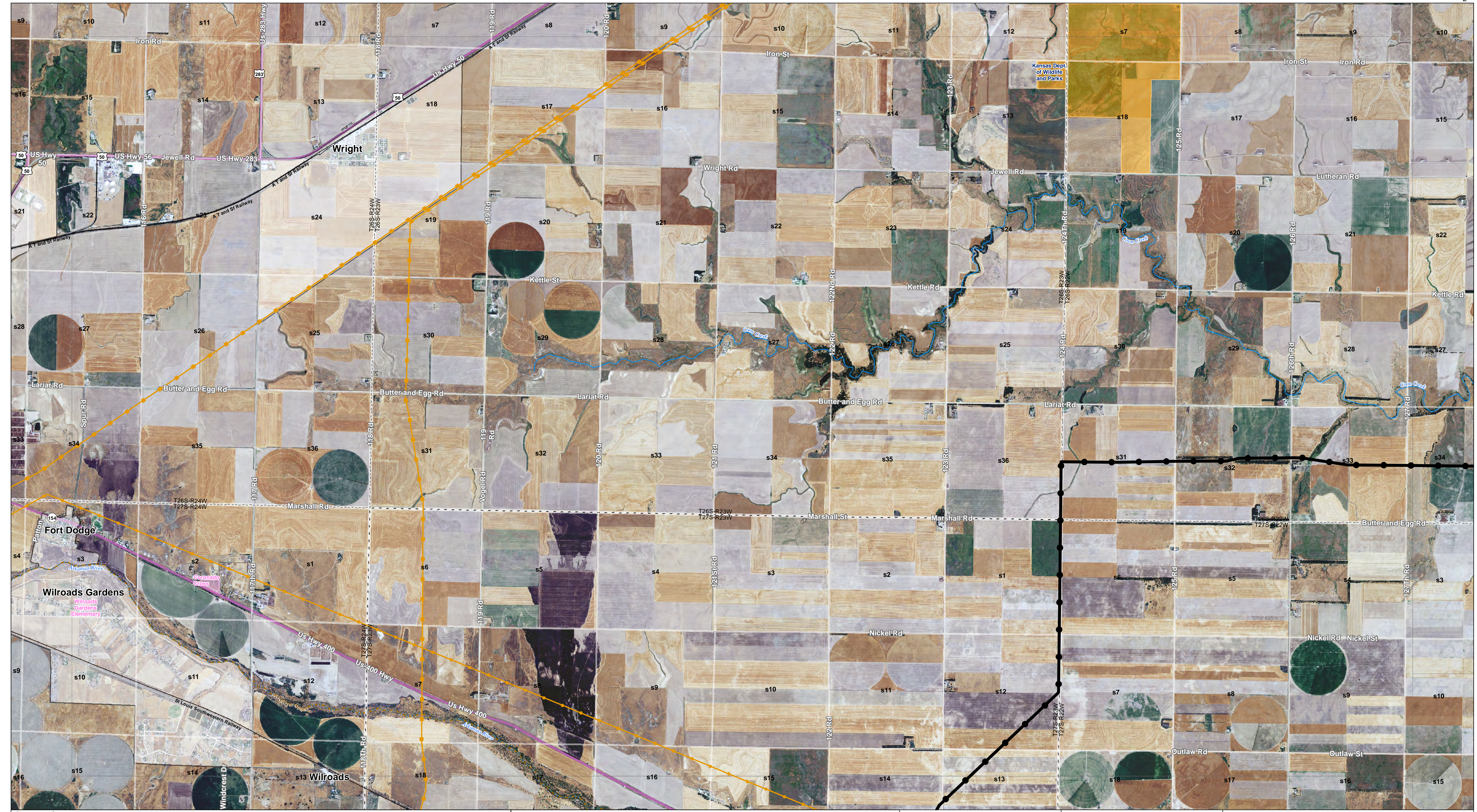


Tile 1 of 42

GRAIN BELT EXPRESS
CLEAN LINE

0 0.25 0.5 1 Miles

1 in = 2,000 feet when produced at a page size of 22" by 34"
or 1 in = 4,000 feet when produced at a page size of 11" by 17"

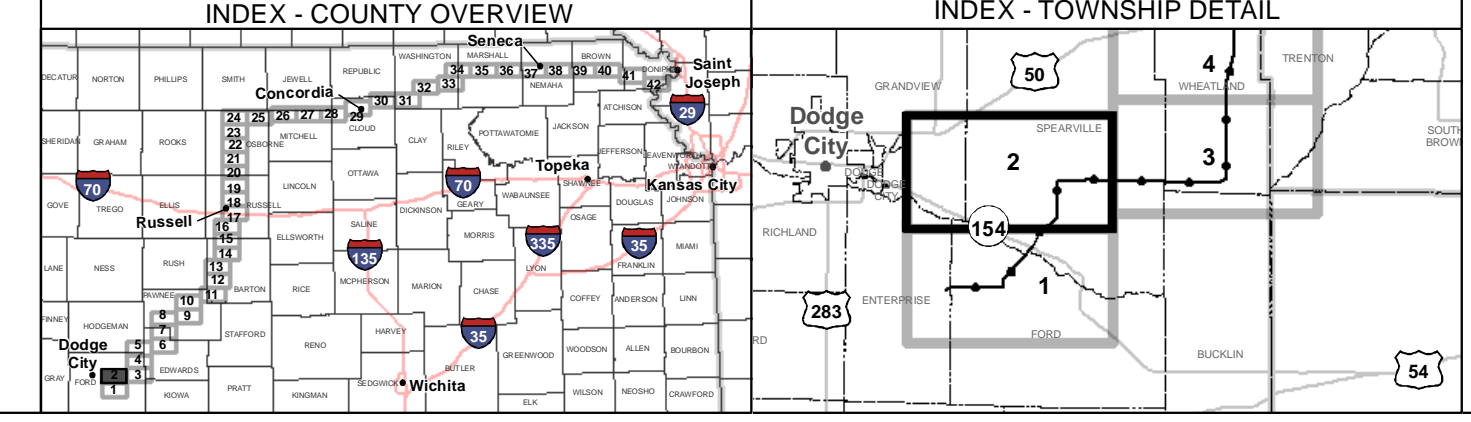


Legend

- Proposed Route
- Trail
- River or Stream
- County Boundary
- Public Land Survey System
- Existing Transmission**
- >230 kV
- 138 kV and 161 kV
- <115 kV
- Railroad
- Private Conservation Land
- Local Conservation Land
- State Land
- Federal Land

Grain Belt Express Clean Line

Kansas Proposed Route

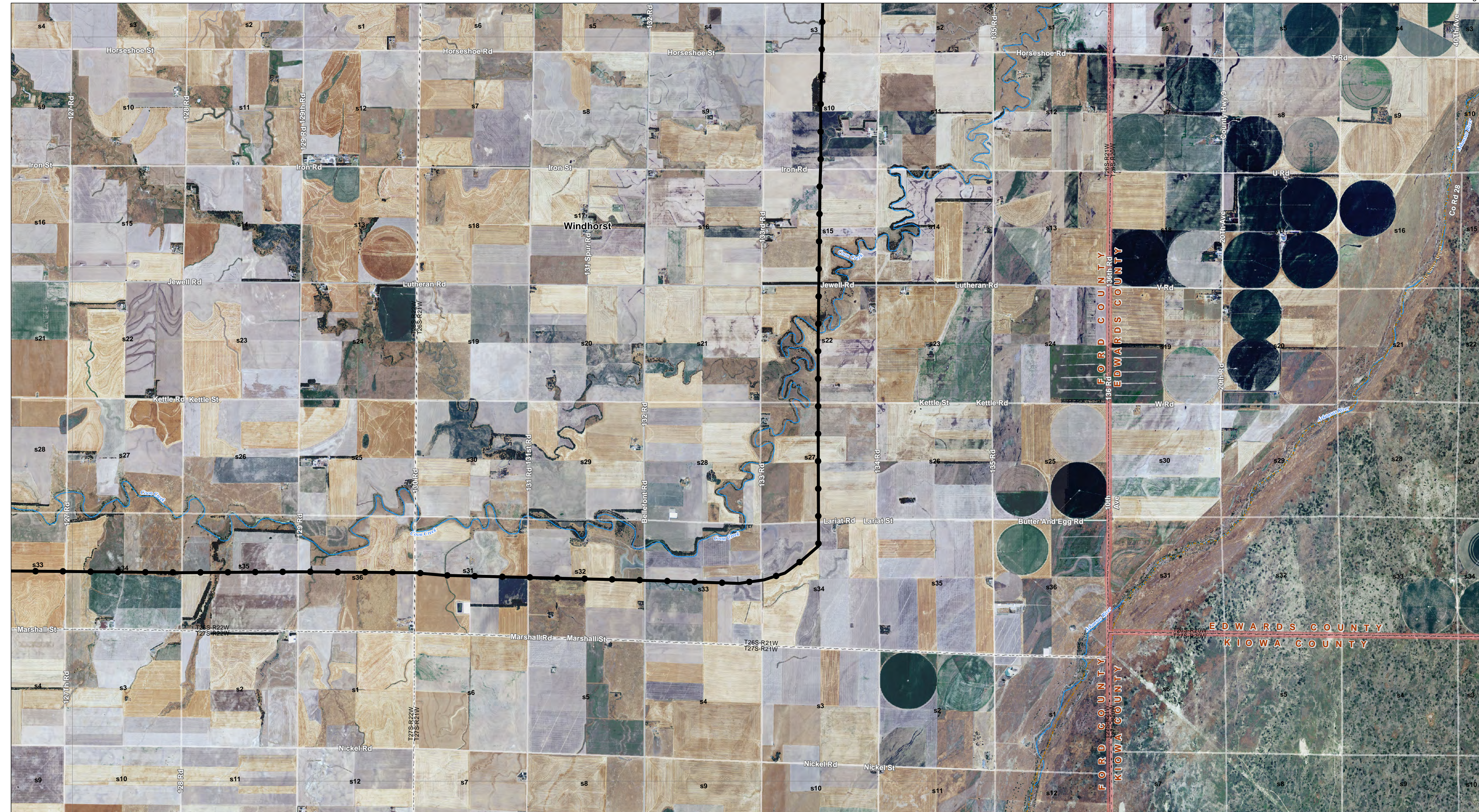


Tile 2 of 42

GRAIN BELT EXPRESS
CLEAN LINE

0 0.25 0.5 1 Miles

1 in = 2,000 feet when produced at a page size of 22" by 34"
or 1 in = 4,000 feet when produced at a page size of 11" by 17"

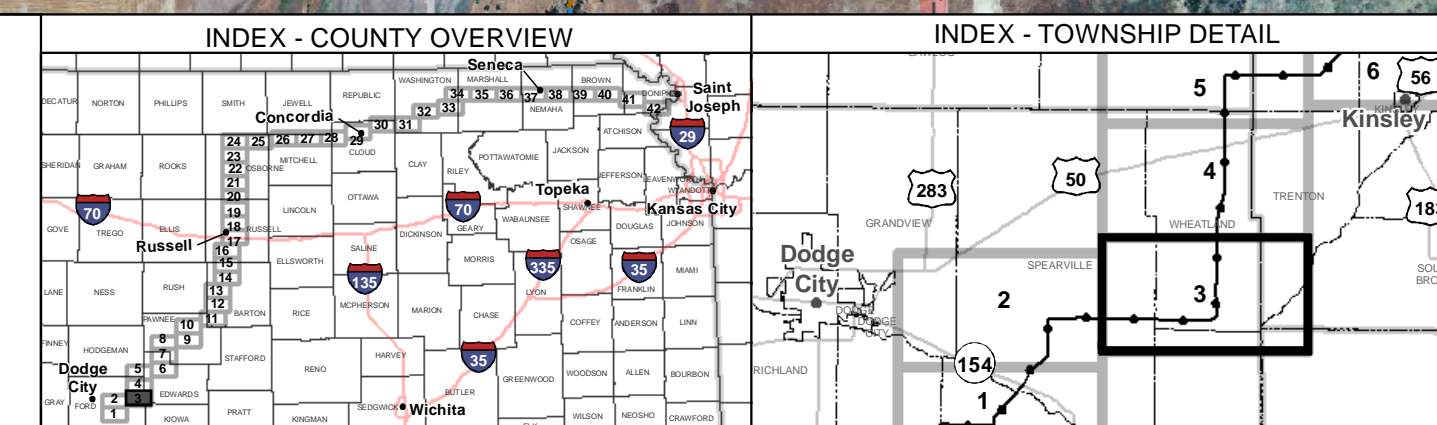


Legend

- Proposed Route
- Trail
- River or Stream
- County Boundary
- Public Land Survey System
- Existing Transmission**
- >230 kV
- 138 kV and 161 kV
- <115 kV
- Railroad
- Private Conservation Land
- Local Conservation Land
- State Land
- Federal Land

Grain Belt Express Clean Line

Kansas Proposed Route

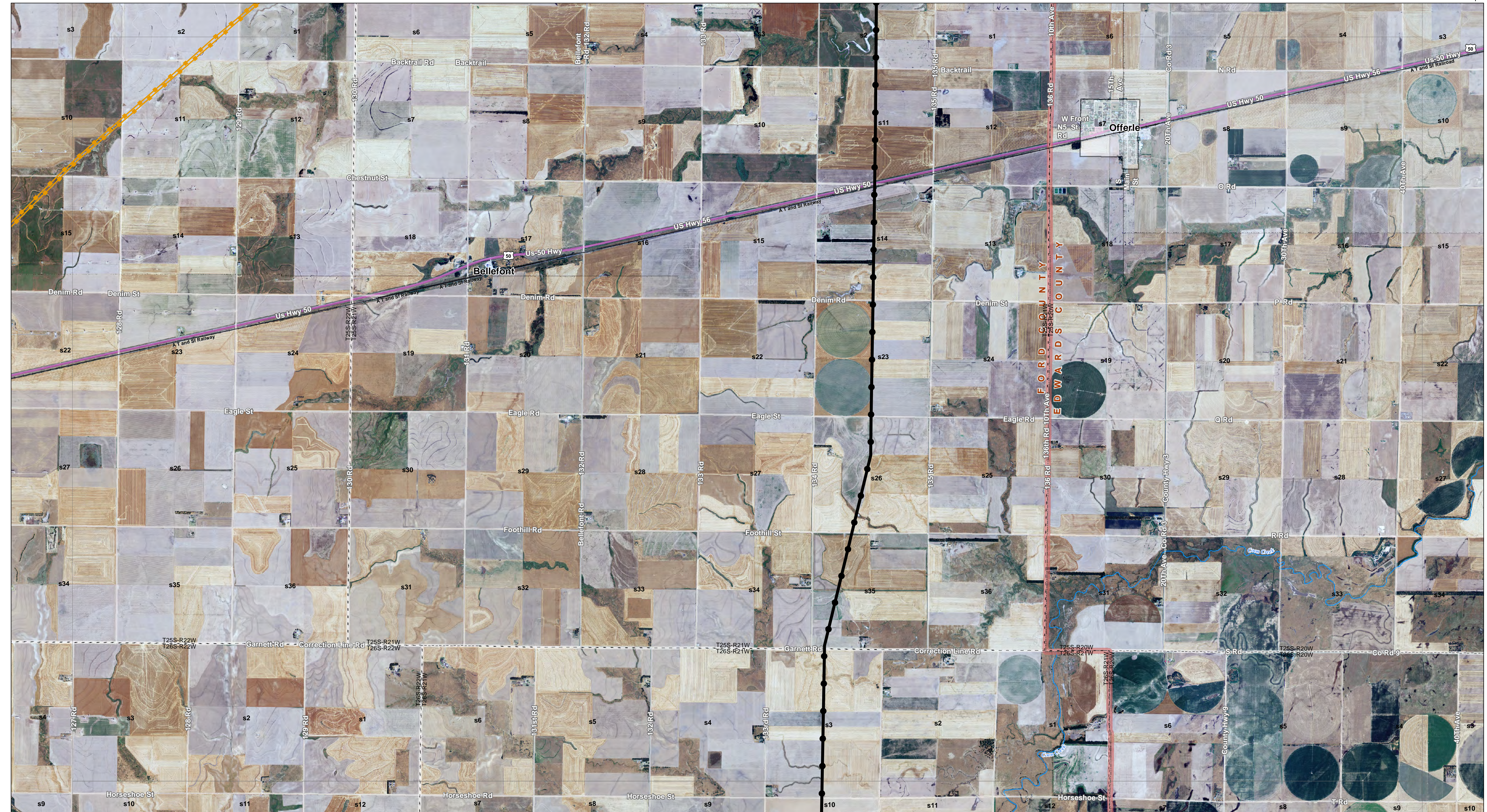


Tile 3 of 42

GRAIN BELT EXPRESS
CLEAN LINE

0 0.25 0.5 1 Miles

1 in = 2,000 feet when produced at a page size of 22" by 34"
or 1 in = 4,000 feet when produced at a page size of 11" by 17"

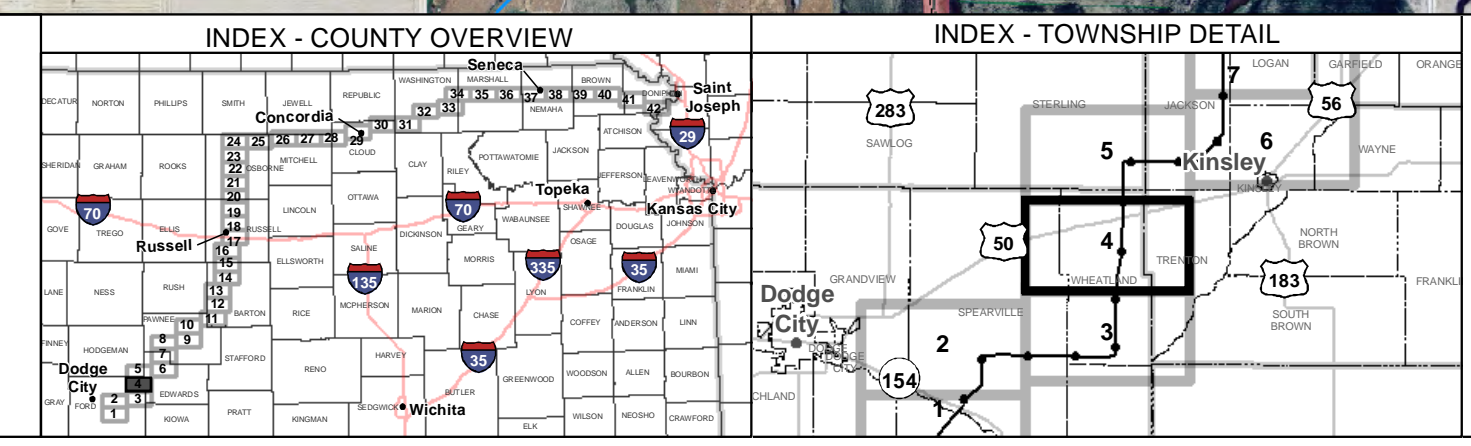


Legend

- Proposed Route
- Trail
- River or Stream
- County Boundary
- Public Land Survey System
- Existing Transmission**
- >230 kV
- 138 kV and 161 kV
- <115 kV
- Railroad
- Private Conservation Land
- Local Conservation Land
- State Land
- Federal Land

Grain Belt Express Clean Line

Kansas Proposed Route



Tile 4 of 42

GRAIN BELT EXPRESS
CLEAN LINE

0 0.25 0.5 1 Miles

1 in = 2,000 feet when produced at a page size of 22" by 34"
or 1 in = 4,000 feet when produced at a page size of 11" by 17"



Legend

- Proposed Route
- Trail
- River or Stream
- County Boundary
- Public Land Survey System

Existing Transmission

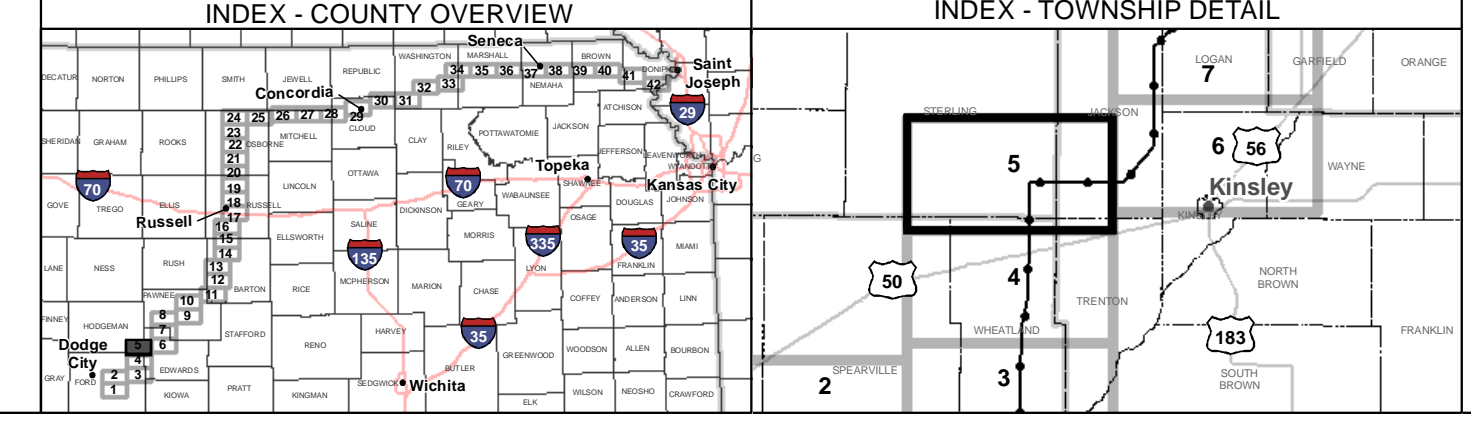
- >230 kV
- 138 kV and 161 kV
- <115 kV
- Railroad

Land Ownership

- Private Conservation Land
- Local Conservation Land
- State Land
- Federal Land

Grain Belt Express Clean Line

Kansas Proposed Route

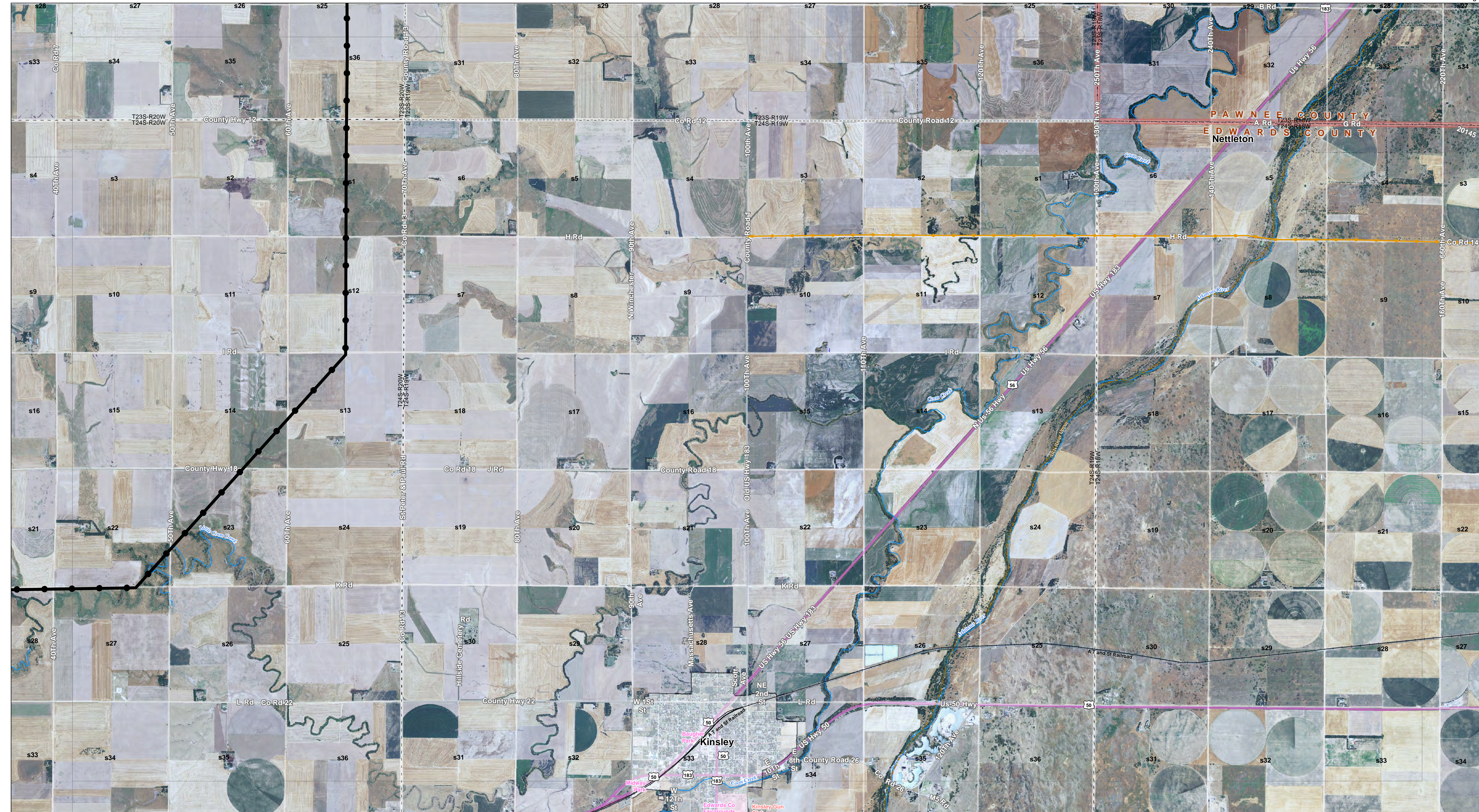


Tile 5 of 42

GRAIN BELT EXPRESS
CLEAN LINE

0 0.25 0.5 1 Miles

1 in = 2,000 feet when produced at a page size of 22" by 34"
or 1 in = 4,000 feet when produced at a page size of 11" by 17"



PAWNEE COUNTY
EDWARDS COUNTY
Nettleton

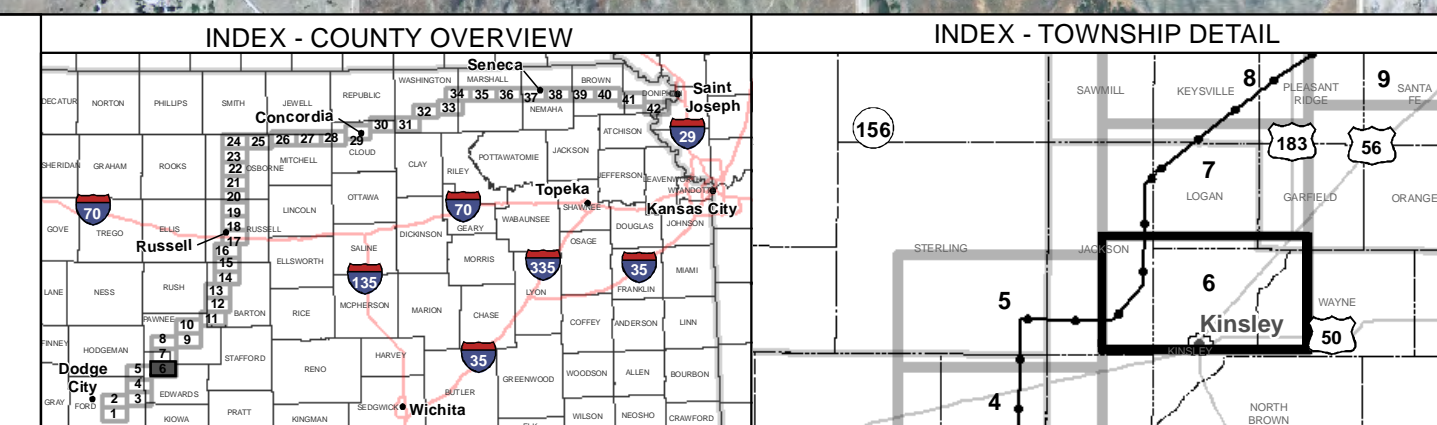
Kinsley

Legend

- Proposed Route
- Trail
- River or Stream
- County Boundary
- Public Land Survey System
- Existing Transmission**
- >230 kV
- 138 kV and 161 kV
- <115 kV
- Railroad
- Private Conservation Land
- Local Conservation Land
- State Land
- Federal Land

Grain Belt Express Clean Line

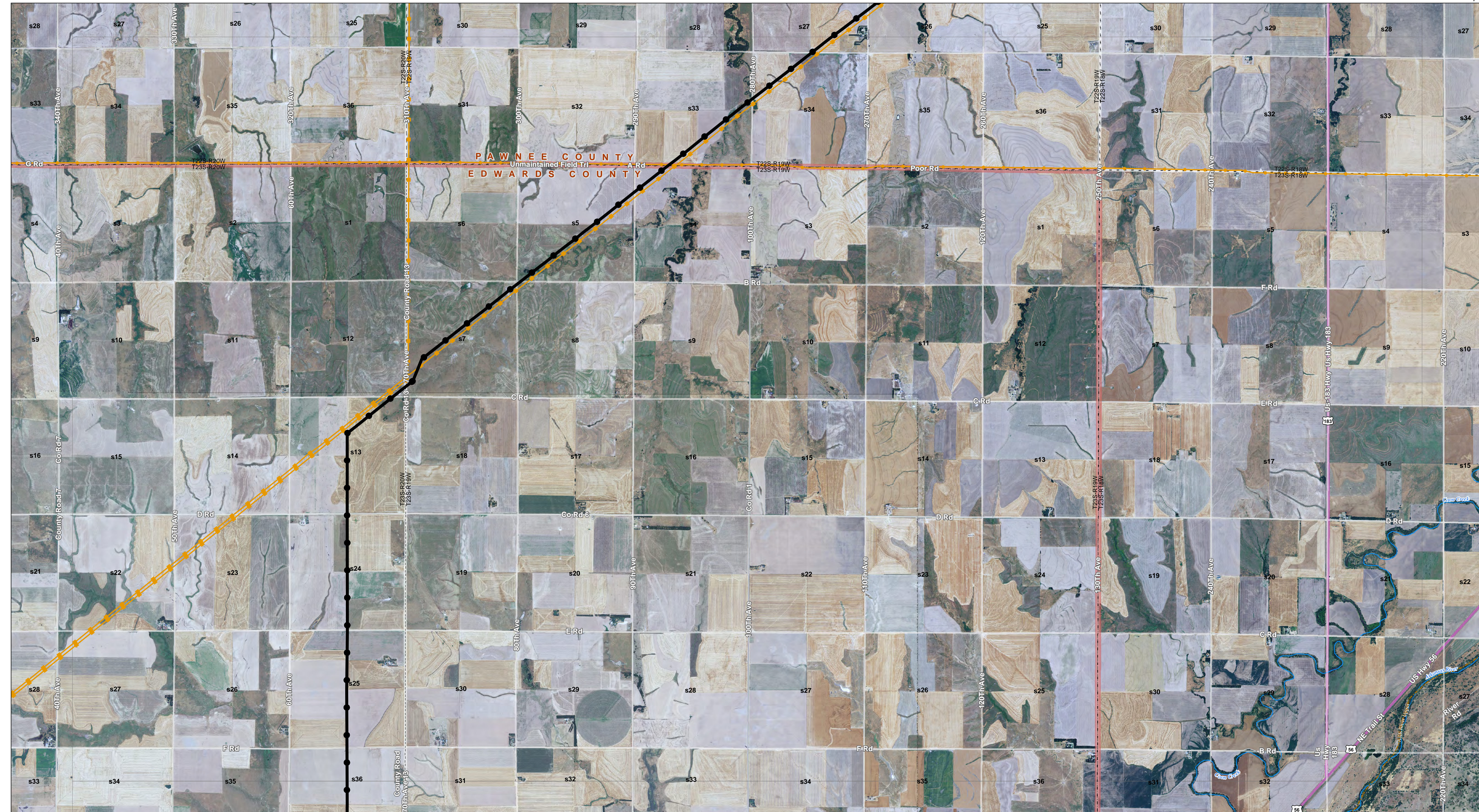
Kansas Proposed Route



Tile 6 of 42

GRAIN BELT EXPRESS
CLEAN LINE

1 in = 2,000 feet when produced at a page size of 22" by 34"
or 1 in = 4,000 feet when produced at a page size of 11" by 17"

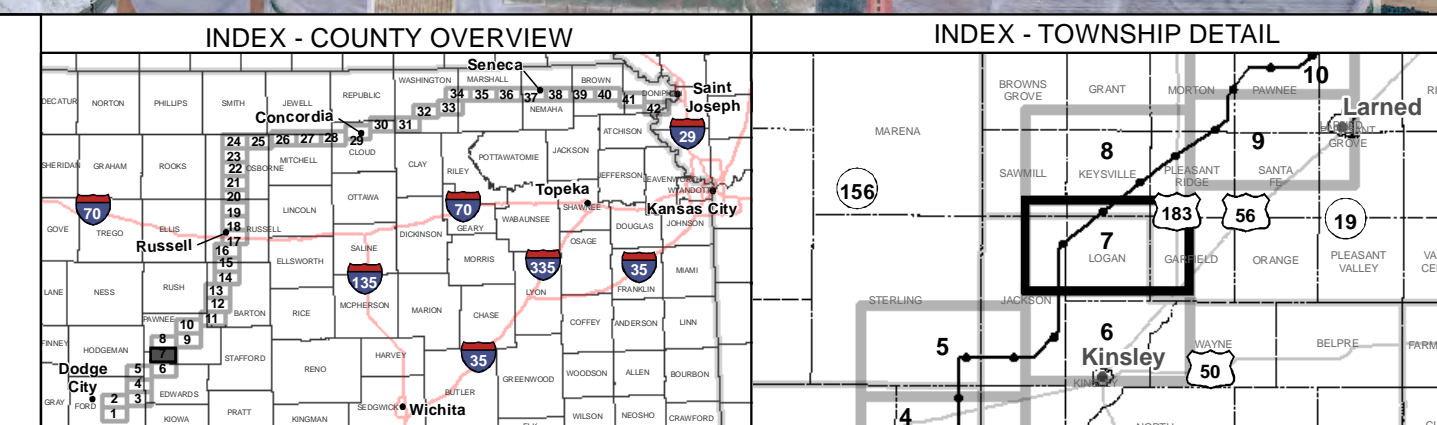


Legend

- Proposed Route
- Trail
- River or Stream
- County Boundary
- Public Land Survey System
- Existing Transmission**
- >230 kV
- 138 kV and 161 kV
- <115 kV
- Railroad
- Private Conservation Land
- Local Conservation Land
- State Land
- Federal Land

Grain Belt Express Clean Line

Kansas Proposed Route

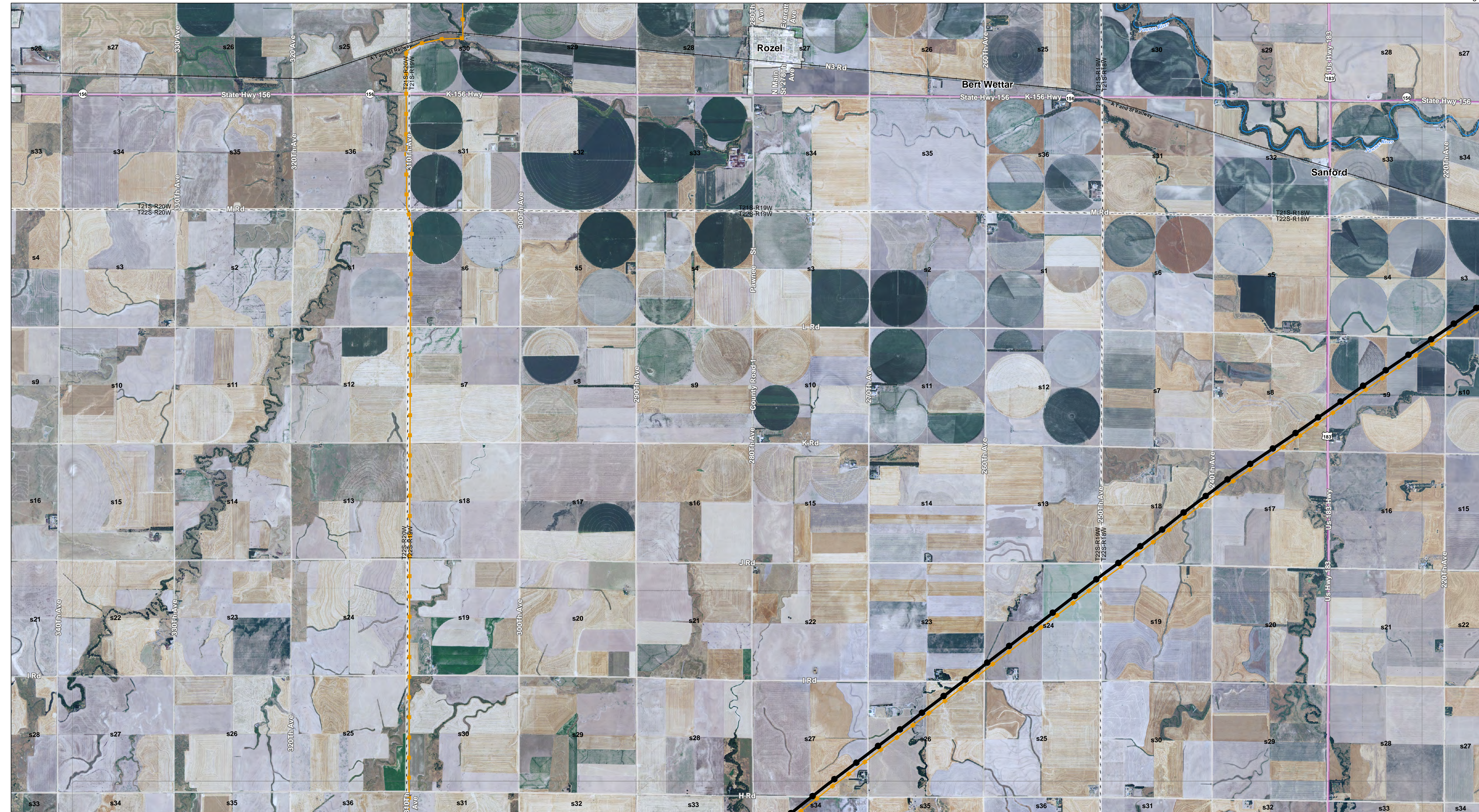


Tile 7 of 42

GRAIN BELT EXPRESS
CLEAN LINE

0 0.25 0.5 1
Miles

1 in = 2,000 feet when produced at a page size of 22" by 34"
or 1 in = 4,000 feet when produced at a page size of 11" by 17"

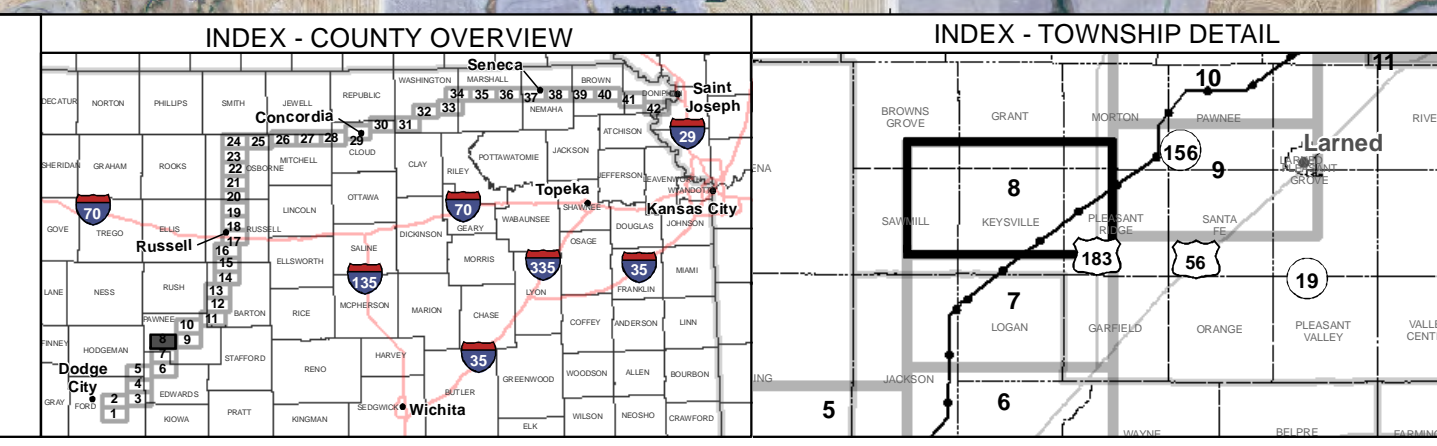


Legend

- Proposed Route
- Trail
- River or Stream
- County Boundary
- Public Land Survey System
- Existing Transmission**
- >230 kV
- 138 kV and 161 kV
- <115 kV
- Railroad
- Private Conservation Land
- Local Conservation Land
- State Land
- Federal Land

Grain Belt Express Clean Line

Kansas Proposed Route

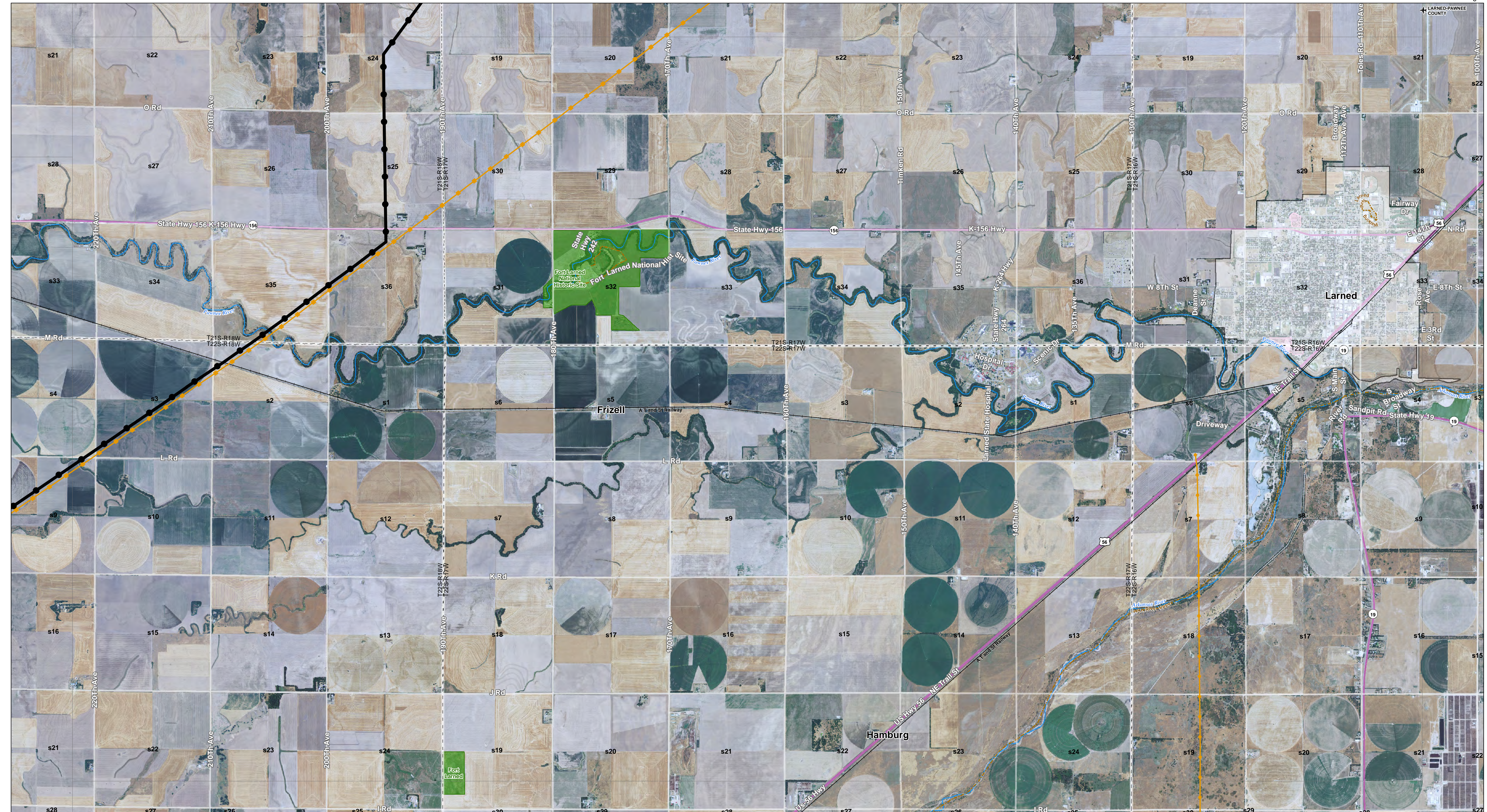


Tile 8 of 42

GRAIN BELT EXPRESS
CLEAN LINE

0 0.25 0.5 1 Miles

1 in = 2,000 feet when produced at a page size of 22" by 34"
or 1 in = 4,000 feet when produced at a page size of 11" by 17"

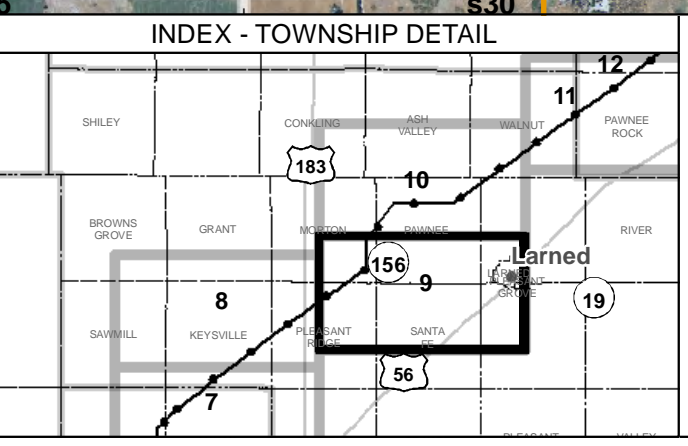
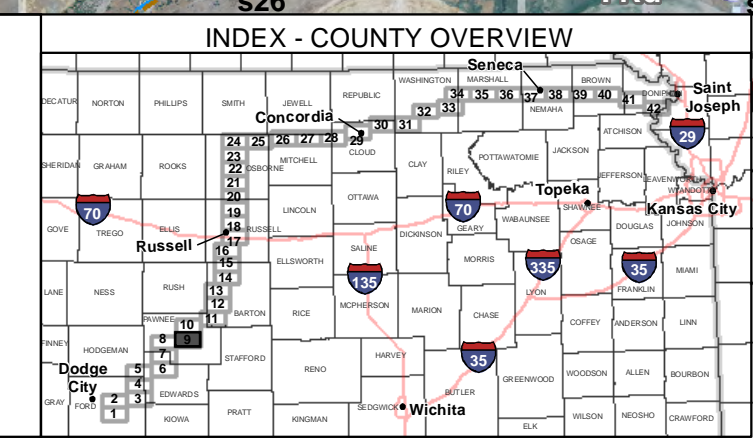


Legend

- Proposed Route
- Trail
- River or Stream
- County Boundary
- Public Land Survey System
- Existing Transmission**
- >230 kV
- 138 kV and 161 kV
- <115 kV
- Railroad
- Private Conservation Land
- Local Conservation Land
- State Land
- Federal Land

Grain Belt Express Clean Line

Kansas Proposed Route

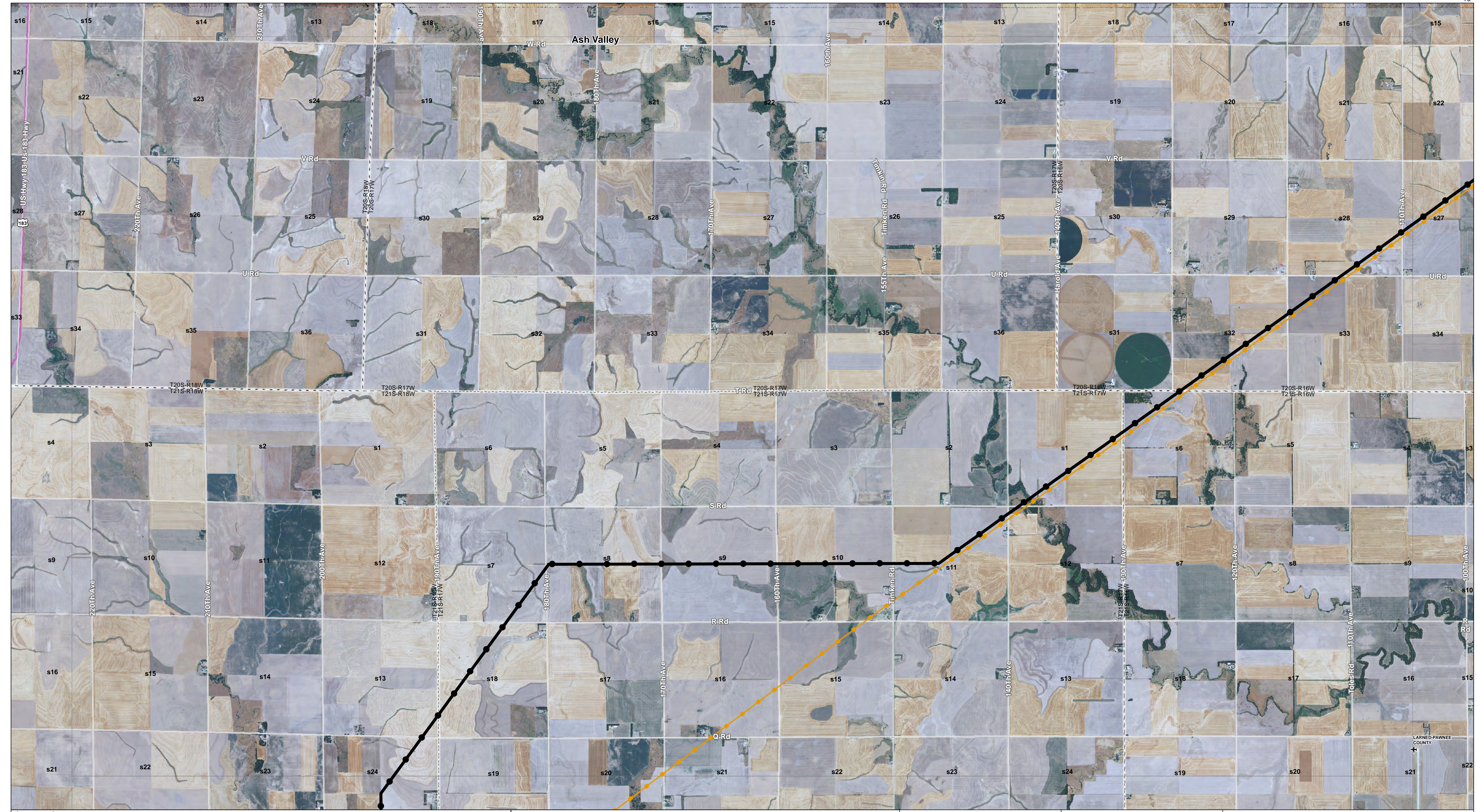


Tile 9 of 42

GRAIN BELT EXPRESS
CLEAN LINE

1 in = 2,000 feet when produced at a page size of 22" by 34"
or 1 in = 4,000 feet when produced at a page size of 11" by 17"

0 0.25 0.5 1 Miles

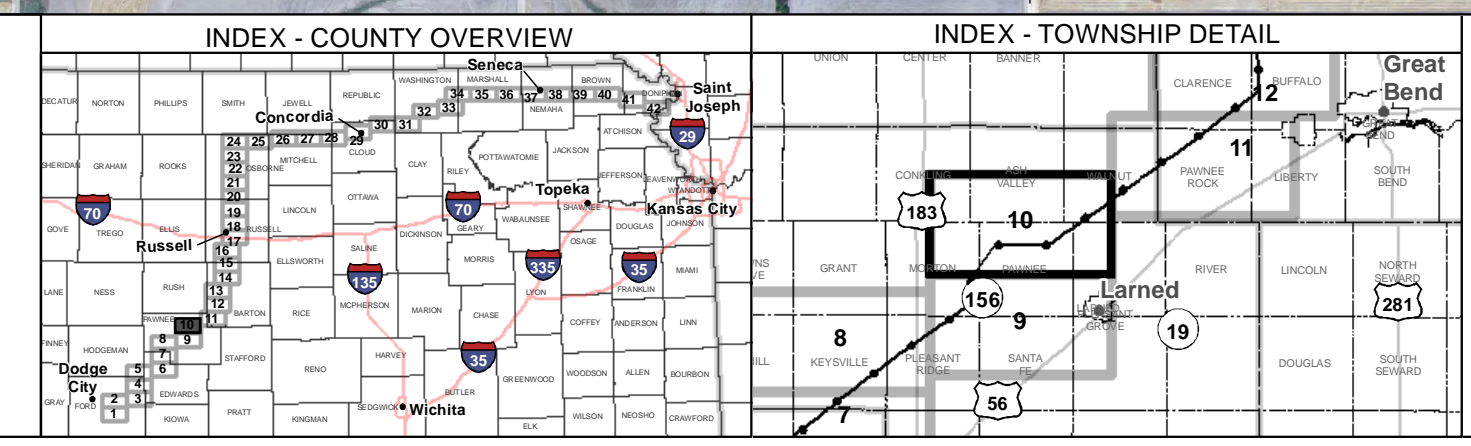


Legend

- Proposed Route
- Trail
- River or Stream
- County Boundary
- Public Land Survey System
- Existing Transmission**
- >230 kV
- 138 kV and 161 kV
- <115 kV
- Railroad
- Private Conservation Land
- Local Conservation Land
- State Land
- Federal Land

Grain Belt Express Clean Line

Kansas Proposed Route

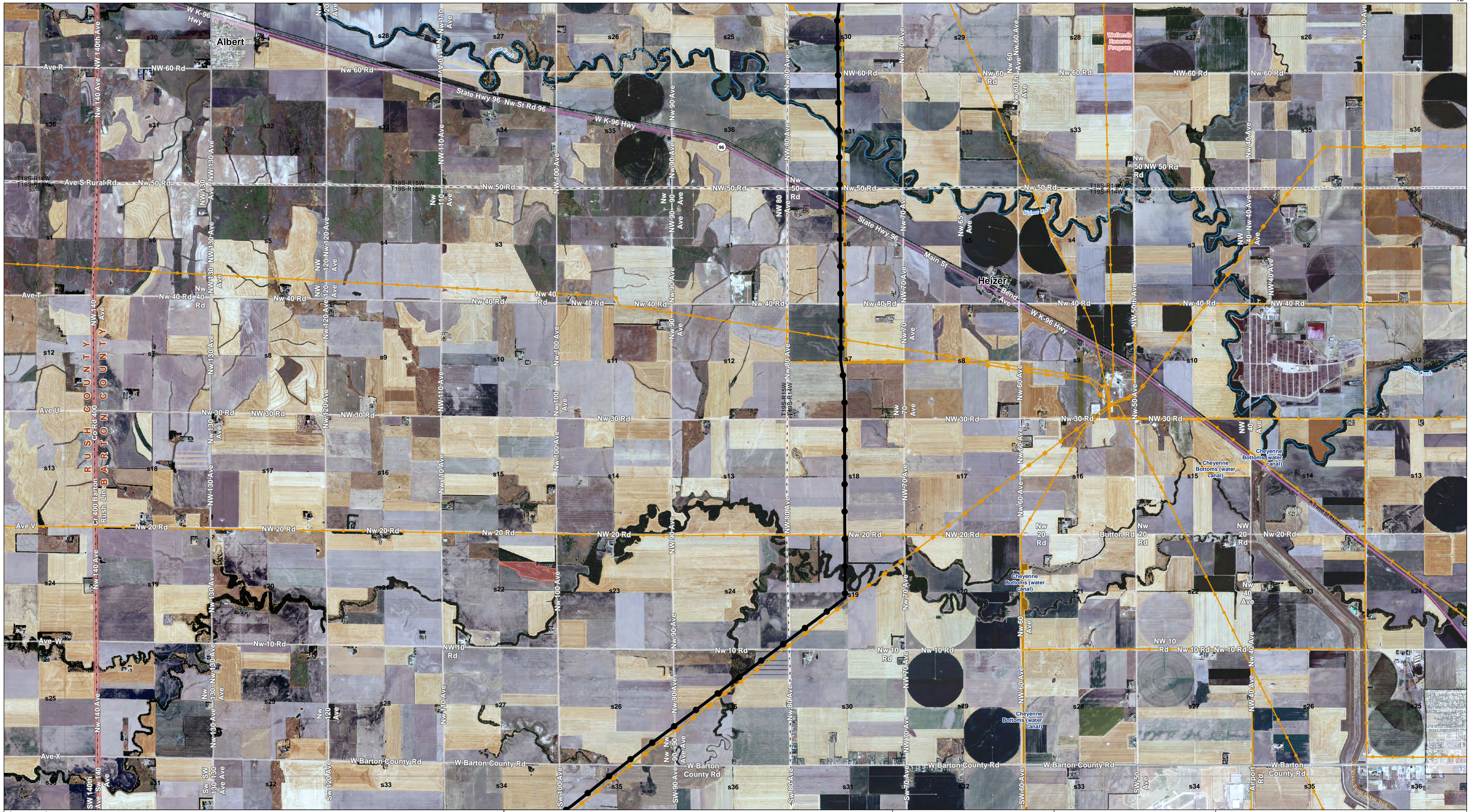


Tile 10 of 42

GRAIN BELT EXPRESS
CLEAN LINE

0 0.25 0.5 1 Miles

1 in = 2,000 feet when produced at a page size of 22" by 34"
or 1 in = 4,000 feet when produced at a page size of 11" by 17"

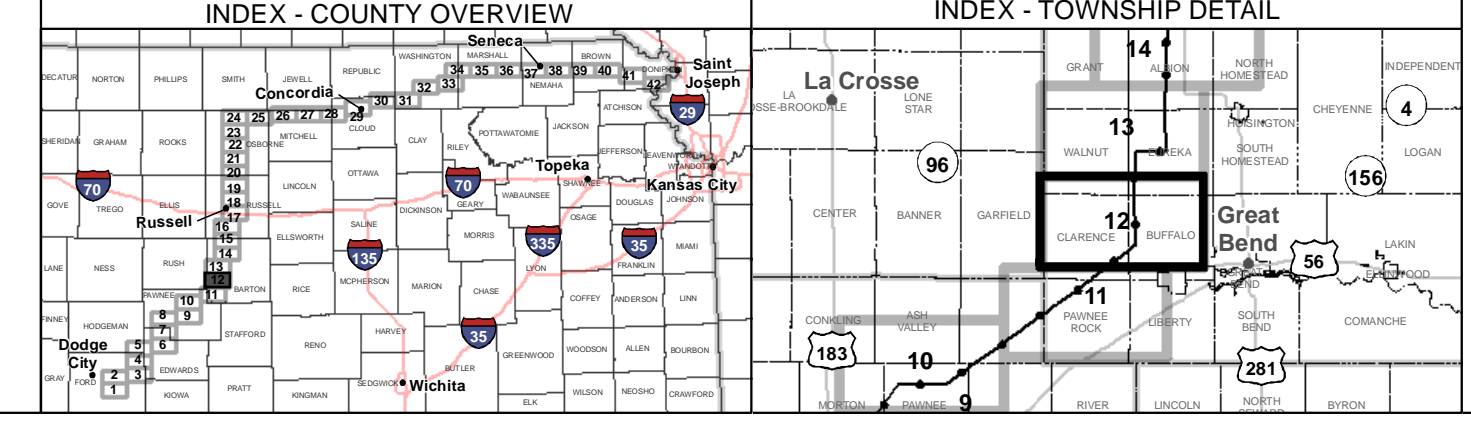


Legend

- Proposed Route
- Trail
- River or Stream
- County Boundary
- Public Land Survey System
- Existing Transmission >230 kV
- Existing Transmission 138 kV and 161 kV
- Existing Transmission <115 kV
- Railroad
- Private Conservation Land
- Local Conservation Land
- State Land
- Federal Land

Grain Belt Express Clean Line

Kansas Proposed Route



Tile 12 of 42

GRAIN BELT EXPRESS
CLEAN LINE

0 0.25 0.5 1 Miles

1 in = 2,000 feet when produced at a page size of 22" by 34"
or 1 in = 4,000 feet when produced at a page size of 11" by 17"

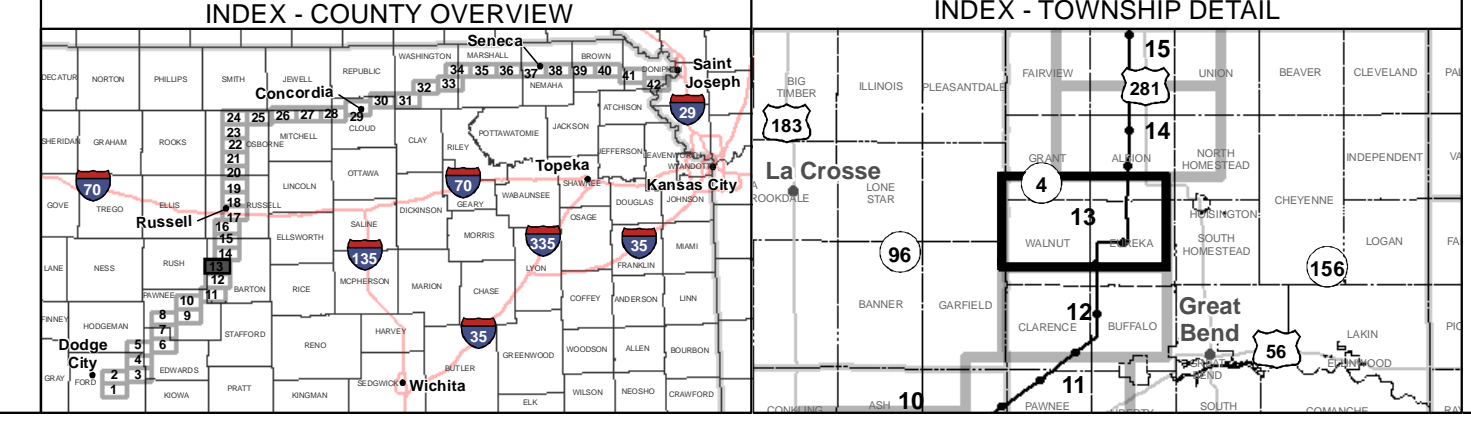


Legend

- Proposed Route
- Trail
- River or Stream
- County Boundary
- Public Land Survey System
- Existing Transmission**
- >230 kV
- 138 kV and 161 kV
- <115 kV
- Railroad
- Private Conservation Land
- Local Conservation Land
- State Land
- Federal Land

Grain Belt Express Clean Line

Kansas Proposed Route



Tile 13 of 42

GRAIN BELT EXPRESS
CLEAN LINE

0 0.25 0.5 1
Miles

1 in = 2,000 feet when produced at a page size of 22" by 34"
or 1 in = 4,000 feet when produced at a page size of 11" by 17"

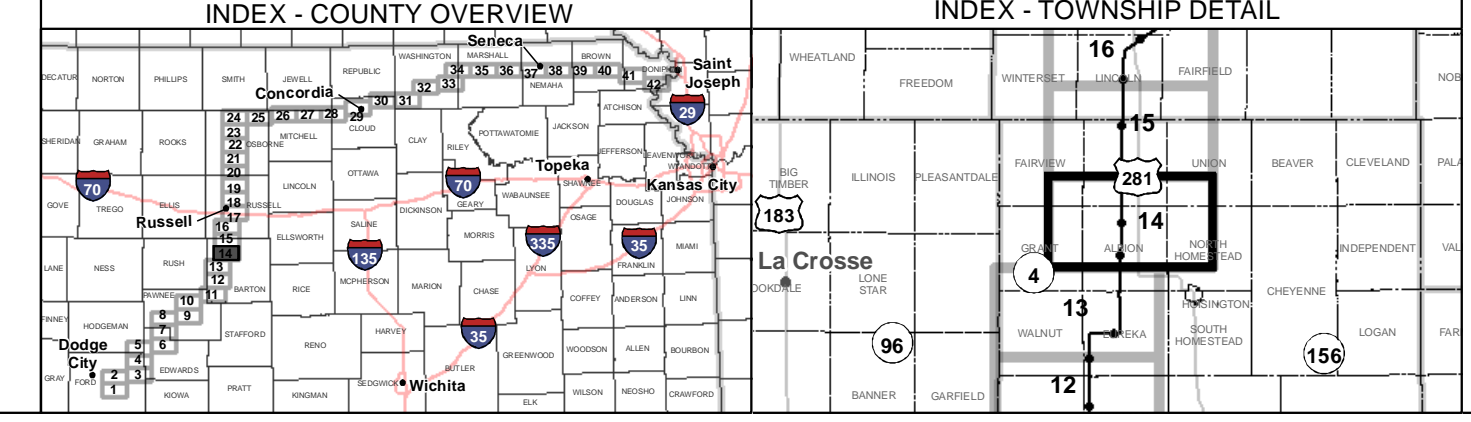


Legend

- Proposed Route
- Trail
- River or Stream
- County Boundary
- Public Land Survey System
- Existing Transmission**
- >230 kV
- 138 kV and 161 kV
- <115 kV
- Railroad
- Private Conservation Land
- Local Conservation Land
- State Land
- Federal Land

Grain Belt Express Clean Line

Kansas Proposed Route



Tile 14 of 42

GRAIN BELT EXPRESS
CLEAN LINE

0 0.25 0.5 1 Miles

1 in = 2,000 feet when produced at a page size of 22" by 34"
or 1 in = 4,000 feet when produced at a page size of 11" by 17"