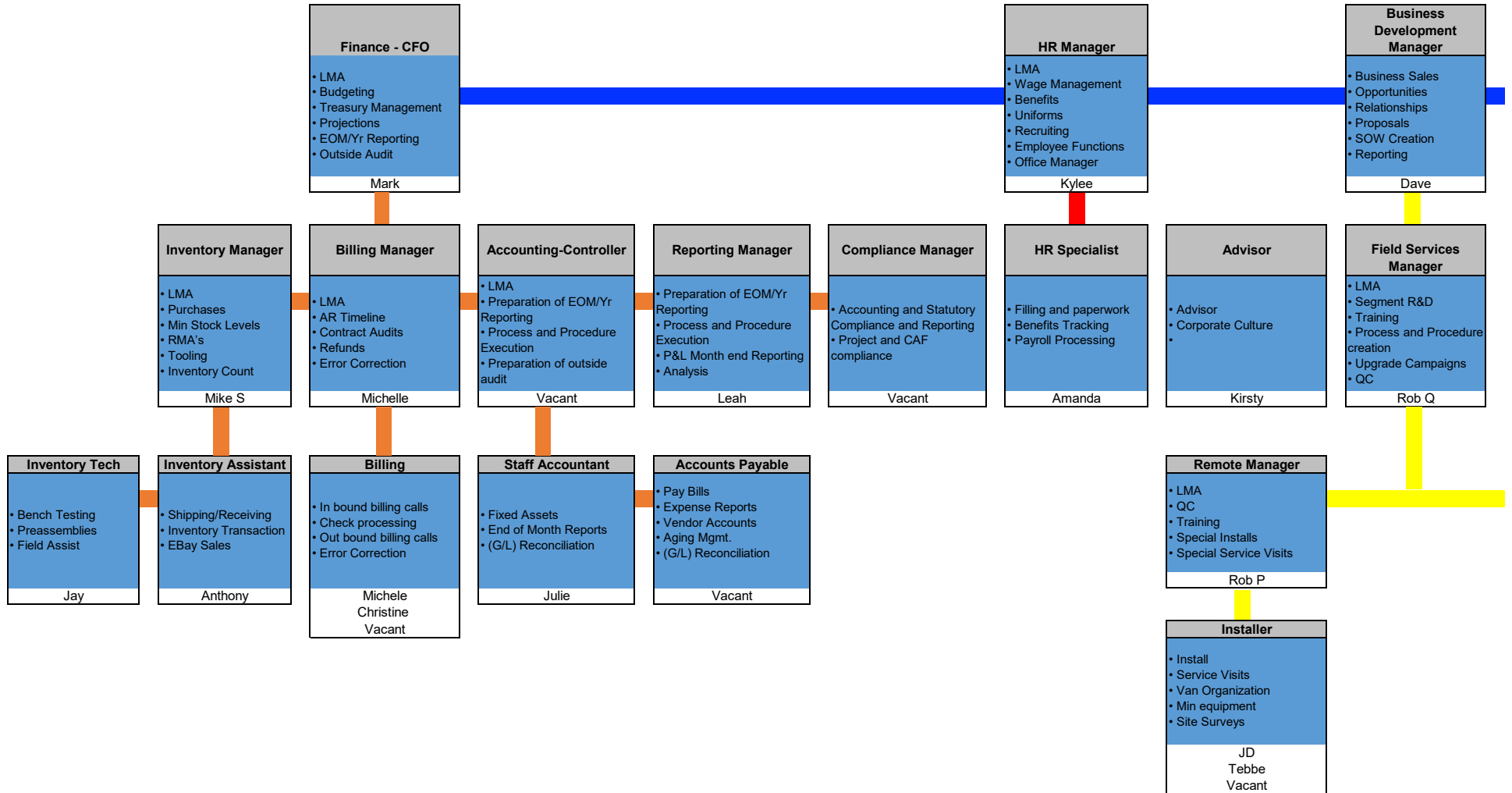


Exhibit A

Organizational Chart



## ACCOUNTABILITY CHART



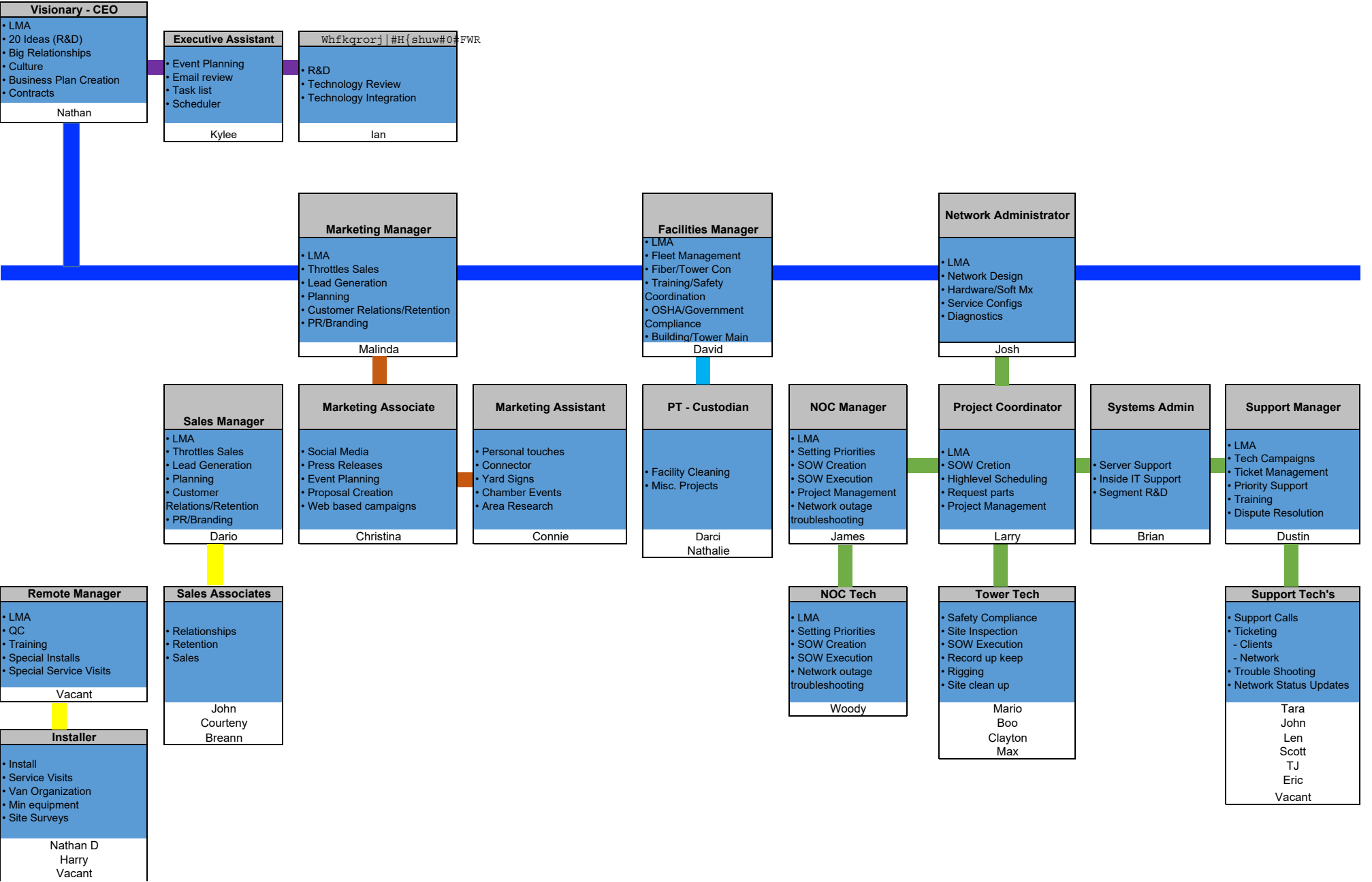
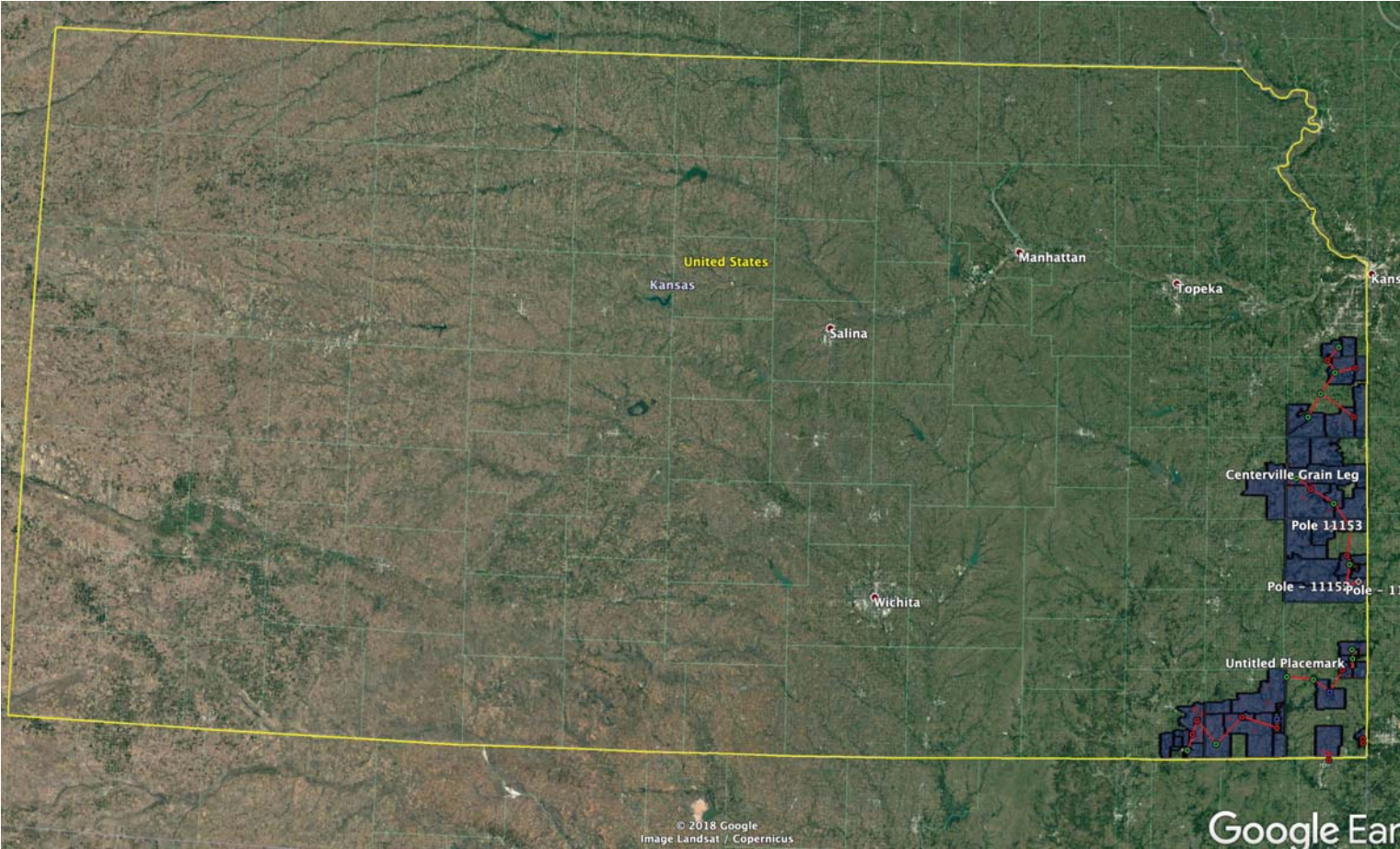


Exhibit B

CAF II Award Areas

# State Report For Kansas



County	CBGCount	Locations
Labette	7	39
Anderson	2	2
Bourbon	8	57
Cherokee	5	72
Johnson	3	17
Linn	6	65
Miami	6	31
Montgomery	9	67
Crawford	5	64
	51	414

bidder	block_id	item	state	county	census_id
Wisper ISP, Inc	200039537003166	KS-003-9537003	KS	Anderson	200039537003
Wisper ISP, Inc	200039536001450	KS-003-9536001	KS	Anderson	200039536001
Wisper ISP, Inc	200119559004019	KS-011-9559004	KS	Bourbon	200119559004
Wisper ISP, Inc	200119559002006	KS-011-9559002	KS	Bourbon	200119559002
Wisper ISP, Inc	200119559001058	KS-011-9559001	KS	Bourbon	200119559001
Wisper ISP, Inc	200119558001162	KS-011-9558001	KS	Bourbon	200119558001
Wisper ISP, Inc	200119558001077	KS-011-9558001	KS	Bourbon	200119558001
Wisper ISP, Inc	200119558001027	KS-011-9558001	KS	Bourbon	200119558001
Wisper ISP, Inc	200119558001005	KS-011-9558001	KS	Bourbon	200119558001
Wisper ISP, Inc	200119557002335	KS-011-9557002	KS	Bourbon	200119557002
Wisper ISP, Inc	200119557002238	KS-011-9557002	KS	Bourbon	200119557002
Wisper ISP, Inc	200119557002203	KS-011-9557002	KS	Bourbon	200119557002
Wisper ISP, Inc	200119557002081	KS-011-9557002	KS	Bourbon	200119557002
Wisper ISP, Inc	200119557002080	KS-011-9557002	KS	Bourbon	200119557002
Wisper ISP, Inc	200119557002076	KS-011-9557002	KS	Bourbon	200119557002
Wisper ISP, Inc	200119557002055	KS-011-9557002	KS	Bourbon	200119557002
Wisper ISP, Inc	200119557001002	KS-011-9557001	KS	Bourbon	200119557001
Wisper ISP, Inc	200119556002144	KS-011-9556002	KS	Bourbon	200119556002
Wisper ISP, Inc	200119556002141	KS-011-9556002	KS	Bourbon	200119556002
Wisper ISP, Inc	200119556002103	KS-011-9556002	KS	Bourbon	200119556002
Wisper ISP, Inc	200119556001233	KS-011-9556001	KS	Bourbon	200119556001
Wisper ISP, Inc	200219585004069	KS-021-9585004	KS	Cherokee	200219585004
Wisper ISP, Inc	200219585004019	KS-021-9585004	KS	Cherokee	200219585004
Wisper ISP, Inc	200219585002049	KS-021-9585002	KS	Cherokee	200219585002
Wisper ISP, Inc	200219585001081	KS-021-9585001	KS	Cherokee	200219585001
Wisper ISP, Inc	200219585001058	KS-021-9585001	KS	Cherokee	200219585001
Wisper ISP, Inc	200219582002183	KS-021-9582002	KS	Cherokee	200219582002
Wisper ISP, Inc	200219582002181	KS-021-9582002	KS	Cherokee	200219582002
Wisper ISP, Inc	200219582002157	KS-021-9582002	KS	Cherokee	200219582002
Wisper ISP, Inc	200219582002156	KS-021-9582002	KS	Cherokee	200219582002
Wisper ISP, Inc	200219582002155	KS-021-9582002	KS	Cherokee	200219582002
Wisper ISP, Inc	200219582002154	KS-021-9582002	KS	Cherokee	200219582002
Wisper ISP, Inc	200219582002153	KS-021-9582002	KS	Cherokee	200219582002
Wisper ISP, Inc	200219582002151	KS-021-9582002	KS	Cherokee	200219582002
Wisper ISP, Inc	200219582002150	KS-021-9582002	KS	Cherokee	200219582002
Wisper ISP, Inc	200219582002147	KS-021-9582002	KS	Cherokee	200219582002
Wisper ISP, Inc	200219582002132	KS-021-9582002	KS	Cherokee	200219582002
Wisper ISP, Inc	200219582002123	KS-021-9582002	KS	Cherokee	200219582002
Wisper ISP, Inc	200219582002118	KS-021-9582002	KS	Cherokee	200219582002
Wisper ISP, Inc	200219582002116	KS-021-9582002	KS	Cherokee	200219582002
Wisper ISP, Inc	200219581001028	KS-021-9581001	KS	Cherokee	200219581001
Wisper ISP, Inc	200379576002139	KS-037-9576002	KS	Crawford	200379576002
Wisper ISP, Inc	200379576002113	KS-037-9576002	KS	Crawford	200379576002
Wisper ISP, Inc	200379576002033	KS-037-9576002	KS	Crawford	200379576002
Wisper ISP, Inc	200379576002019	KS-037-9576002	KS	Crawford	200379576002
Wisper ISP, Inc	200379573001121	KS-037-9573001	KS	Crawford	200379573001

Wisper ISP, Inc	200379573001116	KS-037-9573001	KS	Crawford	200379573001
Wisper ISP, Inc	200379573001103	KS-037-9573001	KS	Crawford	200379573001
Wisper ISP, Inc	200379573001077	KS-037-9573001	KS	Crawford	200379573001
Wisper ISP, Inc	200379573001071	KS-037-9573001	KS	Crawford	200379573001
Wisper ISP, Inc	200379573001039	KS-037-9573001	KS	Crawford	200379573001
Wisper ISP, Inc	200379572001040	KS-037-9572001	KS	Crawford	200379572001
Wisper ISP, Inc	200379572001035	KS-037-9572001	KS	Crawford	200379572001
Wisper ISP, Inc	200379572001026	KS-037-9572001	KS	Crawford	200379572001
Wisper ISP, Inc	200379572001006	KS-037-9572001	KS	Crawford	200379572001
Wisper ISP, Inc	200379570002026	KS-037-9570002	KS	Crawford	200379570002
Wisper ISP, Inc	200379569001229	KS-037-9569001	KS	Crawford	200379569001
Wisper ISP, Inc	200379569001197	KS-037-9569001	KS	Crawford	200379569001
Wisper ISP, Inc	200379569001109	KS-037-9569001	KS	Crawford	200379569001
Wisper ISP, Inc	200910538041038	KS-091-0538041	KS	Johnson	200910538041
Wisper ISP, Inc	200910538012107	KS-091-0538012	KS	Johnson	200910538012
Wisper ISP, Inc	200910538012024	KS-091-0538012	KS	Johnson	200910538012
Wisper ISP, Inc	200910538012013	KS-091-0538012	KS	Johnson	200910538012
Wisper ISP, Inc	200910533011005	KS-091-0533011	KS	Johnson	200910533011
Wisper ISP, Inc	200999508001292	KS-099-9508001	KS	Labette	200999508001
Wisper ISP, Inc	200999508001029	KS-099-9508001	KS	Labette	200999508001
Wisper ISP, Inc	200999508001017	KS-099-9508001	KS	Labette	200999508001
Wisper ISP, Inc	200999508001016	KS-099-9508001	KS	Labette	200999508001
Wisper ISP, Inc	200999508001006	KS-099-9508001	KS	Labette	200999508001
Wisper ISP, Inc	200999507003008	KS-099-9507003	KS	Labette	200999507003
Wisper ISP, Inc	200999506003309	KS-099-9506003	KS	Labette	200999506003
Wisper ISP, Inc	200999506003305	KS-099-9506003	KS	Labette	200999506003
Wisper ISP, Inc	200999506003145	KS-099-9506003	KS	Labette	200999506003
Wisper ISP, Inc	200999506003138	KS-099-9506003	KS	Labette	200999506003
Wisper ISP, Inc	200999506003058	KS-099-9506003	KS	Labette	200999506003
Wisper ISP, Inc	200999506003030	KS-099-9506003	KS	Labette	200999506003
Wisper ISP, Inc	200999506003017	KS-099-9506003	KS	Labette	200999506003
Wisper ISP, Inc	200999506003010	KS-099-9506003	KS	Labette	200999506003
Wisper ISP, Inc	200999506001150	KS-099-9506001	KS	Labette	200999506001
Wisper ISP, Inc	200999506001127	KS-099-9506001	KS	Labette	200999506001
Wisper ISP, Inc	200999506001069	KS-099-9506001	KS	Labette	200999506001
Wisper ISP, Inc	200999506001059	KS-099-9506001	KS	Labette	200999506001
Wisper ISP, Inc	200999506001056	KS-099-9506001	KS	Labette	200999506001
Wisper ISP, Inc	200999506001025	KS-099-9506001	KS	Labette	200999506001
Wisper ISP, Inc	200999505004113	KS-099-9505004	KS	Labette	200999505004
Wisper ISP, Inc	200999505003561	KS-099-9505003	KS	Labette	200999505003
Wisper ISP, Inc	200999505003532	KS-099-9505003	KS	Labette	200999505003
Wisper ISP, Inc	200999505003493	KS-099-9505003	KS	Labette	200999505003
Wisper ISP, Inc	200999505003466	KS-099-9505003	KS	Labette	200999505003
Wisper ISP, Inc	200999505003464	KS-099-9505003	KS	Labette	200999505003
Wisper ISP, Inc	200999505003448	KS-099-9505003	KS	Labette	200999505003
Wisper ISP, Inc	200999505003433	KS-099-9505003	KS	Labette	200999505003
Wisper ISP, Inc	200999505003399	KS-099-9505003	KS	Labette	200999505003



[illegible]

Wisper ISP, Inc	201079551005099	KS-107-9551005	KS	Linn	201079551005
Wisper ISP, Inc	201079551005094	KS-107-9551005	KS	Linn	201079551005
Wisper ISP, Inc	201079551005073	KS-107-9551005	KS	Linn	201079551005
Wisper ISP, Inc	201079551002196	KS-107-9551002	KS	Linn	201079551002
Wisper ISP, Inc	201079551002095	KS-107-9551002	KS	Linn	201079551002
Wisper ISP, Inc	201079551002026	KS-107-9551002	KS	Linn	201079551002
Wisper ISP, Inc	201079551001154	KS-107-9551001	KS	Linn	201079551001
Wisper ISP, Inc	201079551001116	KS-107-9551001	KS	Linn	201079551001
Wisper ISP, Inc	201079551001031	KS-107-9551001	KS	Linn	201079551001
Wisper ISP, Inc	201211007007125	KS-121-1007007	KS	Miami	201211007007
Wisper ISP, Inc	201211007007059	KS-121-1007007	KS	Miami	201211007007
Wisper ISP, Inc	201211005002127	KS-121-1005002	KS	Miami	201211005002
Wisper ISP, Inc	201211005002062	KS-121-1005002	KS	Miami	201211005002
Wisper ISP, Inc	201211005001160	KS-121-1005001	KS	Miami	201211005001
Wisper ISP, Inc	201211004001141	KS-121-1004001	KS	Miami	201211004001
Wisper ISP, Inc	201211004001122	KS-121-1004001	KS	Miami	201211004001
Wisper ISP, Inc	201211003001004	KS-121-1003001	KS	Miami	201211003001
Wisper ISP, Inc	201211002002256	KS-121-1002002	KS	Miami	201211002002
Wisper ISP, Inc	201211002002208	KS-121-1002002	KS	Miami	201211002002
Wisper ISP, Inc	201211002002026	KS-121-1002002	KS	Miami	201211002002
Wisper ISP, Inc	201211002002023	KS-121-1002002	KS	Miami	201211002002
Wisper ISP, Inc	201211002002001	KS-121-1002002	KS	Miami	201211002002
Wisper ISP, Inc	201259512002044	KS-125-9512002	KS	Montgomer	201259512002
Wisper ISP, Inc	201259511001030	KS-125-9511001	KS	Montgomer	201259511001
Wisper ISP, Inc	201259511001014	KS-125-9511001	KS	Montgomer	201259511001
Wisper ISP, Inc	201259511001003	KS-125-9511001	KS	Montgomer	201259511001
Wisper ISP, Inc	201259509002132	KS-125-9509002	KS	Montgomer	201259509002
Wisper ISP, Inc	201259509002000	KS-125-9509002	KS	Montgomer	201259509002
Wisper ISP, Inc	201259509001112	KS-125-9509001	KS	Montgomer	201259509001
Wisper ISP, Inc	201259509001111	KS-125-9509001	KS	Montgomer	201259509001
Wisper ISP, Inc	201259509001104	KS-125-9509001	KS	Montgomer	201259509001
Wisper ISP, Inc	201259509001102	KS-125-9509001	KS	Montgomer	201259509001
Wisper ISP, Inc	201259509001075	KS-125-9509001	KS	Montgomer	201259509001
Wisper ISP, Inc	201259509001074	KS-125-9509001	KS	Montgomer	201259509001
Wisper ISP, Inc	201259509001071	KS-125-9509001	KS	Montgomer	201259509001
Wisper ISP, Inc	201259509001066	KS-125-9509001	KS	Montgomer	201259509001
Wisper ISP, Inc	201259509001041	KS-125-9509001	KS	Montgomer	201259509001
Wisper ISP, Inc	201259508003006	KS-125-9508003	KS	Montgomer	201259508003
Wisper ISP, Inc	201259508002076	KS-125-9508002	KS	Montgomer	201259508002
Wisper ISP, Inc	201259508002029	KS-125-9508002	KS	Montgomer	201259508002
Wisper ISP, Inc	201259508001048	KS-125-9508001	KS	Montgomer	201259508001
Wisper ISP, Inc	201259507005113	KS-125-9507005	KS	Montgomer	201259507005
Wisper ISP, Inc	201259507003197	KS-125-9507003	KS	Montgomer	201259507003
Wisper ISP, Inc	201259507003190	KS-125-9507003	KS	Montgomer	201259507003
Wisper ISP, Inc	201259507003188	KS-125-9507003	KS	Montgomer	201259507003
Wisper ISP, Inc	201259507003160	KS-125-9507003	KS	Montgomer	201259507003
Wisper ISP, Inc	201259507003134	KS-125-9507003	KS	Montgomer	201259507003

Wisper ISP, Inc	201259507003050	KS-125-9507003	KS	Montgomer	201259507003
Wisper ISP, Inc	201259507003049	KS-125-9507003	KS	Montgomer	201259507003
Wisper ISP, Inc	201259507003047	KS-125-9507003	KS	Montgomer	201259507003
Wisper ISP, Inc	201259507003041	KS-125-9507003	KS	Montgomer	201259507003
Wisper ISP, Inc	201259507003037	KS-125-9507003	KS	Montgomer	201259507003
Wisper ISP, Inc	201259507003019	KS-125-9507003	KS	Montgomer	201259507003
Wisper ISP, Inc	201259507003016	KS-125-9507003	KS	Montgomer	201259507003
Wisper ISP, Inc	201259507003010	KS-125-9507003	KS	Montgomer	201259507003
Wisper ISP, Inc	201259507003009	KS-125-9507003	KS	Montgomer	201259507003

Exhibit C

Management

**Nathan Stooke- Owner/CEO**

In the last 15 years, Nathan Stooke went from programming PCs to building Wisper into a successful multi-million-dollar company Based in St Louis, MO , Wisper now services Arkansas, Illinois, Kansas, Missouri, and Oklahoma.

As CEO of Wisper, Nathan has provided high speed Internet service to tens of thousands of happy customers; many in rural areas where previous service providers had been spotty or nonexistent.

Stooke is a well-respected businessman in the St. Louis area; he was selected as a "Top 30 Under 30" by the St. Louis Business Journal and named on the list of the "Top 100 St. Louisans to Know" by the *St. Louis Small Business Monthly*. Last year Stooke was named *Top 100 for John C. Maxwell Awards*. In 2011, Stooke made the decision to put profit back into his network and he upgraded the entire infrastructure, giving current customers increased bandwidth at no additional cost. With a 96.6% customer satisfaction rating, his commitment to service has helped cultivate loyal customers as well as a dedicated workforce. Recently, Wisper was named one of the Top 20 Small Businesses in 2014 and one of the 50 Fastest-Growing companies in St. Louis by *St. Louis Small Business Monthly*.

Nathan credits his battle with Dyslexia and his competitive nature gleaned from hours of intense training, which earned him a spot on the U.S National Swim Team as his catalyst for success. His vision is to create standards in the wireless industry, establish Wisper as a household name, and continue to serve exceptional customers in rural and metropolitan communities.

Nathan was recently elected President of the Wireless Internet Service Provider Association (WISPA) board and is a founding member of the Dyslexic Advantage, an educational, scientific and charitable organization that improves the lives of those with Dyslexia. Stooke received his undergraduate degree and his MBA from Southern Illinois University at Carbondale.

**Ian Ellison- CTO**

Ian Ellison is the Chief Technology Officer for Wisper ISP, a role he has held since 2006.

Previously, he served as a Network Administrator for another internet provider. Ian got his start in the internet industry by working for a dial-up company. Altogether, Ian brings 24 years of ISP operating experience and likes to give back to the industry by participating in several industry conferences as well as lending his expertise by teaching at Wisper University. Ian has a strong background in network engineering, systems administration and software design. Since 2009, Ian has also been a co-owner of a WISP in Southern IL which has allowed him to bring a unique mix of business and technical expertise to Wisper.

### **Mark Albertyn- CFO**

Mark Albertyn is an accomplished professional with over 25 years of experience in the financial field and is a qualified Chartered Accountant (South Africa). Mark holds a Bachelor of Commerce Degree in Accounting from the University of Pretoria as well a post graduate Honors Degree and Certificate in the Theory of Accounting from the University of Pretoria. Mark has been with Wisper ISP since his appointment as the Chief Financial Officer in August 2017. Mark brings with him a wealth of experience gained in several different industries including the South African National Lottery, a top financial services group, Forex trading and training and his auditing and accounting profession days. Prior to joining Wisper, Mark was the CFO of the South African Qualifications Authority for over 11 years where he was responsible for managing and overseeing the budget, finances, procurement, statutory compliance and financial direction of the organization with its over 200 employees. Mark prides himself on his attention to detail and strong leadership and relationship skills which he employs to ensure that the business maintains a sound financial position.

### **Kylee Brown- HR Manager**

Kylee Brown is a Human Resources professional who has been with Wisper ISP for 7 years in a dual role as an Administrative Assistant to the CEO and the HR Manager. Kylee believes that the key to any organization's success lie within the development and engagement of the employees and has had a key role in growing the company from 30 employees to 77 employees over the last 7 years. Prior to Wisper, Kylee worked as a Human Resource Generalist/Executive Assistant

for a Defense contractor. During her time there, she was able to develop her interviewing and training skills due to the large amount of turnover that naturally occurs in the contracting world. Kylee is a SHRM Member, previously attended Western Governors University and is actively working to achieve her PHR certification. She is also very involved in WISPA and helps organize the bi-annual industry conference.

#### **David Gress- Facilities Manager**

David Gress is the Facilities Manager for Wisper ISP. He has been with the company in a few key roles since 2006. Previously, he served as the Field Services Manager, Tower Manager and COO. Serving in these vital roles has helped provide David with a unique perspective and a very well-rounded background that helps him in his current role. David got his start in the internet industry by working for a dial-up/wireless company. His background is in programming. Altogether, David brings 16 years of ISP experience. David graduated from the University of Missouri-Columbia with a Bachelor's degree in Computer Science and minors in Mathematics and Economics.

#### **Malinda Heuring- Marketing Manager**

After spending 15 years working on program development, patient advocacy and fundraising in the nonprofit world, Heuring took the leap to the for-profit world as the Marketing Manager for Wisper ISP. Her grassroots knowledge and desire to help all customers fulfill an unmet need has helped Wisper grow even as budgets decreased. Malinda has spoken on multiple marketing and social media panels at various wireless industry conferences and is a regular guest speaker at two local Universities. Malinda holds a BA in communications and public relations with a minor in Journalism from McKendree College (now McKendree University) and attended graduate school in the Department of Mass Communications at the University of Illinois.

#### **Dustin Alligood- Technical Support Manager**

Dustin Alligood began working at Wisper in July of 2014. He was hired on as a Tier 1 Technical Support Representative. In 2016 he became a Tier 2 Technical Support Representative and in

May of this year, he was promoted to the Technical Support Manager. Before Wisper, his previous work experience was in the customer service field. His main passion in life is to help others, and cybersecurity. He has a strong background in PC repair and network design. Dustin graduated with his Bachelor's Degree from the University of Phoenix in 2011 majoring in Computer Science, with a Minor in Security.

#### **Leah Edler- Reporting Manager**

Leah Edler came to Wisper in 2013 after spending 5 years in the Medical Recording and Billing field. She quickly worked her way up from a Billing Specialist to a Billing Manager, where she spent 5 years assisting our customers with all of their Internet account needs. Recently, Leah has been promoted to the Finance department where she will serve as a Reporting Manager. Leah brings a very detailed approach to her work and love to analyze data to better improve the processes at Wisper. She is experienced in Customer Service, all aspects of the Billing process, Quickbooks and has a knack for creating policies and procedures that help grow the departments she is in. Leah previously attended Kaskaskia College in Centralia, IL.

#### **Dario Mackins- Sales Manager**

Dario Mackins is the current Sales Manager at Wisper ISP and has been with the company for 11 years. Previously, he was the Technical Support Manager and has held various other supporting positions as well. Dario has played a significant role in Wisper's success by helping to negotiate tower contracts, assisting in executing acquisition plans and developing Wisper's employees. During his tenure, Dario has helped grow the Wisper network from 1,500 subscribers to over 12,000. He holds an Associates in Applied Science for Information Technology from Southwestern Illinois College.

#### **Dave Crabtree- Director of Business Development**

Dave Crabtree is the Director of Business Development for Wisper ISP. Dave is a new addition to the team, having served the previous 18 years in the telecommunications industry, holding several roles including Business Account Executive, VP of Operations and Regional Manager. He has extensive experience with building and maintaining teams, contract negotiation, bidding, and developing



strong, productive sales members. Dave has already spearheaded a MDU buildout campaign in our Central Missouri Network. Dave is also a previous business owner himself and brings that perspective to his work.

#### **Josh Edler- Network Administrator**

Josh Edler is the Network Administrator at Wisper ISP. Josh began his journey in the wireless industry in 2004 and has served in various roles such as Technical Support Manager and Networking Engineer III. Josh has a diverse skillset including network planning and design, troubleshooting, and configuration which helps him to effectively manage a large team across multiple locations. He has worked diligently to cultivate and maintain relationships with many of Wisper's manufacturers and vendors. Josh has also operated his own business building and repairing computers and doing network design and implementation for the last 14 years. He is currently studying for his Cisco Certified Network Associate (CCNA) at the University of Phoenix.

#### **Richard Gorman- Operations Manager**

Richard Gorman is the Operations Manager of Wisper ISP's Southwest Missouri location. Richard previously spent 5 years as the Director of Operations for a WISP that Wisper purchased. Prior to his time in the WISP industry, Richard spent 30 years in Customers Service and Management, consistently achieving recognition for increased sales and an exemplary safety record. Richard brings his customer service background to his current role, continually going above and beyond to ensure our customers receive the best service we can provide. He also has a background in law enforcement which brings a unique perspective to his current role. Richard studied Criminal Justice Administration at Missouri Southern State University.

Exhibit D

Financials  
(filed confidentially)

Exhibit E

Foreign Authority to do Business in Kansas

**KRIS W. KOBACH**  
Secretary of State



Memorial Hall, 1st Floor  
120 S.W. 10th Avenue  
Topeka, KS 66612-1594  
(785) 296-4564

## STATE OF KANSAS

November 09, 2018

ANN FOSTER  
SEARCH NETWORK

RE: WISPER ISP, INC.

ID. # 5242292 (USE IN ALL CORRESPONDENCE WITH OUR OFFICE)

Enclosed is your certified application for authority to do business in Kansas as a for profit corporation. Your corporation's business entity identification number is at the top of this page. This business entity identification number should be used in all correspondence with our office.

Every corporation must file an annual report with the Secretary of State and pay a filing fee. The annual report and fee are due together on the 15th day of the fourth month following the tax closing month. (For example, if the tax closing month is December, the due date is April 15 of the following year). The annual report may be filed as early as January 1. An annual report is not required if the company has not been incorporated for six months prior to its first tax year end. If your company operates on a tax year end other than the calendar year, you must notify our office in writing prior to December 31.

The annual report may be filed electronically at [www.sos.ks.gov](http://www.sos.ks.gov) or you may obtain a paper form from the Web site.

PLEASE NOTE: For information regarding taxes, contact the Kansas Department of Revenue at (785) 368-8222 or [www.ksrevenue.org](http://www.ksrevenue.org).

sm

Please  
Do Not  
Staple

5242292

FA

KANSAS SECRETARY OF STATE  
Application for Registration of  
Foreign Covered Entity

Memorial Hall, 1st Floor  
120 S.W. 10th Avenue  
Topeka, KS 66612-1594

(785) 296-4564  
kssos@ks.gov  
www.sos.ks.gov

Return file-stamped document to (name and address):  
Capitol Services - Corporate Filings Team  
PO Box 1831  
Austin TX 78767

3995 01  
051 003  
\$115.00

FILED BY KS SOS  
11-09-2018  
02:22:10 PM  
FILE#: 5242292



05256034

All information on the application for registration must be complete and accompanied by the correct filing fee or the document will not be accepted for filing. A certificate of existence or good standing from the home state must accompany the application.

Choose type of covered  
entity:

☒ Corporation for profit  
(fee \$115) 51-03

☐ Series limited liability company  
(fee \$250) 51-33  
(Statement 10a applies)

☐ Corporation not for profit  
(fee \$115) 51-17

☐ Limited partnership  
(fee \$165) 51-06

☐ Limited liability company  
(fee \$165) 51-10

☐ Limited liability partnership  
(fee \$165) 51-18  
(Statement 10b applies)

1. Name of covered entity:  
(17-7931(a))

Must exactly match name on  
certificate.

Wisper ISP, Inc.

2. State or foreign country  
of origin:  
(17-7931(b))

Illinois

3. Date of formation in  
home state:  
(17-7931(c))

Month

Day

Year

09

18

2003

4. Include a statement (certificate of good standing/existence\*) issued within 90 days of the application by the proper officer of the jurisdiction where such foreign entity is organized (usually the Secretary of State or comparable agency) that the entity exists in good standing under the laws of the jurisdiction of its organization. (17-7931(d))

\* Click here to see each state/jurisdiction's certificate and issuing agency.

John  
W



5. Date the covered entity began doing business in Kansas if different than the filing date:  
(17-7931(h))

Month	Day	Year
-------	-----	------

See FA-I #5 for additional filings and fees that may be due.

6. Name of resident agent and address of registered office in Kansas:  
(17-7931(i))

Must be a Kansas street address. A P.O. Box is unacceptable.

Name Capitol Corporate Services, Inc.		
Street Address 700 SW Jackson St, Ste 100		
City Topeka	State KS	Zip 66603

7. Fiscal year end:

31 December
-------------

8. Full nature and character of business to be conducted in Kansas:  
(17-7931(e))

Provide telecommunication services including fixed wireless broadband services and voice over IP services in Kansas

9. The foreign covered entity hereby consents, without power of revocation, that actions may be commenced against it in the proper court of any county in the state of Kansas; and the foreign covered entity stipulates and agrees that such service shall be taken and held in all courts to be valid and binding as if due service had been made upon the authorized persons of the foreign covered entity. (17-7931(g))

10a. This statement applies to foreign series limited liability companies only, and applies only if the series limited liability company is chosen as type of covered entity.

The operating agreement for this LLC provides for the establishment of one or more series. When the company has filed a certificate of designation for each series, which is to have limited liability, the debts, liabilities, and obligations incurred, contracted for, or otherwise existing with respect to a particular series of the limited liability company are enforceable against the assets of such series only, and not against the assets of the limited liability company generally or any other series thereof, and none of the debts, liabilities, obligations, and expenses incurred, contracted for, or otherwise existing with respect to the limited liability company generally or any other series thereof shall be enforceable against the assets of such a series. (17-76,143(o))

10b. This statement applies to foreign limited liability partnerships only, and applies only if the foreign limited liability partnership is chosen as type of covered entity.

The above-named partnership elects to be a foreign limited liability partnership. (56a-1001(c)(3))

11. I declare under penalty of perjury pursuant to the laws of the state of Kansas that the foregoing is true and correct. (17-1709)

Signature of Authorized Person (17-7931)

*Nathan T Stooke*

Name of Signer (Printed or Typed)

Nathan Stooke

**State of Indiana  
Office of the Secretary of State**

**Foreign Registration Statement  
of**

**WISPER ISP, INC.**

I, CONNIE LAWSON, Secretary of State, hereby certify that an Registration Statement of the above Foreign For-Profit Corporation has been presented to me at my office, accompanied by the fees prescribed by law and that the documentation presented conforms to law as prescribed by the provisions of the Indiana Code.

NOW, THEREFORE, with this document I certify that said transaction will become effective Friday, November 09, 2018.



In Witness Whereof, I have caused to be affixed my signature and the seal of the State of Indiana, at the City of Indianapolis, November 14, 2018

*Connie Lawson*

CONNIE LAWSON  
SECRETARY OF STATE

201811091289083 / 8086205

To ensure the certificate's validity, go to <https://bsd.sos.in.gov/PublicBusinessSearch>